



FLORIDA
DEPARTMENT *of*
ECONOMIC
OPPORTUNITY

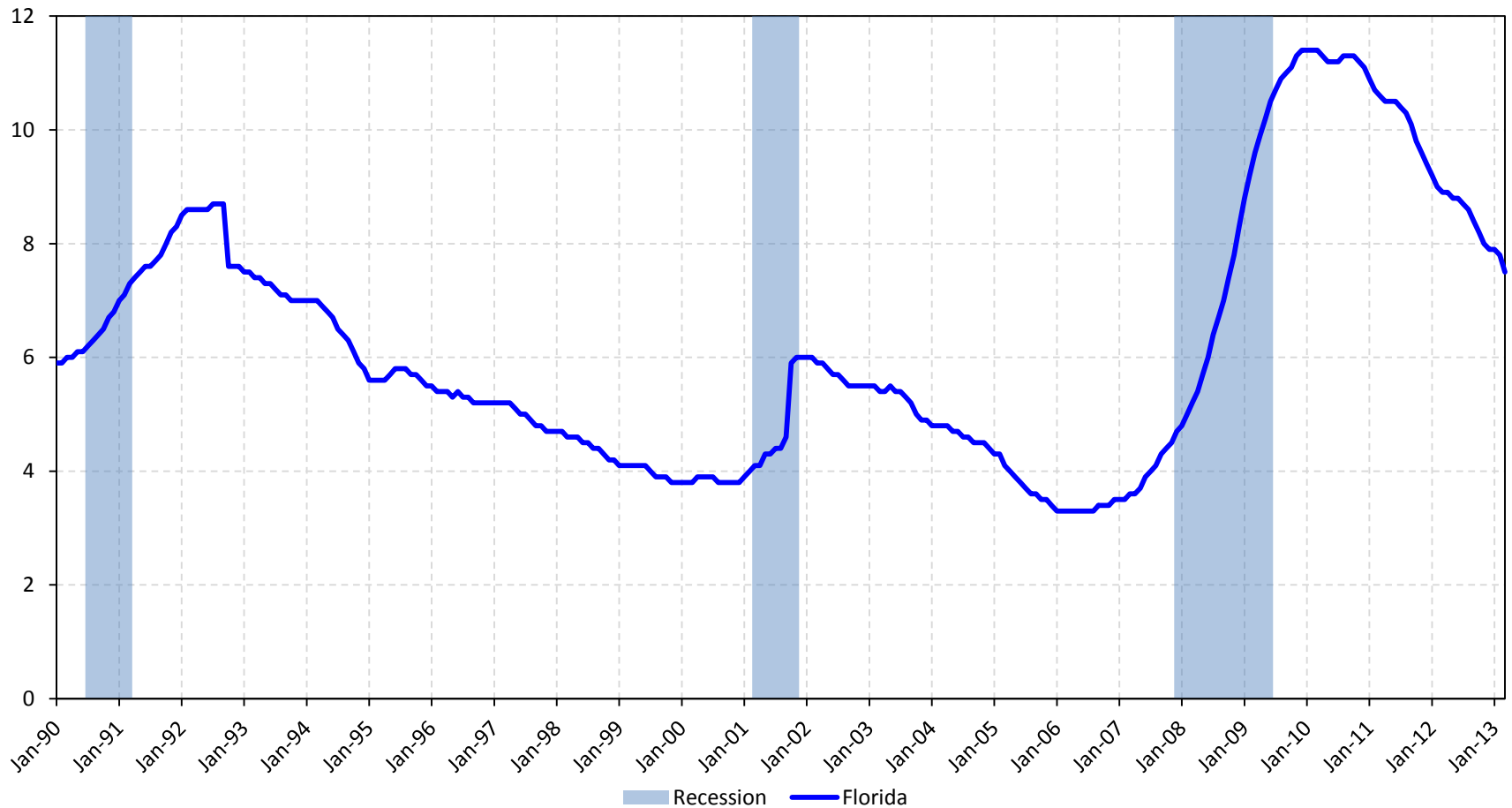
Florida Jobs Update

Jesse Panuccio, DEO Executive Director
Florida Cabinet
May 8, 2013



Florida Unemployment Rate

January 1990 – March 2013, Seasonally Adjusted



Source: U.S. Department of Labor, Bureau of Labor Statistics, Local Area Unemployment Statistics Program in cooperation with the Florida Department of Economic Opportunity, Bureau of Labor Market Statistics, released April 19, 2013.

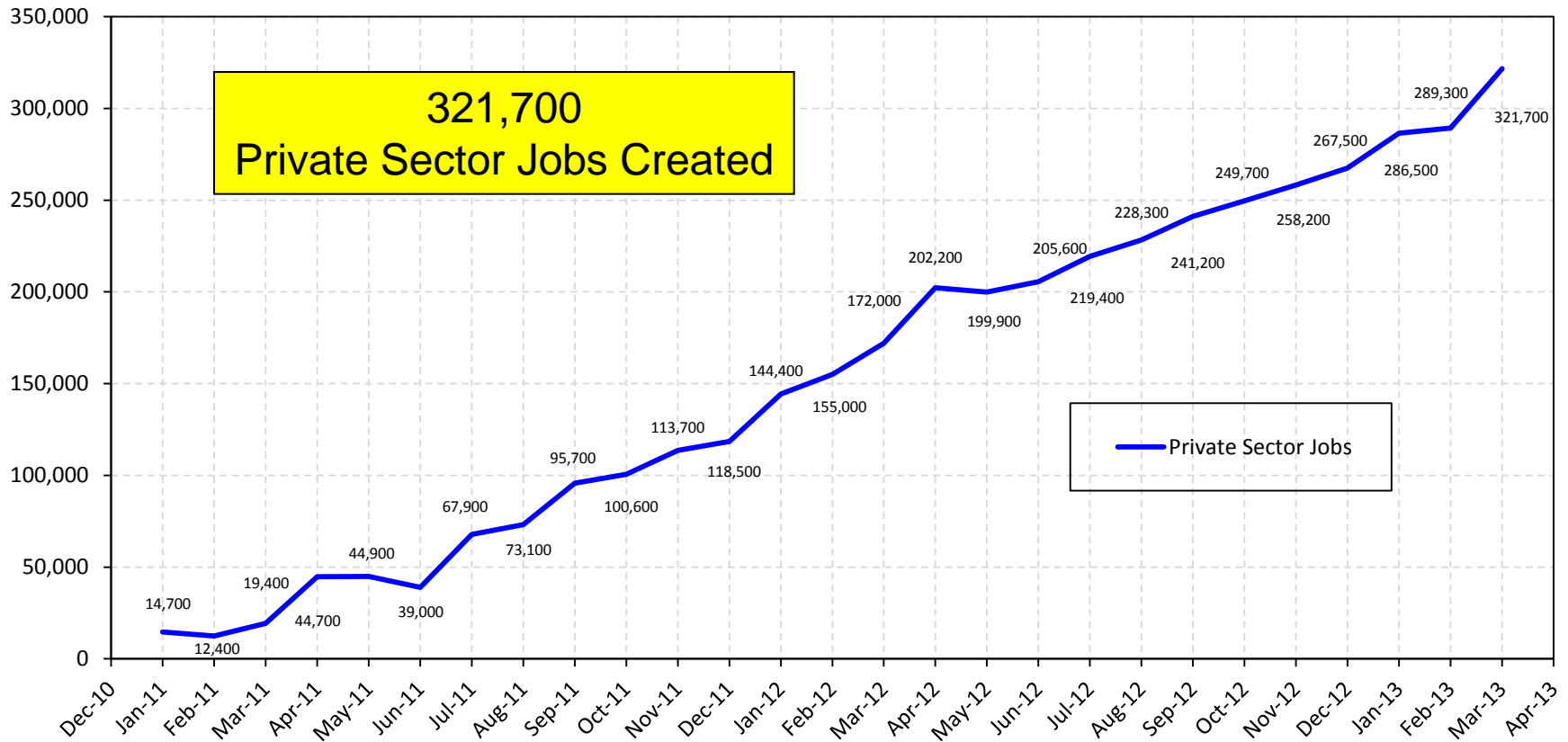


FLORIDA DEPARTMENT of ECONOMIC OPPORTUNITY

Private-Sector Jobs Created

December 2010 – March 2013, Seasonally Adjusted

Private Sector Jobs



Source: U.S. Department of Labor, Bureau of Labor Statistics, Current Employment Statistics Program, released April 19, 2013.

Prepared by: Florida Department of Economic Opportunity, Bureau of Labor Market Statistics.



FLORIDA DEPARTMENT of ECONOMIC OPPORTUNITY

Labor Force Conditions in the Orlando Metro Area

March 2013, Not Seasonally Adjusted

- The unemployment rate in the Orlando metro area is below the state and nation
- The current Orlando metro area unemployment rate of 6.6 percent is down from the high rate reported in January 2010 (11.9 percent)

Area	Labor Force	Employment	Unemployment	Unemployment Rate	Year Ago Unemployment Rate
Orlando-Kissimmee-Sanford MSA	1,139,762	1,064,262	75,500	6.6	8.7
Lake County	128,777	119,717	9,060	7.0	9.3
Orange County	632,153	590,562	41,591	6.6	8.6
Osceola County	139,186	129,259	9,927	7.1	9.4
Seminole County	239,647	224,725	14,922	6.2	8.0
Florida	9,353,000	8,698,000	655,000	7.0	8.7
United States	154,512,000	142,698,000	11,815,000	7.6	8.4

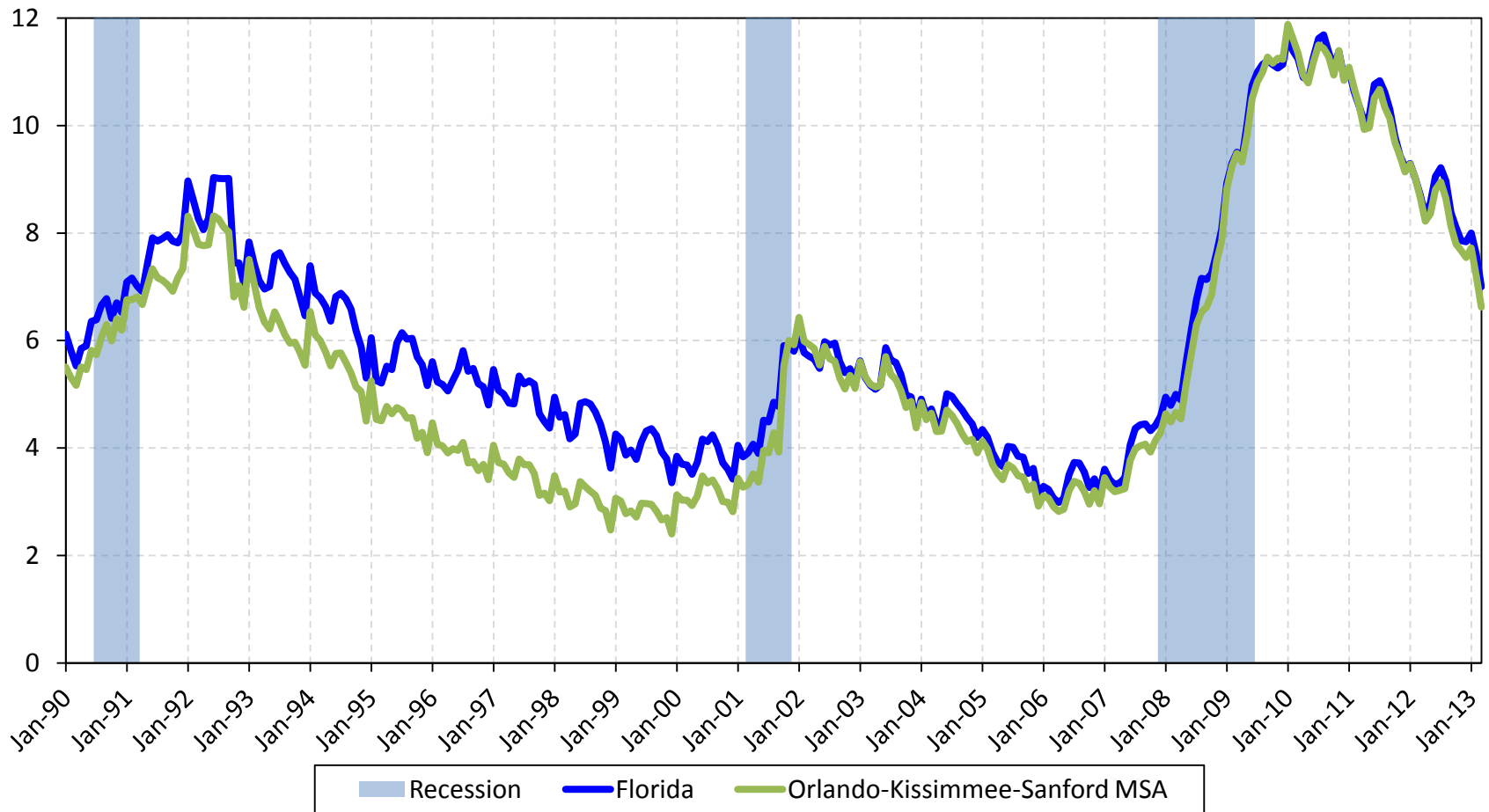
Source: U.S. Department of Labor, Bureau of Labor Statistics, Local Area Unemployment Statistics Program in cooperation with the Florida Department of Economic Opportunity, Bureau of Labor Market Statistics, released April 19, 2013.



FLORIDA DEPARTMENT of ECONOMIC OPPORTUNITY

Orlando Metro Area and Florida Unemployment Rates

January 1990 – March 2013, Not Seasonally Adjusted



Source: U.S. Department of Labor, Bureau of Labor Statistics, Local Area Unemployment Statistics Program in cooperation with the Florida Department of Economic Opportunity, Bureau of Labor Market Statistics, released April 19, 2013.



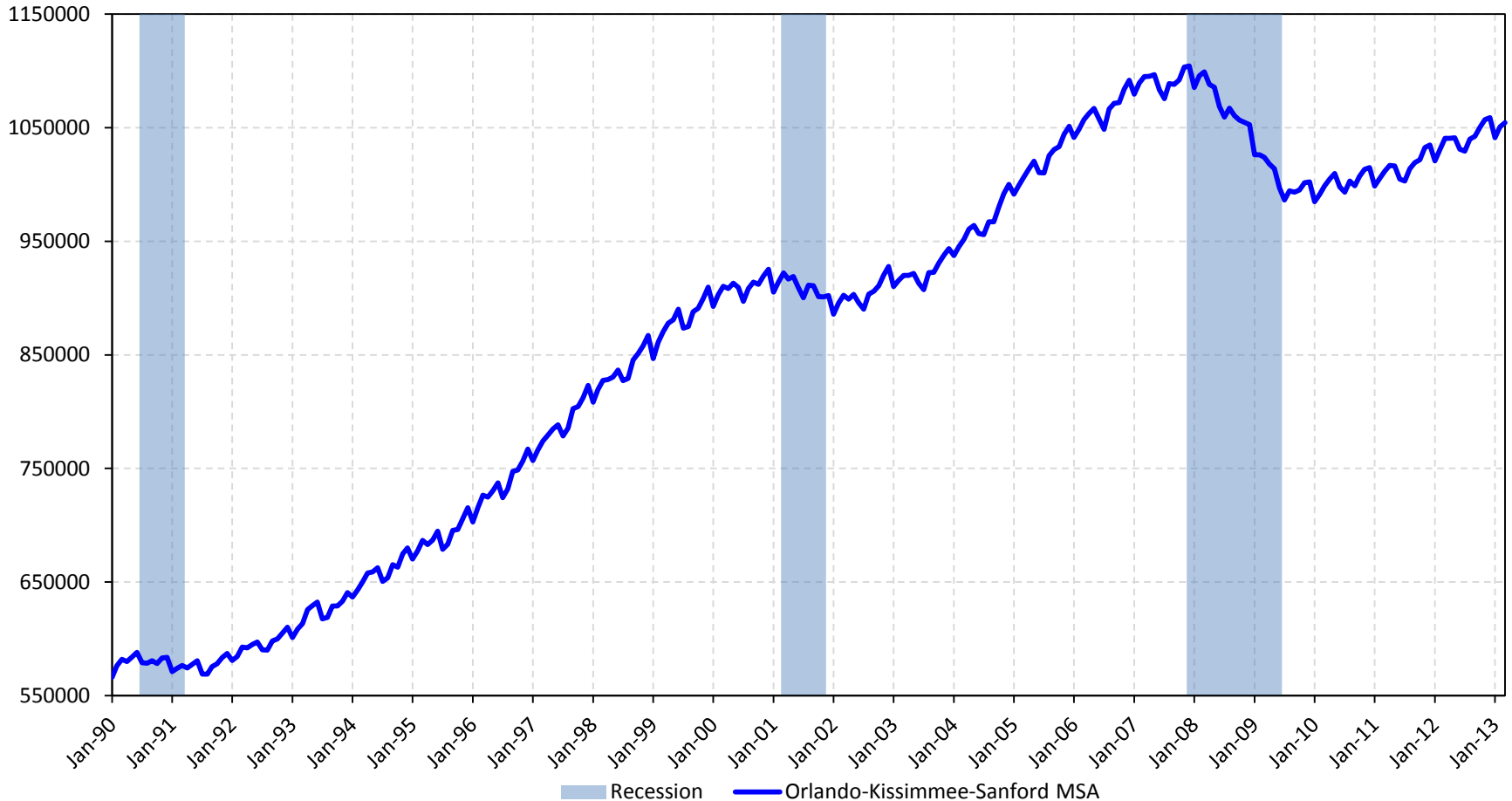
FLORIDA DEPARTMENT of ECONOMIC OPPORTUNITY

Orlando Metro Area Nonagricultural Employment Not Seasonally Adjusted

- 🌐 The Orlando metro area annual job growth rate has been positive for the past 34 months, after losing jobs for over two years
- 🌐 The Orlando metro area has had an increase of 13,700 jobs in the last year alone (March 2012 to March 2013)



Orlando-Kissimmee-Sanford MSA Nonagricultural Employment January 1990 – March 2013, Not Seasonally Adjusted



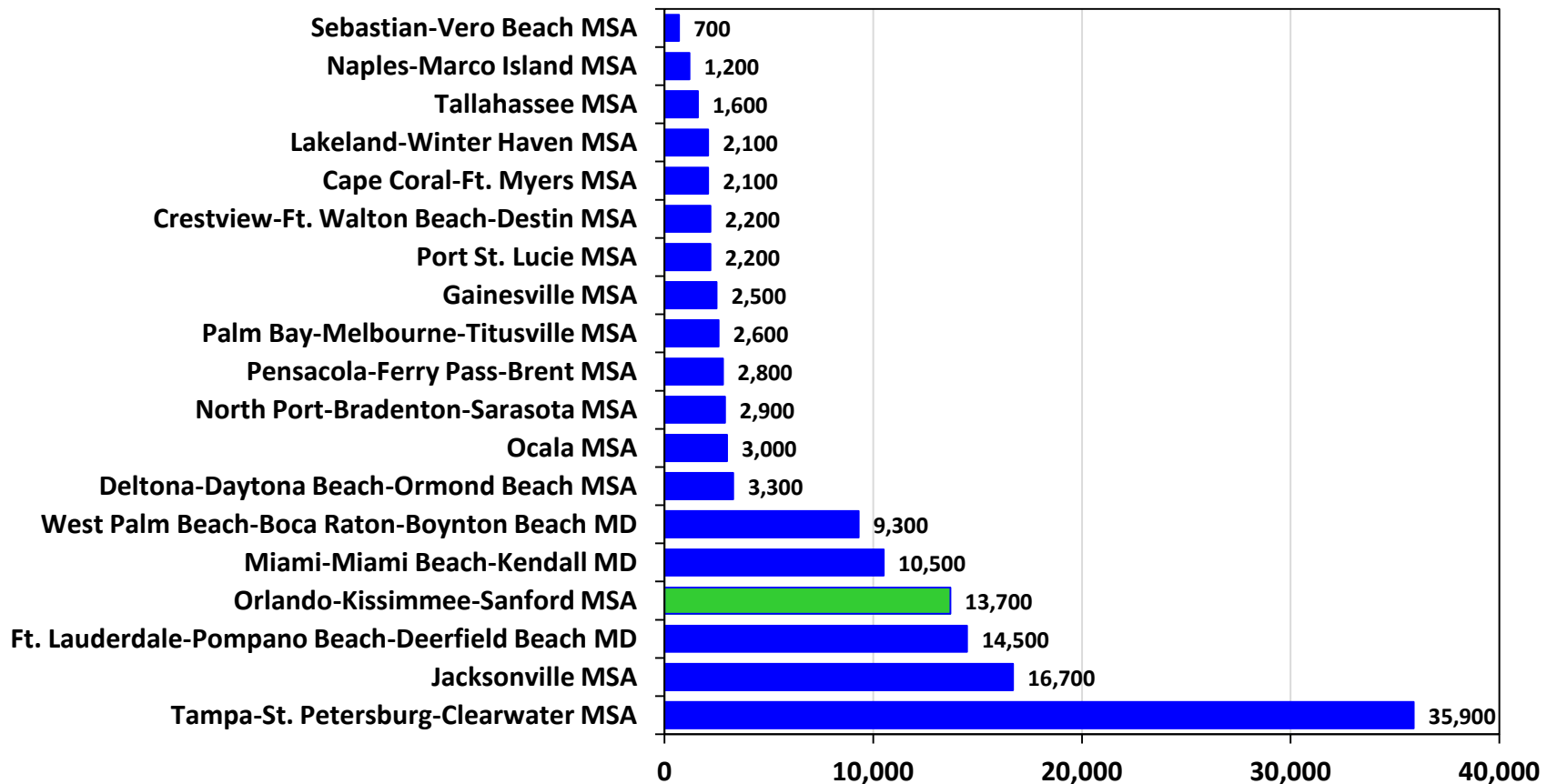
Source: U.S. Department of Labor, Bureau of Labor Statistics, Current Employment Statistics Program, released April 19, 2013.
Prepared by: Florida Department of Economic Opportunity, Bureau of Labor Market Statistics.



FLORIDA DEPARTMENT of ECONOMIC OPPORTUNITY

Florida Metro Areas Gaining Jobs Over the Year

March 2012 – March 2013, Not Seasonally Adjusted

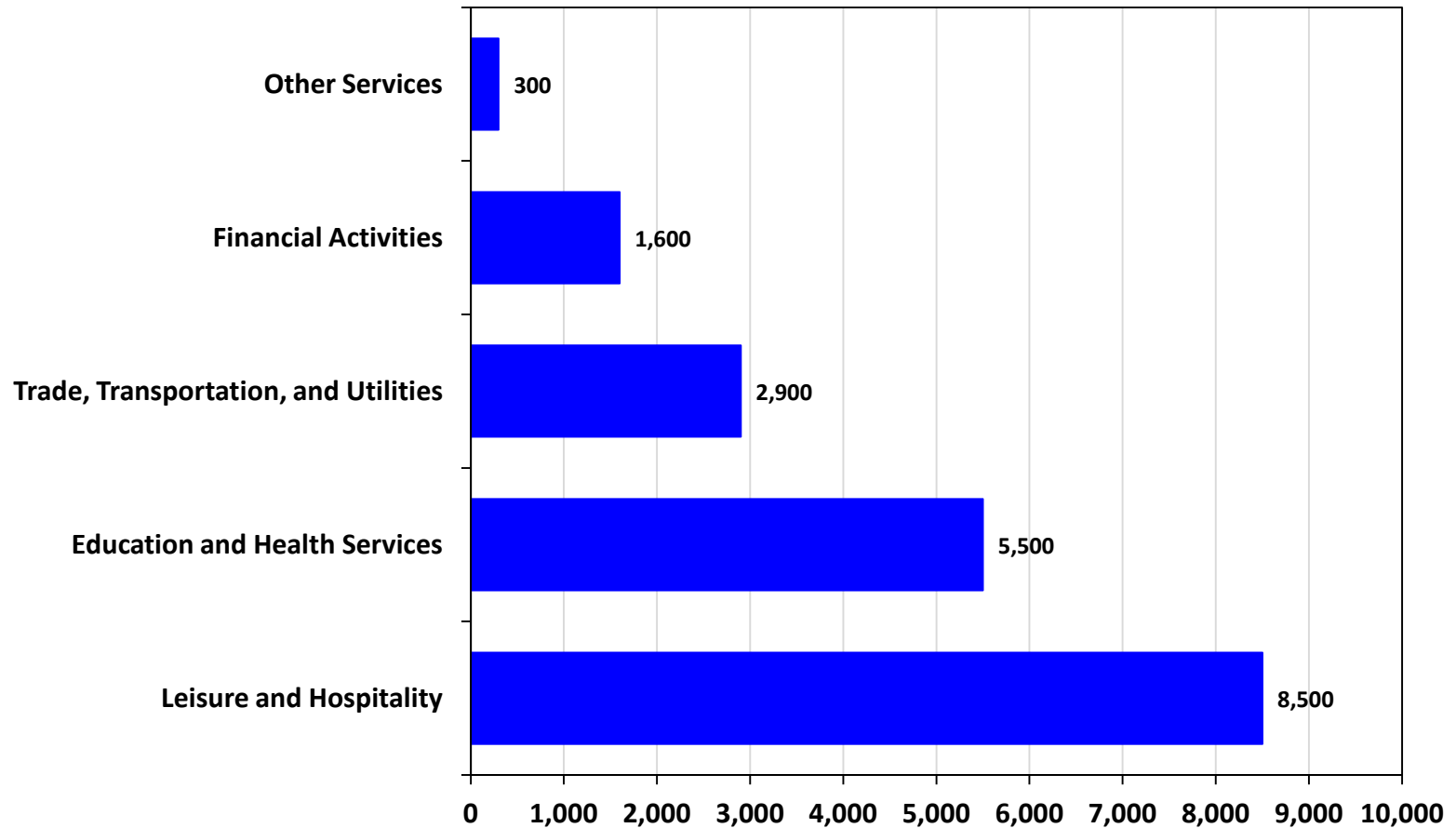


Source: U.S. Department of Labor, Bureau of Labor Statistics, Current Employment Statistics Program, released April 19, 2013.
Prepared by: Florida Department of Economic Opportunity, Bureau of Labor Market Statistics.



FLORIDA DEPARTMENT of ECONOMIC OPPORTUNITY

Orlando Metro Area Industries Expanding Over the Year March 2012 – March 2013, Not Seasonally Adjusted



Source: U.S. Department of Labor, Bureau of Labor Statistics, Current Employment Statistics Program, released April 19, 2013.
Prepared by: Florida Department of Economic Opportunity, Bureau of Labor Market Statistics.

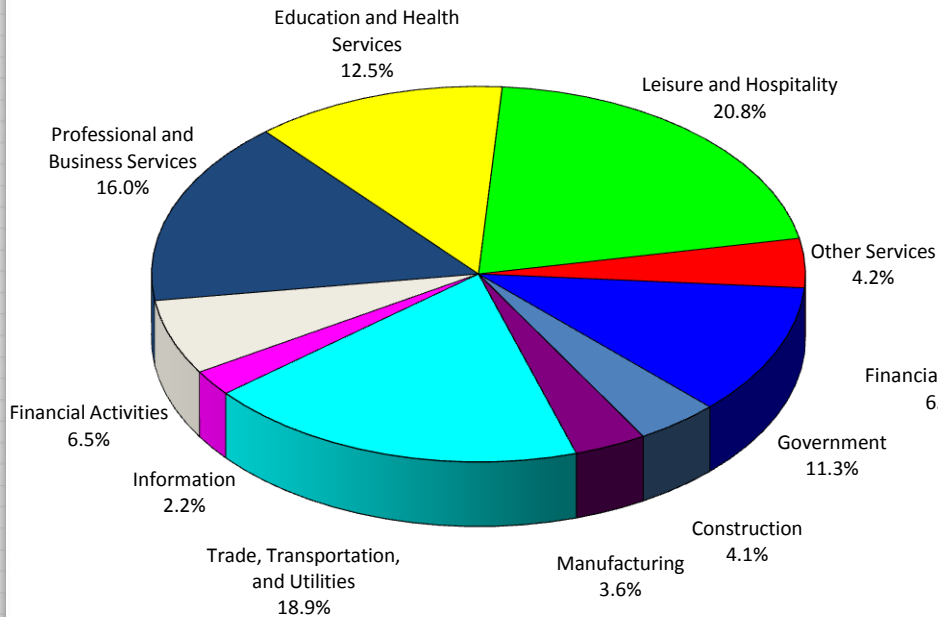


FLORIDA DEPARTMENT of ECONOMIC OPPORTUNITY

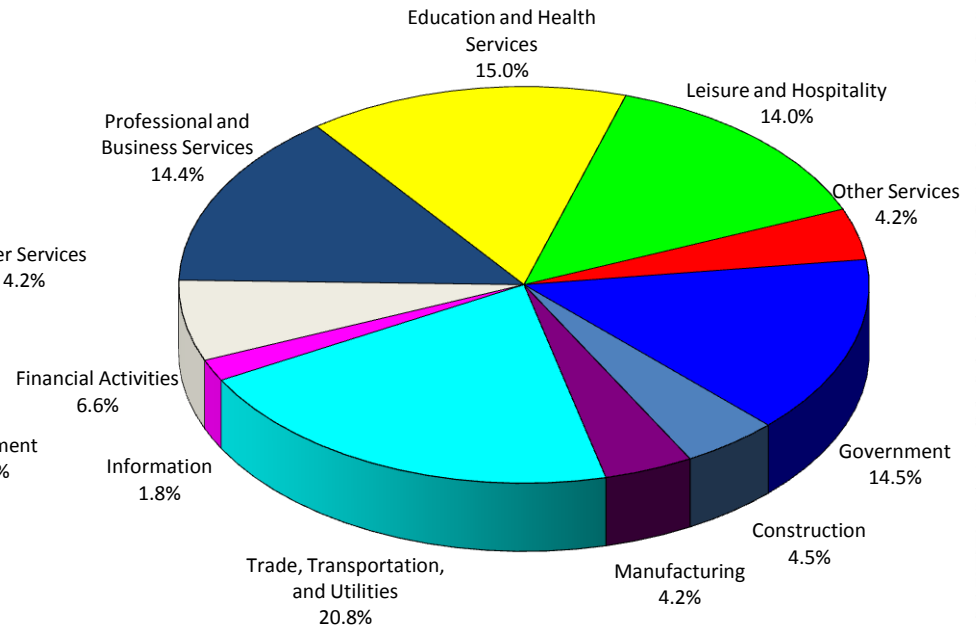
Nonagricultural Employment by Industry

March 2013 (Not Seasonally Adjusted)

Orlando-Kissimmee-Sanford MSA



Florida



Note: Mining and Logging too small to display

Source: U.S. Department of Labor, Bureau of Labor Statistics, Current Employment Statistics Program, released April 19, 2013.

Prepared by: Florida Department of Economic Opportunity, Bureau of Labor Market Statistics.



FLORIDA DEPARTMENT of ECONOMIC OPPORTUNITY

Help-Wanted OnLine for Region 12 (Orlando)

Occupations In Demand

Top Advertised Occupations, Workforce Central Florida - March 2013	Online Ads March 2013	Online Ads March 2012
Total Ads	33,364	34,460
Registered Nurses	1223	1126
First-Line Supervisors of Food Preparation and Serving Workers	927	757
Retail Salespersons	920	1006
Customer Service Representatives	819	829
First-Line Supervisors of Retail Sales Workers	790	746
First-Line Supervisors of Office and Administrative Support Workers	655	572
Sales Reps, Wholesale and Mfg, Except Technical and Scientific Products	602	614
Maids and Housekeeping Cleaners	535	521
Web Developers	461	634
Computer User Support Specialists	456	350
Telemarketers	435	857
Heavy and Tractor-Trailer Truck Drivers	411	430
Cooks, Restaurant	407	342
Software Developers, Applications	398	386
Maintenance and Repair Workers, General	382	374

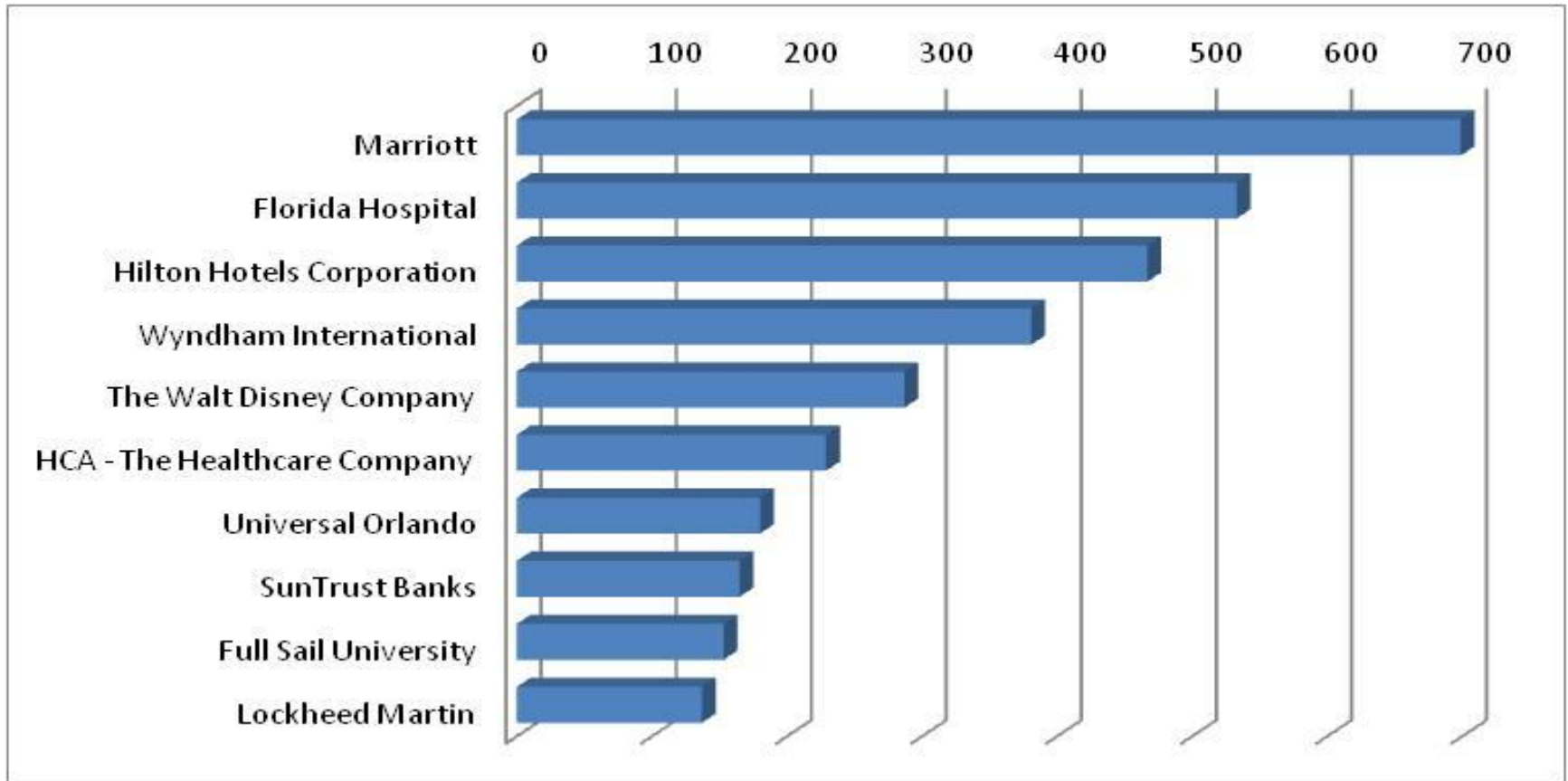
Source: The Conference Board, Help Wanted Online, prepared by the Florida Department of Economic Opportunity, Bureau of Labor Market Statistics.



Help-Wanted OnLine

Employers With the Most Online Ads for Region 12 (Orlando)

March 2013



Source: The Conference Board, Help Wanted Online, prepared by the Florida Department of Economic Opportunity, Bureau of Labor Market Statistics.



FLORIDA DEPARTMENT of ECONOMIC OPPORTUNITY

Success Story

Orlando Metro Area: An Industry Hub for Pharmaceuticals



- 🌐 213 new jobs
- 🌐 \$18.1 million in capital investment



FLORIDA DEPARTMENT *of* ECONOMIC OPPORTUNITY



DEO: Addressing employment needs of Florida service members and veterans

Florida and the United States Employment Status by Veteran Status Universe: Civilian non-institutionalized population 20 years and over 2012 CPS Annual Averages, Not Seasonally Adjusted		
	Veterans	Nonveterans
FLORIDA		
Total population, 20 years and over	1,555,000	13,001,000
In labor force	744,000	8,380,000
Employed	690,000	7,706,000
Unemployed	54,000	674,000
Unemployment rate	7.3%	8.0%
U.S.		
Total population, 20 years and over	21,167,000	205,133,000
In labor force	10,995,000	138,157,000
Employed	10,225,000	127,819,000
Unemployed	771,000	10,338,000
Unemployment rate	7.0%	7.5%



Paychecks for Patriots (P4P)



FLORIDA DEPARTMENT *of* ECONOMIC OPPORTUNITY

