

SUWANNEE RIVER WATER MANAGEMENT DISTRICT
INVITATION TO BID
NO. 18/19-044 WLR
PINE SEEDLING PRODUCTION

Table of Contents

Section	Title	Page
1	Introduction	2
2	Proposed Schedule	2
3	Instructions to Proposers	2
4	Key Points	3
5	Scope of Work	4
6	Proposal Response Forms	7

Suwannee River Water Management District
9225 CR 49
Live Oak, FL 32060
386.362.1001
386.362.1056 (Fax)
800.226.1066 (Florida only)
www.mysuwanneeriver.com

SECTION 1 - INTRODUCTION

The Suwannee River Water Management District (also referred to as SRWMD or District) owns and manages approximately 160,000 acres of forestland in north central Florida for protection of floodplains and their associated habitats. The District's Land Management Program directs land management staff to manage and, if necessary, restore lands titled to the Governing Board. Reforestation of pine lands with healthy, vigorous seedlings is conducive in accomplishing this goal.

The District is requesting bids to provide pine seedlings to reforest approximately 190 acres in the winter of 2020-2021. The District is interested in containerized longleaf pine and expects to plant approximately 139,000 containerized seedlings. The purpose of planting is to reforest or augment existing areas with pine tree seedlings to meet the District's Desired Future Conditions (DFC).

SECTION 2 - PROPOSED SCHEDULE

September 9, 2019	Release of Invitation to Bid (ITB)
September 23, 2019	Bids due prior to 10:00 am at District Headquarters in Live Oak. Opening will occur at this time.*

* Denotes a public meeting. All times denote Eastern Standard Time (EST).

SECTION 3 - INSTRUCTION TO BIDDERS

Delivery of Bids: Bidders are required to complete and submit one (1) original and one (1) copy of the Response Forms included in Sections 6. Response forms shall be sent in one (1) envelope to:

Pennie Flickinger, Business Resource Specialist III
Suwannee River Water Management District
9225 CR 49
Live Oak, FL 32060 Phone: 386.362.1001

Bids are due at the above address prior to 10:00 am on September 23, 2019. Bids received after this time, for any reason, will be rejected. The bids shall be hand-delivered or mailed. No common carrier guarantees next day delivery to District headquarters. The mission of any required information will deem the bid package as non-responsive.

Responses must be hard copy. E-mail or FAX transmittals will not be accepted.

All responses shall be submitted in sealed envelopes with the **invitation number (ITB 18/19-044 WLR) and opening time and date (10:00 am September 23, 2019) clearly marked in large, bold and/or colored lettering.** Responses delivered in an envelope not properly marked with the ITB number, opening date and time that are inadvertently opened by District personnel will not be considered.

Additional Information: Additional bid packages may be obtained by logging on to www.mysuwanneeriver.com;

SECTION 4 – KEY POINTS

Selection of Contractor: In accordance with subsection 287.057(1)(a)4, Florida Statutes, the contract shall be awarded to the responsible and responsive vendor who submits the lowest responsive bid. Responsiveness is determined in part by evaluating the vendor's past experience successfully producing quality containerized longleaf pine seedlings, and positive work references attesting to the quality of seedlings and work are also evaluated. Should the successful Bidder be unable at any time to accomplish the work he has been contracted for, the next ranked Bidder for the same task may be contacted to complete the required work.

Invoicing and Payment: Invoices for payment can be submitted after seedlings are procured. Payment will be made when all work has been verified and performed to the specifications listed in SECTION 5 Scope of Work and the satisfaction of the District. Payments will be made at the quoted bid rate(s).

Challenge of Solicitation Process: If a potential respondent protests any provisions of this ITB, a notice of intent to protest shall be filed with the District in writing within 72 hours after the posting of the invitation to bid on the District's website. **“Failure to file a protest within the time prescribed in Section 120.57(3), Florida Statutes shall constitute a waiver of proceedings under Chapter 120 of Florida Statutes.”**

Challenge of District's Intent to Award Contract: If a respondent intends to protest District's intent to award Contract, the notice of intent to protest must be filed in writing within 72 hours after posting of a notice of intent to award contract and the respondent shall file a formal written protest within ten (10) days after filing of notice of intent to protest. Any respondent who files a formal written protest pursuant to Chapter 28-110, Florida Administrative Code, and Section 120.57(3), Florida Statutes, shall post with the District at the time of filing the formal written protest, a bond pursuant to Section 287.042(2)(c), Florida Statutes (2019).

Failure to file a notice of intent to protest or failure to file a formal written protest within the time prescribed in Chapter 28-110, Florida Administrative Code, and Section 120.57(3), Florida Statutes, or failure to post the bond or other security required by law within the time allowed for filing a bond shall constitute a waiver of proceedings under Chapter 120, Florida Statutes. More specifically, **“Failure to file a protest within the time prescribed in Section 120.57(3), Florida Statutes shall constitute a waiver of proceedings under Chapter 120 of Florida Statutes.”**

Americans with Disabilities Act: The District does not discriminate upon the basis of any individual's disability status. This nondiscrimination policy involves every aspect of the District's functions including one's access to, participation, employment, or treatment in its programs or activities. Anyone requiring reasonable accommodation as provided for in the Americans with Disabilities Act should contact Gwen Lord, Senior Procurement Specialist, at 386.647.3164 or 800.226.1066 (Florida only).

Minority Business Enterprises: The District recognizes fair and open competition as a basic tenet of public procurement. Respondents doing business with the District are prohibited from discriminating on the basis of race, color, creed, national origin, handicap, age, or sex. The District encourages participation by minority business enterprises. Whenever two or more service providers are ranked equally, a minority business enterprise shall be given preference in the award process.

Veteran's Preference: In the absence of a minority business enterprise, whenever two or more service providers are ranked equally, a veteran-owned business enterprise shall be given preference in the award process.

Public Entity Crime: Section 287.133(2)(a), Florida Statutes, states "A person or affiliate who has been placed on the convicted vendor list following a conviction for a public entity crime may not submit a bid on a contract to provide any goods or services to a public entity, may not submit a bid on a contract with a public entity for the construction or repair of a public building or public work, may not submit bids on leases of real property to a public entity, may not be awarded or perform work as a contractor, supplier, subcontractor, or consultant under a contract with any public entity, and may not transact business with any public entity in excess of the threshold amount provided in s.287.017 for CATEGORY TWO for a period of 36 months from the date of being placed on the convicted vendor list."

Scrutinized Company: Section 287.135, Florida Statutes, states "A company is ineligible to, and may not, bid on, submit a proposal for, or enter into or renew a contract with an agency or local governmental entity for goods or services of:

a. Any amount if, at the time of bidding on, submitting a proposal for, or entering into or renewing such contract, the company is on the Scrutinized Companies that Boycott Israel List, created pursuant to s. 215.4725, or is engaged in a boycott of Israel; or

b. One million dollars or more if, at the time of bidding on, submitting a proposal for, or entering into or renewing such contract, the company:

1. Is on the Scrutinized Companies with Activities in Sudan List or the Scrutinized Companies with Activities in the Iran Petroleum Energy Sector List, created pursuant to s. 215.473; or

2. Is engaged in business operations in Cuba or Syria."

Drug Free Workplace Act: The selected Bidder shall certify that it has established a drug-free workplace.

Insurance Requirements: If awarded, Bidder shall represent and guarantee that all employees, agents, servants or representatives of the respondent, and all employees, agents, servants, or representatives of subcontractors are covered by workers' compensation insurance. Prior to entering into a contract with the District, respondent agrees to furnish the District certificate of insurance.

- Workers' compensation insurance as required above

The certificate of insurance shall also provide that District shall be notified in writing by the carrier at least 30 days prior to any cancellation of said insurance.

Rejection of Responses: The District reserves the right to reject any and all bids or other proposals submitted in response to District invitation. District also reserves the right to waive any minor deviations in an otherwise valid proposal.

SECTION 5 - SCOPE OF WORK

All work must be coordinated with the District Project Manager or their appointed agent(s). Lifting and packaging the seedlings for storage and transportation will commence within 10 days' notice from the District Project Manager that conditions are acceptable. Barring

unanticipated delays planting will commence by November 25th, 2020 and be completed no later than February 7th, 2021. Seedlings must be available during those dates

Seedling quality must comply with the quality standards listed below. The District may request to inspect the seedlings slated for District lands at any time. Invoices for payment may be submitted after the seedlings are procured

2020-2021 Project Areas

The total acreage for projects is approximately 190 acres. Project-specific maps are available as shown below:

- **Alapahoochee Tract;** Containerized longleaf pine @ 726 TPA (6x10) over 55 acres (approx. 39,930 seedlings). An online location map can be found at: <http://mysuwanneeriver.com/DocumentCenter/View/10768>
- **Osteen Tract:** Containerized longleaf pine @ 726 TPA (6x10) over 10 acres (approx. 7,260 seedlings). An online location map can be found at: <http://mysuwanneeriver.com/DocumentCenter/View/10770>
- **Troy Springs Tract:** Containerized longleaf pine @ 726 TPA (6x10) over 76 acres (approx. 55,176 seedlings). An online location map can be found at:
- **Santa Fe River Ranch Tract:** Containerized longleaf pine @ 726 TPA (6x10) over 34 acres (approx. 24,684 seedlings). An online location map can be found at: <http://mysuwanneeriver.com/DocumentCenter/View/10732>
- **Woods Ferry Tract:** Containerized longleaf pine @ 726 TPA (6x10) over 15 acres (approx. 10,890 seedlings). An online location map can be found at: <http://www.mysuwanneeriver.com/DocumentCenter/View/10757/Woods-Ferry-Jerry-Branch?bidid=>

Please contact the District Project Manager Ryan Sims at 386.249-0645 if you have any questions.

Seedling Production Standards:

- The nursery shall furnish all labor, supervision, materials, supplies, and equipment necessary to grow, harvest, and package seedlings at its sole expense.
- The nursery providing the seedlings shall stratify District seed for 5-30 days and shall treat seeds with Bayleton (or equivalent fungicide) per label recommendations and requirements.
- The parent source of the seeds will be from USDA Hardiness Zone 8; the nursery will provide the site and dates when the seeds were collected. Any specific genetic lines must also be listed.
- The nursery shall maintain SRWMD beds free and clear of weeds.
- The nursery shall sow the seeds on a schedule and grow seedlings at a target density appropriate for the species to achieve the following quality standards:

Minimum Quality Standards for District Pine Seedlings			
Quality Measures	Slash Pine (bare root)	Longleaf Pine (bare root)*	Longleaf Pine (containerized)
Root Collar Diameter	1/8"	3/8"	1/4"
Root System Length	> 6 and < 12"	> 6 and < 12"	≥ 5" plug
Lateral Roots	Abundant	6 – 8"	Abundant (in plug)
Winter Buds	Present	Present	Present
Mycorrhizae**	Present	Present	Present

*Bare root longleaf will be sown during September through November (fall sown) the year preceding lifting and field planting;

**Mycorrhizae inoculants shall be added to the seedlings by the nursery unless otherwise requested by the District Project Manager.

- **Upon lifting the seedlings from the beds, the nursery shall provide the following care:**
 - Seedlings will be packaged for storage and transportation in containers with sufficient root moisture media (i.e., gel, peat, etc.) to ensure the root system remains moist prior to planting.
 - Bare root seedlings may be bundled with the root system covered or packaged in plastic-lined and wax-coated boxes; **containerized seedlings must be packaged in plastic-lined and wax-coated boxes.**
 - Seedlings will be kept in a cold storage facility (34° - 44° F) prior to planting.
- Seedling root systems must not be exposed to direct open-air contact for more than 60 seconds prior to planting; this includes lifting, and storage by the nursery.
- Seedling containers shall not be stacked greater than two high (based on storage method, i.e., boxes, bundles, etc.) or compressed in such a manner as to create the potential for heat buildup. Care must be taken to avoid excessive rough handling of the seedling containers.
- Seedlings should be examined carefully for the following characteristics: size inferiority, mechanical damage, broken or skinned stem, fermented smell, heat decomposition, moldy needles, or slippery bark. **No seedlings should arrive at the planting site that exhibits any of these characteristics.**
- No root pruning will be tolerated; root systems must meet the above listed Minimum Quality Standards.
- Contractor must be able to provide whole order deliveries or partial order deliveries. Delivery orders will be made by the District Project Manager or a District Representative.
- **The seedlings must meet the aforementioned quality standards and be ready to plant upon leaving the nursery. A representative from the District will inspect the seedlings prior to procurement.**

Section 6
ITB 18/19-044 WLR
Pine Seedling Production
(Page 1 of 3)

Bidders are required to complete and submit this form. One (1) original and one (1) copy shall be delivered in one (1) envelope as discussed in Section 3.

Company Name _____

FEID # _____

Address _____

Company Phone Number _____

Company Fax Number _____

Primary Contact Person _____

Primary Contact Phone _____

Primary Contact Cellular _____

Email Address _____

The company must provide three examples of the production/delivery of 139,000 containerized Longleaf Pine seedlings; these work examples must have occurred within the past three years. Failure to provide three examples and the contact information of the site manager will nullify consideration to provide the service to the District.

Section 6
ITB 18/19-044 WLR
Pine Seedling Production
(Page 2 of 3)

Previous Work History; *only include work completed in the last three years producing containerized longleaf pine seedlings.*

Species	Purchaser and Date of Services	Project/Site Manager	Contact Information
Containerized Longleaf	1. 2. 3. 4.	1. 2. 3. 4.	1. 2. 3. 4.

Please provide three references below that can attest to seedling quality and the quality of work your company is able to provide.

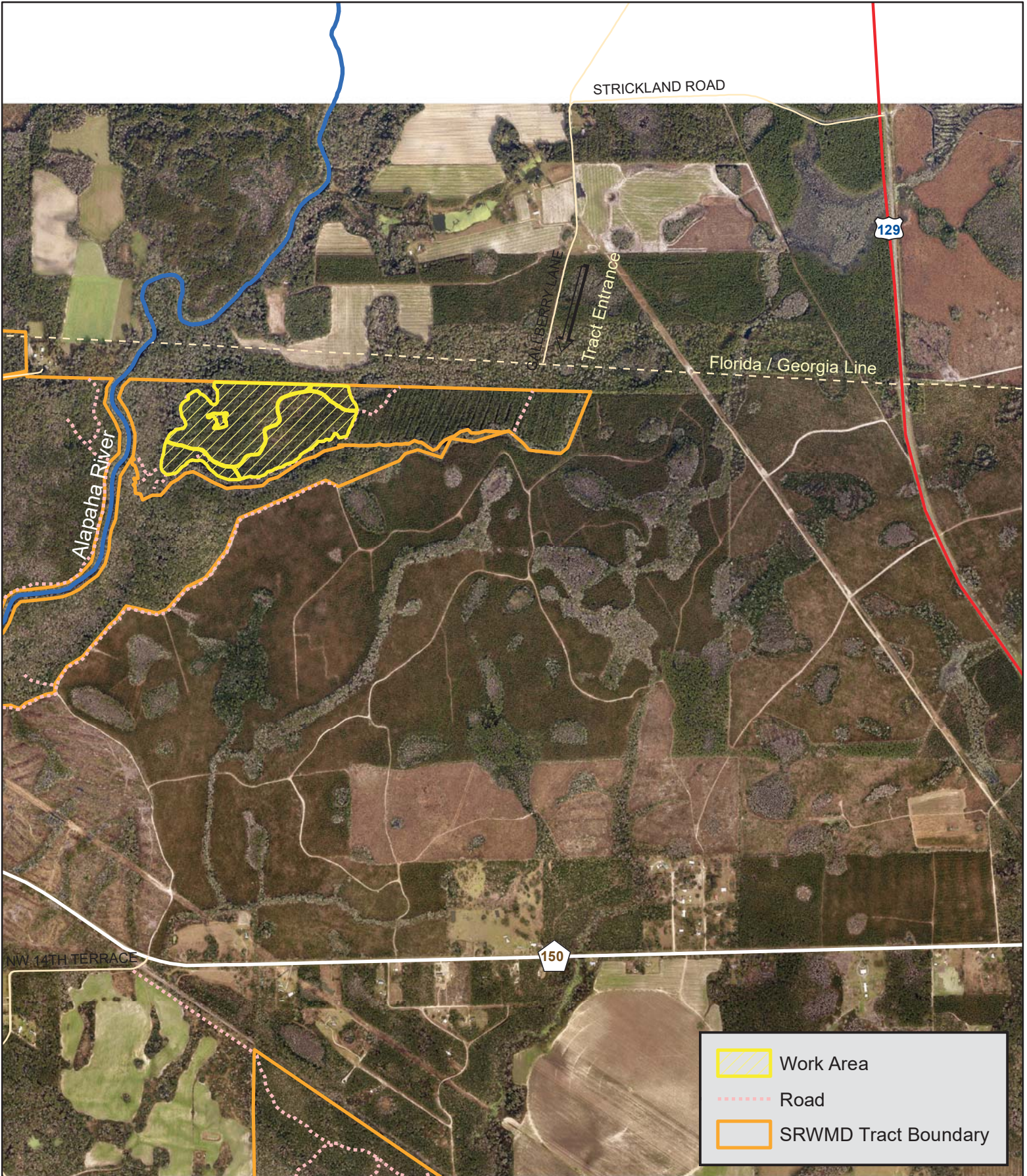
References:	Name	Telephone and/or email
1.	_____	_____
2.	_____	_____
3.	_____	_____


Section 6
ITB 18/19-044 WLR
Pine Seedling Production
(Page 3 of 3)

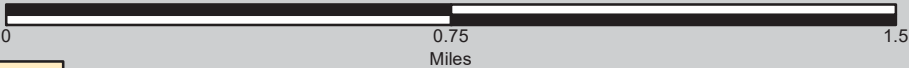
1) SEEDLINGS

Please fill in the categories for tree seedling production/delivery services.


Seedling Type/Quantity	Cost per 1,000 seedlings	Seed source and genetic line
Containerized Longleaf Pine / 139,000	\$	Improved – 1 st Generation
Containerized Longleaf Pine / 139,000	\$	Forest Source






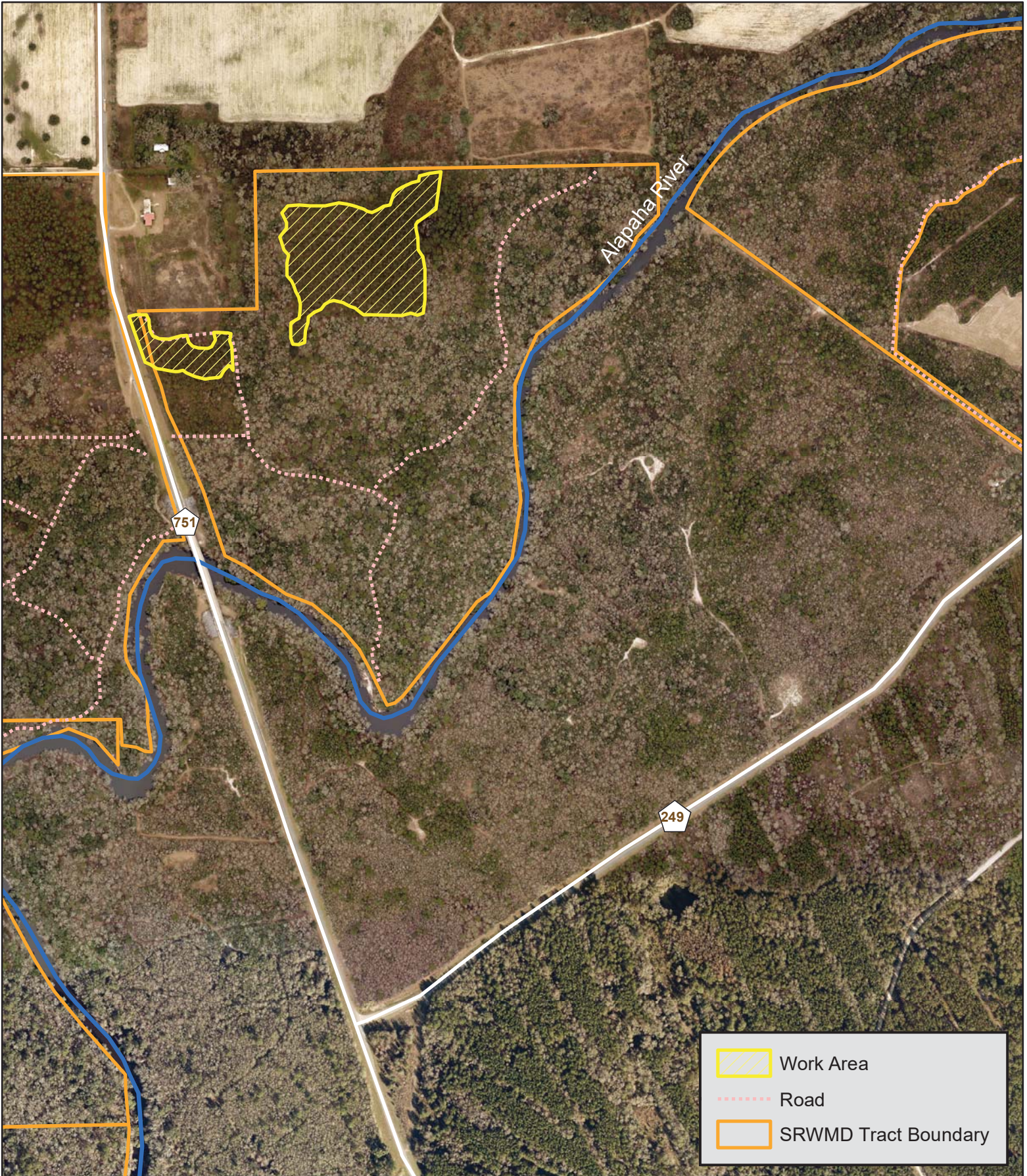


0 0.75 1.5
Miles



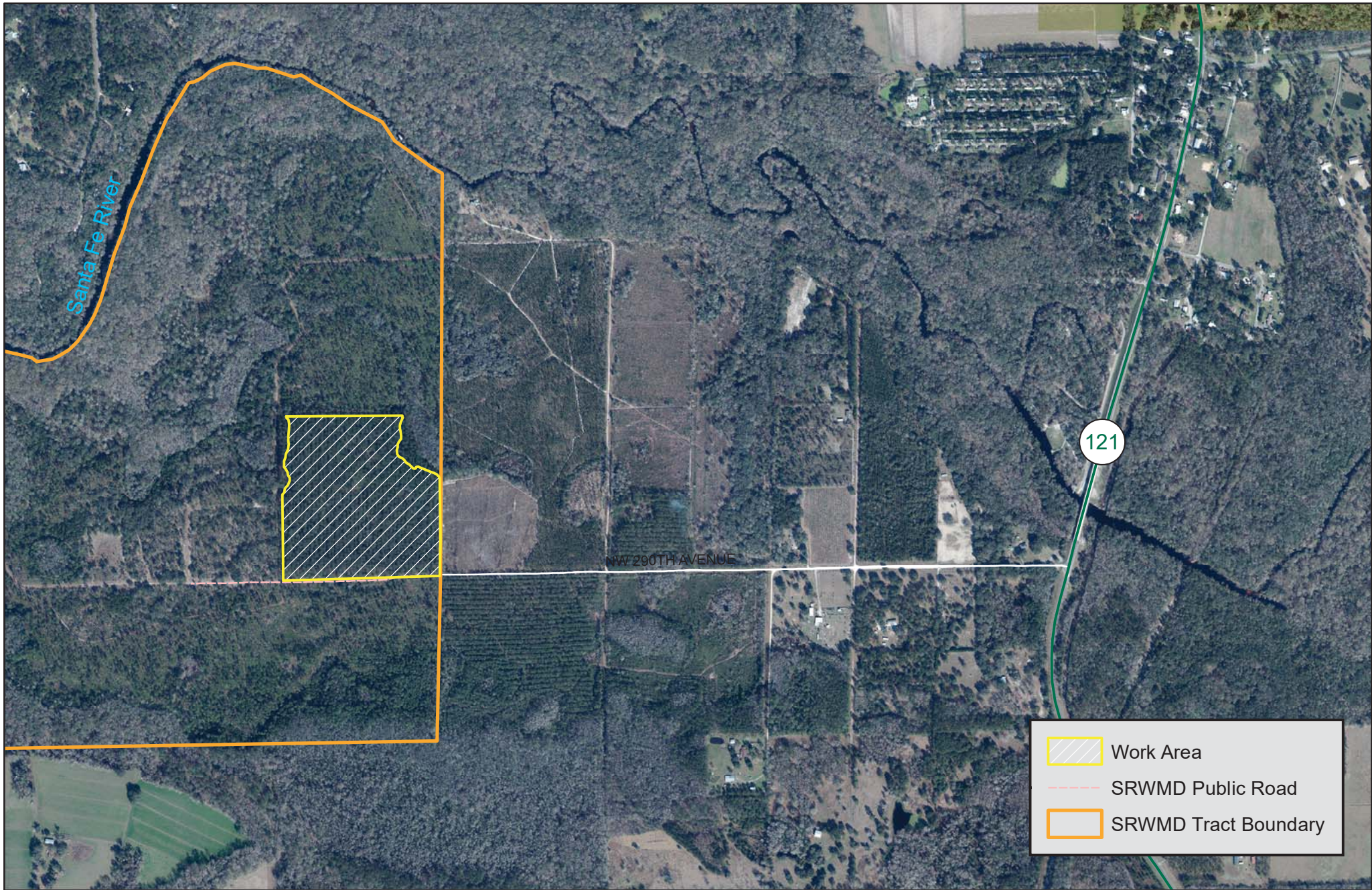
2020-2021 Site Preparation Areas
Mechanical / Chemical / Burning / Reforestation
Alapahoochee Tract (55 ac) - Hamilton County
Longleaf Pine (*Pinus palustris*)






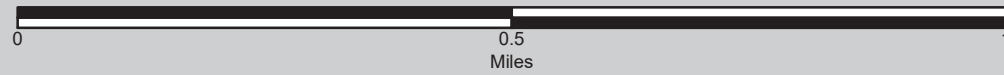


2020-2021 Site Preparation Areas
Mechanical / Chemical / Burning / Reforestation
Osteen Tract (10 ac) - Hamilton County
Longleaf Pine (*Pinus palustris*)



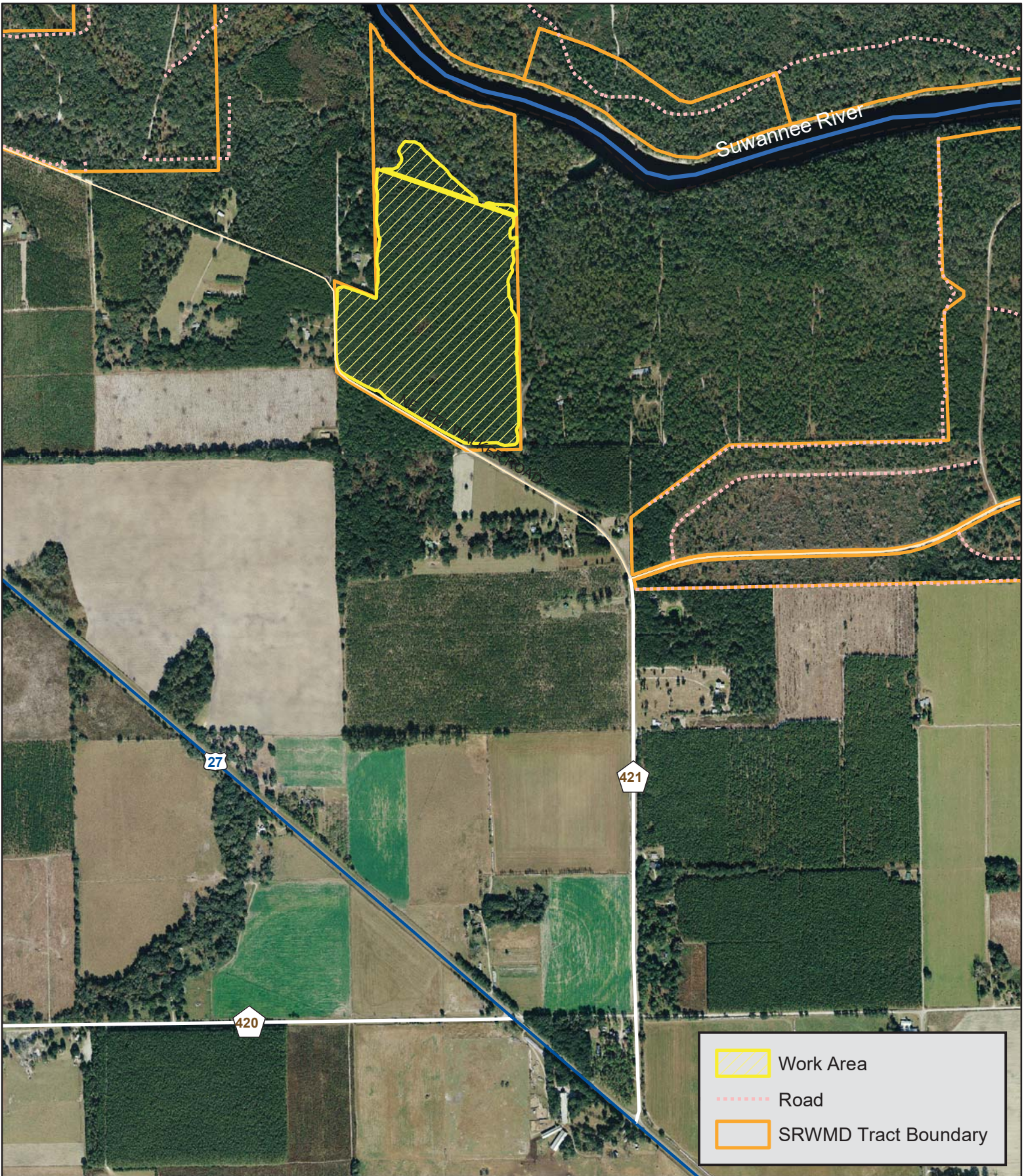



	Work Area
	SRWMD Public Road
	SRWMD Tract Boundary

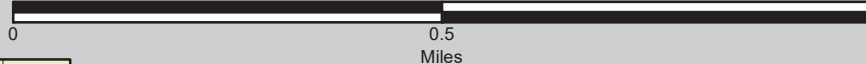


2020-2021 Site Preparation Areas
Mechanical / Chemical / Burning / Reforestation
Santa Fe River Ranch Tract (34 acres) - Alachua County
Longleaf Pine (*Pinus Palustris*)









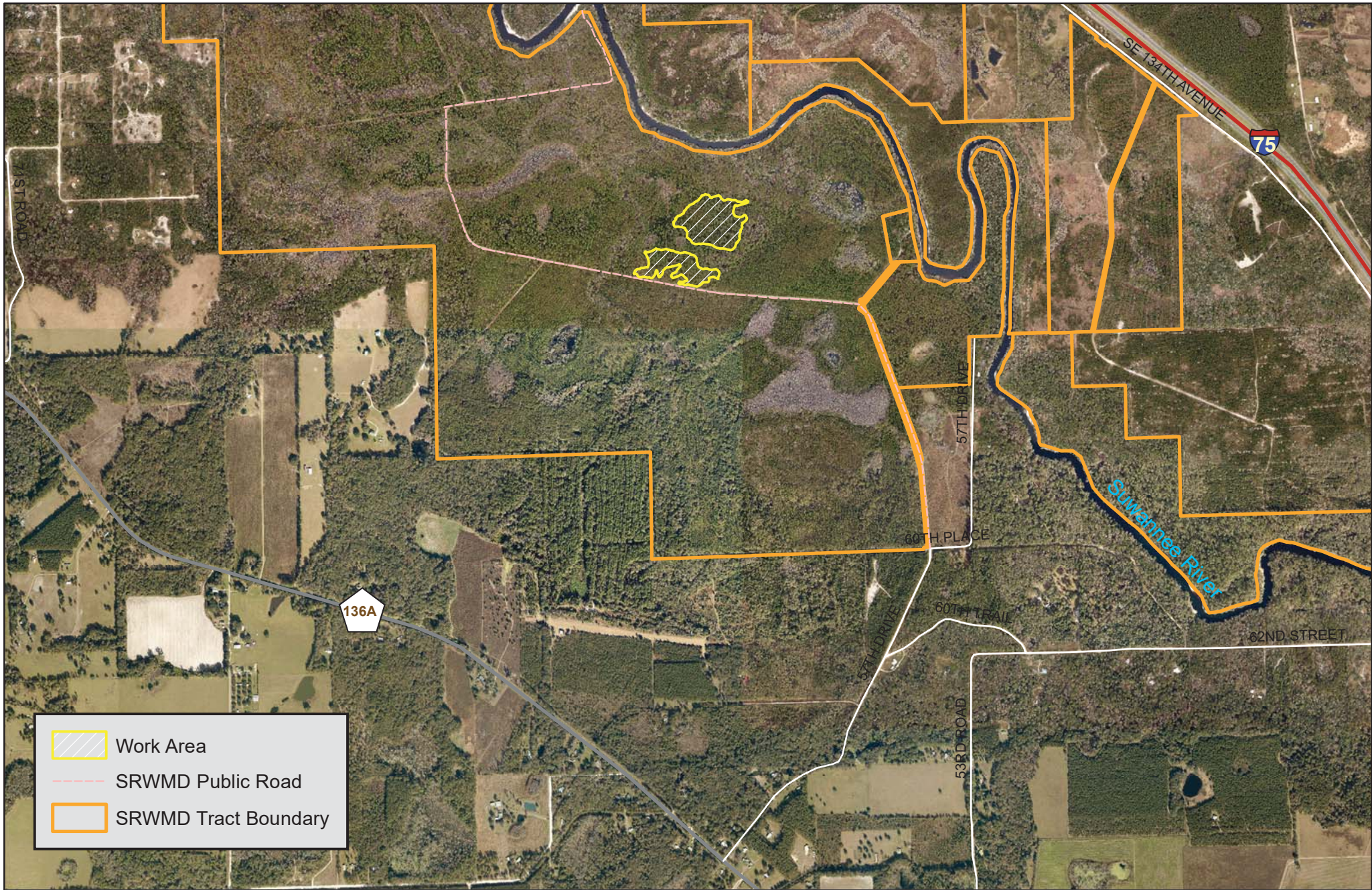



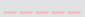

Miles

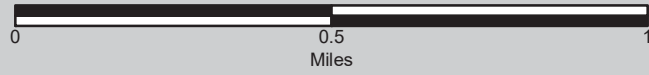


2020-2021 Site Preparation Areas
Mechanical / Chemical / Burning / Reforestation
Troy Springs Tract (76 ac) - Lafayette County
Longleaf Pine (*Pinus palustris*)





	Work Area
	SRWMD Public Road
	SRWMD Tract Boundary



2020-2021 Site Preparation Areas
Chemical / Reforestation
Woods Ferry Tract (15 acres)
Longleaf Pine (*Pinus Palustris*)

