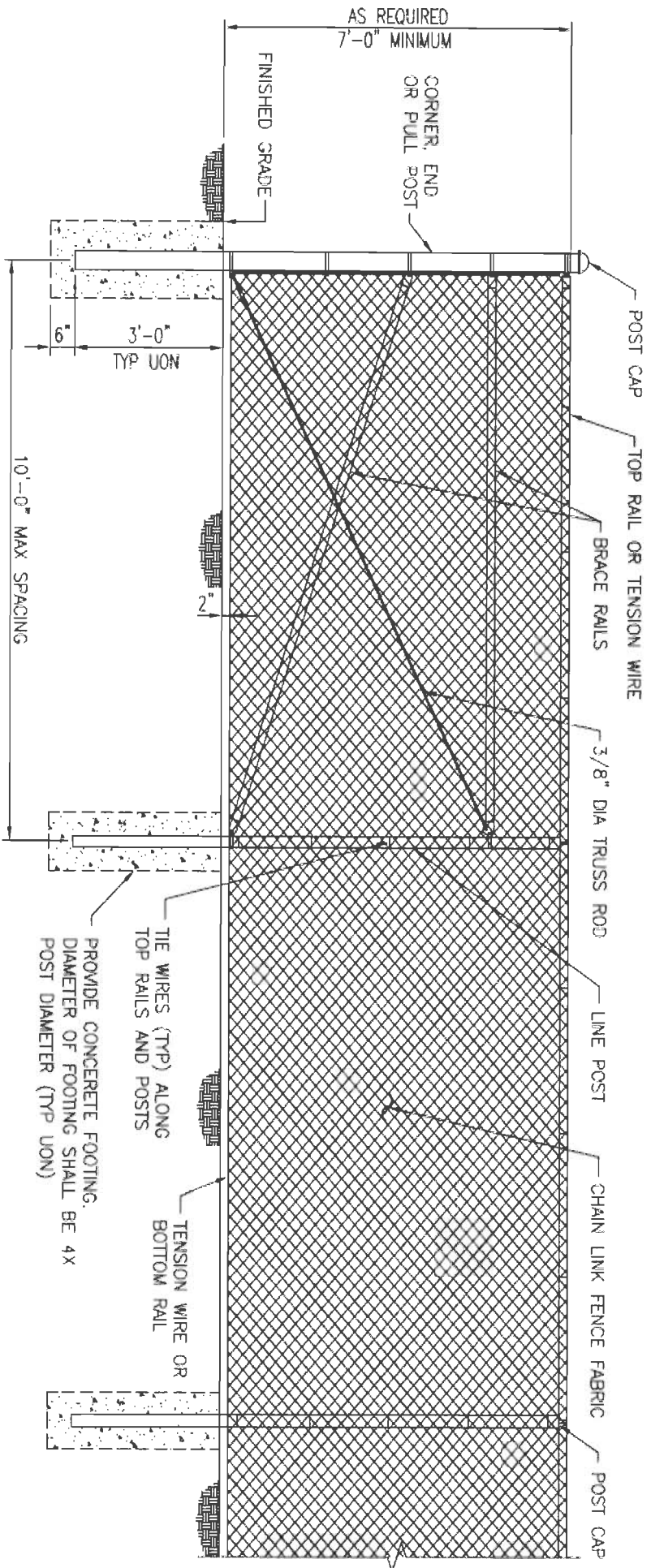
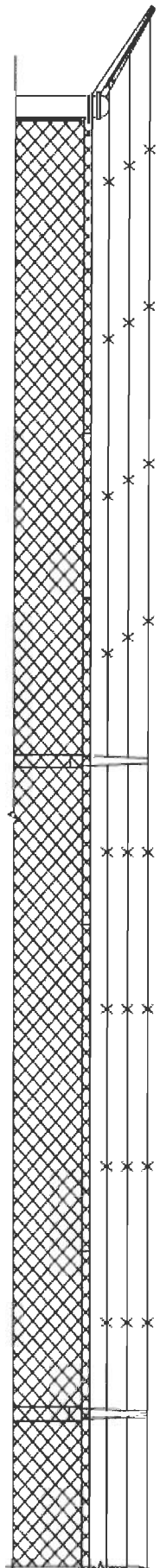


CHAIN-LINK FENCING AND DETAILS, UFC-700



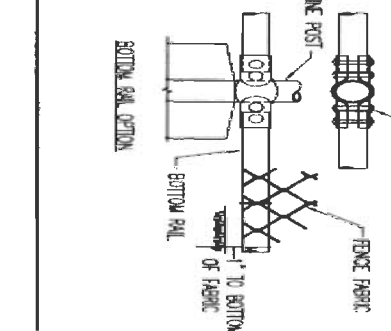
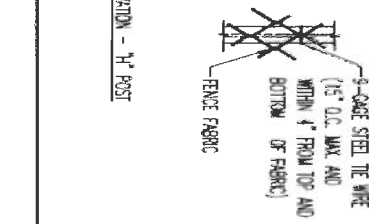
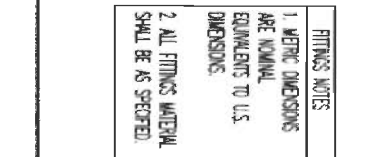
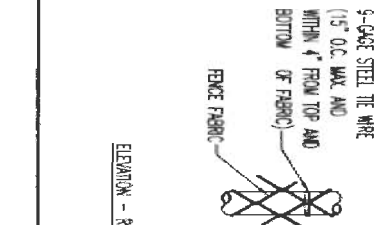
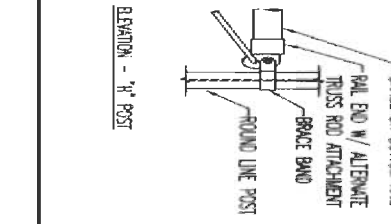
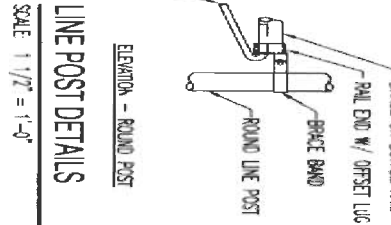
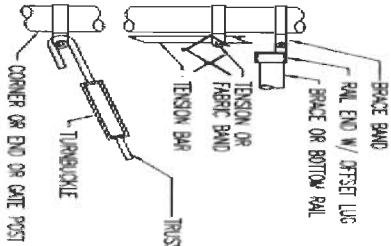
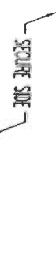
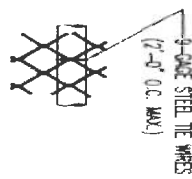
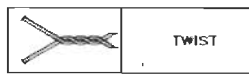
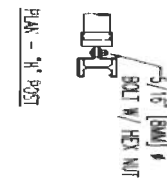
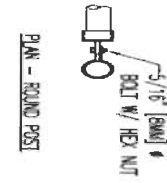
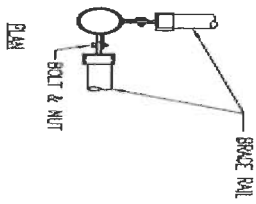
TYPICAL FENCE AND CORNER PANEL ELEVATION

SCALE: 1" = 1'-0"



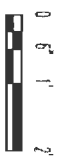
TYPICAL 3 STRAND BARBED WIRE AND SINGLE EXTENSION ARM CONFIGURATION

SCALE: 1" = 1'-0"



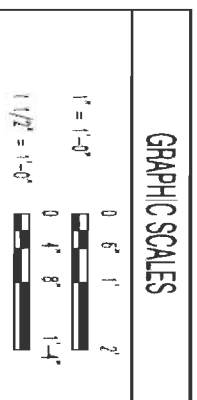
FITTINGS NOTES
 1. METRIC DIMENSIONS ARE NOMINAL EQUIVALENTS TO U.S. DIMENSIONS.
 2. ALL FITTINGS MATERIAL SHALL BE AS SPECIFIED.

GRAPHIC SCALES

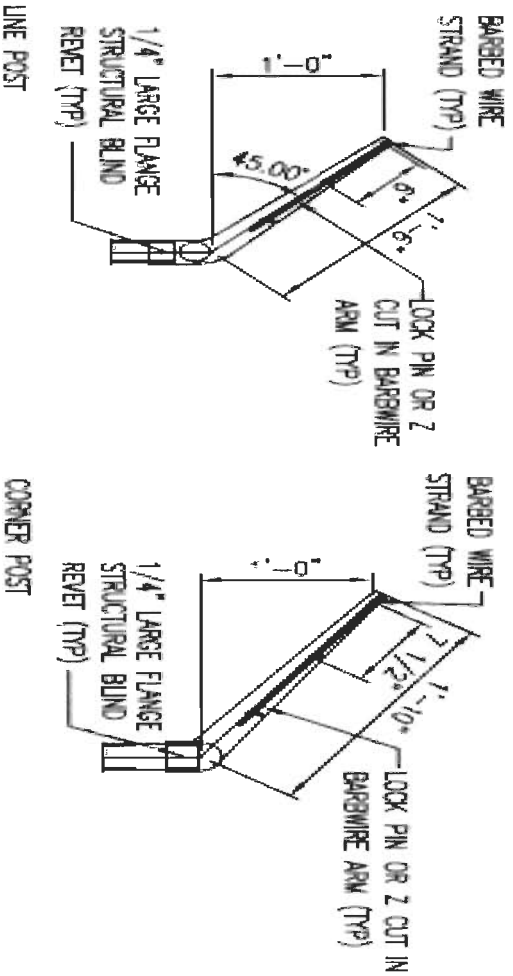


CORNER OR END POSTS

SCALE 1 1/2" = 1'-0"

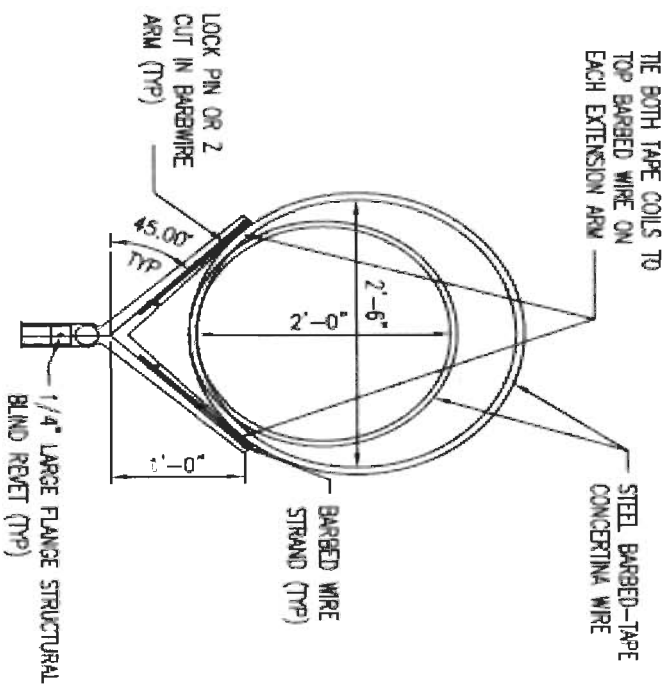


BARBED WIRE/ARRANGEMENT DETAILS, UFC-701



SINGLE EXTENSION ARM DETAILS

SCALE: 1" = 1'-0"

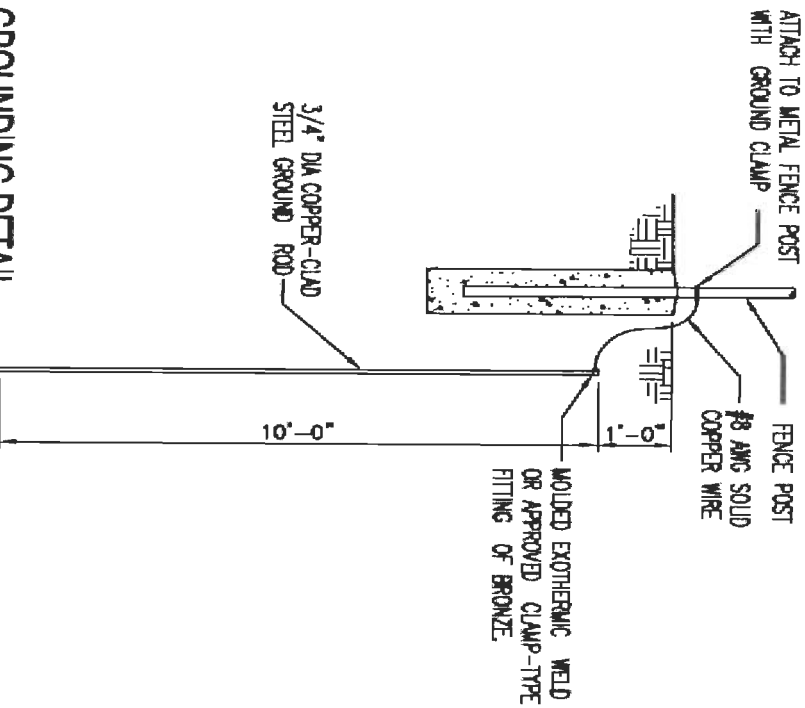


CONCERTINA WIRE MOUNTING

SCALE: 1" = 1'-0"

CHAIN LINK FENCING NOTES

1. FABRIC: THE STANDARD FENCE FABRIC SHALL BE VINYL ZINC OR ALUMINUM-COATED STEEL WIRE CHAIN LINK WITH MESH OPENINGS NOT LARGER THAN TWO INCHES PER SIDE AND A TWISTED AND BARBED SELVAGE AT TOP AND BOTTOM IN ACCORDANCE WITH THE SPECIFICATIONS. UTILIZE 6-GAUGE FOR BASE PERIMETER OR HEIGHTENED SECURITY ZONES AND 9-GAUGE FOR BASE INTERIOR OR WHEN JOINING AN EXISTING FENCE WHICH IS ALREADY 9-GAUGE.
2. FABRIC TIES: ONLY 12-GAUGE STEEL TIES SHALL BE USED. COATING OR PLATING WILL BE ELECTROLYTICALLY COMPATIBLE WITH THE FENCE FABRIC TO INHIBIT CORROSION.
3. REINFORCEMENT: TENSION WIRES SHALL BE INSTALLED AND INTERWOVEN (OR AFFIXED WITH FABRIC TIES) ALONG THE TOP & BOTTOM OF THE FENCE FOR STABILIZATION OF THE FENCE FABRIC.
4. FENCE HEIGHT: CHAIN LINK FABRIC SHALL BE 7' HIGH WITH AN ADDITIONAL 1' IN HEIGHT COMPOSED OF 3 STRANDS OF BARBED WIRE AS REQUIRED. THE TOTAL FENCE HEIGHT SHALL BE 8'.
5. GROUND CLEARANCE: BOTTOM OF THE FENCE FABRIC SHALL BE WITHIN TWO INCHES OF FIRM SOIL.
6. TOP GUARDS: A TOP GUARD IS AN OVERHANG OF BARBED WIRE ALONG THE TOP OF A FENCE, FACING OUTWARD (AWAY FROM PROTECTED SITE) AND UPWARD AT APPROX. 45 ANGLE. TOP GUARD SUPPORTING ARMS WILL BE PERMANENTLY AFFIXED TO THE TOP OF FENCE POSTS TO INCREASE THE OVERALL HEIGHT OF THE FENCE AT LEAST 1 FOOT. THREE STRANDS OF 12-GAUGE BARBED WIRE, EQUALLY SPACED, SHALL BE INSTALLED ON THE SUPPORTING ARMS.
7. FENCE POSTS: SHALL BE ASTM F1063 OR F1083 ROUND PIPE OR SQUARE TUBE AND SHALL BE GALVANIZED IN ACCORDANCE WITH THE SPECIFICATIONS. FENCE POST SPACING AND SIZE (DIAMETER) SHALL BE DETERMINED IN ACCORDANCE WITH CHAIN LINK FENCE MANUFACTURERS' INSTITUTE (WLG 2445). SPACING SHALL NOT EXCEED 10'-0" OC. SIZE (DIAMETER) SHALL NOT BE LESS THAN THAT SPECIFIED.



GROUNDING DETAIL

NO SCALE

GRAPHIC SCALES

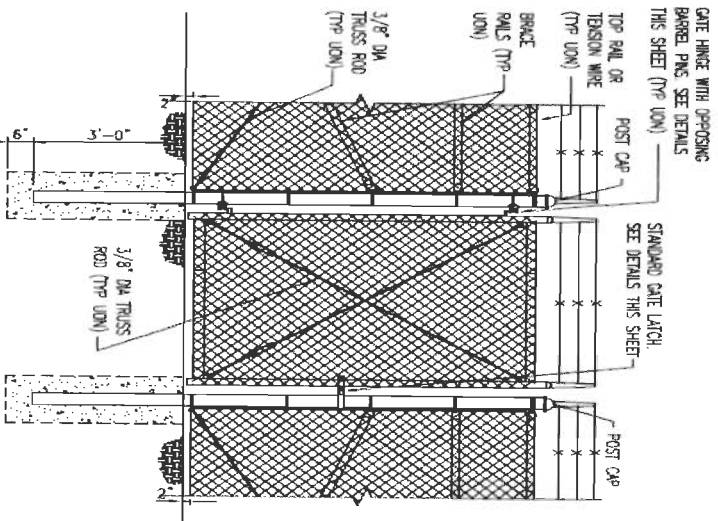
1" = 1'-0"



SINGLE SWING WALKING GATE, UFC-702

PLAN SINGLE SWING GATE

SCALE: 1" = 1'-0"

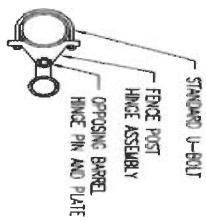


TYPICAL FENCE SINGLE SWING GATE ELEVATION
SCALE: 1/2" = 1'-0"

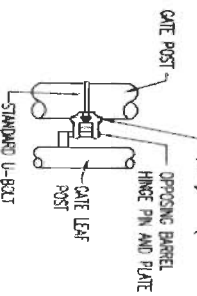
SINGLE OR DOUBLE LEAF GATES			
NOM HEIGHT (H)	UPRIGHT HT (U)	FRAME HT (F)	
NOM HT INCLUDING BARBED WIRE	ACTUAL DIM	ACTUAL DIM	
8'-0" (2439MM)	7'-10" (2399MM)	6'-8 1/2" (2043MM)	

SINGLE LEAF GATES			
OPENING	GATE POSTS	HINGE SPACE (S)	
FACE TO FACE	SQUARE & ROUND SIZES	POST TO UPRIGHT	
3'-0" (914MM)	2.5"(63.5MM) SQ x 3/16" TH	FOR SQUARE & ROUND GATE POSTS	
6'-0" (1829MM)	2.875" (73MM) OD	2 1/4" (57MM)	
6'-0" (1829MM) THROUGH	4" (102MM) SQ x 3/16" TH OR 4" (102MM) OD	ROUND GATE POSTS & ROUND GATE POSTS	
12'-0" (3657MM) THROUGH	6" (152MM) SQ x 3/16" TH OR 6.625" (168MM) OD	FOR SQUARE & ROUND GATE POSTS	
19'-0" (5791MM) THROUGH	8" (203MM) SQ x 1/4" TH OR 8.625" (219MM) OD	FOR SQUARE & ROUND GATE POSTS	
23'-0" (7010MM) THROUGH			

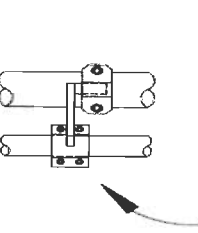
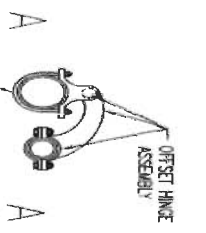
NOTE: IF GATE HINGES ARE NOT OPPOSING (AS SHOWN ABOVE) OR LEAF IS NOT LOCKED MECHANICALLY TO THE HINGES, WELD AN ANGLE PLATE, OR BLOCK ABOVE HINGE TO RESTRICT LEAF FROM BEING REMOVED OR LIFTED OFF. RESTRICTION SHALL NOT HINDER OPERATION OF GATE.



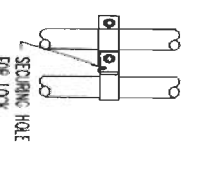
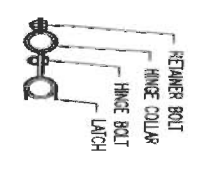
(*) WELD HINGE TO POST IF INSTALLING CABLE REINFORCEMENT ON GATES. ENSURE CORRECT HEIGHT FOR FULL OPERATION PRIOR TO WELDING (TYPICAL).



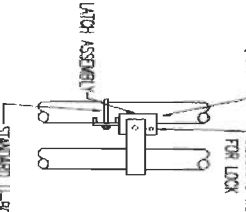
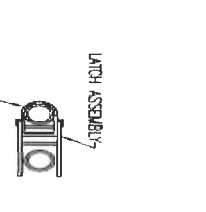
GATE HINGE DETAIL
SCALE: 1 1/2" = 1'-0"



OFFSET HINGE DETAIL
SCALE: 1 1/2" = 1'-0"

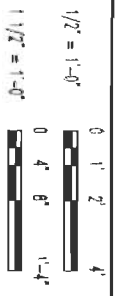


GATE LATCH DETAIL
SCALE: 1 1/2" = 1'-0"



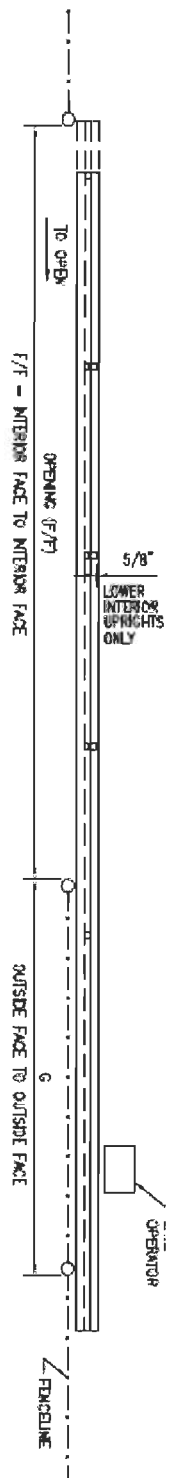
FILCRUM LATCH DETAIL
SCALE: 1 1/2" = 1'-0"

GRAPHIC SCALES



Design single swing gates to match fence fabric height, with an additional 1 ft (305 mm) of three strand barbed wire added to the height if barb wire is part of the fence structure. The gate opening should not exceed a width of 14 ft (4.3 m).

CANTILEVER SLIDING GATE, UFC-703

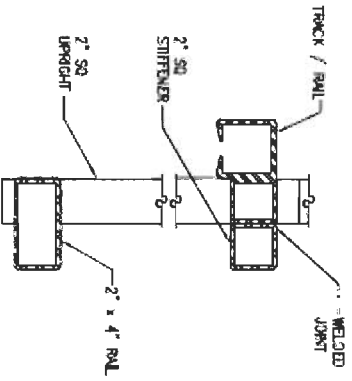
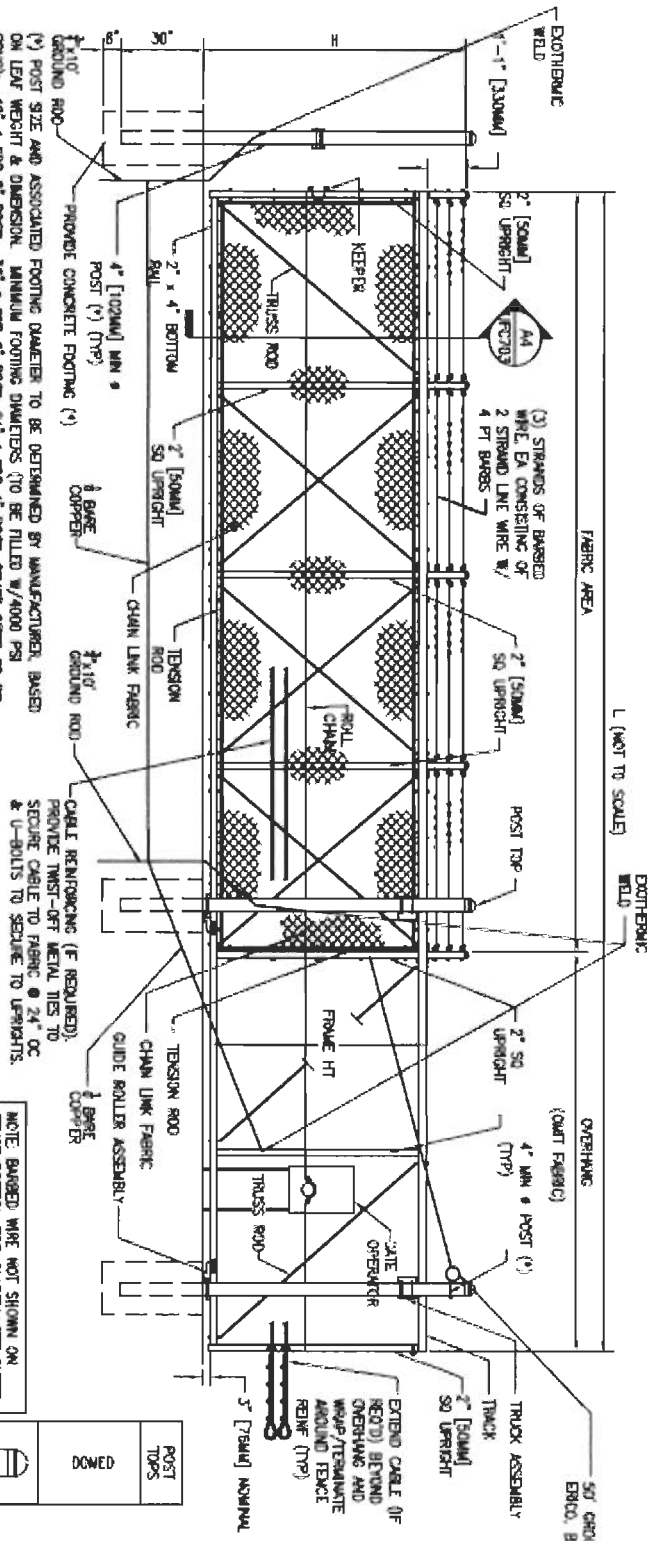


GATE PLAN

NOT TO SCALE
SAMPLING OF SIZES

OPENING (F/F)	MINIMUM HEIGHT (H)	LENGTH (L)	GATE POSTS (G)	BAYS / OVERHANG
37'-0"	8'-0"	52'-5"	18'-0"	5 (FABRIC) / 2 (W/O)
30'-0"	8'-0"	42'-5"	12'-0"	4 (FABRIC) / 2 (W/O)
24'-0"	8'-0"	38'-5"	12'-0"	3 (FABRIC) / 2 (W/O)

CHNL DIMS UFC-703



TYPICAL SINGLE CANTILEVERED SLIDING GATE ELEVATION - (4) BAYS SHOWN

NOT TO SCALE

WITH ROUND POSTS & WITH BARBED WIRE

UFC-703 | UFC-703

SECTION (TYP)

NOT TO SCALE

UFC-703 | UFC-703

NOTE: BARBED WIRE NOT SHOWN ON FENCE PORTION FOR CLARITY. SEE SHEET UFC-5-701 FOR BARBED WIRE TYPE.

POST TOPS
DOWNED

GATE POST FOUNDATIONS

Steel Post Diameter	Foundation Hole Diameter	Gate Leaf Length
2.875 in (73 mm)	18 in (450 mm)	0 - 6 ft (0 - 1.8 m)
4.000 in (101.6 mm)	24 in (609.6 mm)	6 - 12 ft (1.8 - 3.7 m)
6.625 in (168.3 mm)	36 in (914.4 mm)	12 - 18 ft (3.7 - 5.5 m)
8.625 in (219 mm)	40 in (1016 mm)	18 - 24 ft (5.5 - 7.3 m)

