

Ryan D. Fryman, P.E.  
Florida License # 55472

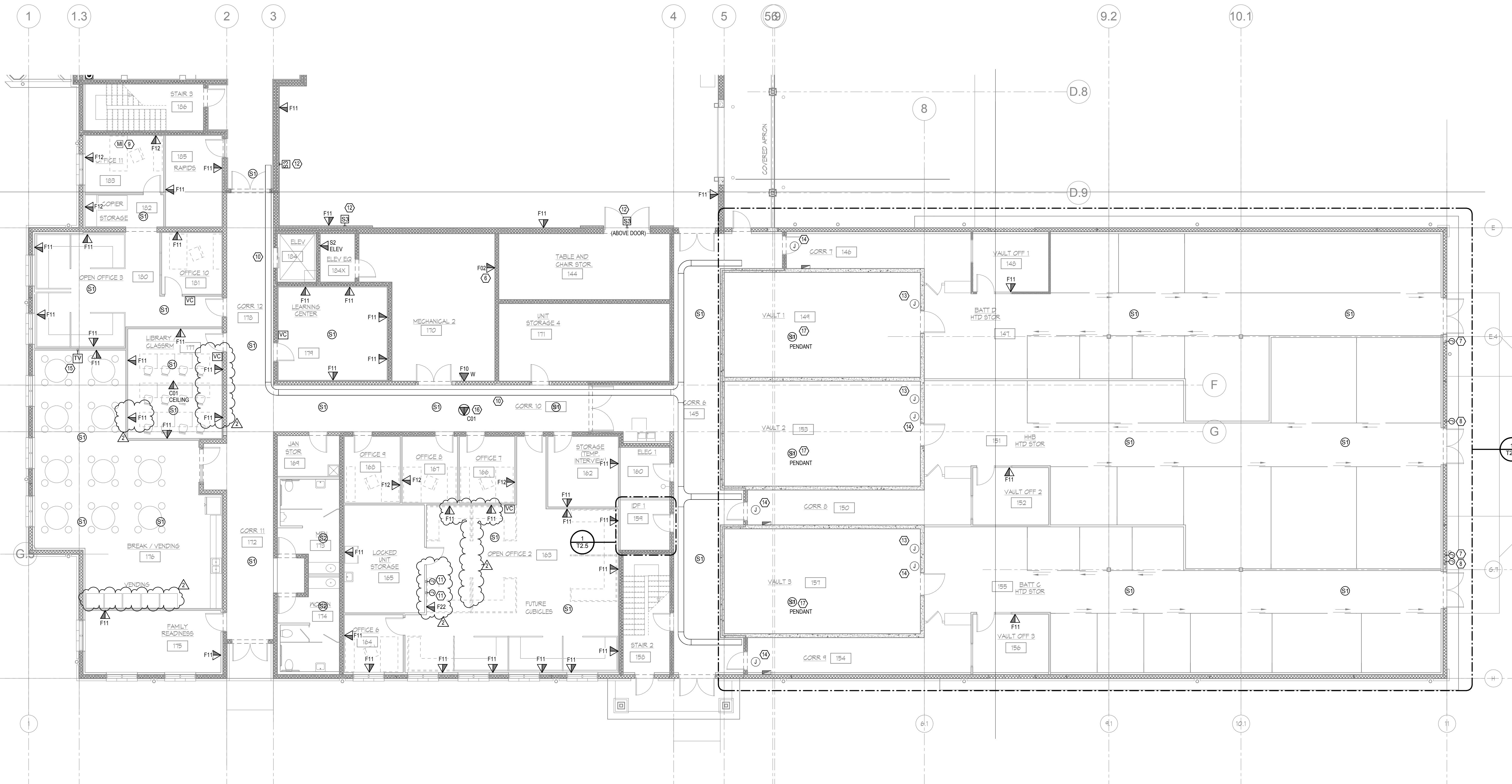
REVISIONS
1 6-29-16 ADDENDUM #2
2 7-20-16 ADDENDUM #006

READINESS BLDG - 1ST FLOOR - SOUTH - TECHNOLOGY

DATE	JUNE 13, 2016
D.B.	Designer
C.B.	Approver
JOB NO.	09005

100% BID FINAL

T2.2



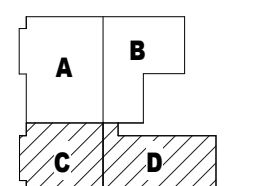
**1 1ST FLOOR - READINESS BLDG - SOUTH - TECHNOLOGY**  
1/8" = 1'-0"

- TECHNOLOGY KEYED NOTES:**
- SEE ENLARGED PLAN, SHEET T2.5 FOR TELECOMMUNICATIONS ROOM FLOOR PLAN.
  - MODULAR FURNITURE DATA LOCATION. COORDINATE TERMINATION WITH FURNITURE VENDOR PRIOR TO ROUGH-IN.
  - PROVIDE AIPHONE IX SERIES CONTROLLER IN EQUIPMENT RACK (ALTERNATES ARE NOT ACCEPTABLE). COORDINATE LOCATION WITH OWNER PRIOR TO ROUGH-IN.
  - PROVIDE AIPHONE IX SERIES VIDEO DOOR STATION AND CORBY KEYPAD (MODEL #6522) IN A WEATHER-PROOF ENCLOSURE. (ALTERNATES ARE NOT ACCEPTABLE). PROVIDE DOOR RELEASE RELAYS, POWER SUPPLIES, AND CABLING. INTERCOM AND KEYPAD SHALL RELEASE MAGNETIC LOCKS AND ALLOW ACCESS INDEPENDENTLY. PROVIDE ALL PROGRAMMING NECESSARY FOR COMPLETE OPERATION. COORDINATE WITH DOOR HARDWARE VENDOR PRIOR TO INSTALLATION.

- PROVIDE ELECTRIC STRIKES. DOOR POSITION SENSOR, REQUEST TO EXIT PIR AND REQUEST TO EXIT MANUAL PUSH BUTTON. PROVIDE POWER SUPPLY AND INTEGRATE WITH AIPHONE/KEYPAD DEVICES.
- PROVIDE DATA OUTLET FOR BUILDING AUTOMATION SYSTEM INTERFACE. COORDINATE LOCATION WITH MECHANICAL CONTROLS CONTRACTOR.
- PROVIDE WEATHERPROOF JUNCTION BOX FOR SIREN BOX 1.
- PROVIDE WEATHERPROOF JUNCTION BOX WITH COVER FOR FUTURE CARD ACCESS. INSTALL AT 48" AFF.
- PROVIDE INTERCOM MASTER STATION, AIPHONE IX SERIES (ALTERNATES NOT ACCEPTABLE), IX-BMV, PROVIDE POWER SUPPLY, RELAYS AND CABLING FOR CONNECTION TO MASTER CONTROLLER.
- PROVIDE 12" X 4" WIRE BASKET CABLE TRAY. COORDINATE LOCATION WITH OTHER TRADES.
- PROVIDE DOUBLE GANG JUNCTION BOX WITH 1" CONDUIT TO NEAREST CABLE TRAY FOR UTP CABLE FEEDING MODULAR FURNITURE DATA OUTLETS. PROVIDE DOUBLE GANG FACEPLATE WITH GROMMETTED HOLE.

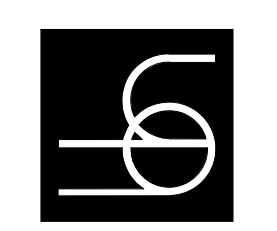
- PROVIDE WALL MOUNTED SPEAKERS IN DRILL HALL. DESIGN SELECTION IS TOA BS-1034.
- PROVIDE 1" CONDUIT WITH A CAT6 CABLE TO THE MDF ROOM. COORDINATE CABLE TERMINATION WITH OWNER AND OWNER PROVIDED ACCESS CONTROL PANEL.
- PROVIDE A 3/4" CONDUIT FROM THE MAIN VAULT ACCESS CONTROL PANEL. LOCATED IN VAULT 1. STUB CONDUIT INTO A JUNCTION BOX ABOVE CEILING FOR OWNER PROVIDED ACCESS CONTROL EQUIPMENT.
- COORDINATE EXACT TV LOCATION WITH ARCHITECTURAL ELEVATIONS PRIOR TO ROUGH-IN.
- FROM VACANT PORTS ON THE FAR RIGHT HAND SIDE OF MODULAR PATCH PANEL "BEP", PROVIDE CAT6 DROP WITH RJ45 PLUG, SECURE ON A J-HOOK WITH 10' SLACK COIL. THE WAP WILL BE INSTALLED AT A LATER DATE BY OTHERS.
- VAULT SPEAKERS SHALL BE 8" PENDANT MOUNT IN CONDUIT

- TECHNOLOGY GENERAL NOTES:**
- COORDINATE ALL DEVICE MOUNTING HEIGHTS WITH ARCHITECTURAL ELEVATIONS AND OTHER TRADES.
  - FROM THE MAIN TELECOMMUNICATIONS ROOM ON THE FIRST FLOOR, PROVIDE COPPER AND OPTICAL FIBER BACKBONE CABLES TO EACH COMMUNICATIONS ROOM ON THE SECOND LEVEL. SEE RISER DRAWING FOR DETAILS.
  - EACH OUTLET SHALL HAVE A DEDICATED 1" CONDUIT STUBBED UP ABOVE CEILING AND RUN TO THE NEAREST CABLE TRAY. J-HOOKS ARE NOT ALLOWED.
  - COMPRESSION FITTINGS SHALL BE USED FOR ALL CONDUITS LOCATED IN THE VAULT AND VAULT STORAGE AREA.



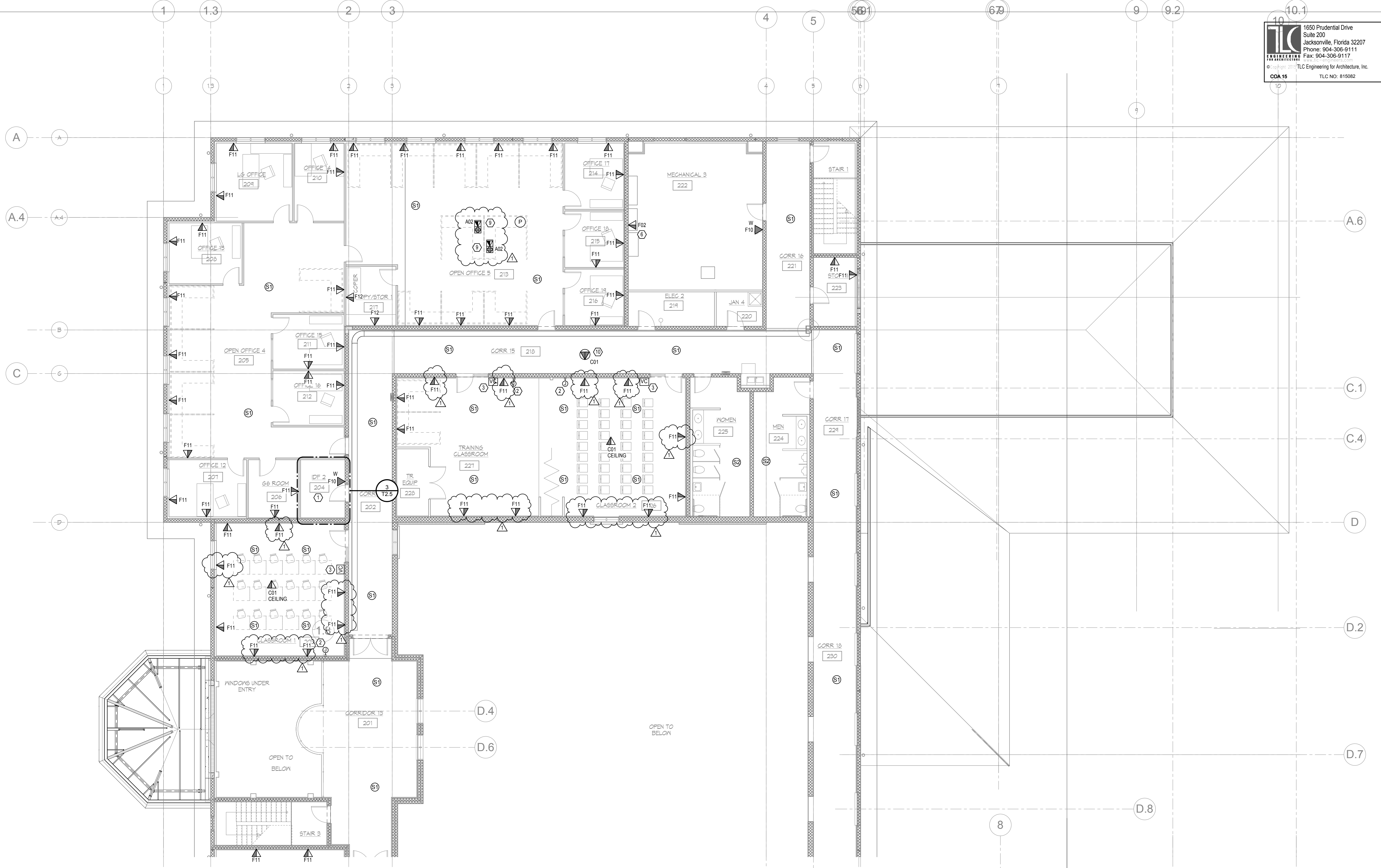
**KEY PLAN**

7/18/2016 12:16:58 PM C:\New 2016 Local\000815082\_T2.2\_F16\_1.dwg Ryan



REVISIONS	DATE	BY	DESCRIPTION
1	7-20-16	BJ	ADDENDUM #006

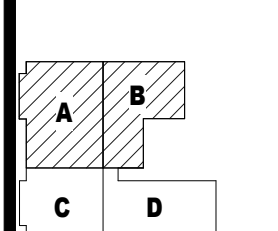
DATE	JUNE 13, 2016
D.B.	BJ
C.B.	RF
JOB NO.	09005



- TECHNOLOGY KEYED NOTES:**
- SEE ENLARGED PLAN, SHEET T2.5 FOR TELECOMMUNICATIONS ROOM FLOOR PLAN.
  - PROVIDE DOUBLE GANG JUNCTION BOX WITH 1-1/2" CONDUIT STUBBED UP ABOVE ACCESSIBLE CEILING SPACE FOR OFOI AUDIO VISUAL CONNECTIONS.
  - LOCAL VOLUME CONTROL FOR PAGING SYSTEM.
  - PROVIDE JUNCTION BOXES AND CONDUIT FOR OFOI INTRUSION DETECTION SYSTEM. PROVIDE 3/4" CONDUIT FROM EACH LOCATION TO ALARM CONTROL PANEL LOCATION. COORDINATE LOCATION WITH INTRUSION DETECTION VENDOR DRAWINGS.
  - PROVIDE (1) 1" CONDUIT TO COMMUNICATIONS ROOM AND (1) 1" CONDUIT TO EXTERNAL ALARM LOCATION.
  - DATA OUTLET FOR BUILDING AUTOMATION SYSTEM INTERFACE. COORDINATE LOCATION WITH MECHANICAL CONTROLS CONTRACTOR.
  - PROVIDE 12" x 4" WIRE BASKET CABLE TRAY.
  - PROVIDE DOUBLE GANG JUNCTION BOX WITH 1" CONDUIT TO NEAREST CABLE TRAY FOR UTP CABLE FEEDING MODULAR FURNITURE DATA OUTLETS. PROVIDE DOUBLE GANG FACEPLATE WITH GROMMETTED HOLE.
  - MODULAR FURNITURE DATA LOCATION. COORDINATE TERMINATION WITH FURNITURE VENDOR PRIOR TO ROUGH-IN.
  - FROM VACANT PORTS ON THE FAR RIGHT HAND SIDE OF MODULAR PATCH PANEL "BEP", PROVIDE CAT6 DROP WITH RJ45 PLUG, SECURE ON A J-HOOK WITH 10" SLACK COIL. THE WAP WILL BE INSTALLED AT A LATER DATE BY OTHERS.

**1 2ND FLOOR - READINESS BLDG - NORTH - TECHNOLOGY**  
 1/8" = 1'-0"

- TECHNOLOGY GENERAL NOTES:**
- COORDINATE ALL DEVICE MOUNTING HEIGHTS WITH ARCHITECTURAL ELEVATIONS AND OTHER TRADES.
  - FROM THE MAIN TELECOMMUNICATIONS ROOM ON THE FIRST FLOOR, PROVIDE COPPER AND OPTICAL FIBER BACKBONE CABLES TO EACH COMMUNICATIONS ROOM ON THE SECOND LEVEL. SEE RISER DRAWING FOR DETAILS.
  - EACH OUTLET SHALL HAVE A DEDICATED 1" CONDUIT STUBBED UP ABOVE CEILING AND RUN TO THE NEAREST CABLE TRAY. J-HOOKS ARE NOT ALLOWED.



**KEY PLAN**



Ryan D. Fryman, P.E.  
Florida License # 55472

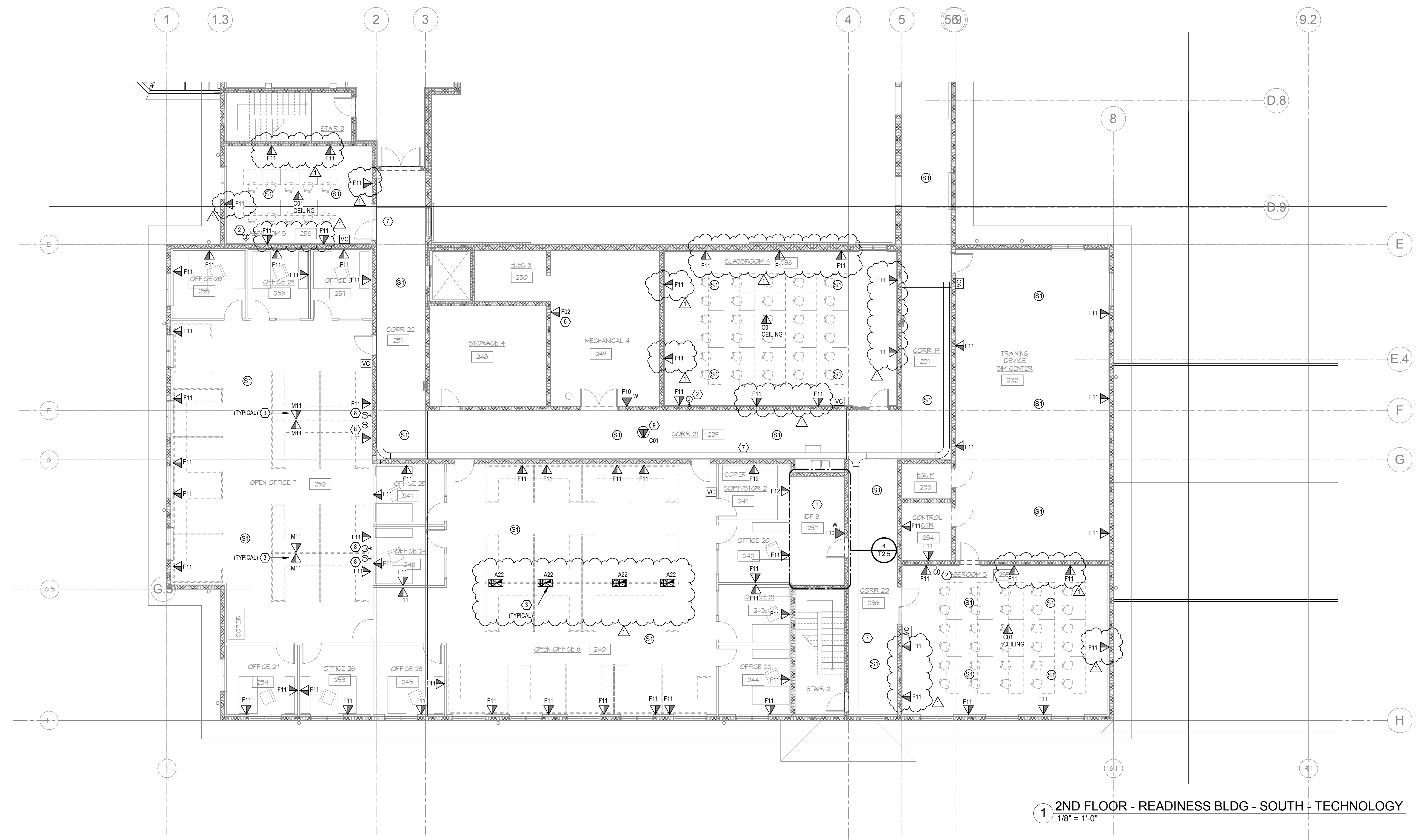
REVISIONS	DATE	DESCRIPTION
1	7-20-16	ADDENDUM #006

**READINESS  
BLDG - 2ND  
FLOOR - SOUTH  
- TECHNOLOGY**

DATE	JUNE 13, 2016
D.B.	BJ
C.B.	SDF
JOB NO.	09005

100% BID FINAL

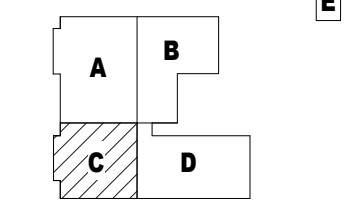
T2.4



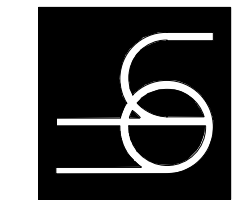
**1 2ND FLOOR - READINESS BLDG - SOUTH - TECHNOLOGY**  
1/8" = 1'-0"

- TECHNOLOGY KEYED NOTES:**
- ① SEE ENLARGED PLAN, SHEET T2.5 FOR TELECOMMUNICATIONS ROOM FLOOR PLAN.
  - ② PROVIDE DOUBLE GANG JUNCTION BOX WITH 1-1/2" CONDUIT STUBBED UP ABOVE ACCESSIBLE CEILING SPACE FOR GFGI AUDIO VISUAL CONNECTIONS.
  - ③ MODULAR FURNITURE DATA LOCATION. COORDINATE TERMINATION WITH FURNITURE VENDOR PRIOR TO ROUGH-IN.
  - ④ PROVIDE JUNCTION BOXES AND CONDUIT FOR GFGI INTRUSION DETECTION SYSTEM. PROVIDE 3/4" CONDUIT FROM EACH LOCATION TO ALARM CONTROL PANEL LOCATION. COORDINATE LOCATION WITH INTRUSION DETECTION VENDOR DRAWINGS.
  - ⑤ PROVIDE (1) 1" CONDUIT TO COMMUNICATIONS ROOM AND (1) 1" CONDUIT TO EXTERNAL ALARM LOCATION.
  - ⑥ DATA OUTLET FOR BUILDING AUTOMATION SYSTEM INTERFACE. COORDINATE LOCATION WITH MECHANICAL CONTROLS CONTRACTOR.
  - ⑦ PROVIDE 12" x 4" WIRE BASKET CABLE TRAY.
  - ⑧ PROVIDE DOUBLE GANG JUNCTION BOX WITH 1" CONDUIT TO NEAREST CABLE TRAY FOR UTP CABLE FEEDING MODULAR FURNITURE DATA OUTLETS. PROVIDE DOUBLE GANG FACEPLATE WITH GROMMETTED HOLE.
  - ⑨ FROM VACANT PORTS ON THE FAR RIGHT HAND SIDE OF MODULAR PATCH PANEL "SEP" PROVIDE CAT6 DROP WITH R45 PLUG. SECURE ON A J-HOOK WITH 10' SLACK COIL. THE WAP WILL BE INSTALLED AT A LATER DATE BY OTHERS.

- TECHNOLOGY GENERAL NOTES:**
- 1. COORDINATE ALL DEVICE MOUNTING HEIGHTS WITH ARCHITECTURAL ELEVATIONS AND OTHER TRADES.
  - 2. FROM THE MAIN TELECOMMUNICATIONS ROOM ON THE FIRST FLOOR, PROVIDE COPPER AND OPTICAL FIBER BACKBONE CABLES TO EACH COMMUNICATIONS ROOM ON THE SECOND LEVEL. SEE RISER DRAWING FOR DETAILS.
  - 3. EACH OUTLET SHALL HAVE A DEDICATED 1" CONDUIT STUBBED UP ABOVE CEILING AND RUN TO THE NEAREST CABLE TRAY. J-HOOKS ARE NOT ALLOWED.



**KEY PLAN**



Ryan D. Fryman, P.E.  
 Florida License # 55472

REVISIONS	
1	7-20-16 ADDENDUM #006

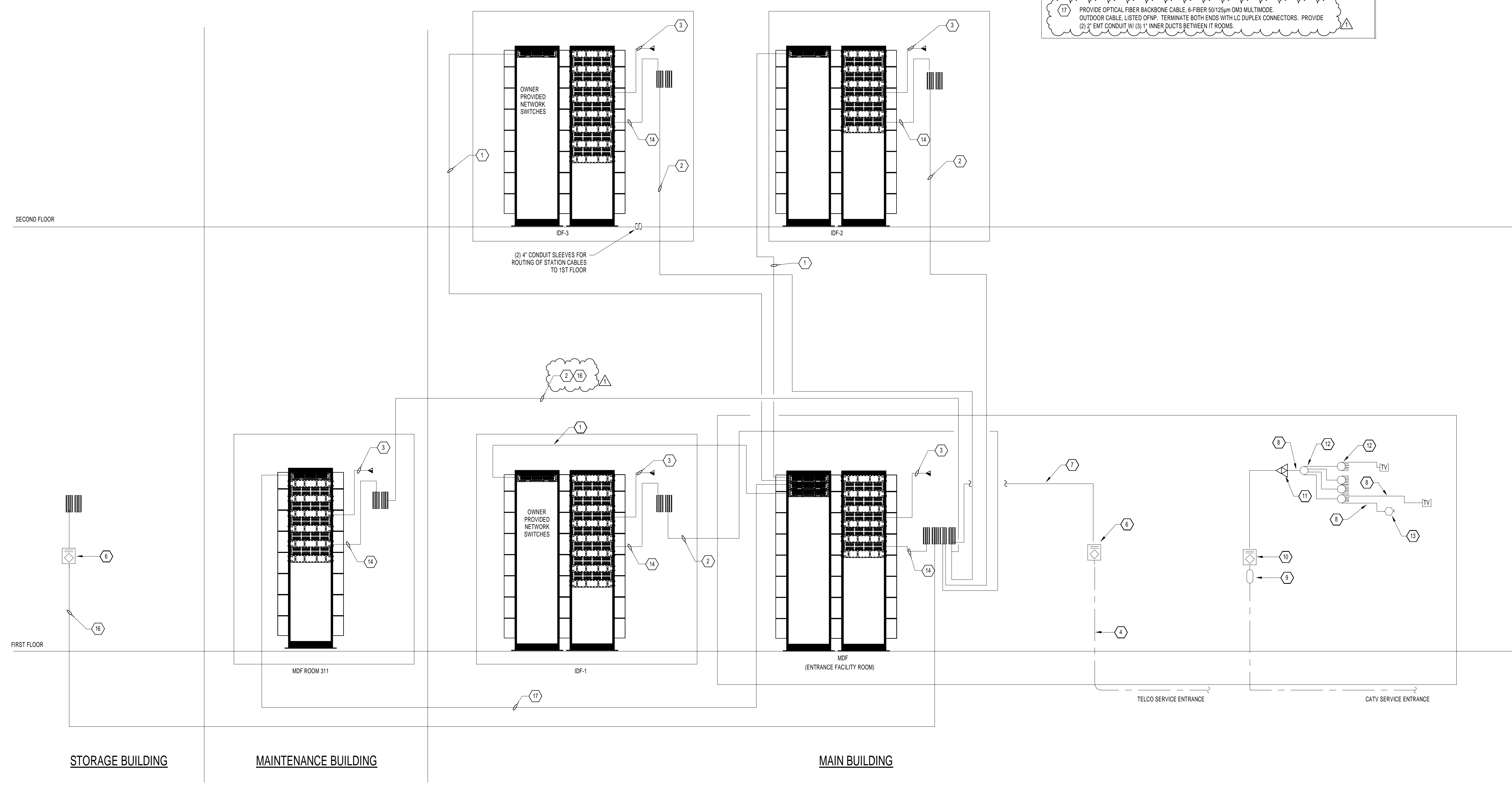
**TECHNOLOGY RISERS**

DATE	JUNE 13, 2016
D.B.	BJ
C.B.	RF
JOB NO.	09005

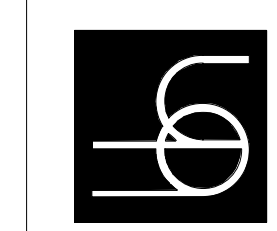
100% BID FINAL

T5.1

- RISER DIAGRAM NOTES:**
- 1 PROVIDE OPTICAL FIBER BACKBONE CABLE, 6-FIBER 50/125µm OM3 MULTIMODE, INDOOR CABLE, LISTED OFNP. TERMINATE BOTH ENDS WITH SC DUPLEX CONNECTORS. PROVIDE (1) 4" EMT CONDUIT W/ (3) 1" INNER DUCTS BETWEEN IT ROOMS.
  - 2 PROVIDE (1) COPPER BACKBONE CABLE, 25 PAIR, LISTED CMP/OSP. TERMINATE BOTH ENDS ON WALL MOUNTED 66-CONNECTOR BLOCKS. TERMINATE BOTH ENDS OF CABLE TO THE INPUT SIDE OF THE GROUNDED BUILDING ENTRANCE PROTECTORS "BEPs".
  - 3 PROVIDE CAT6 UTP CABLE TO WORK STATION OUTLETS AS SHOWN ON FLOOR PLANS. ALL OUTLETS ARE CAT6, BASE BID.
  - 4 VOICE ENTRANCE CABLING.
  - 5 NOT USED.
  - 6 NOT USED.
  - 7 CAT3 MULTIPAIR COPPER TIE CABLE BETWEEN PET AND DISTRIBUTION FIELD.
  - 8 PROVIDE QUAD SHIELD, RG-59 COAXIAL CABLE TO TV LOCATIONS AS SHOWN ON PLANS, BASIS OF DESIGN: COMMSCOPE 5540. TERMINATE ALL UNUSED TAPS WITH 75 OHM TERMINATORS.
  - 9 COAX TRANSITION SPLICE TO RG-11 COAX.
  - 10 COAX PRIMARY PROTECTION, BASIS OF DESIGN, EDCO #CATV-145A.
  - 11 PROVIDE DISTRIBUTION AMPLIFIER. BASIS OF DESIGN: BLONDER TONGUE BIDA 86A-30.
  - 12 PROVIDE DISTRIBUTION SPLITTERS. BASIS OF DESIGN: BLONDER TONGUE SXRS-2 AND SXRS-8.
  - 13 PROVIDE 75 OHM TERMINATION TAPS FOR ALL UNUSED SPLITTER PORTS.
  - 14 PROVIDE (1) 25-PAIR CABLES FROM WALL MOUNTED 66 DOUBLE SIDED CONNECTING BLOCKS TO 48-PORT VOICE PATCH PANEL. TERMINATE (1) PAIRS ON PINS 4 AND 5 USING T368A SCHEME. USE VACANT PORTS ON THE RIGHT HAND SIDE OF THE BEP PATCH PANEL TO TERMINATE MISC. TYPE CIRCUITS, SUCH AS: FAX, ELEVATOR, IDS, BAS, ADVANCED METERING, AND WAPs.
  - 15 PROVIDE OPTICAL FIBER BACKBONE CABLE, 6-FIBER 50/125µm OM3 MULTIMODE, INDOOR/OUTDOOR CABLE, LISTED OFNP. TERMINATE BOTH ENDS WITH SC DUPLEX CONNECTORS.
  - 16 PROVIDE 25-PAIR CAT3 COPPER CABLE, OSP RATED. PROVIDE SURGE PROTECTION ON BOTH ENDS.
  - 17 PROVIDE OPTICAL FIBER BACKBONE CABLE, 6-FIBER 50/125µm OM3 MULTIMODE, OUTDOOR CABLE, LISTED OFNP. TERMINATE BOTH ENDS WITH LC DUPLEX CONNECTORS. PROVIDE (2) 2" EMT CONDUIT W/ (3) 1" INNER DUCTS BETWEEN IT ROOMS.



C:\New\2016 Local\Modell\2016\_ADDENDUM\_006\_P16.compendium.rvt 7/13/2016 8:45:19 AM



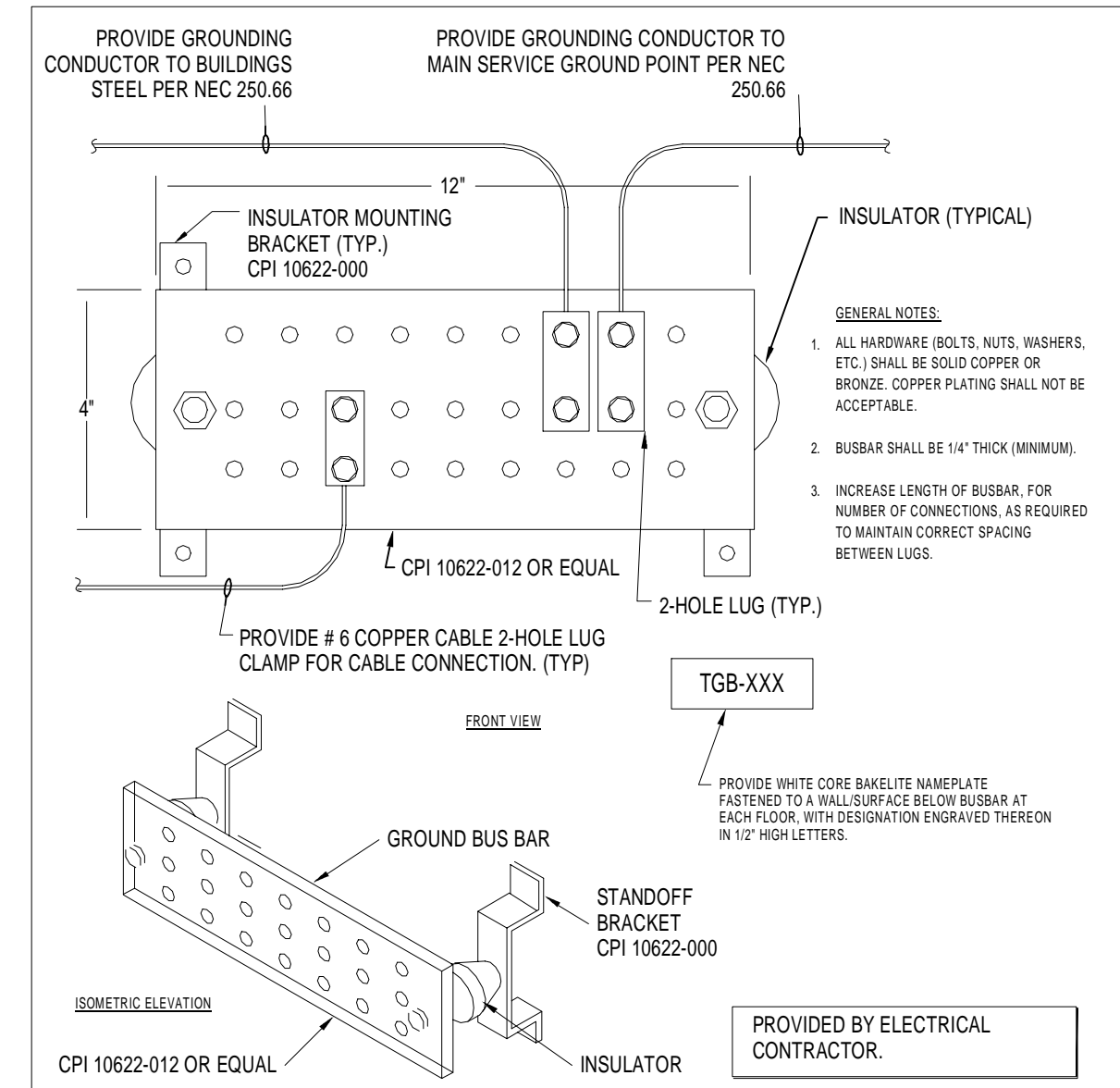
REVISIONS	
1	7-20-16 ADDENDUM #006

**TECHNOLOGY  
DETAILS**

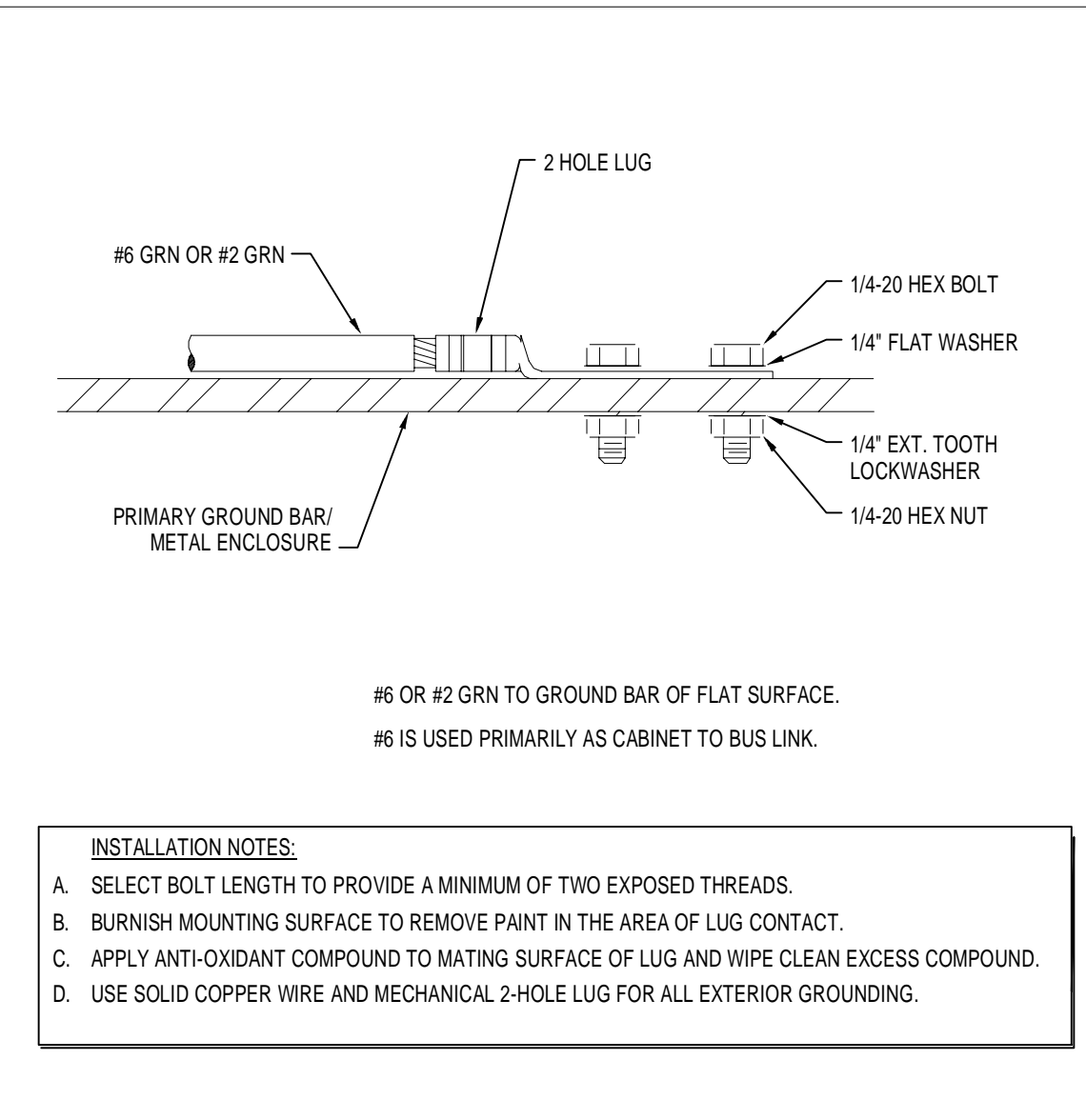
DATE	JUNE 13, 2016
D.B.	BJ
C.B.	RF
JOB NO.	09005

100% BID FINAL

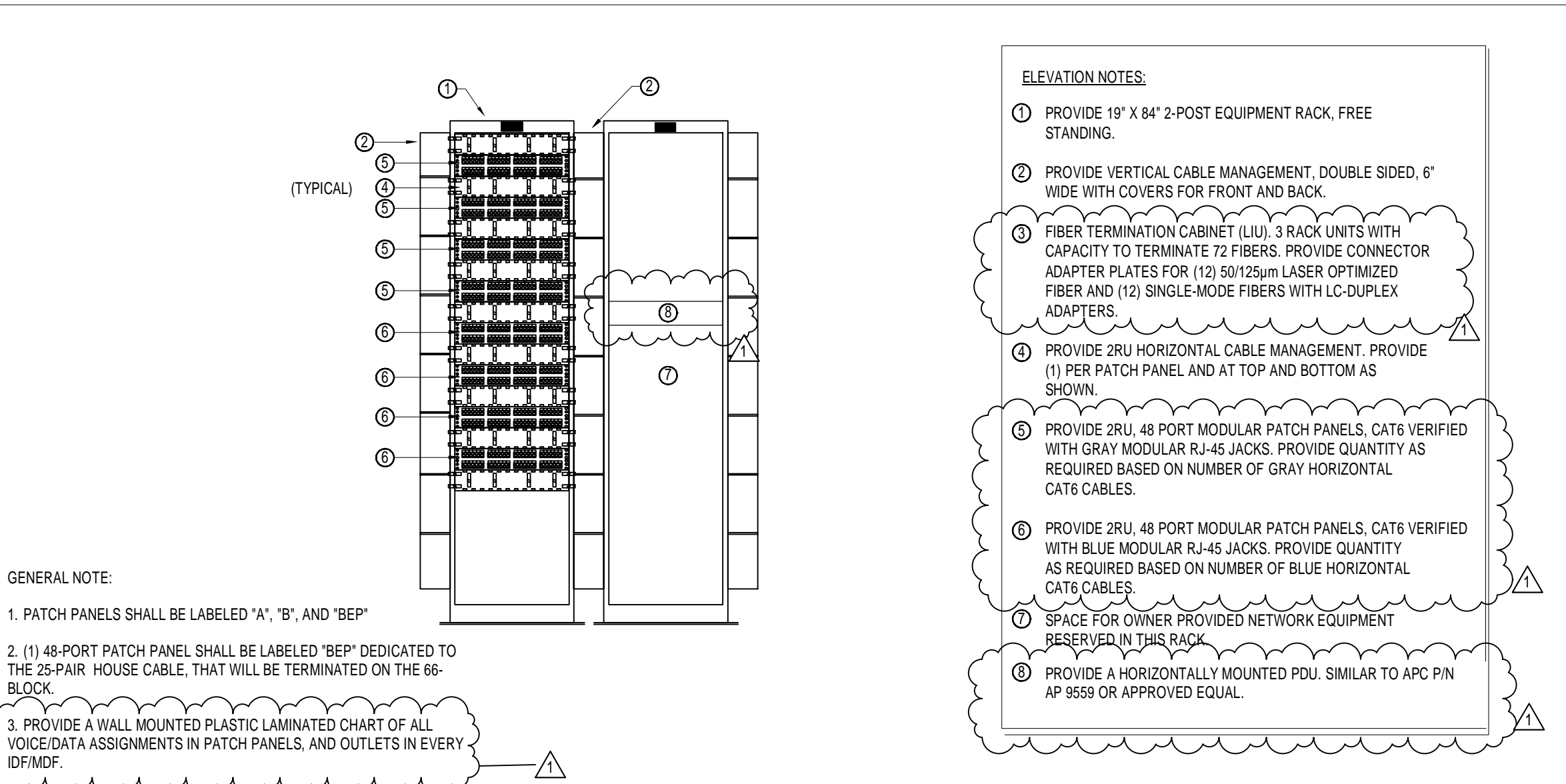
**T6.1**



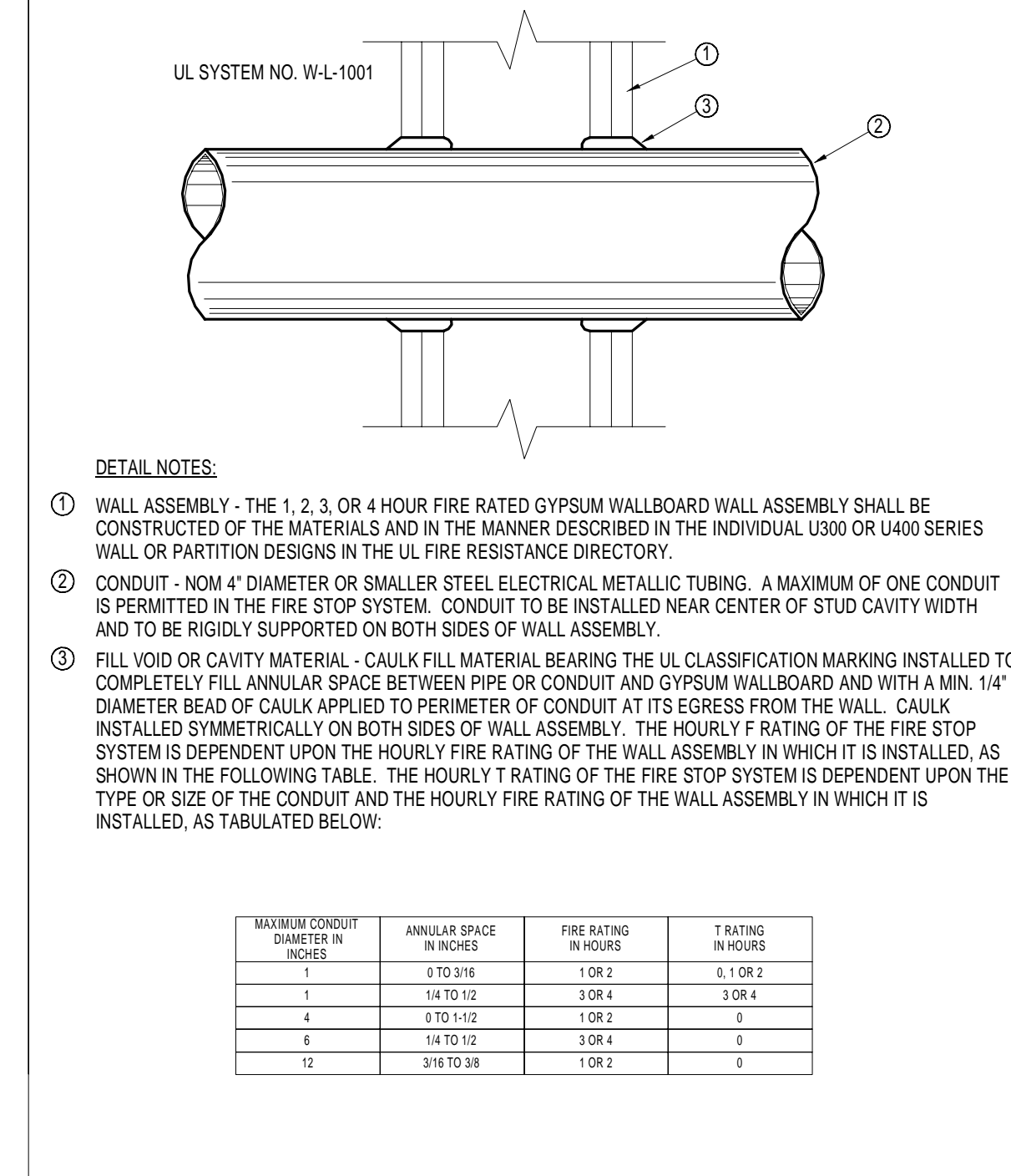
**GROUND BUS BAR (TYPICAL FOR ALL IDF'S AND MDF'S)**  
No Scale



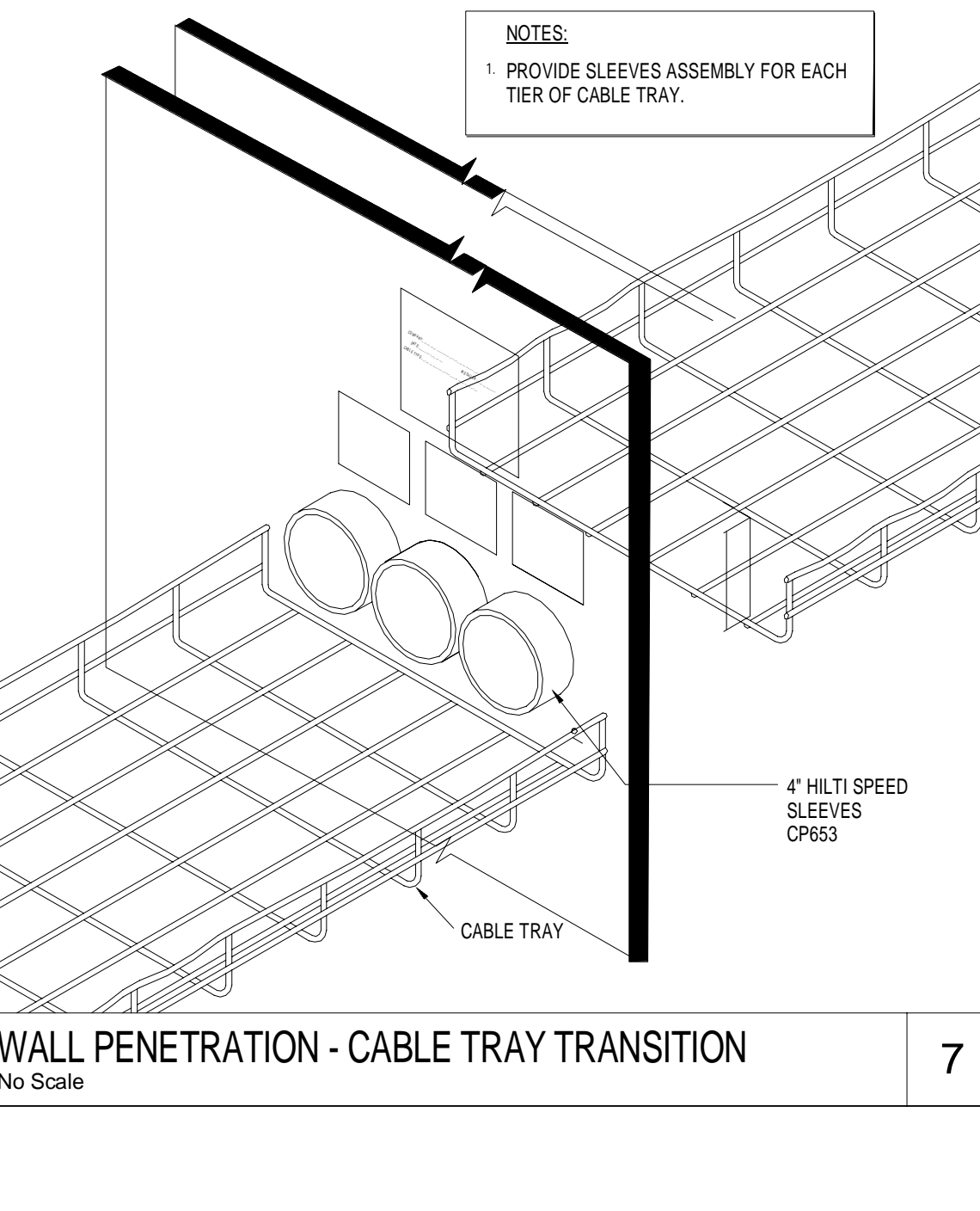
**GROUND BAR 2-HOLE LUG TERMINATION**  
No Scale



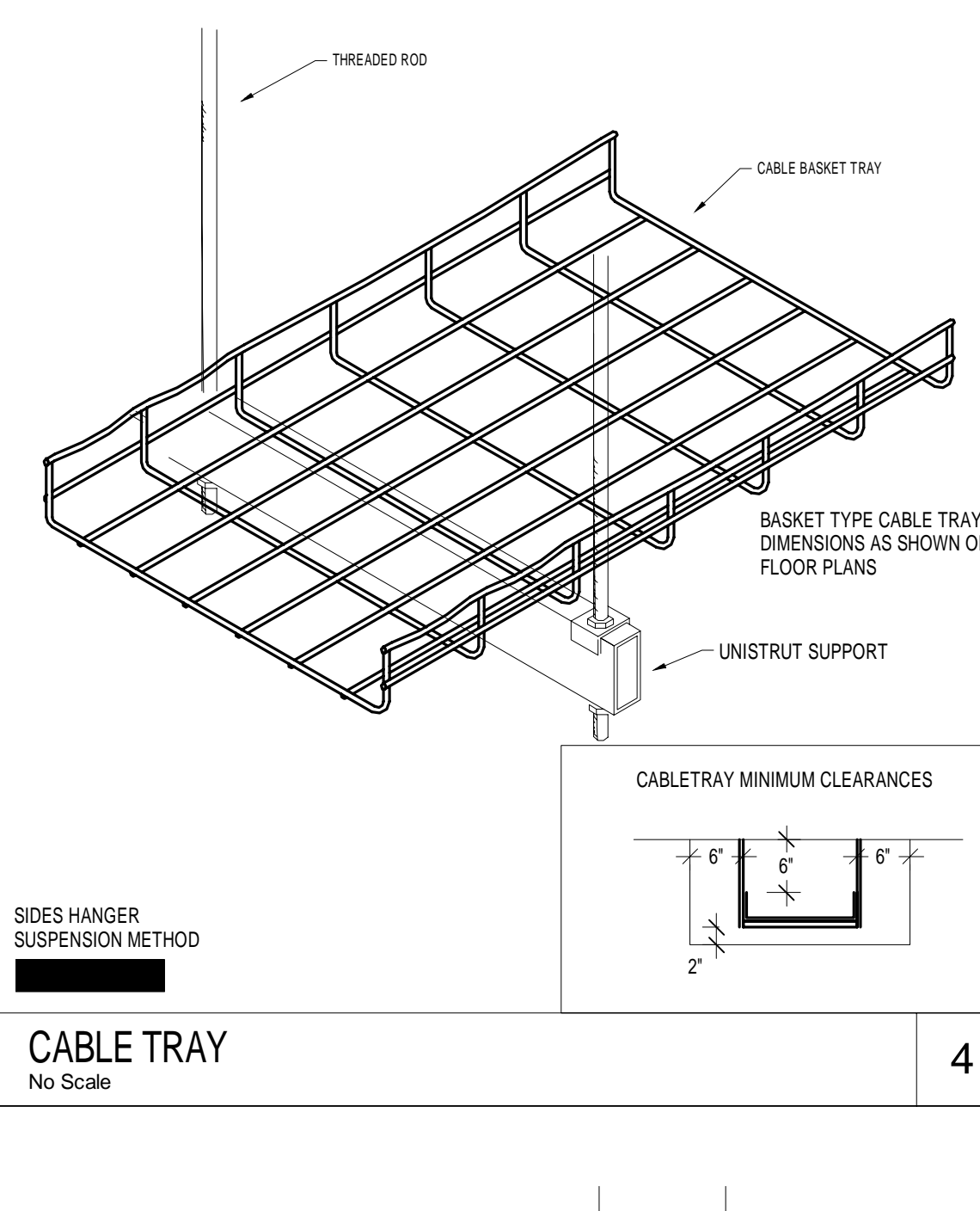
**TYPICAL TELECOMMUNICATIONS EQUIPMENT RACK ELEVATION IN THE IDF**  
No Scale



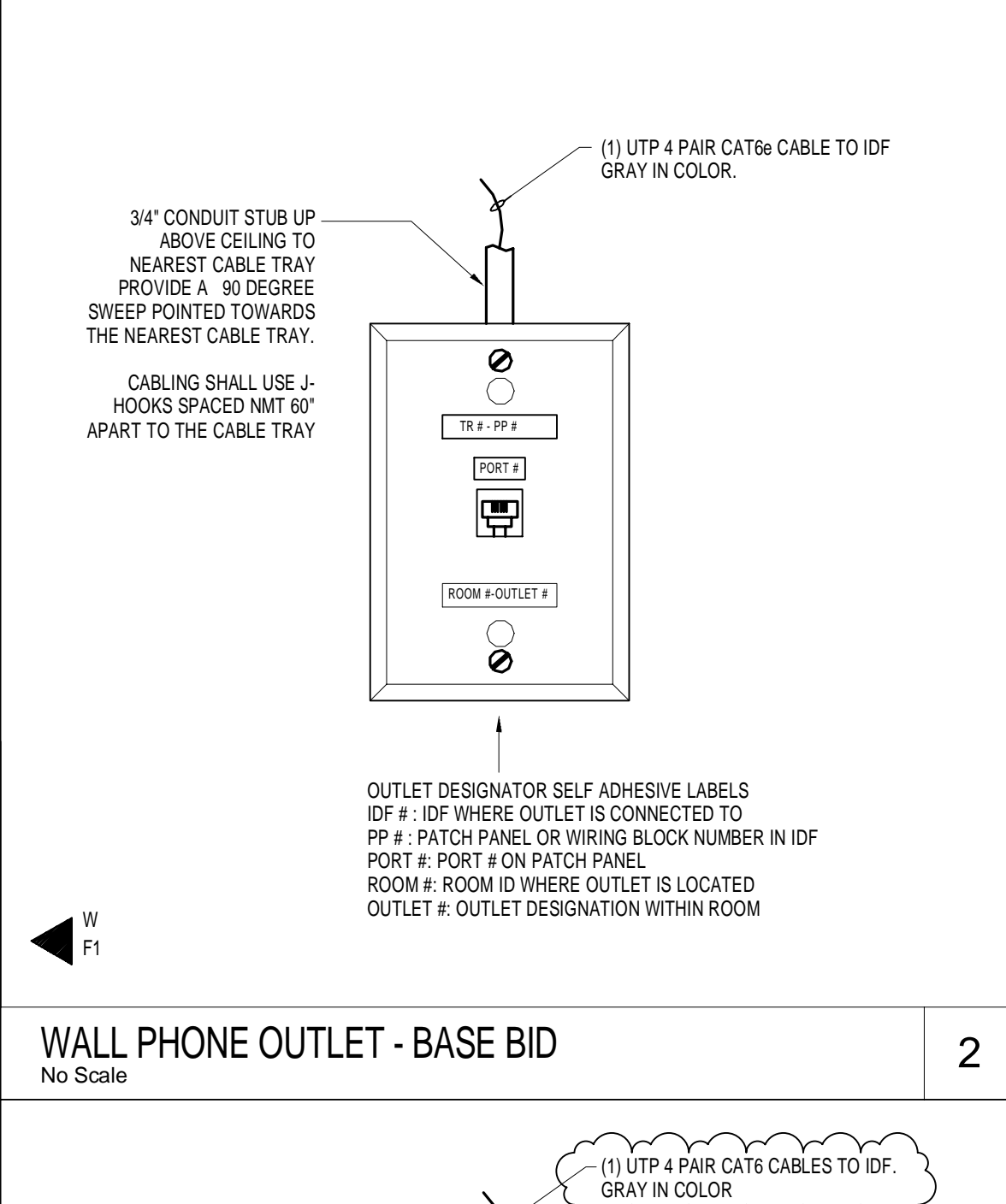
**CONDUIT PENETRATION OF FIRE WALL**  
No Scale



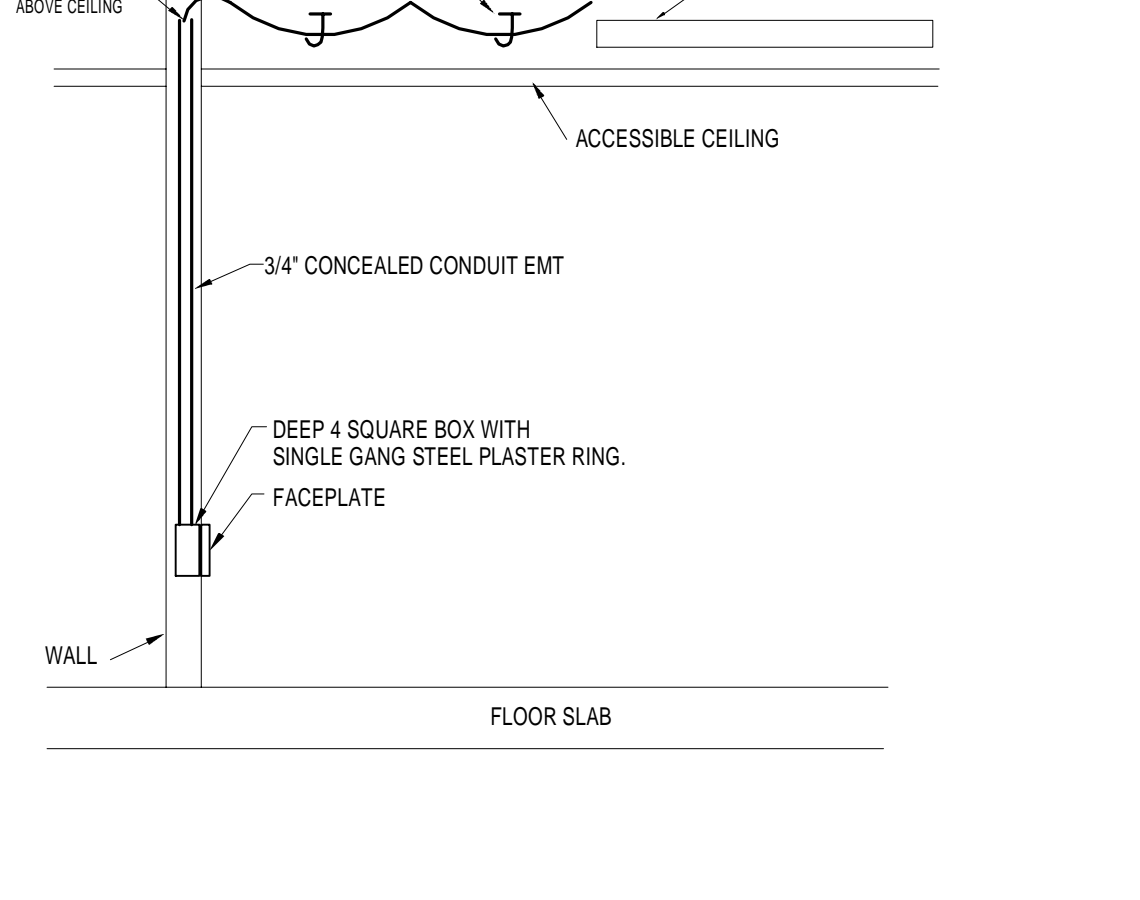
**WALL PENETRATION - CABLE TRAY TRANSITION**  
No Scale



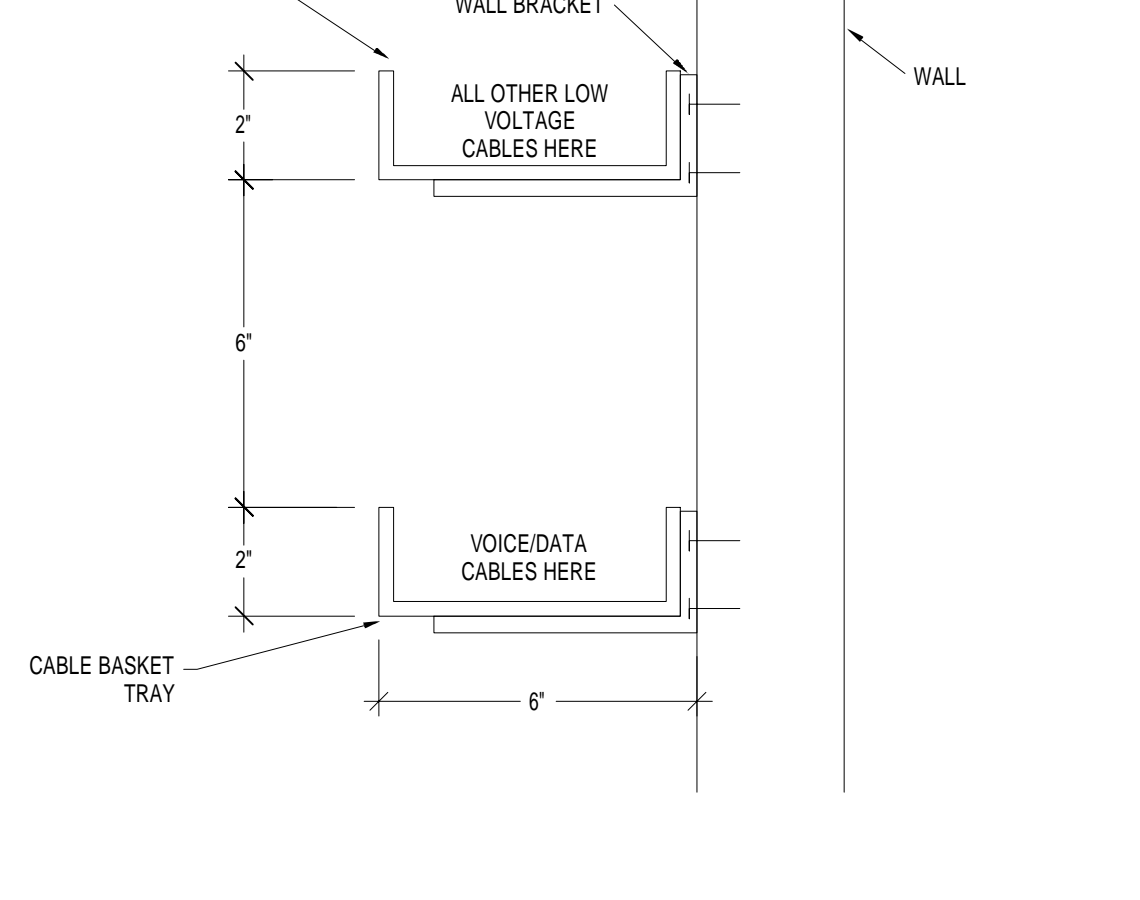
**CABLE TRAY**  
No Scale



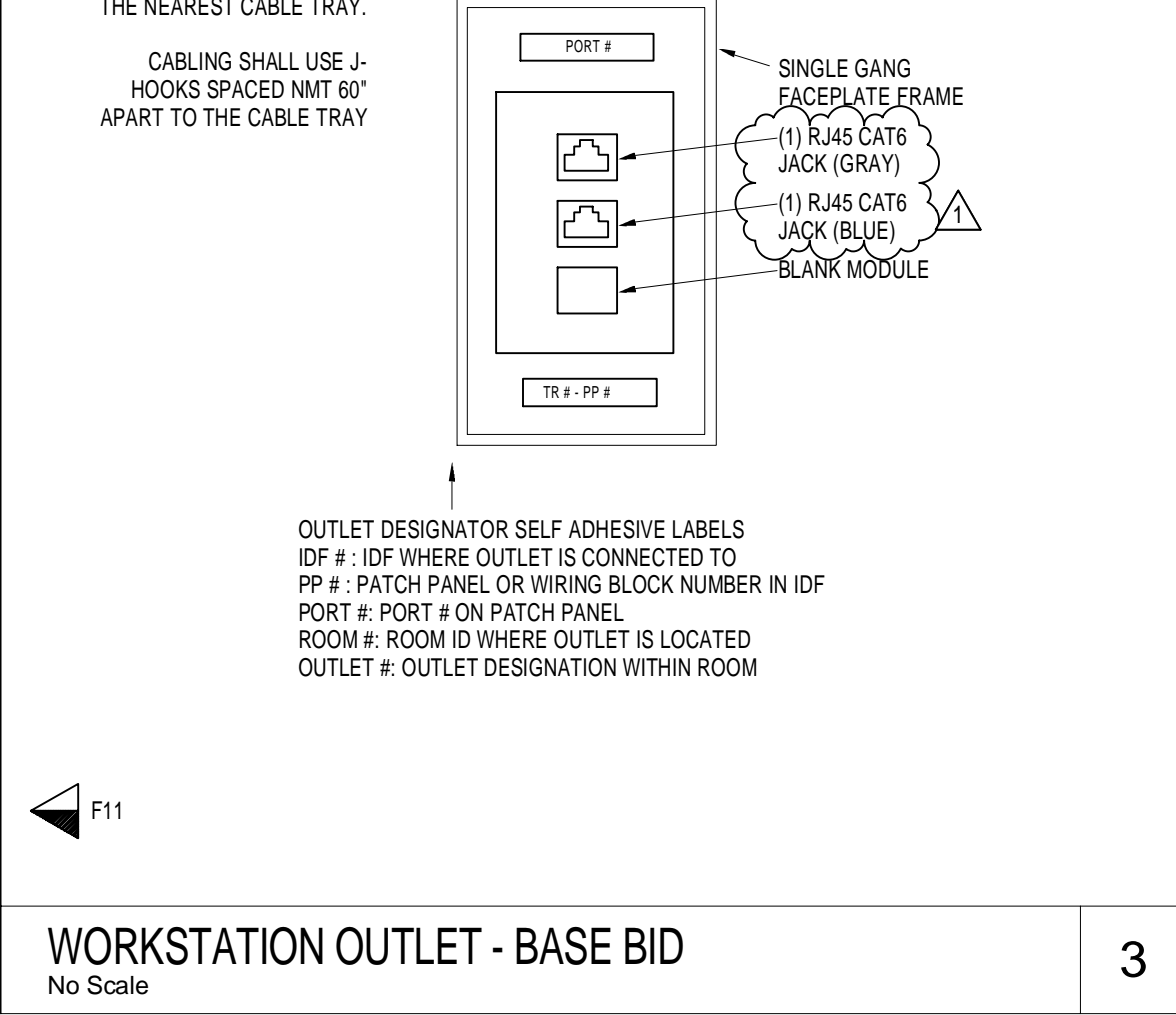
**WALL PHONE OUTLET - BASE BID**  
No Scale



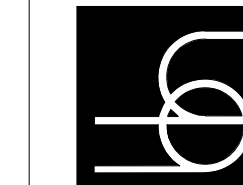
**TYPICAL FLUSH OUTLET MOUNTING**  
No Scale



**BASKET TYPE CABLE TRAY (WIRE MESH)**  
No Scale



**WORKSTATION OUTLET - BASE BID**  
No Scale



REVISIONS	
1	7-20-16 ADDENDUM #006

**TECHNOLOGY DETAILS**

DATE	JUNE 13, 2016
D.B.	BJJ
C.B.	RDF
JOB NO.	09005

100% BID FINAL

T6.2

LAMINATED ID TAG WITH 3/16" HIGH BLACK LETTERS ON WHITE BACKGROUND. (BICO) (BIC) LUGGAGE TAG WITH LOOP. SECURE TAG WITH HOOK AND LOOP MATERIAL.

ALL LABELING SHALL BE MACHINE GENERATED, AND INSTALLED UNDER FACTORY PLASTIC COVER.

LAMINATED ID TAG WITH 3/16" HIGH BLACK LETTERS ON WHITE BACKGROUND. (BICO) (BIC) LUGGAGE TAG WITH LOOP. SECURE TAG WITH HOOK AND LOOP MATERIAL.

**TYPICAL FIBER OPTIC CABLE TAG DETAIL**  
No Scale

**7**

**TYPICAL PATCH PANEL LABEL DETAIL**  
No Scale

**4**

**TYPICAL CABLE I.D. LABEL DETAIL**  
No Scale

**1**

EIA T568A  
MODULAR JACK WIRING (FRONT VIEW)

MIN. 3" CLEARANCE

FINISHED FLOOR

FRONT VIEW

SIDE VIEW

**GENERAL NOTES:**

- COORDINATIONS OF THE SERVICE ENTRANCE FACILITY WITH TELCO UTILITY SHALL BE THE RESPONSIBILITY OF THE GENERAL CONTRACTOR.

**NOTES:**

- 3/4" PLYWOOD BACKBOARD.
- PROVIDE COPPER BUSBAR AND GROUNDING.
- INSTALL ORANGE COVERS OVER DEMARC TERMINALS.
- 4" CONDUIT FOR TELCO SERVICE ENTRANCE.
- TELCO UTILITY LINES.
- PRIMARY PROTECTION FIELD BLOCK. PROVIDE SERVICE ENTRANCE PROTECTION BLOCK WITH 5-PIN SOLID STATE 300V NOMINAL CLAMPING PROTECTORS & 350mA SNEAK CURRENT PROTECTION.

**8**

**MODULAR JACK WIRING DETAIL**

**5**

**RACK POWER DETAIL**

**2**

**TELECOMMUNICATIONS PRIMARY PROTECTION**  
No Scale

ENGRAVED PLASTIC TAG WITH 1/4" HIGH WHITE LETTERS ON BLACK BACKGROUND. TAG SHALL HAVE ALL EDGES BEVELED AND SMOOTH. SECURE TAG WITH PERMANENT DOUBLE-SIDED TAG TAPE OFFSET FROM CENTER ON BLANK PLATE AS INDICATED.

TBB LENGTH LINEAR (W/TS)	TBB SIZE AWG
LESS THAN 4 (13)	6
4-8 (14-20)	4
8-8 (21-26)	3
8-10 (27-33)	2
10-13 (34-41)	1
13-16 (42-52)	10
16-20 (53-66)	20
GREATER THAN 20 (66)	30

BONDING BY ELECTRICAL CONTRACTOR

TO ELECTRICAL PANEL GROUND BUS BY ELECTRICAL CONTRACTOR

1ST FLOOR

NEW IP

**ABBREVIATION SCHEDULE**

BC BONDING CONDUCTOR FOR TELECOMMUNICATIONS

TR TELECOMMUNICATIONS ROOM

TEF TELECOMMUNICATIONS ENTRANCE FACILITY

TER TELECOMMUNICATIONS EQUIPMENT ROOM

TBB TELECOMMUNICATIONS BONDING BACKBONE

BC BONDING CONDUCTOR SHALL BE #6 AWG UNLESS OTHERWISE NOTED BY COMMUNICATIONS CABLING CONTRACTOR.

TGB TELECOMMUNICATIONS GROUNDING BUSBAR

TMGB TELECOMMUNICATIONS MAN GROUNDING BUSBAR

□ RACK CONNECTION

□ ELECTRICAL PANELBOARD SERVING EQUIPMENT IN THIS COMM. ROOM

• CABLE BOND CONNECTIONS MADE WITH LISTED BONDING CONNECTION FASTENERS.

— CABLE TRAY CONNECTION

— METAL FRAME OF BUILDING CONNECTION

□ CONDUIT/SLEEVES

**9**

**TYPICAL RACK LABEL DETAIL**  
No Scale

**6**

**GROUNDING AND BONDING DIAGRAM**  
No Scale

**3**

**GROUNDING DETAIL (TYPICAL ENTRANCE FACILITY)**  
No Scale