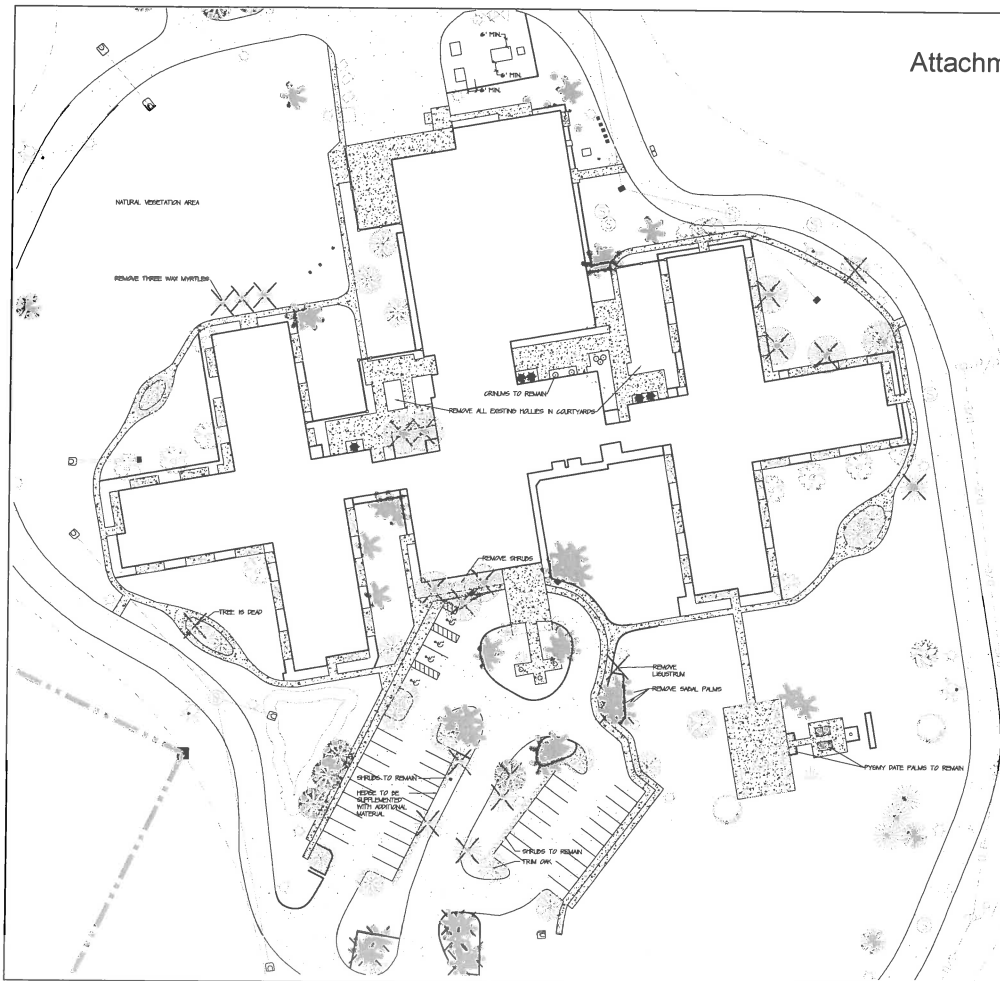


Attachment "A"

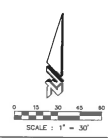


SITE NOTES

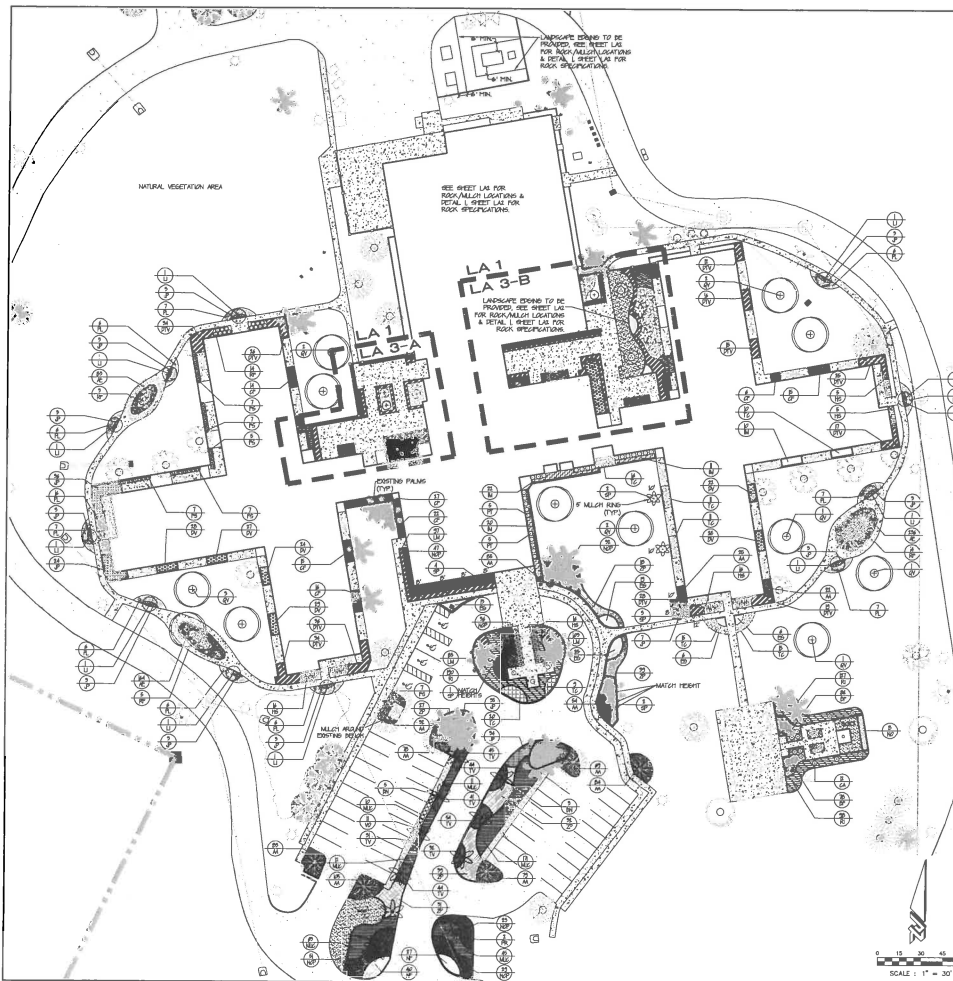
1. DEMO SHALL REMAIN UNLESS DEMARKED FOR REMOVAL.
2. VERIFY THE LOCATION AND DIMENSIONS OF ITEMS TO BE REMOVED PRIOR TO COMMENCEMENT OF THE WORK.
3. DEMO EXISTING EXTERIOR WALLS AND NOT DEMO ON THE EXTERIOR WALL BE BROUGHT TO THE ATTENTION OF THE LANDSCAPE ARCHITECT. CONTRACTOR TO CONTACT NUMBER ONE CALL OF PLUMBER RE: SEWER AND DRAINAGE CLEAN.
4. REMOVE EXISTING MATERIALS AS SHOWN ON THE PLANS REMAIN SALVAGED MATERIALS AS NOTED WITH CARE AND BEFORE ON SITE. CLEAN ALL SEWER AND CONSTRUCTION MATERIAL FROM ALLWAYS. STUMP REMOVAL AS SPECIFIED BY LANDSCAPE ARCHITECT.
5. REMOVE DEMARKED MATERIALS FROM SITE. DISPOSAL BY BURIED AND/OR BURNED IS PROHIBITED.
6. CONTACT THE LOCAL UTILITIES COMPANY FOR UTILITY LOCATION AND IDENTIFICATION PRIOR TO DEMOLITION.
7. THE LOCATION OF EXISTING UTILITIES AS SHOWN ON THE PLANS MAY VARY IN DEPTH TO VARY. EXISTING EXTERIOR UTILITIES UTILITIES NOT SHOWN ON THE DRAWINGS MAY BE LOCATED IN THE FIELD OF THE DEMO. DEMO AND CALL ANY UNEXPECTED TO THE ATTENTION OF THE LANDSCAPE ARCHITECT OR SITE REPRESENTATIVE BEFORE BEING WORK.
8. ALL ITEMS ARE TO BE FILLED IN TO AGREE WITH APPROPRIATE ALL MATERIAL FROM ALL WOOD CLUMP, MEDIA, STONES, SAND, ETC. IN DIRECTLY CLUMPING PALM, VARIOUS PLANTS, NON WOODS, OR OTHER UNDESIRED PLANTS, TREES, OR MATERIAL WHICH MAY BE HARMFUL FOR GROWTH.

LEGEND

- X EXISTING TREE TO BE REMOVED
- TREE
- TREE STUMP
- GRASS
- GRASS
- SPARSE PLANT
- SPARSE PLANT
- PALM
- PALM
- PALM
- PALM
- PALM
- PALM
- PALM
- PALM
- PALM
- PALM
- PALM
- PALM
- PALM
- PALM
- PALM
- PALM



		VETERAN'S NURSING HOME FINAL ENGINEERING PLANS DEMOLITION PLAN	
		CITY OF DAYTON OHIO	
PROJECT NO. 15-020 DATE: 11/20/15 DRAWN BY: JACOB CHECKED BY: JACOB PROJECT NO. 15-020	SHEET NO. 35 TOTAL SHEETS: 11	SCALE: 1" = 30' SHEET NO. 35 TOTAL SHEETS: 11	PROJECT NO. 15-020 DATE: 11/20/15 DRAWN BY: JACOB CHECKED BY: JACOB PROJECT NO. 15-020



LANDSCAPE SPECIFICATIONS

- 1. **GENERAL**: ALL PLANT MATERIAL SHALL BE SHOWN PLANTED IN 100% QUANTITY AS SHOWN ON THE LANDSCAPE PLAN. QUANTITY OF MATERIAL SHALL BE SUBMITTED FOR APPROVAL BY THE ARCHITECT PRIOR TO CONSTRUCTION.
- 2. **GENERAL**: ALL PLANTING SHALL BE DONE IN ACCORDANCE WITH THE LANDSCAPE PLAN. THE CONTRACTOR SHALL BE RESPONSIBLE FOR THE PROTECTION OF ALL EXISTING UTILITIES AND STRUCTURES.
- 3. **GENERAL**: ALL PLANTING SHALL BE DONE IN ACCORDANCE WITH THE LANDSCAPE PLAN. THE CONTRACTOR SHALL BE RESPONSIBLE FOR THE PROTECTION OF ALL EXISTING UTILITIES AND STRUCTURES.
- 4. **GENERAL**: ALL PLANTING SHALL BE DONE IN ACCORDANCE WITH THE LANDSCAPE PLAN. THE CONTRACTOR SHALL BE RESPONSIBLE FOR THE PROTECTION OF ALL EXISTING UTILITIES AND STRUCTURES.
- 5. **GENERAL**: ALL PLANTING SHALL BE DONE IN ACCORDANCE WITH THE LANDSCAPE PLAN. THE CONTRACTOR SHALL BE RESPONSIBLE FOR THE PROTECTION OF ALL EXISTING UTILITIES AND STRUCTURES.
- 6. **GENERAL**: ALL PLANTING SHALL BE DONE IN ACCORDANCE WITH THE LANDSCAPE PLAN. THE CONTRACTOR SHALL BE RESPONSIBLE FOR THE PROTECTION OF ALL EXISTING UTILITIES AND STRUCTURES.
- 7. **GENERAL**: ALL PLANTING SHALL BE DONE IN ACCORDANCE WITH THE LANDSCAPE PLAN. THE CONTRACTOR SHALL BE RESPONSIBLE FOR THE PROTECTION OF ALL EXISTING UTILITIES AND STRUCTURES.
- 8. **GENERAL**: ALL PLANTING SHALL BE DONE IN ACCORDANCE WITH THE LANDSCAPE PLAN. THE CONTRACTOR SHALL BE RESPONSIBLE FOR THE PROTECTION OF ALL EXISTING UTILITIES AND STRUCTURES.
- 9. **GENERAL**: ALL PLANTING SHALL BE DONE IN ACCORDANCE WITH THE LANDSCAPE PLAN. THE CONTRACTOR SHALL BE RESPONSIBLE FOR THE PROTECTION OF ALL EXISTING UTILITIES AND STRUCTURES.
- 10. **GENERAL**: ALL PLANTING SHALL BE DONE IN ACCORDANCE WITH THE LANDSCAPE PLAN. THE CONTRACTOR SHALL BE RESPONSIBLE FOR THE PROTECTION OF ALL EXISTING UTILITIES AND STRUCTURES.

IRRIGATION NOTES

1. ANDERSON SYSTEMS THE CONTROLLED IRRIGATION SYSTEM TO PROVIDE OVERFLOW OF ALL NEW PLANTING.

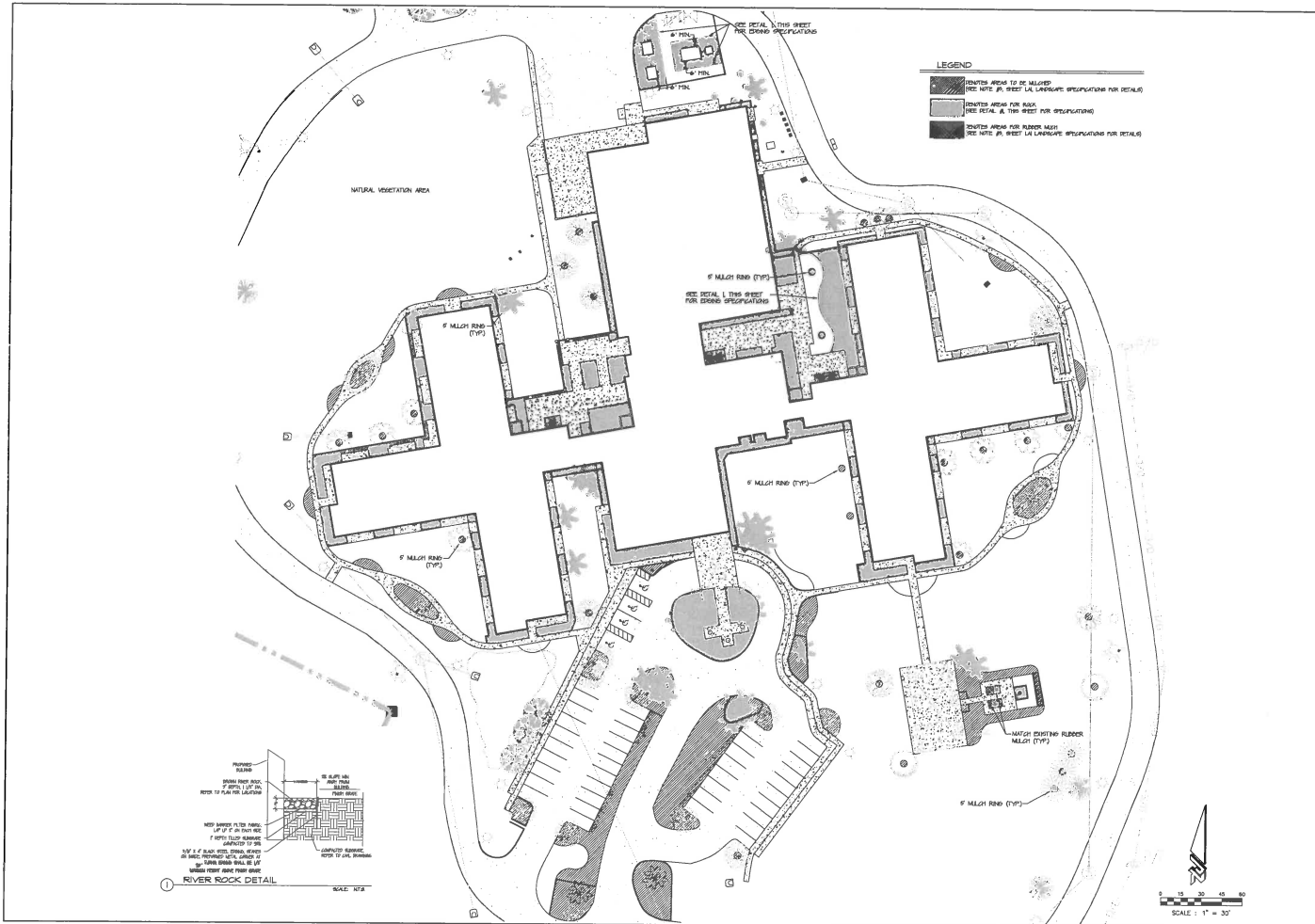
PLANT LIST

SYMBOL	CY	SPECIES	COMMON NAME	QUANTITY
TR15	1	TRIALUM	TRIALUM	1
TR16	1	TRIALUM	TRIALUM	1
TR17	1	TRIALUM	TRIALUM	1
TR18	1	TRIALUM	TRIALUM	1
TR19	1	TRIALUM	TRIALUM	1
TR20	1	TRIALUM	TRIALUM	1
TR21	1	TRIALUM	TRIALUM	1
TR22	1	TRIALUM	TRIALUM	1
TR23	1	TRIALUM	TRIALUM	1
TR24	1	TRIALUM	TRIALUM	1
TR25	1	TRIALUM	TRIALUM	1
TR26	1	TRIALUM	TRIALUM	1
TR27	1	TRIALUM	TRIALUM	1
TR28	1	TRIALUM	TRIALUM	1
TR29	1	TRIALUM	TRIALUM	1
TR30	1	TRIALUM	TRIALUM	1
TR31	1	TRIALUM	TRIALUM	1
TR32	1	TRIALUM	TRIALUM	1
TR33	1	TRIALUM	TRIALUM	1
TR34	1	TRIALUM	TRIALUM	1
TR35	1	TRIALUM	TRIALUM	1
TR36	1	TRIALUM	TRIALUM	1
TR37	1	TRIALUM	TRIALUM	1
TR38	1	TRIALUM	TRIALUM	1
TR39	1	TRIALUM	TRIALUM	1
TR40	1	TRIALUM	TRIALUM	1
TR41	1	TRIALUM	TRIALUM	1
TR42	1	TRIALUM	TRIALUM	1
TR43	1	TRIALUM	TRIALUM	1
TR44	1	TRIALUM	TRIALUM	1
TR45	1	TRIALUM	TRIALUM	1
TR46	1	TRIALUM	TRIALUM	1
TR47	1	TRIALUM	TRIALUM	1
TR48	1	TRIALUM	TRIALUM	1
TR49	1	TRIALUM	TRIALUM	1
TR50	1	TRIALUM	TRIALUM	1
TR51	1	TRIALUM	TRIALUM	1
TR52	1	TRIALUM	TRIALUM	1
TR53	1	TRIALUM	TRIALUM	1
TR54	1	TRIALUM	TRIALUM	1
TR55	1	TRIALUM	TRIALUM	1
TR56	1	TRIALUM	TRIALUM	1
TR57	1	TRIALUM	TRIALUM	1
TR58	1	TRIALUM	TRIALUM	1
TR59	1	TRIALUM	TRIALUM	1
TR60	1	TRIALUM	TRIALUM	1

ZEV COHEN ARCHITECTS & ENGINEERS
 1000 W. JEFFERSON AVENUE
 SUITE 1000
 DENVER, CO 80202
 (303) 733-8800
 WWW.ZEVARCHITECTS.COM

VETERAN'S NURSING HOME
 FINAL ENGINEERING PLANS
 LANDSCAPE PLAN & DETAILS

36
 SHEET NO. 01
 TOTAL SHEETS 03





ZEV COHEN ENGINEERING
 PROFESSIONAL ENGINEERING FIRM
 10000 W. BAYVIEW BLVD., SUITE 100
 MIAMI, FL 33147
 TEL: 305.444.1111
 FAX: 305.444.1112
 WWW.ZEVCOHEN.COM

VETERAN'S NURSING HOME
FINAL ENGINEERING PLANS
ROCK & MULCH LAYOUT PLAN

CITY OF DUNTHORPE, FLORIDA

37

SCALE: 1" = 30'
 SHEET: LA2 OF 3

