

**SPECIFIC NOTES:**

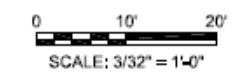
- ① EXISTING PANEL TO REMAIN. CONFIRM EXISTING CONDITION IS ACCEPTABLE AND RATINGS MATCH RECORD DRAWINGS (TYP.).
- ② PROVIDE NEW PANEL TO REPLACE EXISTING. SEE GENERAL NOTE 2 ON SHEET E3.1 AND THE SINGLE LINE DIAGRAM AND SCHEDULES FOR MORE INFORMATION (TYP.).
- ③ PROVIDE NEW PANEL FOR HANGAR MEZZANINE MOUNTED CORD REEL RECEPTACLES. SEE SINGLE LINE DIAGRAM AND PANEL SCHEDULES FOR MORE INFORMATION (TYP. OF 2 THIS SHEET).

- ④ PROVIDE NEW GFCI PROTECTED 100' HEAVY DUTY INDUSTRIAL CORD REEL WITH CORROSION RESISTANT DUPLEX RECEPTACLE. THE CORD REEL SHALL BE MOUNTED TO THE MEZZANINE IN HANGAR. PROVIDE HOT DIP GALVANIZED UNISTRUT CHANNELS, AS REQUIRED. BASIS OF DESIGN IS HANNANY MODEL NSCR700 SERIES WITH 2#12 AWG CONDUCTORS AND #12 AWG GROUND. MATCH EXISTING TO REMAIN HANNANY CORD REELS LOCATED AT COLUMNS 7 AND 11. BASIS OF DESIGN FOR RECEPTACLE IS HUBBELL HBL53CM62, OR APPROVED EQUAL. CONFIRM EXACT LOCATION AND ELEVATION WITH OWNER (TYP.).
- ⑤ PROVIDE THREE ADDITIONAL DEDICATED RECEPTACLES AND BRANCH CIRCUITS FOR RM 155. PROVIDE 3 CIRCUITS EACH WITH 2 #10 AWG CONDUCTORS AND #10 AWG GROUND IN 1/2" CONDUIT. USE EXISTING SPARE 20A, 120V, SINGLE POLE CIRCUIT BREAKERS. CONFIRM LOCATION WITH OWNER.

- ⑥ RELOCATE EXISTING TRANSFORMER T16 OUT OF THE REQUIRED NEC WORKING SPACE FOR SWITCHBOARD 'MSB-1' IF REQUIRED BY AHJ. NOTE THAT WORKING SPACE FOR SWITCHBOARD 'MSB-1' IS EIGHT FEET PER NEC 110.26 (c)(2)(b).



**FIRST FLOOR POWER PLAN - EAST**  
SCALE: 3/32" = 1'



RELEASED FOR CONSTRUCTION



DAVID W. SIMES  
FL. PE. #51249  
**S & R**  
ENGINEERING  
Sipes & Roach, LLC  
Consulting Engineers  
303 Harley Road, Suite 100  
Jacksonville, Florida 32217  
FL. Lic. of Arch. 5107  
FL. Lic. of Eng. 5203  
Tel: (904) 263-3031  
Fax: (904) 263-5275

FLORIDA ARMY NATIONAL GUARD  
CONSTRUCTION AND FACILITY MANAGEMENT OFFICE  
ARMY AVIATION SUPPORT FACILITY #1  
BLDG 860, CECIL FIELD  
ELECTRICAL DISTRIBUTION UPGRADES  
FIRST FLOOR POWER PLAN - EAST

DATE	05/06/16
PROJECT NO.	12218010
DRAWING NO.	
SHEET: 5 OF 24	
<b>E3.2</b>	