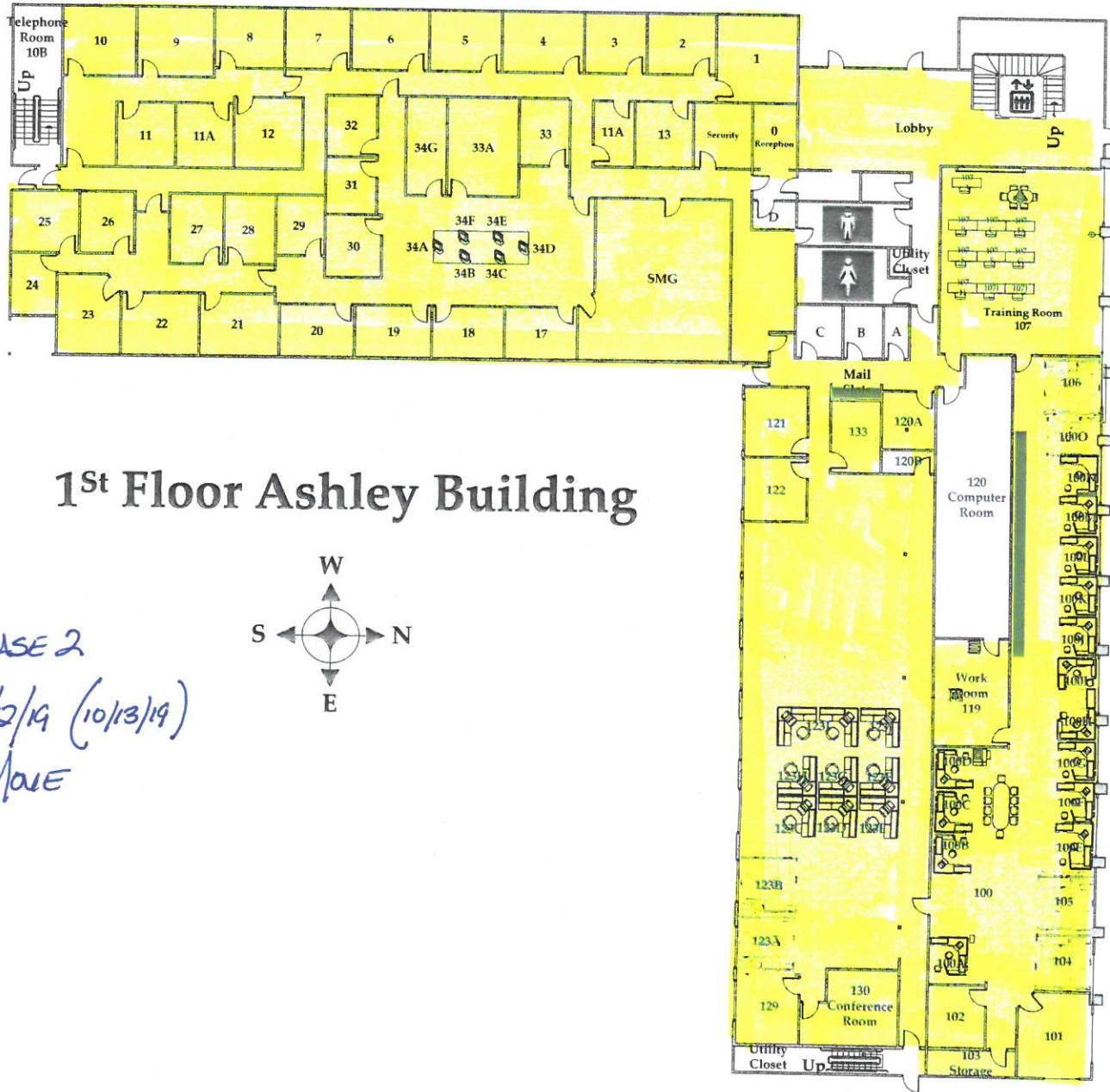
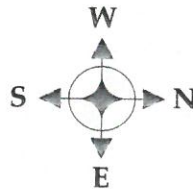


EXHIBIT 2
PHASE II

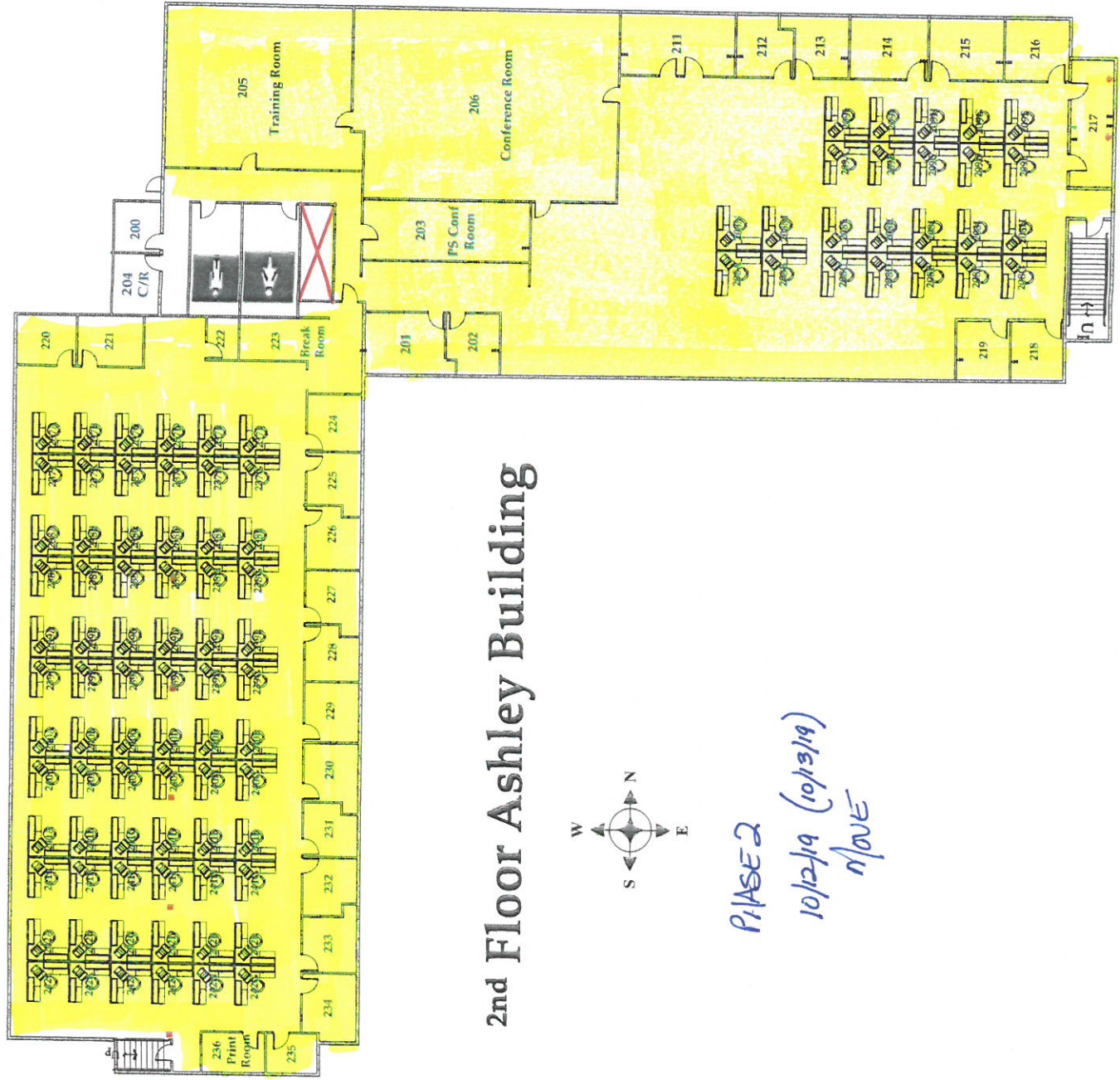


1st Floor Ashley Building

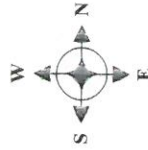


PHASE 2
10/12/19 (10/13/19)
MOVE

EXHIBIT 2
PHASE II

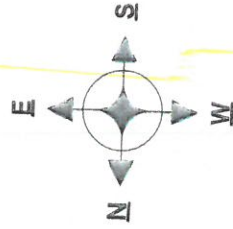


2nd Floor Ashley Building



PHASE 2
10/12/19 (10/13/19)
MOVE

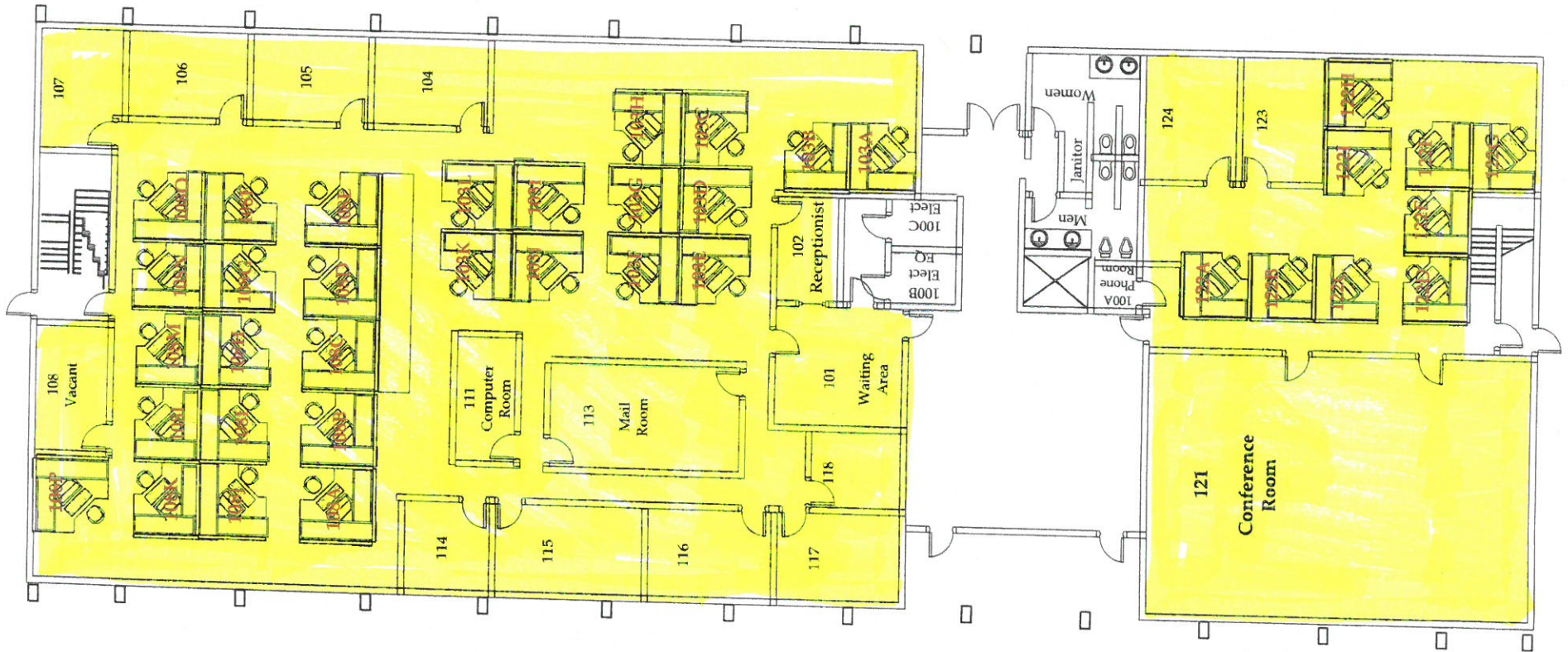
1st Floor Turner Bldg
v13 -- Central Area 2



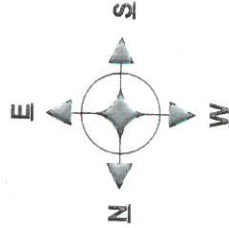
PHASE 2

10/2/19 (10/13/19)

MOVE



Turner Building 2nd Floor



PHASE 2
10/12/19 (10/13/19)
Moves

