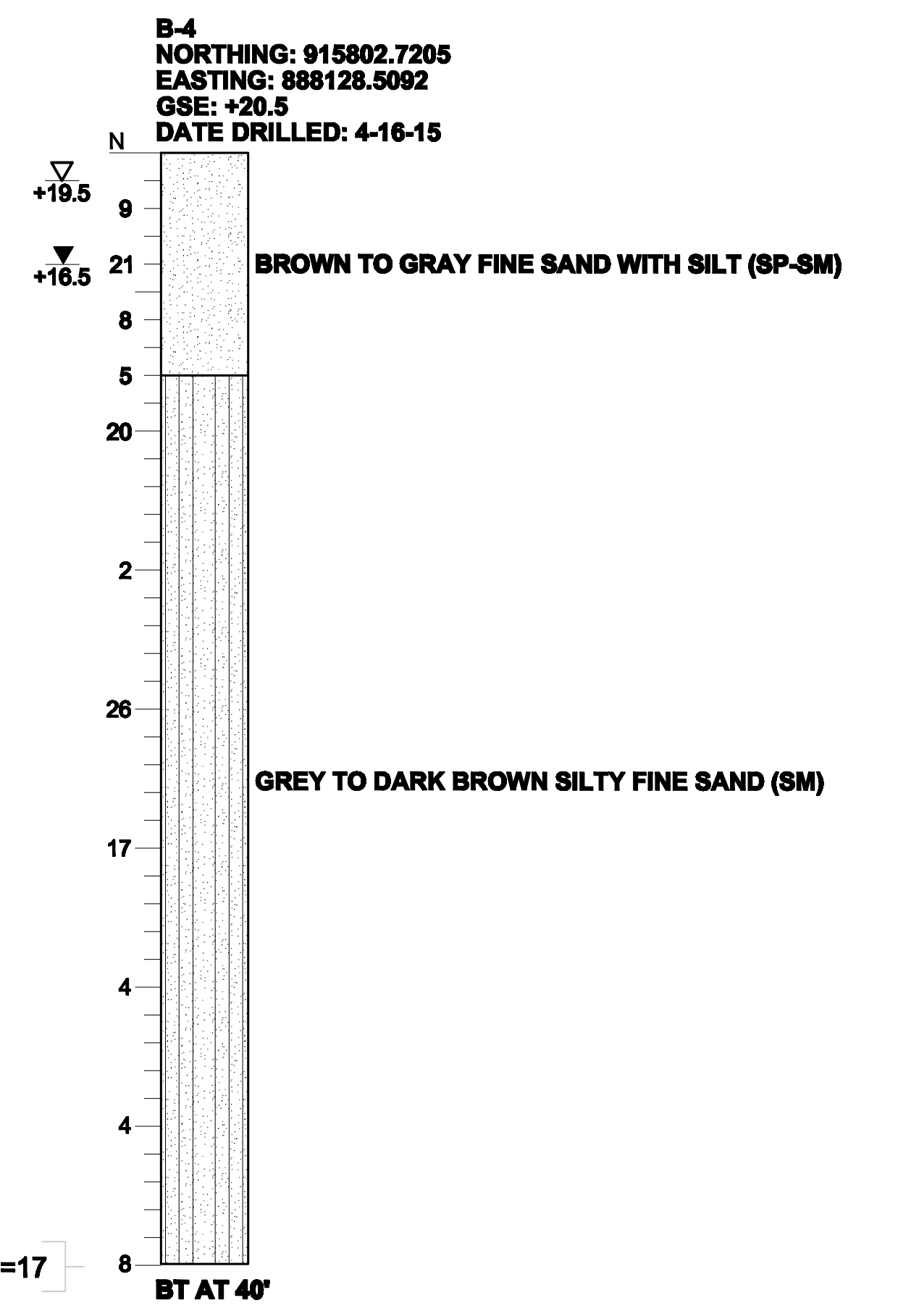
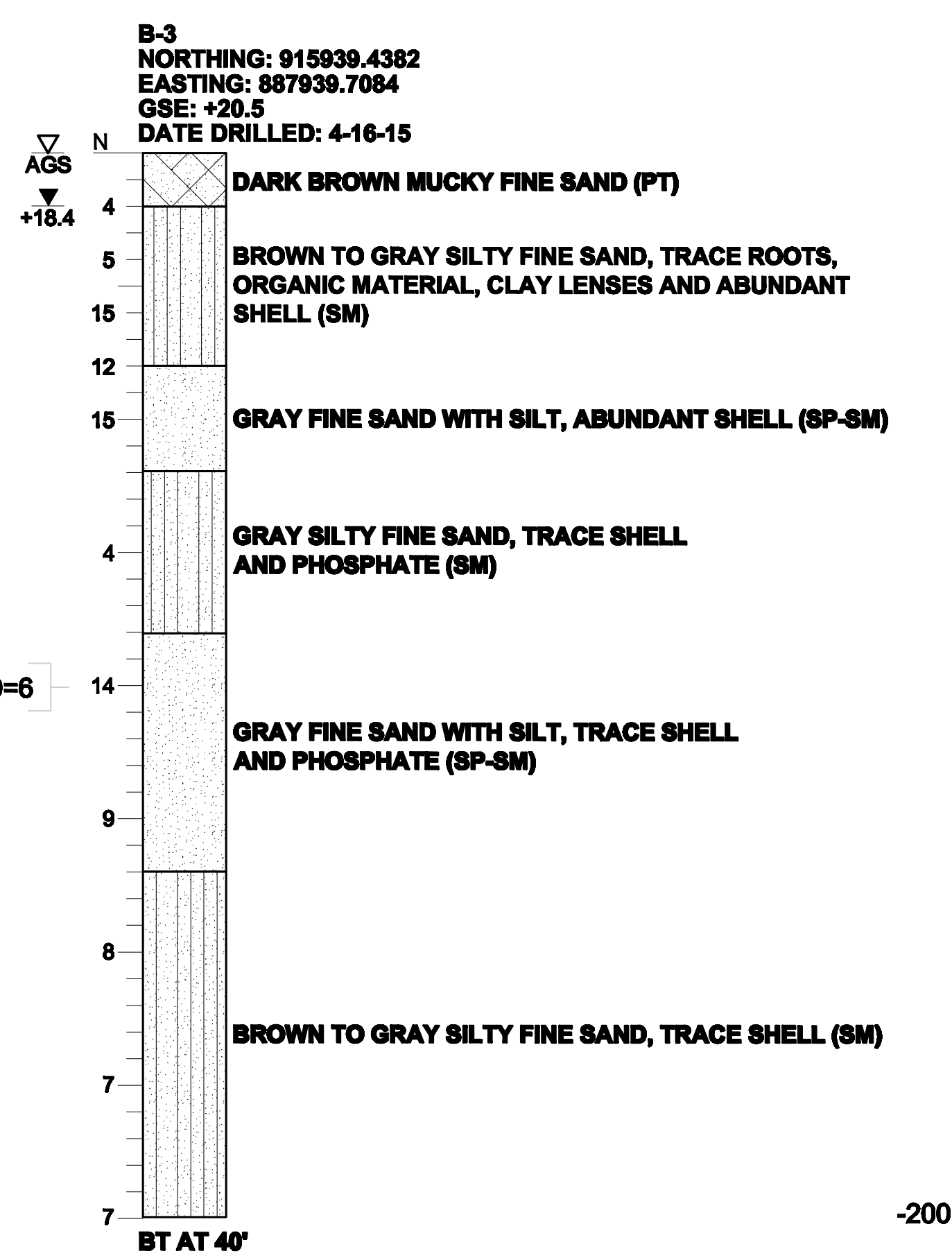
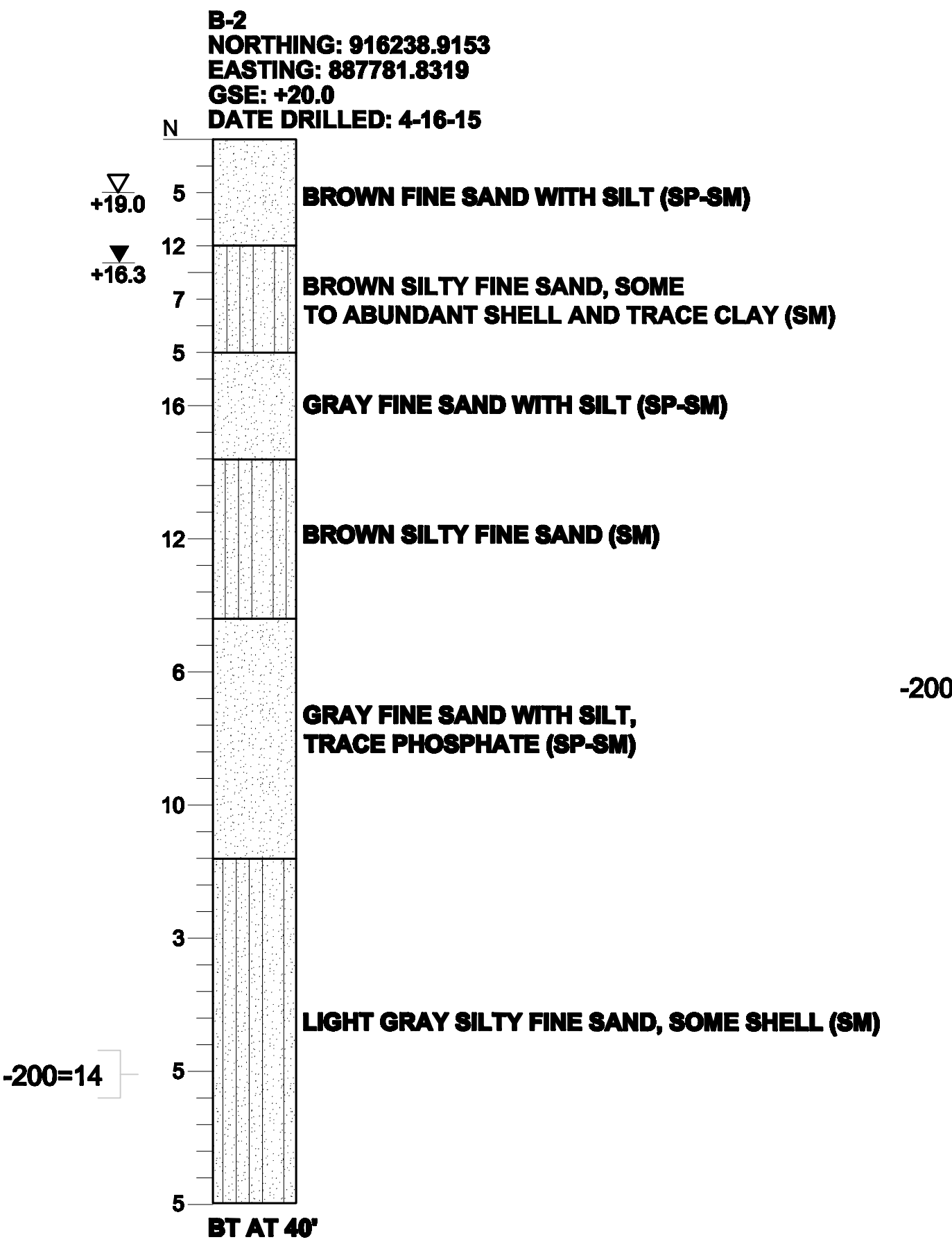
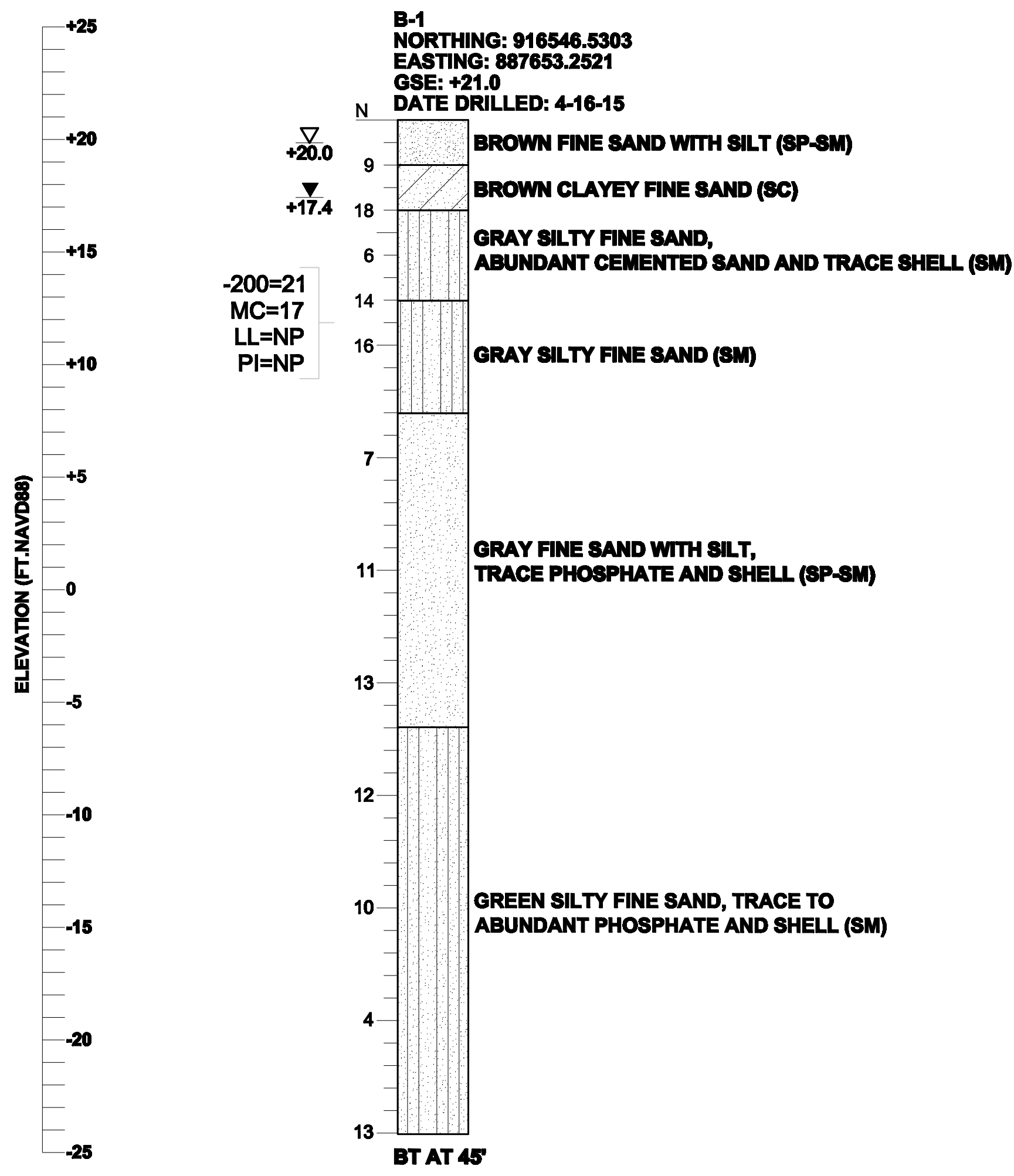
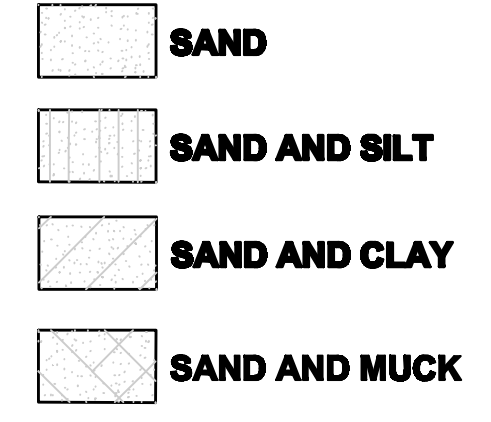


THIS DRAWING IS THE INSTRUMENT OF SERVICE AND PROPERTY OF C. VARGAS & ASSOCIATES, LTD. ANY USE OR REPRODUCTION WITHOUT EXPRESSED WRITTEN PERMISSION OF THIS CORPORATION IS PROHIBITED. ALL RIGHTS OF DESIGN AND INVENTION ARE EXPRESSLY RESERVED.



- LEGEND**
- GSE GROUND SURFACE ELEVATION (FT.NAVD88)
 - AGS AT THE GROUND SURFACE (FT.NAVD88)
 - N STANDARD PENETRATION RESISTANCE, BLOWS PER FOOT
 - ▽ ESTIMATED SEASONAL HIGH GROUNDWATER ELEVATION (FT.NAVD88)
 - ▽ ENCOUNTERED GROUNDWATER ELEVATION (FT.NAVD88) 24 HRS. AFTER DATE DRILLED
 - BT BORING TERMINATED AT DEPTH INDICATED
 - 200= PERCENT PASSING NO. 200 U.S. STANDARD SIEVE
 - MC= PERCENT NATURAL MOISTURE CONTENT
 - LL= LIQUID LIMIT
 - PI= PLASTICITY INDEX
 - NP= NON-PLASTIC



GENERAL NOTES

SUBSURFACE CONDITIONS SHOWN ON THE BORINGS REPRESENT THE CONDITIONS ENCOUNTERED AT THE BORING LOCATIONS. ACTUAL CONDITIONS BETWEEN THE BORINGS MAY VARY FROM THOSE SHOWN. UNIFIED SOIL CLASSIFICATIONS SHOWN ON THE BORINGS ARE BASED ON VISUAL EXAMINATION AND THE LABORATORY TESTING SHOWN.

STANDARD PENETRATION TEST BORINGS WERE PERFORMED IN ACCORDANCE WITH ASTM D-1586. STANDARD PENETRATION RESISTANCES ARE SHOWN ON THE BORINGS AT THE TEST DEPTHS IN IN BLOWS PER FOOT UNLESS OTHERWISE NOTED.

THE BORING LOCATIONS WERE ESTABLISHED BY THE PROVIDED PROJECT PLANS AND WITH A SUB-METER ACCURACY GPS UNIT (TRIMBLE GEO 7X). THE GROUND SURFACE ELEVATIONS AT THE BORING LOCATIONS WERE INTERPOLATED BASED ON THE SPOT ELEVATIONS PROVIDED BY WANTMAN GROUP, INC.

SPLIT SPOON SAMPLER:
 INSIDE DIAMETER: 1.375 IN.
 OUTSIDE DIAMETER: 2.0 IN.
 AVERAGE HAMMER DROP: 30 IN.
 HAMMER WEIGHT: 140 LBS.

CORRELATION OF STANDARD PENETRATION RESISTANCE WITH RELATIVE DENSITY AND CONSISTENCY OF SOIL

SOIL TYPE	MANUAL HAMMER (SAFETY)	AUTOMATIC HAMMER	RELATIVE DENSITY
	N VALUE (blows per foot)	N VALUE (blows per foot)	
GRANULAR SOILS SANDS	0-4	0-3	VERY LOOSE
	4-10	3-8	LOOSE
	10-30	8-24	MEDIUM DENSE
	30-50	24-40	DENSE
	OVER 50	OVER 40	VERY DENSE
NON-GRANULAR SOILS SILTS, CLAYS, MUCK, PEAT	0-2	0-1	VERY SOFT
	2-4	1-3	SOFT
	4-8	3-6	FIRM
	8-15	6-12	STIFF
	15-30	12-24	VERY STIFF
	OVER 30	OVER 24	HARD

GEOTECHNICAL AND ENVIRONMENTAL CONSULTANTS, INC. 919 Lake Baldwin Lane Orlando, FL 32814 T 407-898-1818 F 407-898-1837 Certificate of Authorization No. 5882 DANIEL C. STANFILL PE NO. 42763	PROJECT NO. 3747G DATE \$DATES\$ DRAWN BY BMM CHECKED BY GPB CHECKED BY DCS 42763	SPT BORING RESULTS PALM BEACH COUNTY SPORTS COMPLEX	FIGURE NO. 3	(G18)
	C.A.D.D. FILE PROJECT NO. 14023.04 SHEET _____ OF _____			

PHASE 2 CONSTRUCTION SET DATED 02-10-2017

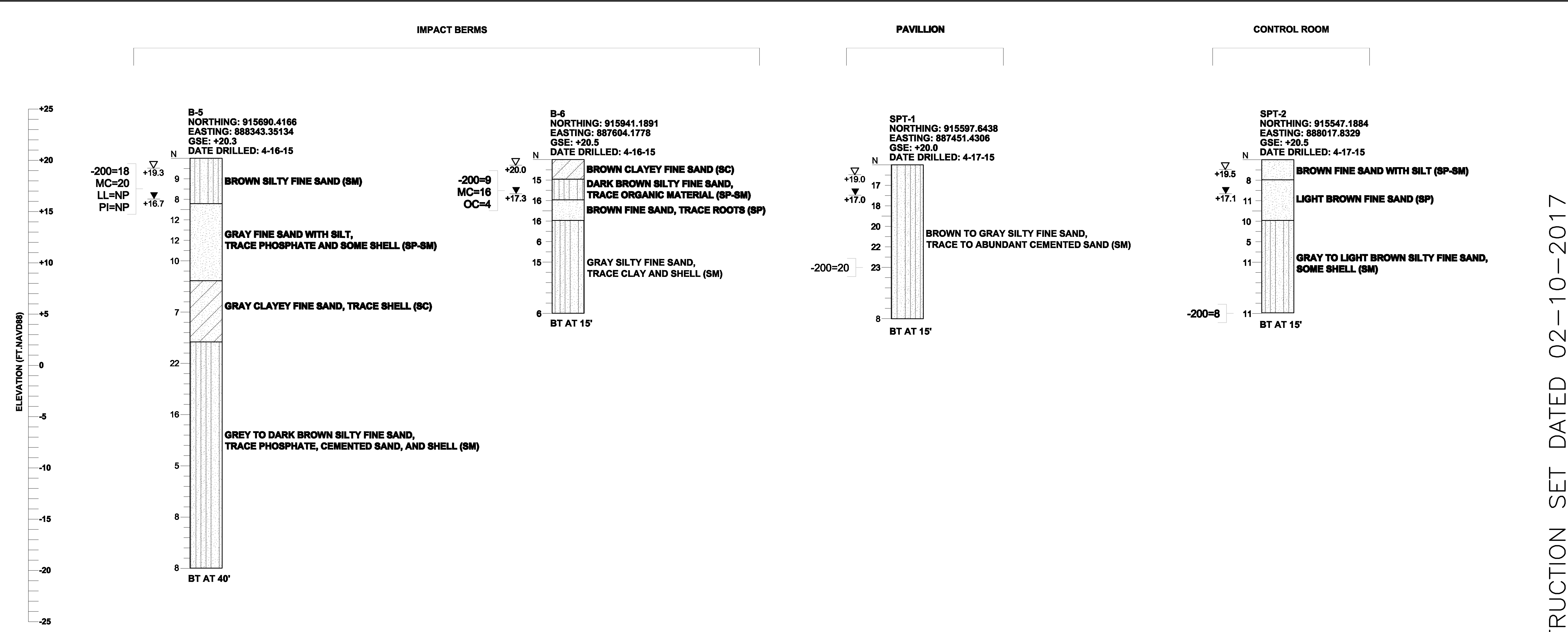
SPT BORING RESULTS

PALM BEACH COUNTY SHOOTING SPORTS PARK



C. VARGAS & ASSOCIATES, LTD.
 CONSULTING ENGINEERS
 8808 ARLINGTON EXPRESSWAY
 PALM BEACH, FL 33410
 PHONE 561-721-2254 FAX 561-721-2297
 CERT. OF AUTH. NO. 000000278
 DRAWN BY _____ CHECKED BY C. VARGAS DATE 02-10-17
 SUBMITTED BY _____ REC. ENGR. NO. 16297

THIS DRAWING IS THE INSTRUMENT OF SERVICE AND PROPERTY OF C. VARGAS & ASSOCIATES, LTD. ANY USE OR REPRODUCTION WITHOUT EXPRESSED WRITTEN PERMISSION OF THIS CORPORATION IS PROHIBITED. ALL RIGHTS OF DESIGN AND INVENTION ARE EXPRESSLY RESERVED.



LEGEND

GSE GROUND SURFACE ELEVATION (FT.NAVD88)

N STANDARD PENETRATION RESISTANCE, BLOWS PER FOOT

▽ ESTIMATED SEASONAL HIGH GROUNDWATER ELEVATION (FT.NAVD88)

▽ ENCOUNTERED GROUNDWATER ELEVATION (FT.NAVD88) 24 HRS. AFTER DATE DRILLED

BT BORING TERMINATED AT DEPTH INDICATED

-200= PERCENT PASSING NO. 200 U.S. STANDARD SIEVE

MC= PERCENT NATURAL MOISTURE CONTENT

LL= LIQUID LIMIT

PI= PLASTICITY INDEX

OC= PERCENT ORGANIC CONTENT

NP= NON-PLASTIC

SAND
 SAND AND SILT
 SAND AND CLAY

GENERAL NOTES

SUBSURFACE CONDITIONS SHOWN ON THE BORINGS REPRESENT THE CONDITIONS ENCOUNTERED AT THE BORING LOCATIONS. ACTUAL CONDITIONS BETWEEN THE BORINGS MAY VARY FROM THOSE SHOWN. UNIFIED SOIL CLASSIFICATIONS SHOWN ON THE BORINGS ARE BASED ON VISUAL EXAMINATION AND THE LABORATORY TESTING SHOWN.

STANDARD PENETRATION TEST BORINGS WERE PERFORMED IN ACCORDANCE WITH ASTM D-1586. STANDARD PENETRATION RESISTANCES ARE SHOWN ON THE BORINGS AT THE TEST DEPTHS IN IN BLOWS PER FOOT UNLESS OTHERWISE NOTED.

THE BORING LOCATIONS WERE ESTABLISHED BY THE PROVIDED PROJECT PLANS AND WITH A SUB-METER ACCURACY GPS UNIT (TRIMBLE GEO 7X). THE GROUND SURFACE ELEVATIONS AT THE BORING LOCATIONS WERE INTERPOLATED BASED ON THE SPOT ELEVATIONS PROVIDED BY WANTMAN GROUP, INC.

SPLIT SPOON SAMPLER:
 INSIDE DIAMETER: 1.375 IN.
 OUTSIDE DIAMETER: 2.0 IN.
 AVERAGE HAMMER DROP: 30 IN.
 HAMMER WEIGHT: 140 LBS.

CORRELATION OF STANDARD PENETRATION RESISTANCE WITH RELATIVE DENSITY AND CONSISTENCY OF SOIL

SOIL TYPE	MANUAL HAMMER (SAFETY)	AUTOMATIC HAMMER	RELATIVE DENSITY / CONSISTENCY
	N VALUE (blows per foot)	N VALUE (blows per foot)	
GRANULAR SOILS SANDS	0-4	0-3	VERY LOOSE
	4-10	3-8	LOOSE
	10-30	8-24	MEDIUM DENSE
	30-50	24-40	DENSE
	OVER 50	OVER 40	VERY DENSE
NON-GRANULAR SOILS SILTS, CLAYS, MUCK, PEAT	0-2	0-1	VERY SOFT
	2-4	1-3	SOFT
	4-8	3-6	FIRM
	8-15	6-12	STIFF
	15-30	12-24	VERY STIFF
	OVER 30	OVER 24	HARD

GEOTECHNICAL AND ENVIRONMENTAL CONSULTANTS, INC. 919 Lake Baldwin Lane Orlando, FL 32814 T 407-898-1818 F 407-898-1837 Certificate of Authorization No. 5882 DANIEL C. STANFILL PE NO. 42763	GEC	SPT BORING RESULTS PALM BEACH COUNTY SPORTS COMPLEX	FIGURE NO. 4	G19
		PROJECT NO. 3747G DATE \$DATES DRAWN BY BMM CHECKED BY GPB CHECKED BY	C.A.D.D. FILE PROJECT NO. 14023.04 SHEET OF	

PHASE 2 CONSTRUCTION SET DATED 02-10-2017

PALM BEACH COUNTY SHOOTING SPORTS PARK	SPT BORING RESULTS
C. VARGAS & ASSOCIATES, LTD. CONSULTING ENGINEERS 8808 ARLINGTON EXPRESSWAY PALM BEACH, FL 33410 PHONE 561-721-2234 FAX 561-721-2297 CERT. OF AUTH. NO.00002778	
DRAWN BY _____ CHECKED BY C. VARGAS DATE 02-10-17	SUBMITTED BY _____ REG. ENGR. NO. 16297
	REVISION NO. DATE BY