



**Florida Fish
and Wildlife
Conservation
Commission**

Commissioners

Bo Rivard
Chairman
Panama City

Robert A. Spottswood
Vice Chairman
Key West

Richard Hanas
Oviedo

Gary Nicklaus
Jupiter

Sonya Rood
St. Augustine

Michael W. Sole
Tequesta

Executive Staff

Eric Sutton
Executive Director

Thomas H. Eason, Ph.D.
Assistant Executive Director

Jennifer Fitzwater
Chief of Staff

Finance and Budget Office

Jodi Bailey
Chief Operating Officer

(850) 488-6551
(850) 922-8060 FAX

*Managing fish and wildlife
resources for their long-term
well-being and the benefit
of people.*

620 South Meridian Street
Tallahassee, Florida
32399-1600
Voice: (850) 488-4676

Hearing/speech-impaired:
(800) 955-8771 (T)
(800) 955-8770 (V)

MyFWC.com

DATE JUNE 20, 2018

ADDENDUM NO. 1

BID NO. FWC 17/18-130

BID TITLE: BLUE CRAB, STONE CRAB AND SPINY LOBSTER TRAP TAGS

UPDATE QUESTIONS & ANSWERS

The enclosed addendum has been issued for consideration in the preparation of your response to the Florida Fish and Wildlife Conservation Commission's (FWC) Solicitation No. FWC 17/18-130, "BLUE CRAB, STONE CRAB AND SPINY LOBSTER TRAP TAGS".

All responses to the subject solicitation must be received no later than 1:30 PM (EST) on Monday, June 25, 2018.

A response received after the exact time specified will not be considered. Failure to file a protest within the time prescribed in Section 120.57(3), Florida Statutes, or failure to post the bond or other security required by law within the time allowed for filing a bond shall constitute a waiver of proceedings under Chapter 120, Florida Statutes (F.S.). Written notices, formal requests and proceedings must conform with the requirements set forth in Chapter 28-110, Florida Administrative Code (F.A.C.). Protests must be filed with the Purchasing Office, Fish and Wildlife Conservation Commission, Suite 100, 2590 Executive Center Circle, Tallahassee, Florida 32301 within the time prescribed in Section 120.57(3), Florida Statutes and Chapter 28-110, Florida Administrative Code.

Sincerely,

Jackie McNealy
FWC Procurement Manager

BEGIN ADDENDUM

ITEM 1 – QUESTIONS AND ANSWERS

QUESTION #1

Could you tell me the delivery address about the Trap Tag for me to check the delivery cost?

Answer #1

Delivery is to multiple addresses across the state. Tags are delivered to the customer who places the order and orders are sent to the vendor once per week.

All technical specifications and plans are located at:

<https://explorer.myflorida.com/>

To access documents at this website, use the following Username and Password:

Username: FWC_Bid_Info

Password: FWCvendors1

QUESTION #2

Did you have any requirements about the vendor qualification?

Answer #2

All requirements are listed in the bid document.

QUESTION #3

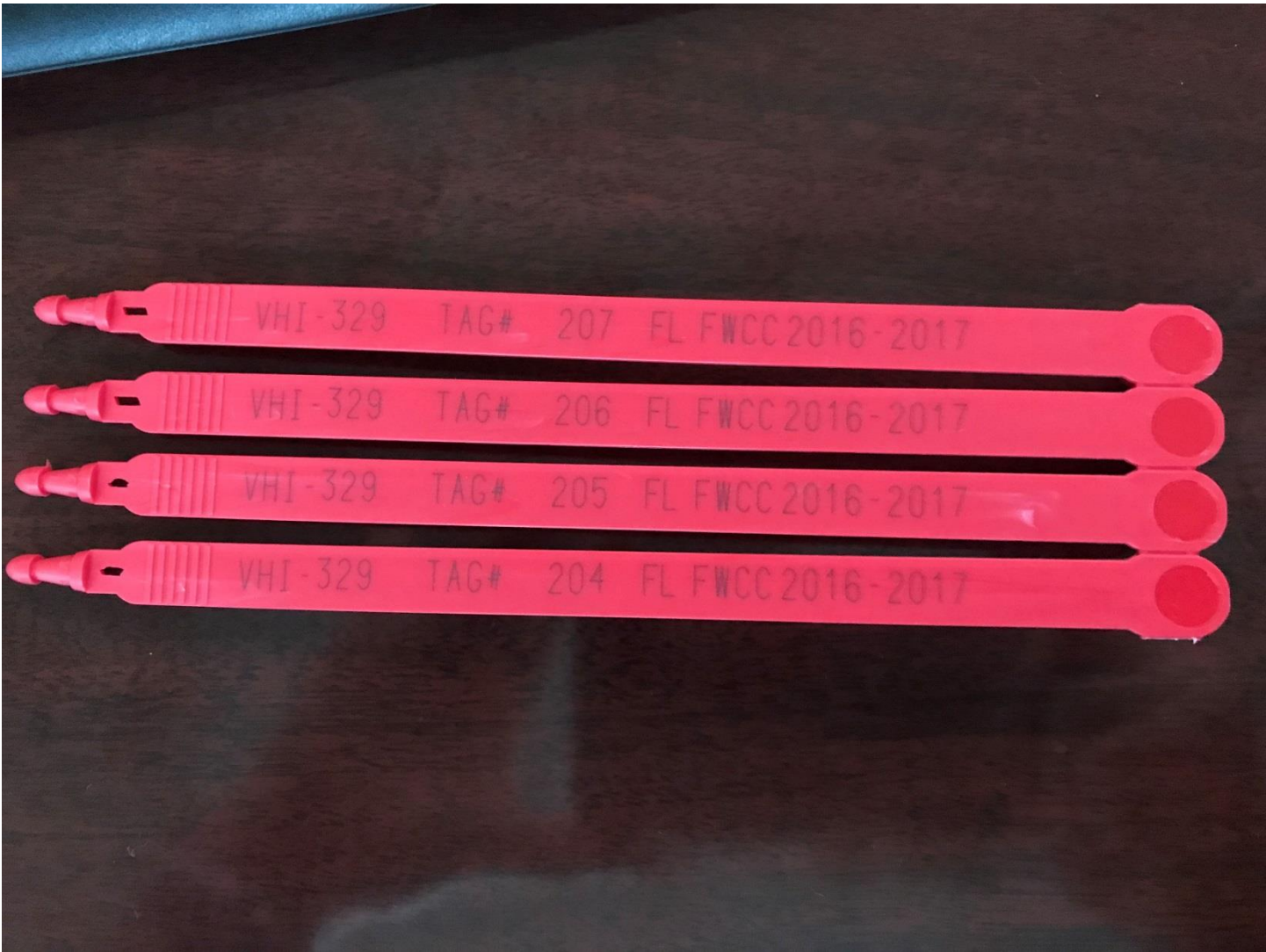
Could you provide me the close-up photos about the tags?

Answer #3

See images below.

VHI-329 TAG# 207 FL FWCC 2016-2017
VHI-329 TAG# 206 FL FWCC 2016-2017
VHI-329 TAG# 205 FL FWCC 2016-2017
VHI-329 TAG# 204 FL FWCC 2016-2017





VHI-329 TAG# 207 FL FWCC 2016-2017

VHI-329 TAG# 206 FL FWCC 2016-2017

VHI-329 TAG# 205 FL FWCC 2016-2017

VHI-329 TAG# 204 FL FWCC 2016-2017



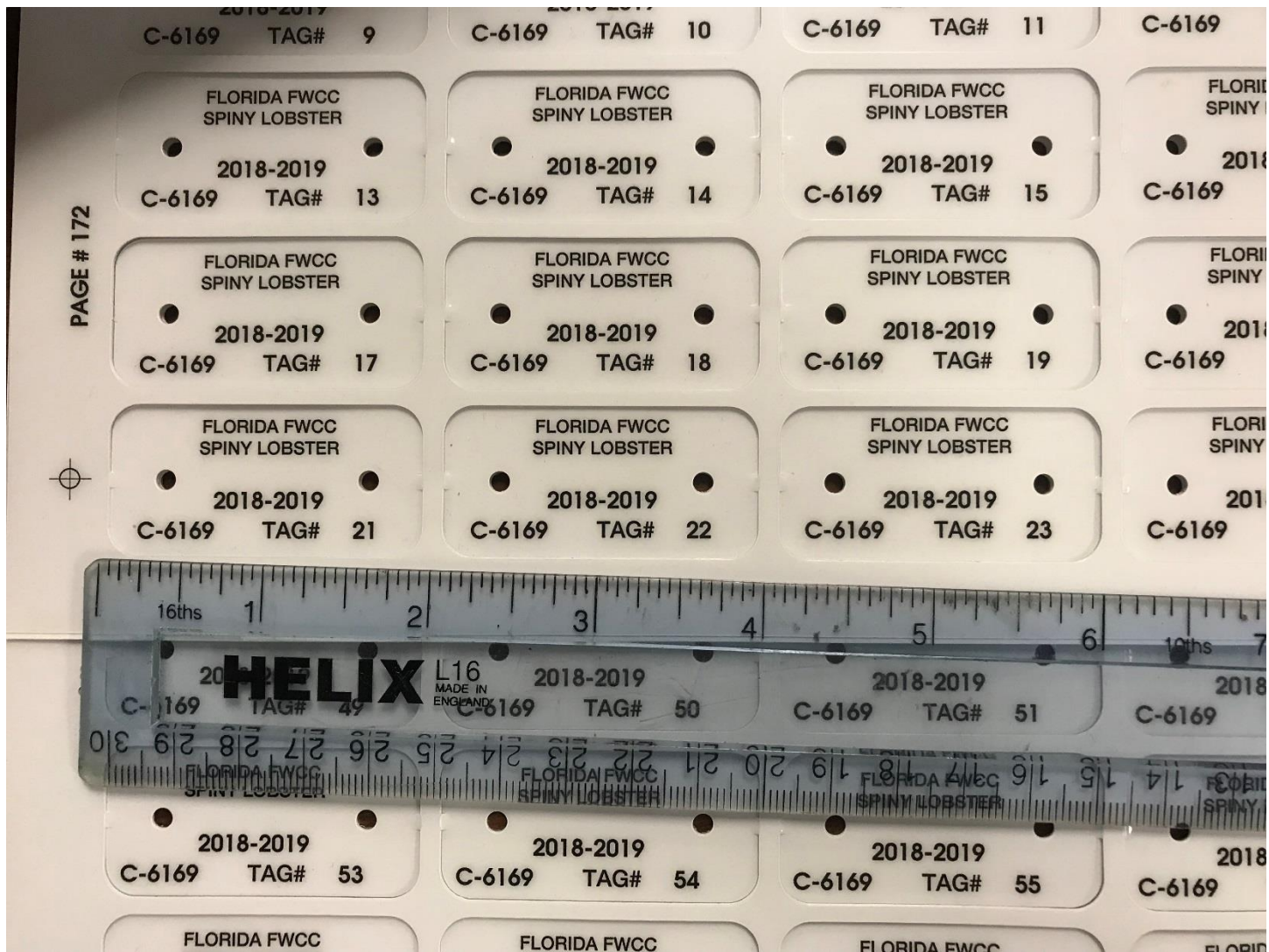
PAGE # 172

FLORIDA FWCC SPINY LOBSTER 2018-2019 C-6169 TAG# 5	FLORIDA FWCC SPINY LOBSTER 2018-2019 C-6169 TAG# 6	FLORIDA FWCC SPINY LOBSTER 2018-2019 C-6169 TAG# 7	FLORIDA FWCC SPINY LOBSTER 2018-2019 C-6169 TAG# 8
FLORIDA FWCC SPINY LOBSTER 2018-2019 C-6169 TAG# 9	FLORIDA FWCC SPINY LOBSTER 2018-2019 C-6169 TAG# 10	FLORIDA FWCC SPINY LOBSTER 2018-2019 C-6169 TAG# 11	FLORIDA FWCC SPINY LOBSTER 2018-2019 C-6169 TAG# 12
FLORIDA FWCC SPINY LOBSTER 2018-2019 C-6169 TAG# 13	FLORIDA FWCC SPINY LOBSTER 2018-2019 C-6169 TAG# 14	FLORIDA FWCC SPINY LOBSTER 2018-2019 C-6169 TAG# 15	FLORIDA FWCC SPINY LOBSTER 2018-2019 C-6169 TAG# 16
FLORIDA FWCC SPINY LOBSTER 2018-2019 C-6169 TAG# 17	FLORIDA FWCC SPINY LOBSTER 2018-2019 C-6169 TAG# 18	FLORIDA FWCC SPINY LOBSTER 2018-2019 C-6169 TAG# 19	FLORIDA FWCC SPINY LOBSTER 2018-2019 C-6169 TAG# 20
FLORIDA FWCC SPINY LOBSTER 2018-2019 C-6169 TAG# 21	FLORIDA FWCC SPINY LOBSTER 2018-2019 C-6169 TAG# 22	FLORIDA FWCC SPINY LOBSTER 2018-2019 C-6169 TAG# 23	FLORIDA FWCC SPINY LOBSTER 2018-2019 C-6169 TAG# 24
FLORIDA FWCC SPINY LOBSTER 2018-2019 C-6169 TAG# 25	FLORIDA FWCC SPINY LOBSTER 2018-2019 C-6169 TAG# 26	FLORIDA FWCC SPINY LOBSTER 2018-2019 C-6169 TAG# 27	FLORIDA FWCC SPINY LOBSTER 2018-2019 C-6169 TAG# 28
FLORIDA FWCC SPINY LOBSTER 2018-2019 C-6169 TAG# 29	FLORIDA FWCC SPINY LOBSTER 2018-2019 C-6169 TAG# 30	FLORIDA FWCC SPINY LOBSTER 2018-2019 C-6169 TAG# 31	FLORIDA FWCC SPINY LOBSTER 2018-2019 C-6169 TAG# 32
FLORIDA FWCC SPINY LOBSTER 2018-2019 C-6169 TAG# 33	FLORIDA FWCC SPINY LOBSTER 2018-2019 C-6169 TAG# 34	FLORIDA FWCC SPINY LOBSTER 2018-2019 C-6169 TAG# 35	FLORIDA FWCC SPINY LOBSTER 2018-2019 C-6169 TAG# 36
FLORIDA FWCC SPINY LOBSTER 2018-2019 C-6169 TAG# 37	FLORIDA FWCC SPINY LOBSTER 2018-2019 C-6169 TAG# 38	FLORIDA FWCC SPINY LOBSTER 2018-2019 C-6169 TAG# 39	FLORIDA FWCC SPINY LOBSTER 2018-2019 C-6169 TAG# 40

HELIX L16
MADE IN ENGLAND



Shel



END ADDENDUM

PAGE INTENTIONALLY LEFT BLANK