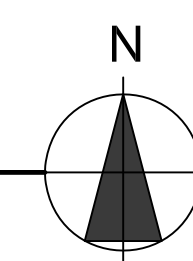


**BUILDING ROOF - DEMOLITION PLAN**  
 SCALE: 1/8" = 1'-0"



**McGinniss & Fleming  
 Engineering, Inc.**

*Mechanical · Electrical · Fire Protection · Plumbing*

1401 Miccosukee Road - Suite 200  
 Tallahassee, Florida 32308

CA #05990

**ROOFTOP HVAC REPLACEMENT  
 DOYLE CONNER LAB ADMIN BUILDING  
 TALLAHASSEE, FLORIDA**

**FL. DEPT. OF AGRICULTURE &  
 CONSUMER SERVICES**

DATE:  
 November 10, 2017

DESIGNED BY:  
 CKF

DRAWN BY:  
 TEB

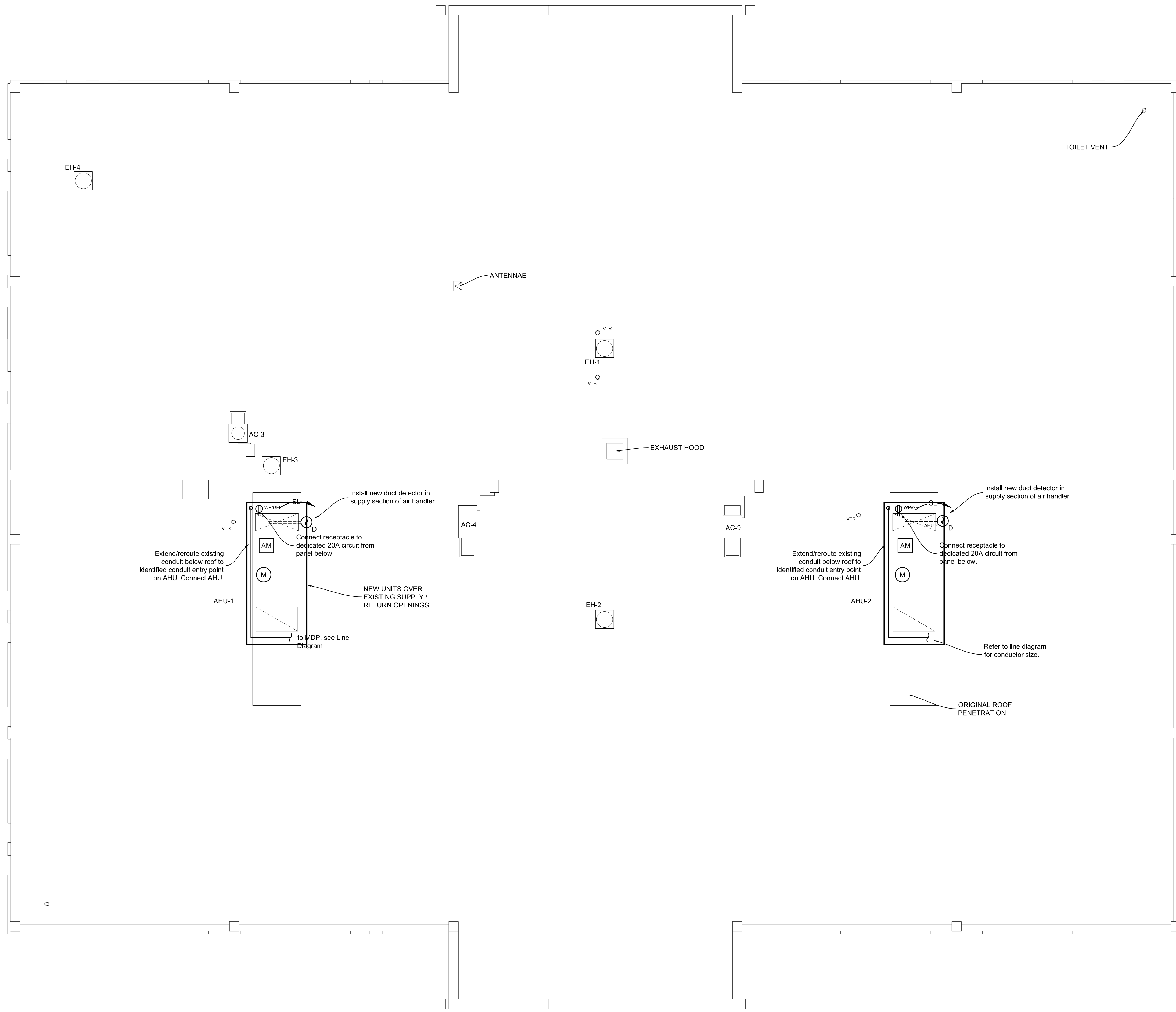
SUBMITTAL:  
 CONSTRUCTION DOCUMENTS

SHEET TITLE:  
 ELECTRICAL  
 BUILDING ROOF  
 DEMOLITION PLAN

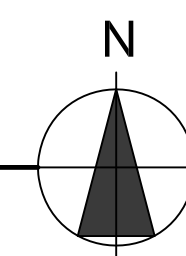
SHEET:  
**E2.1**

JOB NUMBER:

1712



**BUILDING ROOF - NEW WORK PLAN**  
 SCALE: 1/8" = 1'-0"



**McGinniss & Fleming  
 Engineering, Inc.**

*Mechanical · Electrical · Fire Protection · Plumbing*

1401 Miccosukee Road - Suite 200  
 Tallahassee, Florida 32308

CA #05990

**ROOFTOP HVAC REPLACEMENT  
 DOYLE CONNER LAB ADMIN BUILDING  
 TALLAHASSEE, FLORIDA**

**FL. DEPT. OF AGRICULTURE &  
 CONSUMER SERVICES**

DATE:  
 November 10, 2017

DESIGNED BY:  
 CKF

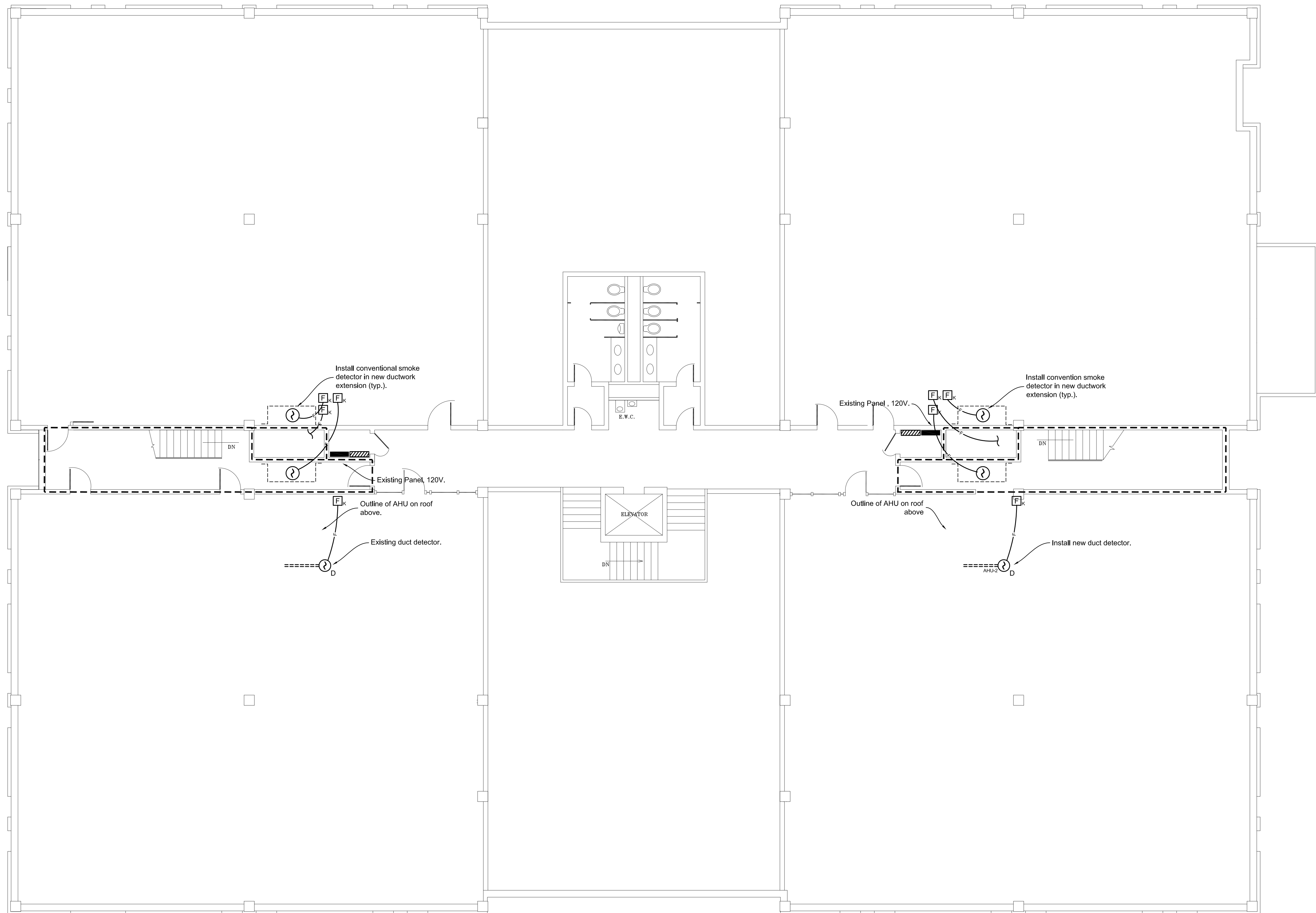
DRAWN BY:  
 TEB

SUBMITTAL:  
 CONSTRUCTION DOCUMENTS

SHEET TITLE:  
 ELECTRICAL  
 BUILDING ROOF  
 NEW WORK PLAN

SHEET:  
**E3.1**

JOB NUMBER:  
 1712



McGinniss & Fleming  
Engineering, Inc.

Mechanical • Electrical • Fire Protection • Plumbing

1401 Miccosukee Road - Suite 200  
Tallahassee, Florida 32308

CA #05090

ROOFTOP HVAC REPLACEMENT  
DOYLE CONNER LAB ADMIN BUILDING  
TALLAHASSEE, FLORIDA

FL. DEPT. OF AGRICULTURE &  
CONSUMER SERVICES

DATE:  
November 10, 2017

DESIGNED BY:  
CKF

DRAWN BY:  
TEB

SUBMITTAL:  
CONSTRUCTION DOCUMENTS

SHEET TITLE:  
ELECTRICAL  
SECOND FLOOR LEVEL  
NEW WORK

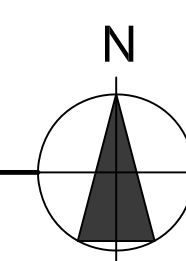
SHEET:

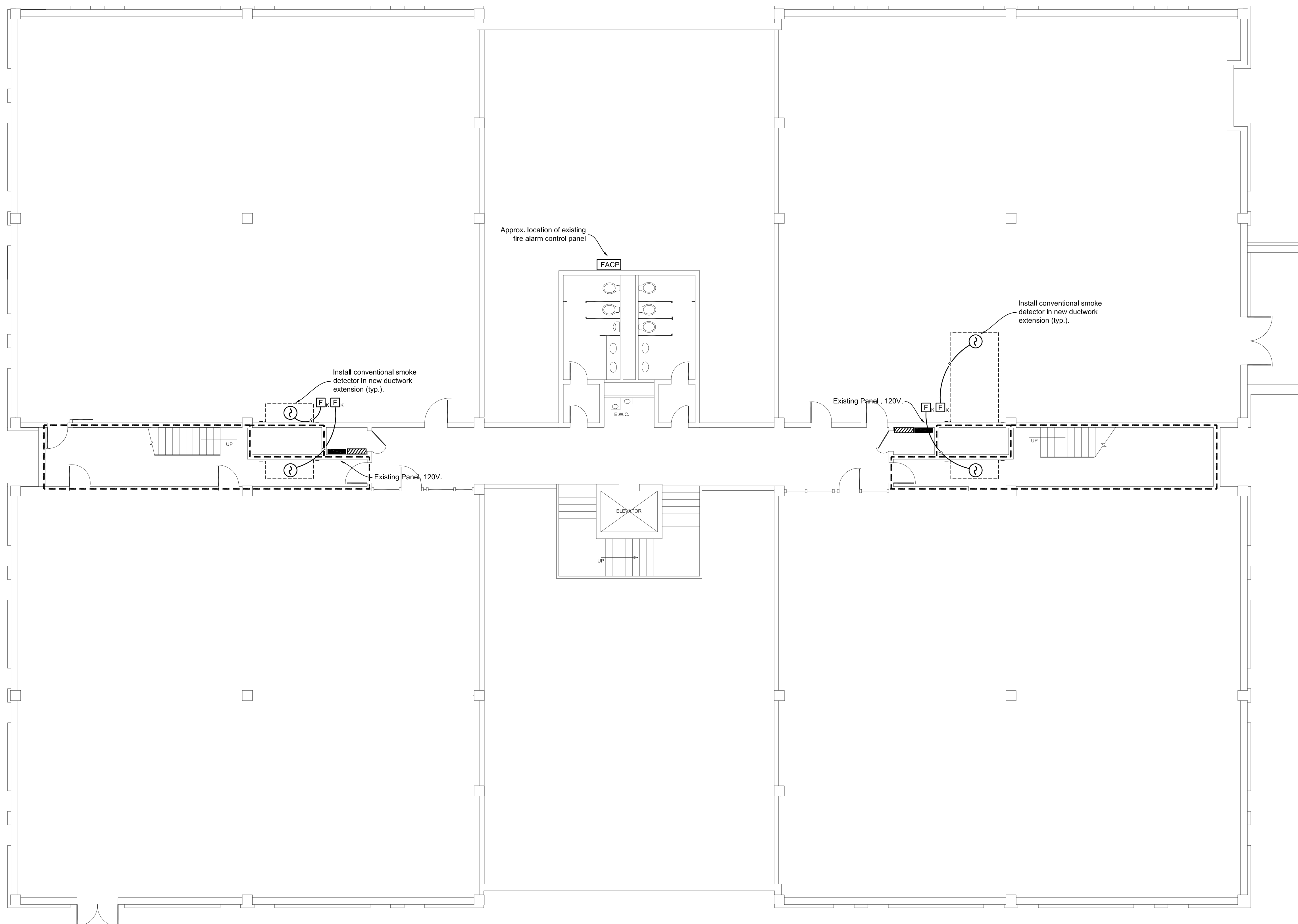
**E3.2**

JOB NUMBER:

1712

SECOND FLOOR PLAN - NEW WORK  
SCALE: 1/8" = 1'-0"





McGinniss & Fleming  
Engineering, Inc.

Mechanical • Electrical • Fire Protection • Plumbing

1401 Miccosukee Road - Suite 200  
Tallahassee, Florida 32308

CA #05990

ROOFTOP HVAC REPLACEMENT  
DOYLE CONNER LAB ADMIN BUILDING  
TALLAHASSEE, FLORIDA

FL. DEPT. OF AGRICULTURE &  
CONSUMER SERVICES

DATE:  
November 10, 2017

DESIGNED BY:  
CKF

DRAWN BY:  
TEB

SUBMITTAL:  
CONSTRUCTION DOCUMENTS

SHEET TITLE:  
ELECTRICAL  
FIRST FLOOR LEVEL  
NEW WORK

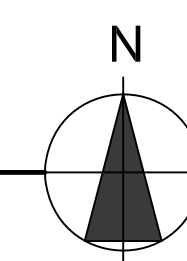
SHEET:

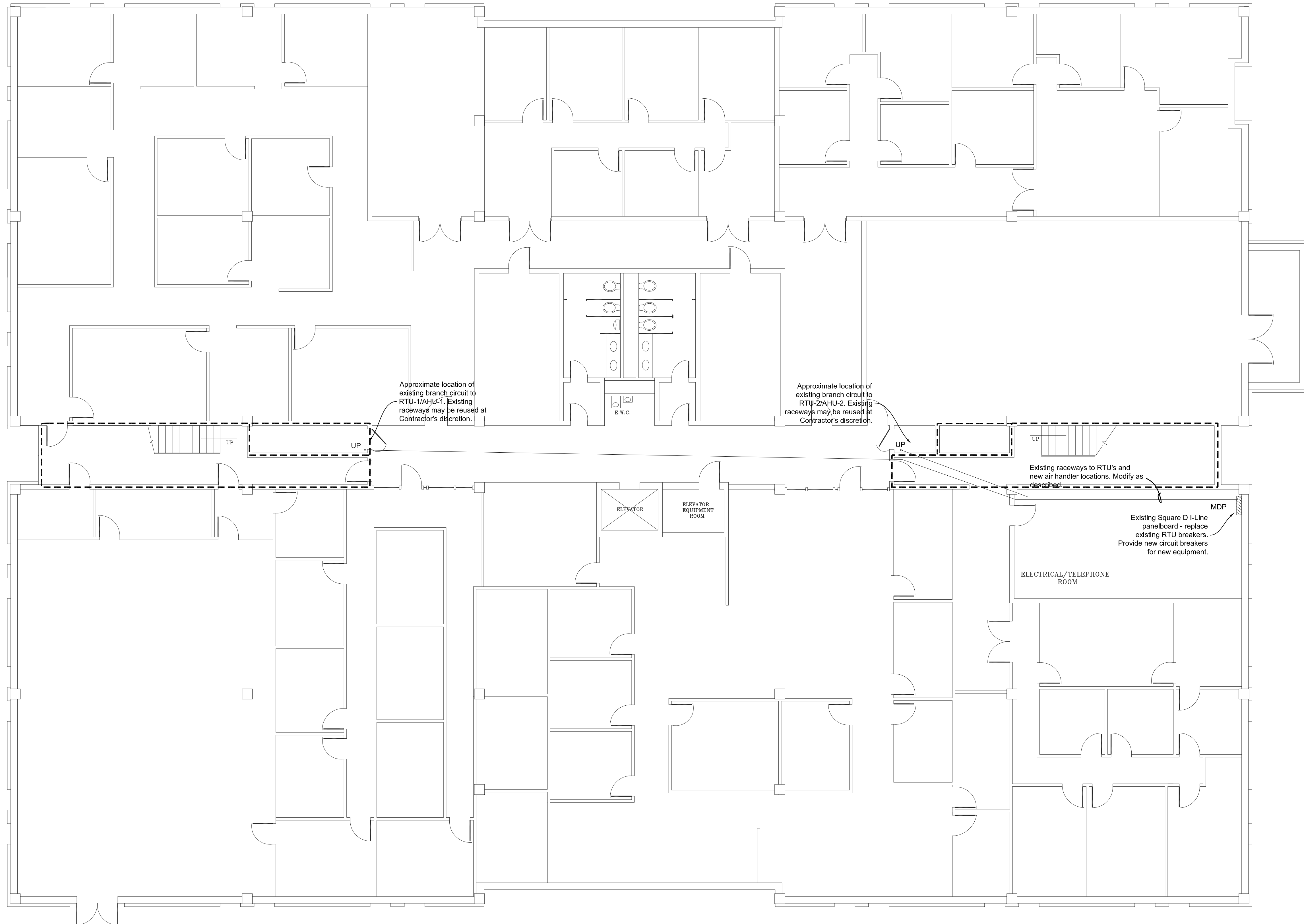
**E3.3**

JOB NUMBER:

1712

FIRST FLOOR PLAN - NEW WORK  
SCALE: 1/8" = 1'-0"





McGinniss & Fleming  
Engineering, Inc.

Mechanical • Electrical • Fire Protection • Plumbing

1401 Miccosukee Road - Suite 200  
Tallahassee, Florida 32308

CA #05090

ROOFTOP HVAC REPLACEMENT  
DOYLE CONNER LAB ADMIN BUILDING  
TALLAHASSEE, FLORIDA

FL. DEPT. OF AGRICULTURE &  
CONSUMER SERVICES

DATE:  
November 10, 2017

DESIGNED BY:  
CKF

DRAWN BY:  
TEB

SUBMITTAL:  
CONSTRUCTION DOCUMENTS

SHEET TITLE:  
ELECTRICAL  
BASEMENT LEVEL  
DEMOLITION PLAN

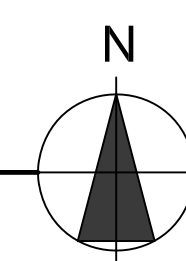
SHEET:

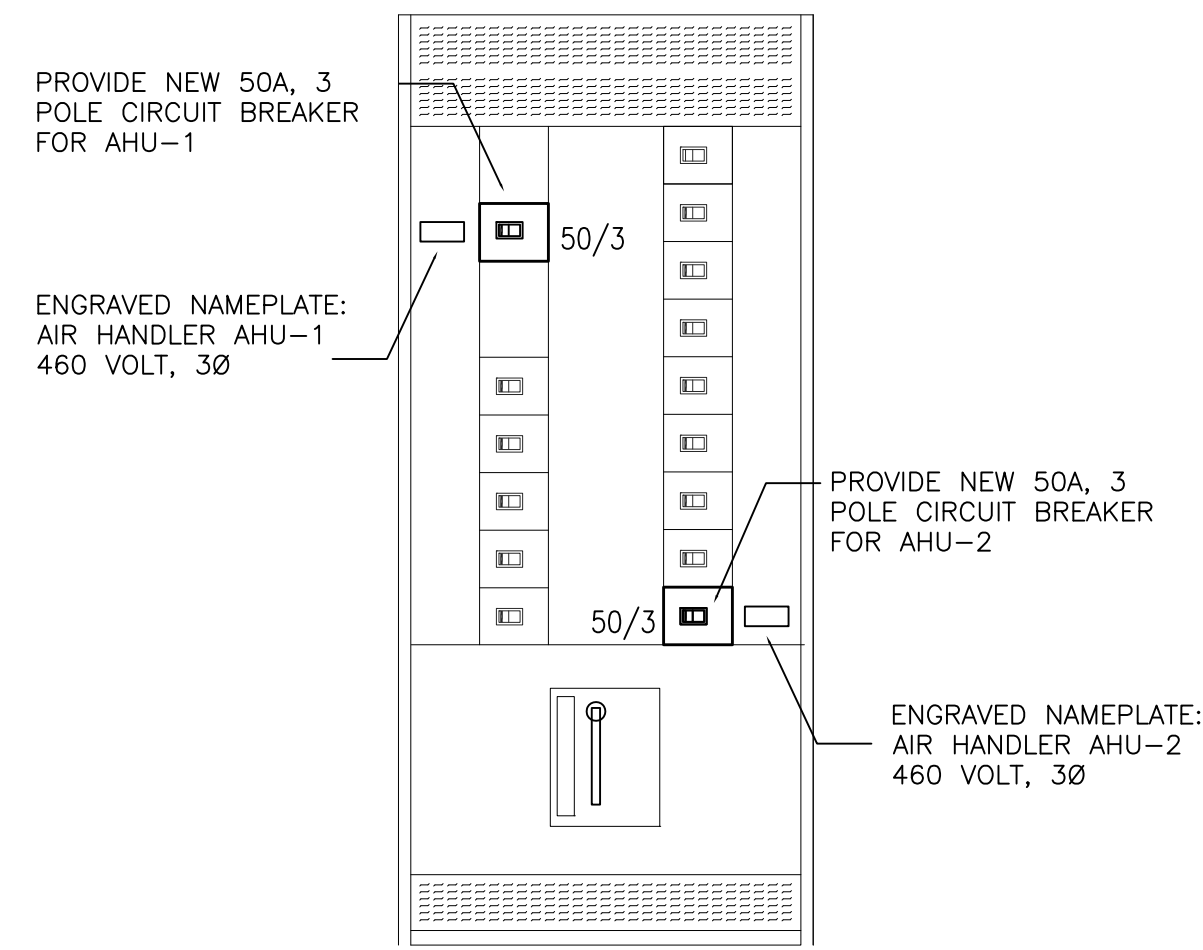
**E3.4**

JOB NUMBER:

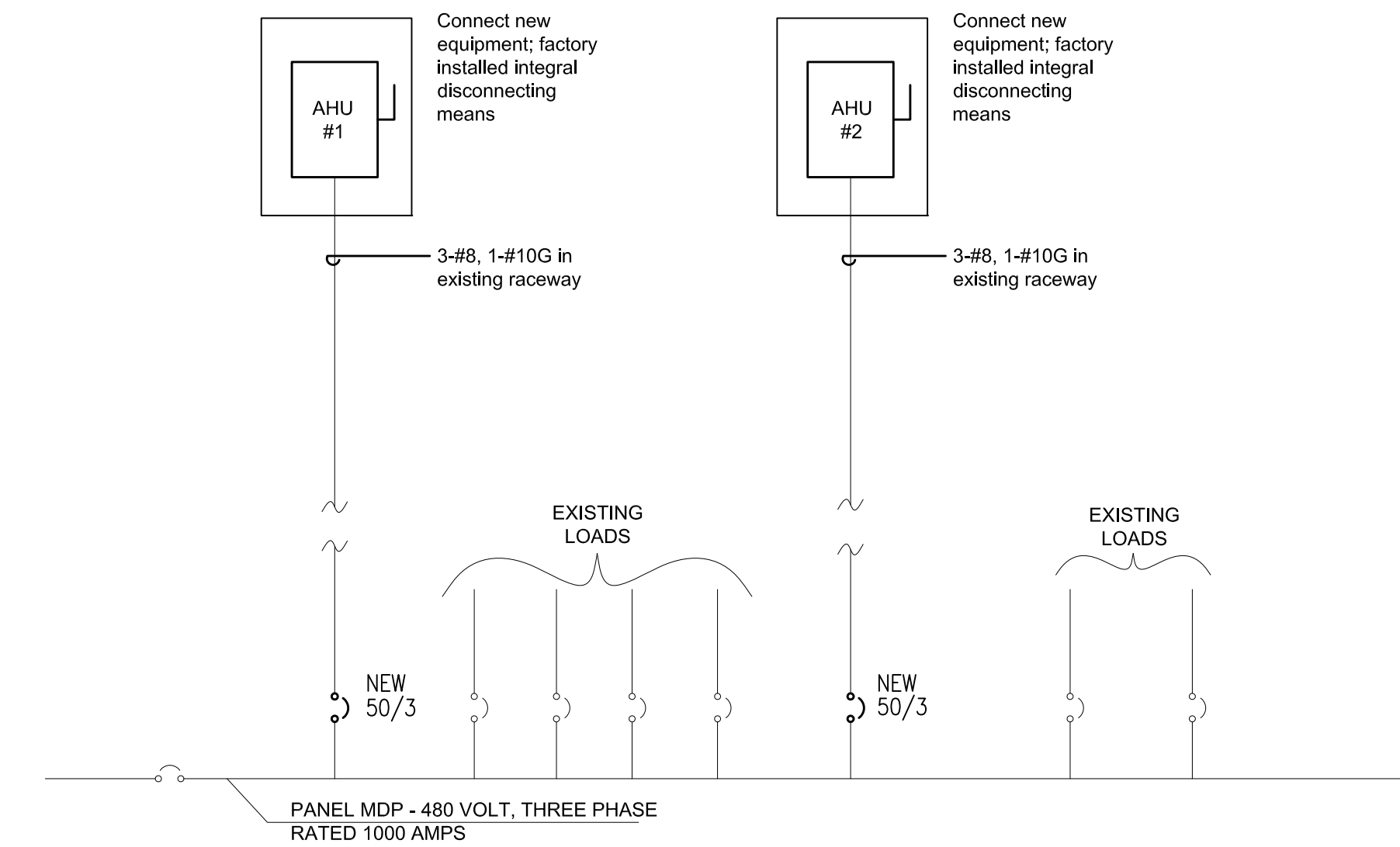
1712

BASEMENT FLOOR PLAN - NEW WORK  
SCALE: 1/8" = 1'-0"

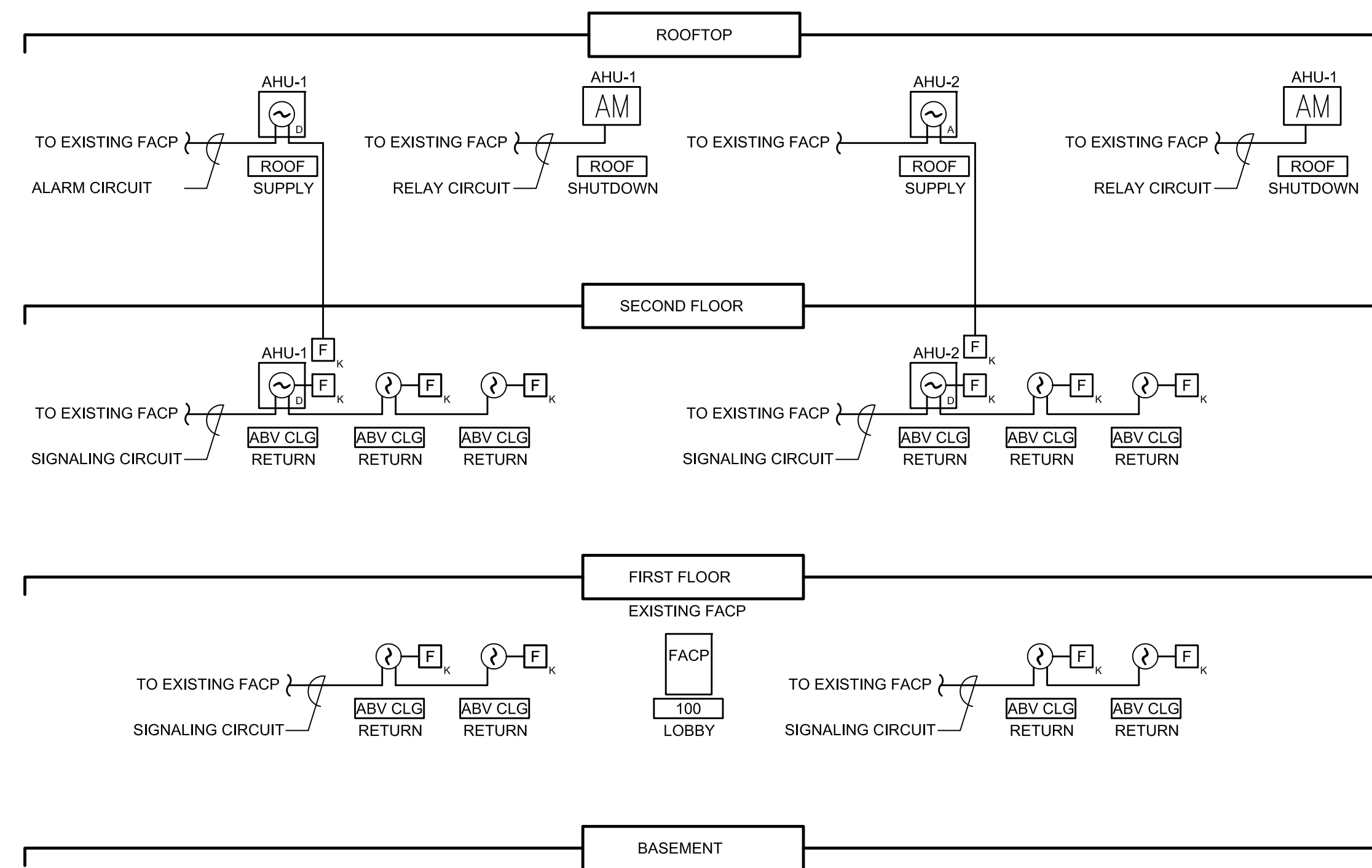




**PANEL MDP ELEVATION**  
NOT TO SCALE



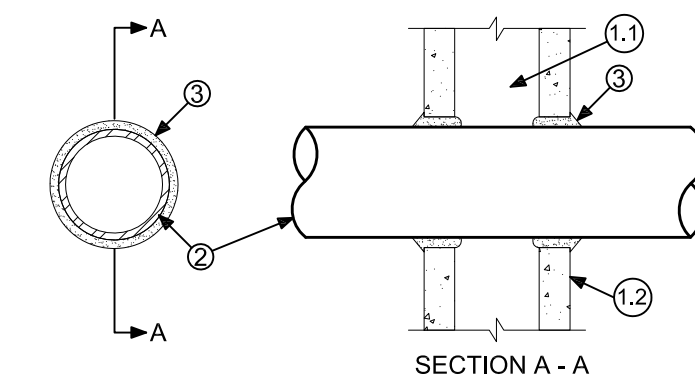
**POWER ONE-LINE NEW WORK**  
NOT TO SCALE



- NOTES:
1. PROVIDE END-OF-LINE RESISTORS AS REQUIRED.
  2. FACP IS EXISTING TO REMAIN.
  3. EACH CONCEALED SMOKE DETECTOR SHALL HAVE A REMOTE INDICATOR STATION INSTALLED IN CEILING OR WALL.
  4. ACTIVATION OF ANY SMOKE DETECTOR SHALL INDICATE AS TROUBLE ON THE FACP AND CAUSE THE RESPECTIVE AHU TO STOP.

**FIRE ALARM LINE DIAGRAM - NEW WORK**  
NOT TO SCALE

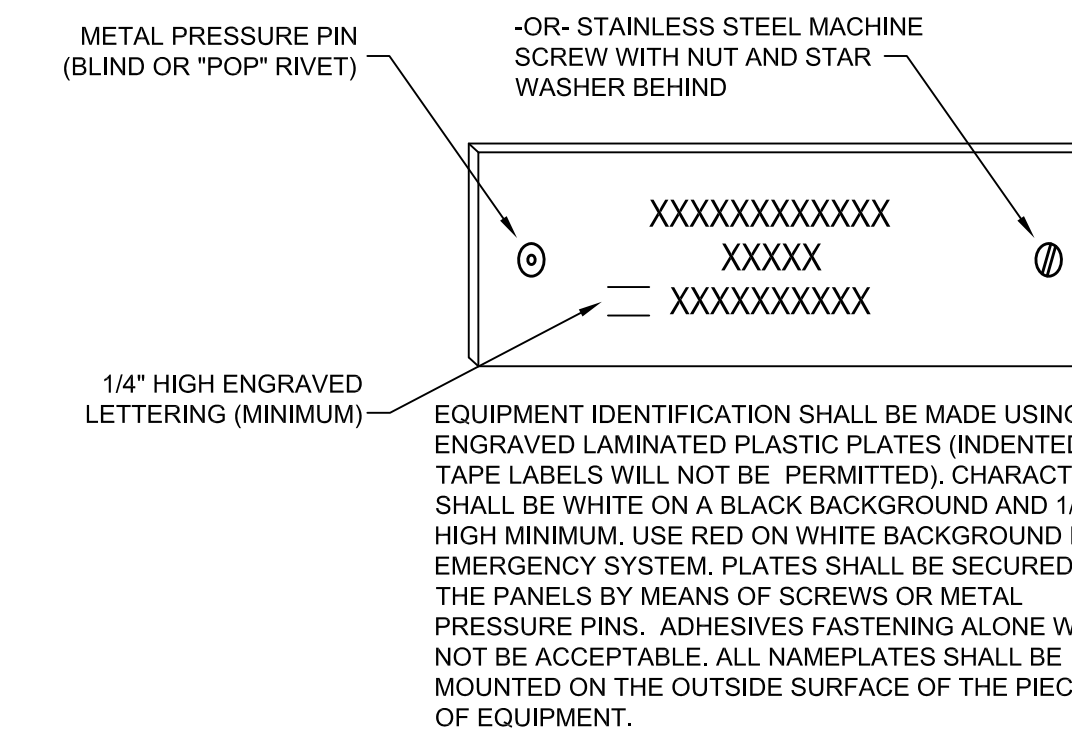
SYSTEM NO. W-L-1001  
(FORMERLY SYSTEM NO. 147)  
F RATINGS - 1, 2, 3 AND 4 HOUR (SEE ITEMS 2 & 3)  
T RATINGS - 0, 1, 2, 3 AND 4 HOUR (SEE ITEM 3)  
L RATING AT AMBIENT - LESS THAN 1 CFM/SQ FT  
L RATING AT 400°F - LESS THAN 1 CFM/SQ FT



1. WALL ASSEMBLY - THE 1, 2, 3 OR 4 HOUR FIRE-RATED GYPSUM WALLBOARD / STUD WALL ASSEMBLY SHALL BE CONSTRUCTED OF THE MATERIALS AND IN THE MANNER DESCRIBED IN THE INDIVIDUAL U300 OR U400 SERIES WALL OR PARTITION DESIGNS IN THE UL FIRE RESISTANCE DIRECTORY AND SHALL INCLUDE THE FOLLOWING CONSTRUCTION FEATURES:
  - 1.1. STUDS - WALL FRAMING MAY CONSIST OF EITHER WOOD STUDS (MAXIMUM 2 HOUR FIRE RATED ASSEMBLIES) OR STEEL CHANNEL STUDS. WOOD STUDS TO CONSIST OF NOMINAL 2"x4" LUMBER SPACED 16" O.C. WITH NOMINAL 2"x4" LUMBER END PLATES AND CROSS BRACES. STEEL STUDS TO BE MINIMUM 3-5/8" WIDE BY 1-3/8" DEEP CHANNELS SPACED MAXIMUM OF 24" O.C.
  - 1.2. WALLBOARD, GYPSUM - NOMINAL 1/2" OR 5/8" THICK, 4' WIDE WITH SQUARE OR TAPERED EDGES. THE GYPSUM WALLBOARD TYPE, THICKNESS, NUMBER OF LAYERS, FASTENER TYPE AND SHEET ORIENTATION SHALL BE AS SPECIFIED IN THE INDIVIDUAL U300 OR U400 SERIES DESIGN IN THE UL FIRE RESISTANCE DIRECTORY. MAXIMUM DIAMETER OF OPENING IS 13-1/2".
2. PIPE OR CONDUIT - NOMINAL 12" DIAMETER (OR SMALLER) SCHEDULE 10 (OR HEAVIER) STEEL PIPE, NOMINAL 12" DIAMETER (OR SMALLER) SERVICE WEIGHT (OR HEAVIER) CAST IRON SOIL PIPE, NOMINAL 12" DIAMETER (OR SMALLER) CLASS 50 (OR HEAVIER) DUCTILE IRON PRESSURE PIPE, NOMINAL 6" DIAMETER (OR SMALLER) STEEL CONDUIT, NOMINAL 4" DIAMETER (OR SMALLER) STEEL ELECTRICAL METALLIC TUBING, NOMINAL 6" DIAMETER (OR SMALLER) TYPE L (OR HEAVIER) COPPER TUBING OR NOMINAL 1" DIAMETER (OR SMALLER) FLEXIBLE STEEL CONDUIT. WHEN COPPER PIPE IS USED, MAXIMUM F RATING OF FIRESTOP SYSTEM (ITEM 3) IS 2 HOUR. STEEL PIPES OR CONDUITS LARGER THAN NOMINAL 4" DIAMETER MAY ONLY BE USED IN WALLS CONSTRUCTED USING STEEL CHANNEL STUDS. A MAXIMUM OF ONE PIPE OR CONDUIT IS PERMITTED IN THE FIRESTOP SYSTEM. PIPE OR CONDUIT TO BE INSTALLED NEAR CENTER OF STUD CAVITY WIDTH AND TO BE RIGIDLY SUPPORTED ON BOTH SIDES OF WALL ASSEMBLY.
3. FILL, VOID OR CAVITY MATERIAL - CAULK - CAULK FILL MATERIAL INSTALLED TO COMPLETELY FILL ANNULAR SPACE BETWEEN PIPE OR CONDUIT AND GYPSUM WALLBOARD AND WITH A MINIMUM 1/4" DIAMETER BEAD OF CAULK APPLIED TO PERIMETER OF PIPE OR CONDUIT AT ITS EGRESS FROM THE WALL. CAULK INSTALLED SYMMETRICALLY ON BOTH SIDES OF WALL ASSEMBLY. THE HOURLY F RATING OF THE FIRESTOP SYSTEM IS DEPENDENT UPON THE HOURLY FIRE RATING OF THE WALL ASSEMBLY IN WHICH IT IS INSTALLED, AS SHOWN IN THE FOLLOWING TABLE. THE HOURLY T RATING OF THE FIRESTOP SYSTEM IS DEPENDENT UPON THE TYPE OR SIZE OF THE PIPE OR CONDUIT AND THE HOURLY FIRE RATING OF THE WALL ASSEMBLY IN WHICH IT IS INSTALLED, AS TABULATED BELOW:

MAXIMUM PIPE DIAMETER (INCHES)	ANNULAR SPACE (INCHES)	F RATING (HOURS)	T RATING (HOURS)
4	0 - 1-1/2	1 OR 2	0

**PENETRATION DETAIL**  
NOT TO SCALE



**NAMEPLATE DETAIL**  
NOT TO SCALE



McGinniss & Fleming  
Engineering, Inc.

Mechanical · Electrical · Fire Protection · Plumbing

1401 Miccosukee Road - Suite 200  
Tallahassee, Florida 32308

CA #05090

ROOFTOP HVAC REPLACEMENT  
DOYLE CONNER LAB ADMIN BUILDING  
TALLAHASSEE, FLORIDA

FL. DEPT. OF AGRICULTURE &  
CONSUMER SERVICES

DATE:  
November 10, 2017

DESIGNED BY:  
CKF

DRAWN BY:  
TEB

SUBMITTAL:  
CONSTRUCTION DOCUMENTS

SHEET TITLE:  
ELECTRICAL  
DETAILS

SHEET:

**E4.1**

JOB NUMBER:

1712