

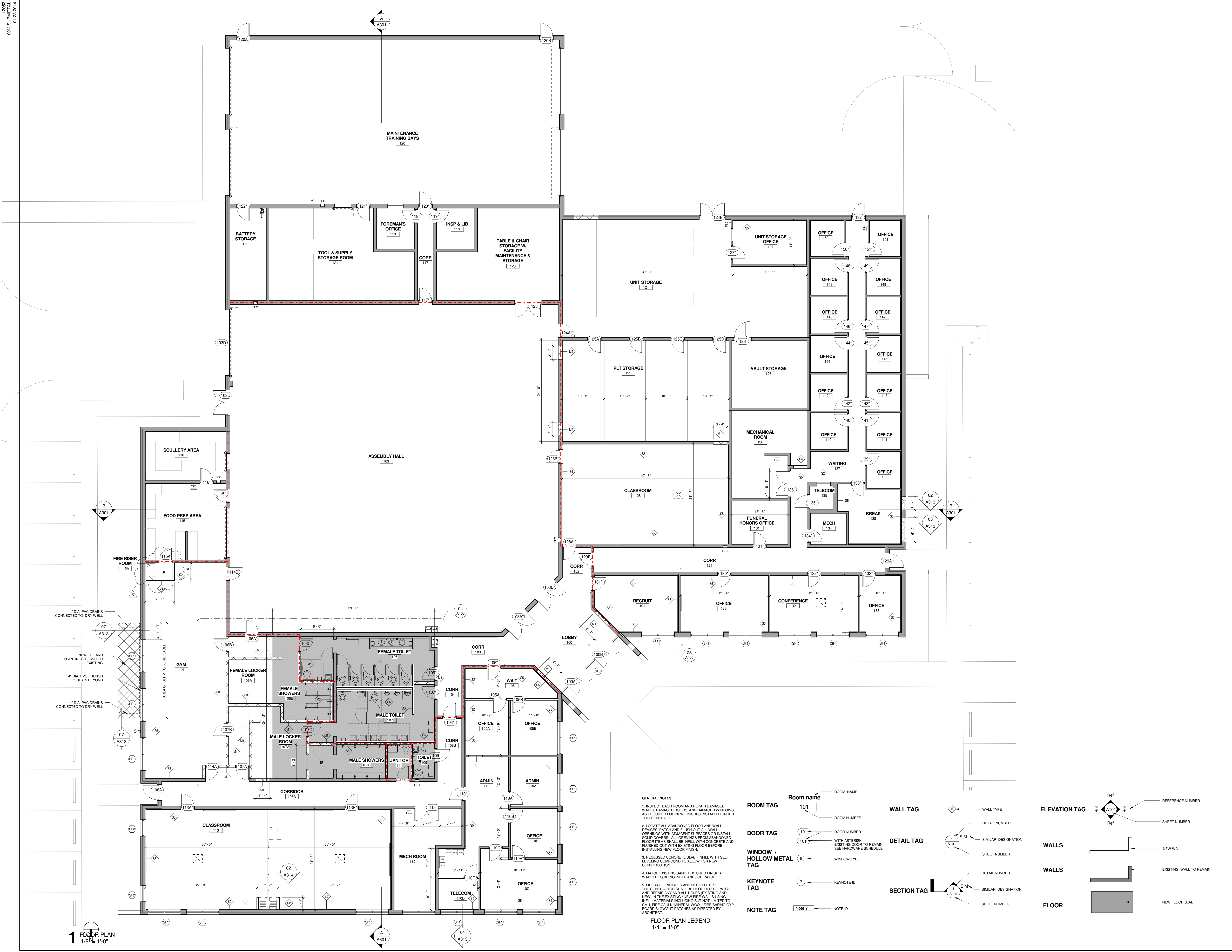
REVISIONS:

No.	Description	Date
1	SFM REVIEW COMMENTS	02.04.2014
3	ADDENDUM #2	Date 3

FLOOR PLAN

Project number	12052
Dated	01.23.2014
PIC	JB
PM	TM
Drawn by	KG
Checked by	TM/JB

A101
Scale As indicated



GENERAL NOTES:

- INSPECT EACH ROOM AND REPAIR DAMAGED WALLS, DAMAGED FLOORS, AND DAMAGED WINDOWS AS REQUIRED FOR NEW FINISHES INSTALLED UNDER THIS CONTRACT.
- LOCATE ALL ABANDONED FLOOR AND WALL DEVICES. PATCH AND FLUSH-OUT ALL WALL OPENINGS WITH ADJACENT SURFACES OR INSTALL SOLID CORNERS. ALL OPENINGS FROM ABANDONED FLOOR ITEMS SHALL BE INFILL WITH CONCRETE AND FLUSHED-OUT WITH EXISTING FLOOR BEFORE INSTALLING NEW FLOOR FINISH.
- RECESSED CONCRETE SLAB - INFILL WITH SELF LEVELING COMPOUND TO ALLOW FOR NEW CONSTRUCTION.
- MATCH EXISTING SAND TEXTURED FINISH AT WALLS REQUIRING INFILL AND/OR PATCH.
- FIRE WALL PATCHES AND DECK FLUTES: THE CONTRACTOR SHALL BE REQUIRED TO PATCH AND REPAIR ANY AND ALL HOLES (EXISTING AND NEW) IN THE EXISTING / NEW FIRE WALLS USING INFILL MATERIALS INCLUDING BUT NOT LIMITED TO CHALK, FIRE CALK, MINERAL WOOL, FIRE SAFING GYP. BOARD BLOWOUT PATCHES AS DIRECTED BY ARCHITECT.

FLOOR PLAN LEGEND
1/4" = 1'-0"

ROOM TAG 101 ROOM NAME

DOOR TAG 101 DOOR NUMBER

WINDOW / HOLLOW METAL TAG 1 WINDOW TYPE

KEYNOTE TAG ? KEYNOTE ID

NOTE TAG Note ? NOTE ID

WALL TAG WALL TYPE

DETAIL TAG 1 SIMILAR DESIGNATION

SECTION TAG 1 SIMILAR DESIGNATION

ELEVATION TAG REFERENCE NUMBER

WALLS NEW WALL

WALLS EXISTING WALL TO REMAIN

FLOOR NEW FLOOR SLAB

1 FLOOR PLAN
1/8" = 1'-0"



MARK	KEYNOTE SCHEDULE DESCRIPTION	MODEL
AP	CEILING ACCESS PANEL	(SEE SPECIFICATIONS)
BC	SHOWER BENCH	BRADLEY LENOX PEDESTAL
DC	DIAPER CHANGING STATION	BRADLEY 662-11
F2	SURFACE MOUNTED FIRE EXTINGUISHER	(SEE SPECIFICATIONS)
GB38	38" GRAB BAR GRAB BAR (LENGTH AS NOTED ON FLOOR PLANS)	BRADLEY 612
GB42	42" GRAB BAR GRAB BAR (LENGTH AS NOTED ON FLOOR PLANS)	BRADLEY 612
MB48	48" MARKER BOARD	PRCELAIN STEEL MAGNETIC MARKER BOARDS
MB96	96" MARKER BOARD	PRCELAIN STEEL MAGNETIC MARKER BOARD
MH	MOP HOLDER	9954 BraxEX
MR1	MIRROR w/ SHELF (RELOCATED MIRRORS FROM THE SAME SPACE)	-
MR2	MIRROR	BRADLEY 760 24Wx36H
PR1	CEILING MOUNTED PROJECTOR	(PROVIDE BY OWNER)
PR2	CEILING MOUNTED PROJECTOR SHELF	DA-LITE CPM-1281 ADVANCE CEILING PROJECTOR SHELF MOUNT w/ 1 1/2" DIA. PIPE
PS	CEILING MOUNTED PROJECTION SCREEN	DA-LITE - 85656-WHITE
PT	PAPER TOWEL DISPENSOR	(FIELD VERIFY MATCH EXISTING)
RH	ROBE HOOK	BRADLEY 6114
SG	STORAGE CAGE	WELDED WIRE MESH
SND	SANITARY NAPKIN DISPOSER	BRADLEY 4781-15
SPO	SOAP DISPENSOR	BRADLEY 6562
TH	TOILET PAPER DISPENSOR	(FIELD VERIFY MATCH EXISTING)
WF	WATER FOUNTAIN	(SEE PLUMBING)
WP	WALL PARTITION	ACOUSTICAL MODERN FOLD OPERABLE PARTITION

dag
DAG ARCHITECTS INC.
612 SOUTH COPELAND STREET,
TALLAHASSEE, FL 32304
(T) 850-656-7506 (F) 850-656-3618
FL# AA-C000745
www.DAGarchitects.com

ALL REPORTS, PLANS, SPECIFICATIONS, COMPUTER FILES, FIELD DATA, NOTES AND OTHER DOCUMENTS AND REQUIREMENTS PREPARED BY THE CONSULTANT AS AN INSTRUMENT OF SERVICES SHALL REMAIN THE PROPERTY OF THE CONSULTANT. THE CONSULTANT SHALL RETAIN ALL COMMON LAW STATUTORY AND OTHER RESERVED RIGHTS INCLUDING THE COPYRIGHT THEREIN.

J Michael Rutland
JMR Architecture, PC
60 Commerce Street
Suite 1520
P.O. Box 1706
Montgomery, AL 36104
Phone: (334) 420-5672
Fax: (334) 420-5692

100% SUBMITTAL

DMA PROJECT NO. 12212061
RENOVATION -
QUINCY NATIONAL GUARD ARMORY
2049 Pat Thomas Pkwy Quincy, FL 32351

DRAWING SEAL:

No.	Description	Date
2	ADDENDUM #1	02.05.2014
3	ADDENDUM #2	Date 3

FINISH FLOOR PLAN

Project number	12052
Dated	01.23.2014
PIC	Approver
PM	Designer
Drawn by	Author
Checked by	Checker

A102
Scale 1/8" = 1'-0"

MATERIAL LEGEND

RTT		RUBBER MATT OVER SEALED CONCRETE	EPT		EPOXY PAINTED CONCRETE FLOORS
VCT		12" X 12" VINYL COMPOSITION TILE			
T-1		CERAMIC FLOOR TILE			
CT-1		CARPET TILE FIELD COLOR	CT-2		CARPET TILE ACCENT COLOR
WM		10'-0" WALK OFF MATT			

GENERAL NOTES

- EPOXY PAINT ON WALLS AND GYP. CEILINGS IN ALL KITCHEN BATHROOM AND CLEANING AREAS.
- EXISTING TERRAZZO FLOORING.
- SEAL ALL EXPOSED CONCRETE FLOORS.
- NO CUTTING OR DAMAGING EXISTING TERRAZZO FLOORING.
- FURNITURE NOT IN CONTRACT.
- DO NOT PAINT. VAULT DOOR IN ROOM 126.
- T-4 TILE BASE WERE NEW CONSTRUCTION DAMAGES EXISTING TILE BASE.

FFE LEGEND
1/8" = 1'-0"

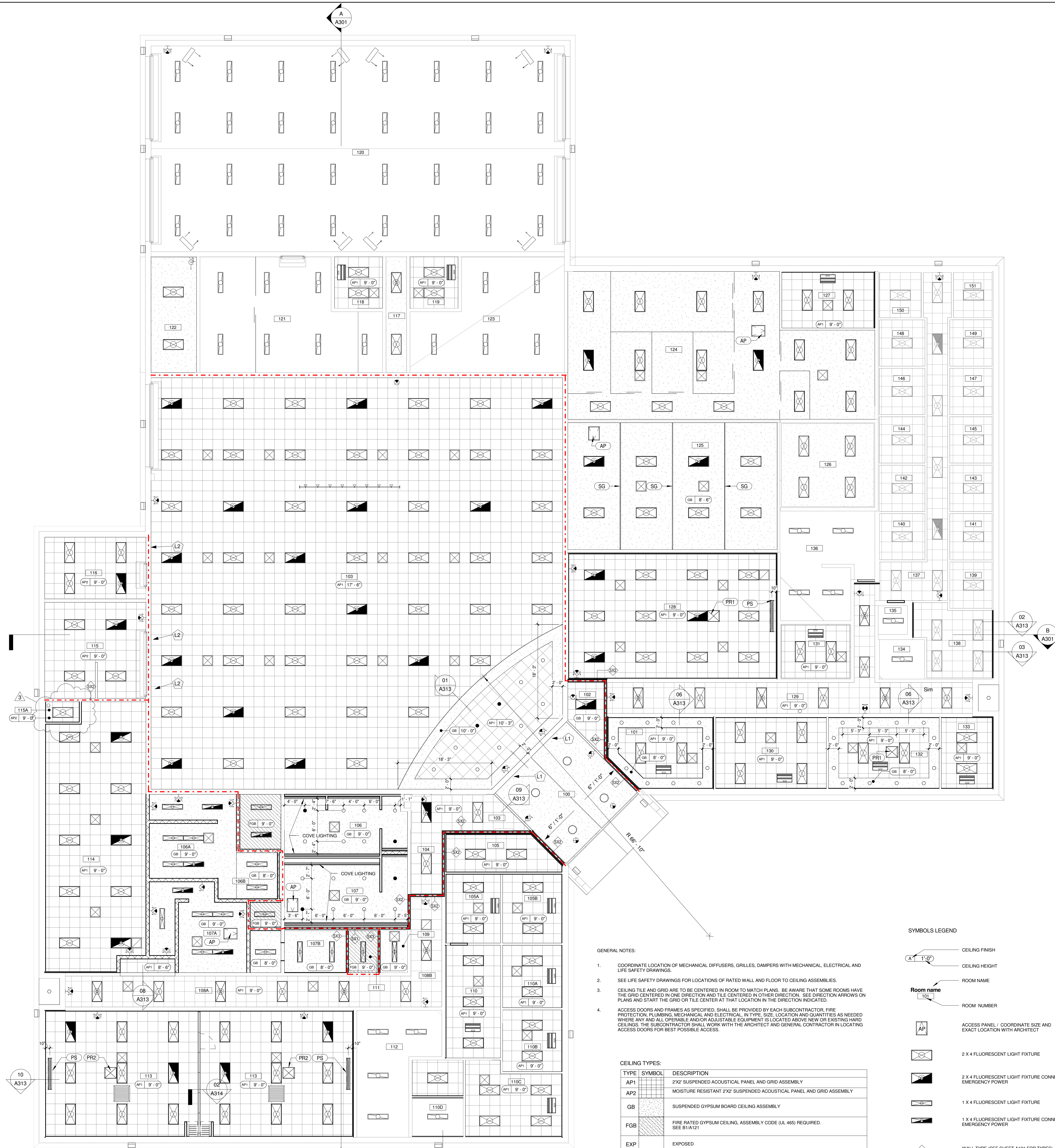
SYMBOLS LEGEND

	KEYNOTE SYMBOL		WALL MOUNTED FIRE EXTINGUISHER CABINET
	FURNITURE OR OBJECTS NOT IN CONTRACT		SEMI-RECESSED FIRE EXTINGUISHER CABINET
	CASEWORK OR OBJECTS IN CONTRACT		SIGNAGE TYPE
	DOOR NUMBER		DOOR NUMBER WITH ASTERISK - EXISTING DOOR TO REMAIN

ROOM LEGEND

FLOOR / BASE	WALLS	CEILING TYPE
A. VINYL COMPOSITION TILE / RUBBER BASE	1. PAINTED	Z. SUSPENDED 2x2 ACOUSTICAL PANEL
B. CERAMIC TILE / TILE BASE	2. EPOXY PAINTED	Y. SUSPENDED PAINTED GYPSUM BOARD
C. SEALED CONCRETE	3. FULL HEIGHT TILE	X. SUSPENDED 2x2 MOISTURE RESISTANT CEILING PANEL
D. RUBBER MATT OVER SEALED CONCRETE / RUBBER BASE	4. TILE WANSICOT	W. EXPOSED STRUCTURE
E. CARPET TILE / RUBBER BASE		V. PAINT
F. EPOXY PAINT		

1 FLOOR PLAN
1/8" = 1'-0"



MARK	DESCRIPTION	MODEL
AP	CEILING ACCESS PANEL	(SEE SPECIFICATIONS)
BC	SHOWER BENCH	BRADLEY LENOX PEDESTAL
DC	DWAFER CHANGING STATION	BRADLEY 862-11
F2	SURFACE MOUNTED FIRE EXTINGUISHER	(SEE SPECIFICATIONS)
GB88	36" GRAB BAR GRAB BAR (LENGTH AS NOTED ON FLOOR PLANS)	BRADLEY 812
GB42	42" GRAB BAR GRAB BAR (LENGTH AS NOTED ON FLOOR PLANS)	BRADLEY 812
MB48	48" MARKER BOARD	PRCELAIN STEEL MAGNETIC MARKER BOARDS
MB66	66" MARKER BOARD	PRCELAIN STEEL MAGNETIC MARKER BOARD
MH	MOP HOLDER	9954 BRUEX
MR1	MIRROR w/ SHELF (RELOCATED MIRRORS FROM THE SAME SPACE)	-
MR2	MIRROR	BRADLEY 780 24W30H
PR1	CEILING MOUNTED PROJECTOR	(PROVIDE BY OWNER)
PR2	CEILING MOUNTED PROJECTOR SHELF	DA LITE ORN 1281 ADVANCE CEILING PROJECTOR SHELF MOUNT w/ 1/2" DIA. PIPE
PS	CEILING MOUNTED PROJECTION SCREEN	DA LITE - 85656-WHITE
PT	PAPER TOWEL DISPENSOR	(FIELD VERIFY MATCH EXISTING)
RH	ROBE HOOK	BRADLEY 814
SG	STORAGE CAGE	WELDED WIRE MESH
SND	SANITARY NAPKIN DISPOSER	BRADLEY 4781-15
SFD	SOAP DISPENSER	BRADLEY 6862
TH	TOILET PAPER DISPENSOR	(FIELD VERIFY MATCH EXISTING)
WF	WATER FOUNTAIN	(SEE PLUMBING)
WP	WALL PARTITION	ACOUSTICAL MODERN FOLD OPERABLE PARTITION

dag
DAG ARCHITECTS INC.
 612 SOUTH COPELAND STREET,
 TALLAHASSEE, FL 32304
 (T) 850-656-7506 (F) 850-656-9818
 FL# AA-C000745
 www.DAGarchitects.com

ALL REPORTS, PLANS, SPECIFICATIONS, COMPUTER FILES, FIELD DATA, NOTES AND OTHER DOCUMENTS AND REQUIREMENTS PREPARED BY THE CONSULTANT AS AN INSTRUMENT OF SERVICES SHALL REMAIN THE PROPERTY OF THE CONSULTANT. THE CONSULTANT SHALL RETAIN ALL COMMON LAW STATUTORY AND OTHER RESERVED RIGHTS INCLUDING THE COPYRIGHT THEREIN.

ALL PLANS CONTAINED HEREIN ARE CONFIDENTIAL AND EXEMPT FROM PUBLIC INSPECTION OR REPRODUCTION PURSUANT TO SECTION 119.17(3)(b), FLORIDA STATUTES.

J Michael Rutland
JMR Architecture, PC
 60 Commerce Street
 Suite 1520
 P.O. Box 1706
 Montgomery, AL
 36104
 Phone: (334) 420-5672
 Fax: (334) 420-5692

100% SUBMITTAL

DMA PROJECT NO. 12212061
RENOVATION -
QUINCY NATIONAL GUARD ARMORY
 2049 Pat Thomas Pkwy Quincy, FL 32351

DRAWING SEAL:

REVISIONS:		
No.	Description	Date
1	SFM REVIEW COMMENTS	02.04.2014
3	ADDENDUM #2	Date 3

REFLECTED CEILING PLAN

Project number	12052
Dated	01.23.2014
PIC	Approver
PM	Designer
Drawn by	Author
Checked by	Checker

A103
 Scale 1/8" = 1'-0"

- GENERAL NOTES:**
- COORDINATE LOCATION OF MECHANICAL DIFFUSERS, GRILLES, DAMPERS WITH MECHANICAL, ELECTRICAL AND LIFE SAFETY DRAWINGS.
 - SEE LIFE SAFETY DRAWINGS FOR LOCATIONS OF RATED WALL AND FLOOR TO CEILING ASSEMBLIES.
 - CEILING TILE AND GRID ARE TO BE CENTERED IN ROOM TO MATCH PLANS. BE AWARE THAT SOME ROOMS HAVE THE GRID CENTERED IN ONE DIRECTION AND TILE CENTERED IN OTHER DIRECTION. SEE DIRECTION ARROWS ON PLANS AND START THE GRID OR TILE CENTER AT THAT LOCATION IN THE DIRECTION INDICATED.
 - ACCESS DOORS AND FRAMES AS SPECIFIED. SHALL BE PROVIDED BY EACH SUBCONTRACTOR. FIRE PROTECTION, PLUMBING, MECHANICAL AND ELECTRICAL, IN TYPE, SIZE, LOCATION AND QUANTITIES AS NEEDED WHERE ANY AND ALL OPERABLE AND/OR ADJUSTABLE EQUIPMENT IS LOCATED ABOVE NEW OR EXISTING HARD CEILINGS. THE SUBCONTRACTOR SHALL WORK WITH THE ARCHITECT AND GENERAL CONTRACTOR IN LOCATING ACCESS DOORS FOR BEST POSSIBLE ACCESS.

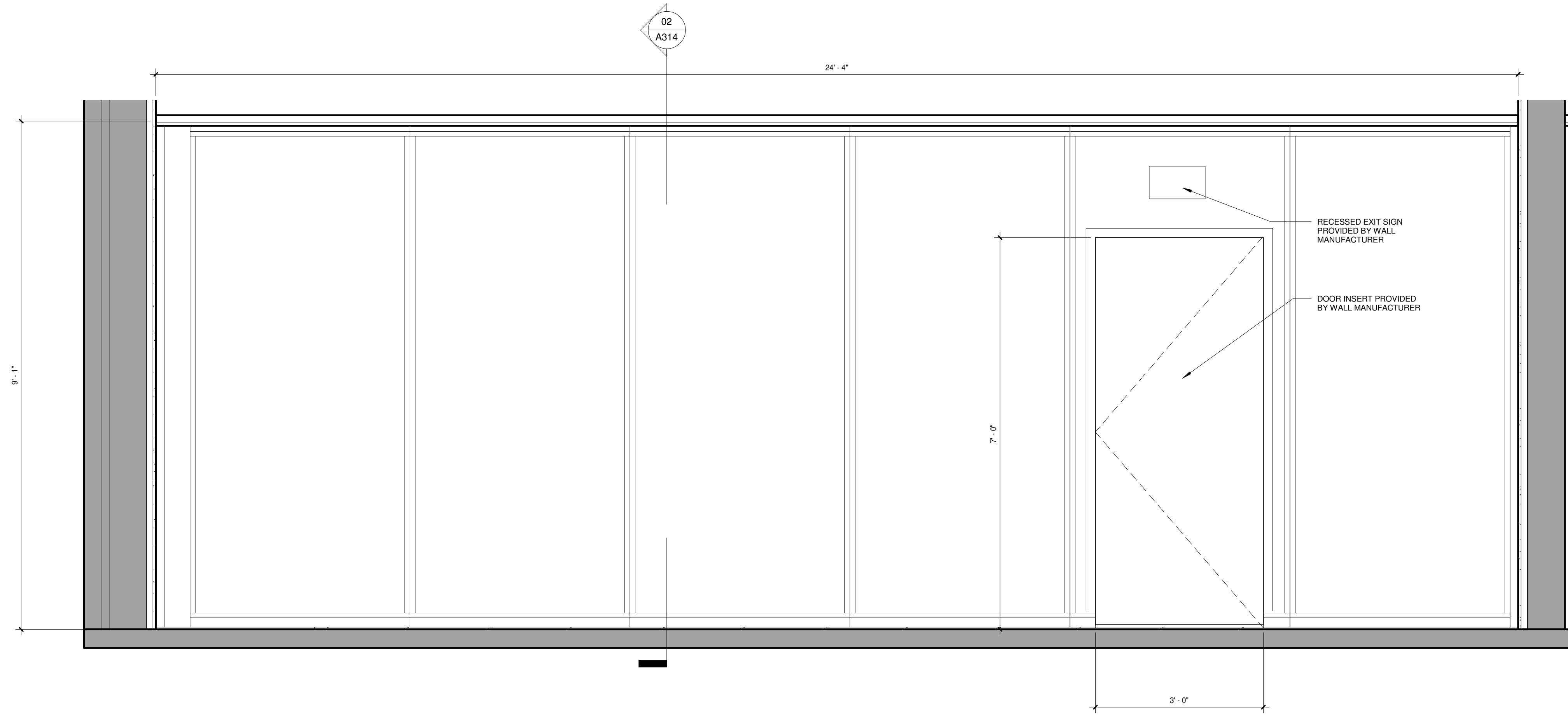
CEILING TYPES:

TYPE	SYMBOL	DESCRIPTION
AP1	[Symbol]	2'X2' SUSPENDED ACOUSTICAL PANEL AND GRID ASSEMBLY
AP2	[Symbol]	MOISTURE RESISTANT 2'X2' SUSPENDED ACOUSTICAL PANEL AND GRID ASSEMBLY
GB	[Symbol]	SUSPENDED GYPSUM BOARD CEILING ASSEMBLY
FGB	[Symbol]	FIRE RATED GYPSUM CEILING, ASSEMBLY CODE (UL 465) REQUIRED. SEE B1A121
EXP	[Symbol]	EXPOSED

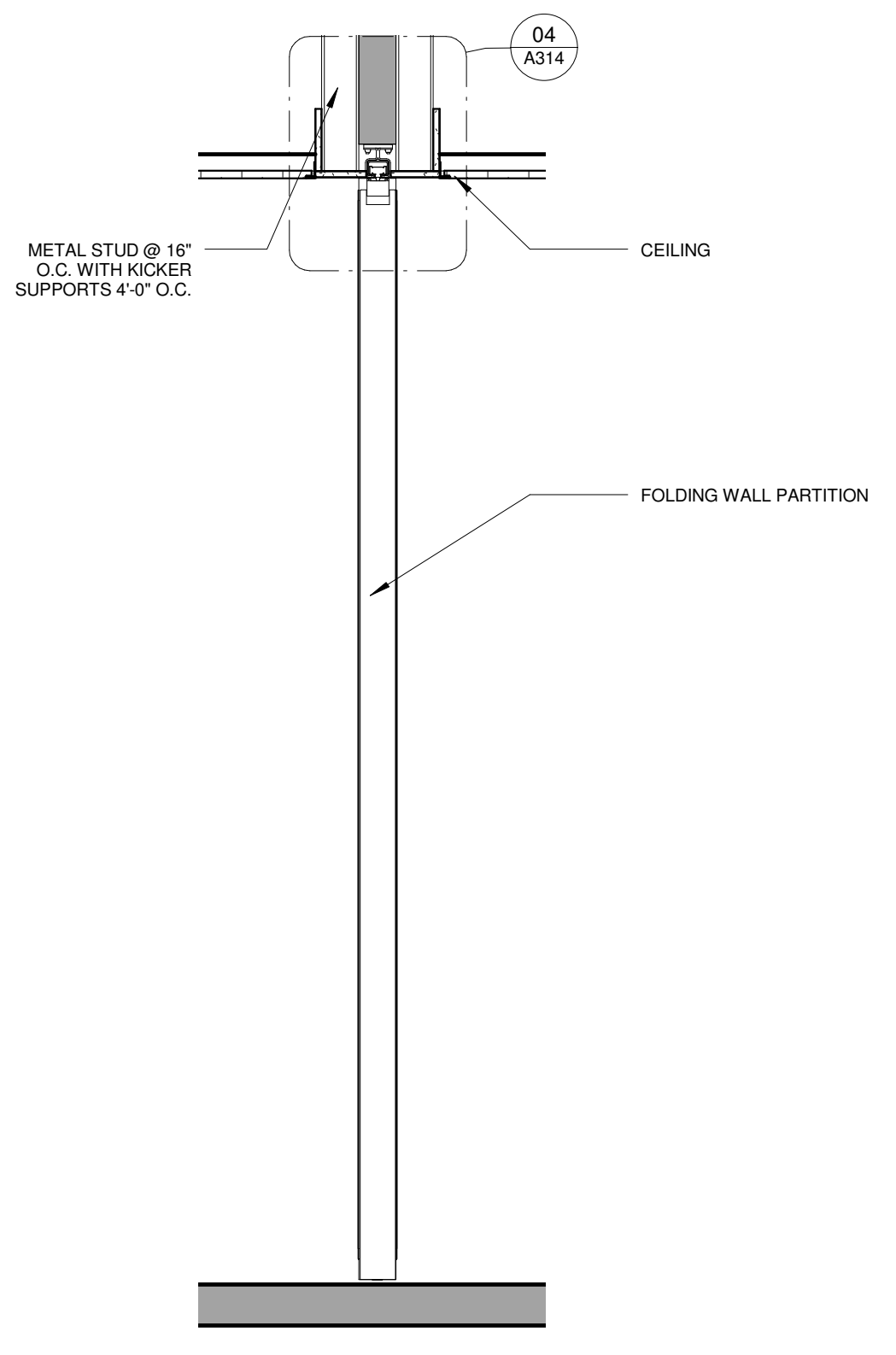
REFLECTED CEILING LEGEND
 1/8" = 1'-0"

SYMBOLS LEGEND

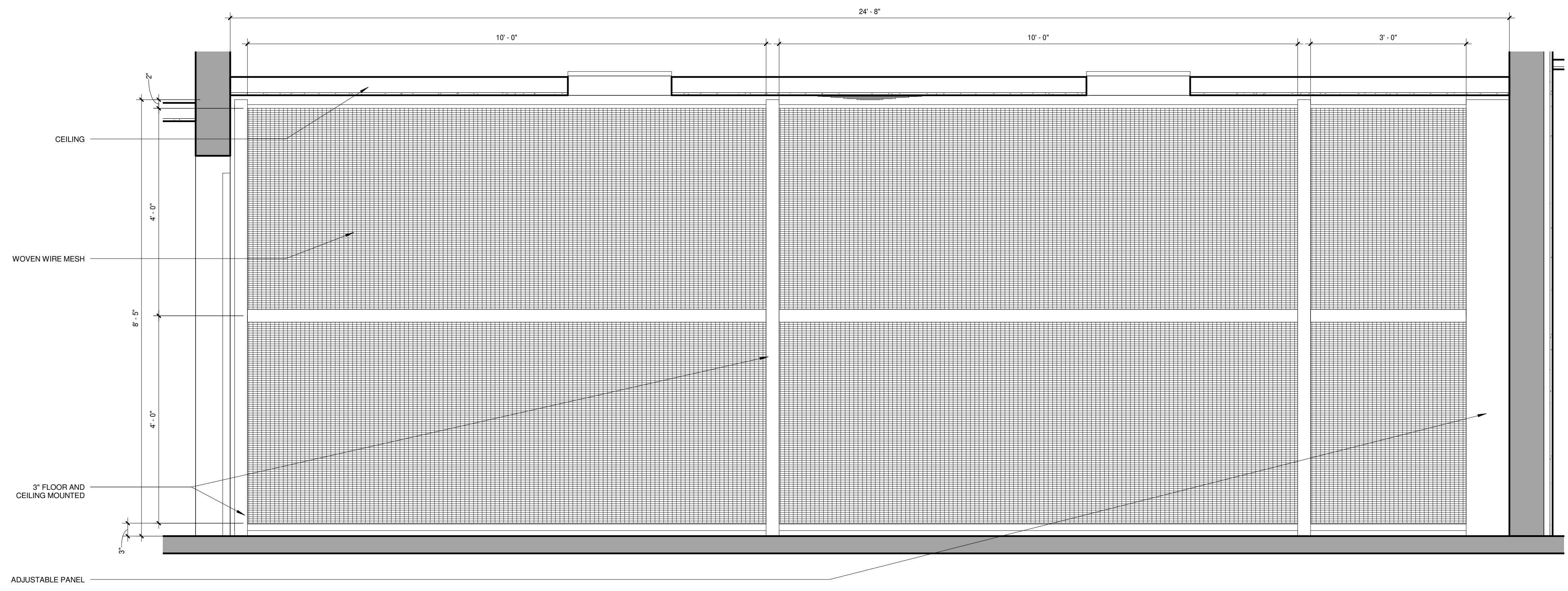
[Symbol]	CEILING FINISH	[Symbol]	WALL MOUNTED EXTERIOR LIGHT FIXTURE	[Symbol]	CEILING MOUNTED CASSETTE
[Symbol]	CEILING HEIGHT	[Symbol]	EXISTING 2 X 4 FLUORESCENT LIGHT FIXTURE	[Symbol]	CEILING MOUNTED CASSETTE
[Symbol]	ROOM NAME	[Symbol]	EXISTING 2 X 4 FLUORESCENT LIGHT FIXTURE CONNECTED TO EMERGENCY POWER	[Symbol]	CEILING MOUNTED TRACK LIGHTING
[Symbol]	ROOM NUMBER	[Symbol]	EXISTING 1 X 4 FLUORESCENT LIGHT FIXTURE	[Symbol]	CEILING MOUNTED PROJECTOR
[Symbol]	ACCESS PANEL / COORDINATE SIZE AND EXACT LOCATION WITH ARCHITECT	[Symbol]	CEILING RECESSED PROJECTION SCREEN (SUPPLIED BY OWNER INSTALL BY CONTRACTOR)	[Symbol]	EXTERIOR WALL MOUNTED LIGHT FIXTURE
[Symbol]	2 X 4 FLUORESCENT LIGHT FIXTURE	[Symbol]	CEILING MOUNTED EXIT LUMINAIRE	[Symbol]	RETURN AIR
[Symbol]	2 X 4 FLUORESCENT LIGHT FIXTURE CONNECTED TO EMERGENCY POWER	[Symbol]	ER DOWN LIGHTING	[Symbol]	SUPPLY AIR
[Symbol]	1 X 4 FLUORESCENT LIGHT FIXTURE	[Symbol]	DOWN LIGHTING	[Symbol]	WALL MOUNTED CLOCK
[Symbol]	1 X 4 FLUORESCENT LIGHT FIXTURE CONNECTED TO EMERGENCY POWER	[Symbol]	SUSPENDED HEATERS (SEE MECHANICAL FOR MOUNTING HEIGHT)		
[Symbol]	WALL TYPE (SEE SHEET A121 FOR TYPES)				



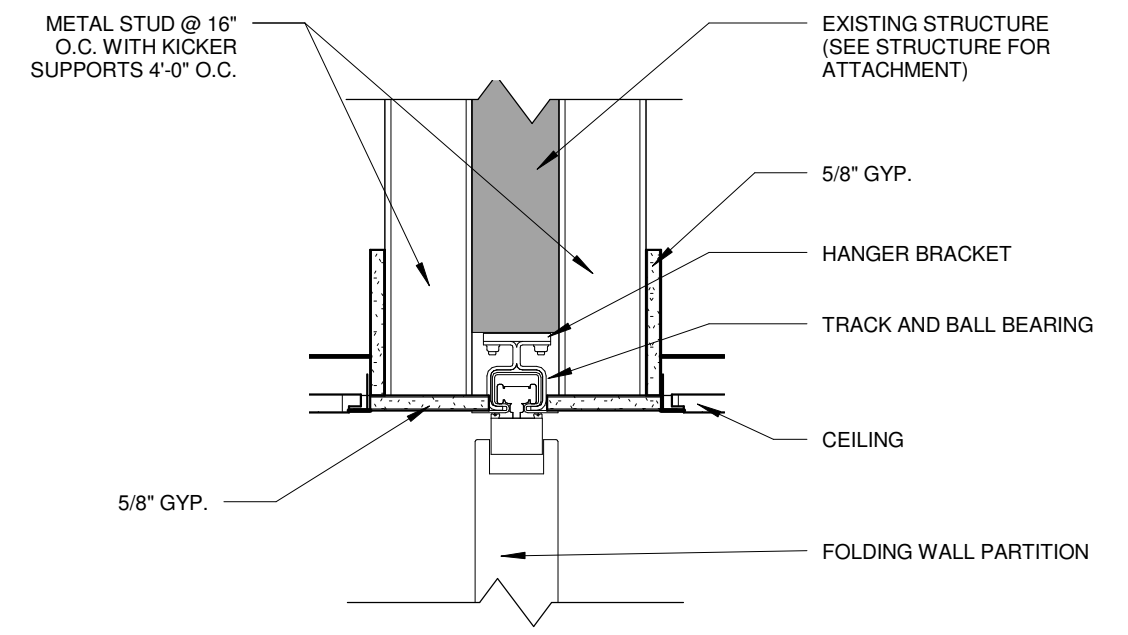
01 FOLDING PARTITION WALL
3/4" = 1'-0"



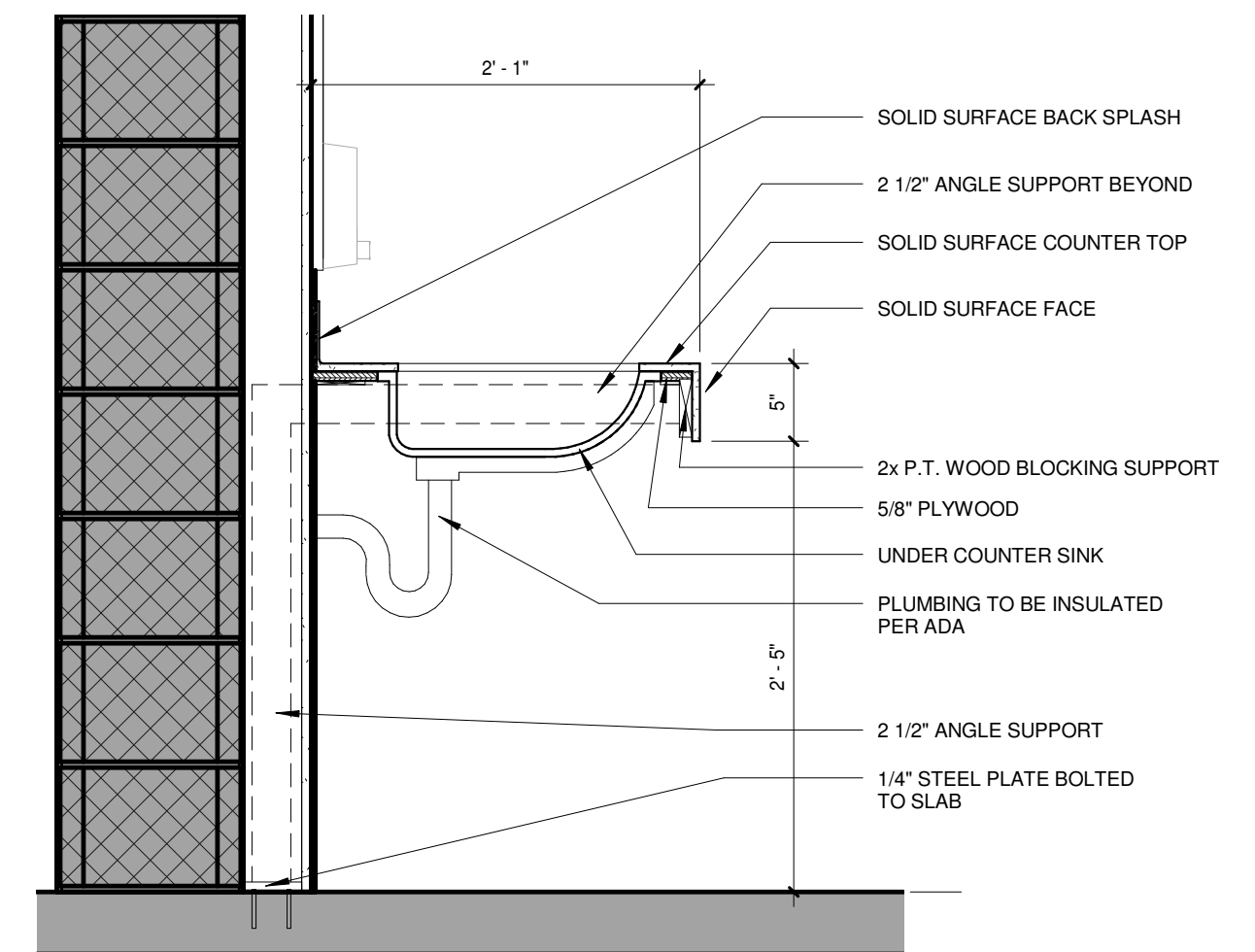
02 WALL SECTION
3/4" = 1'-0"



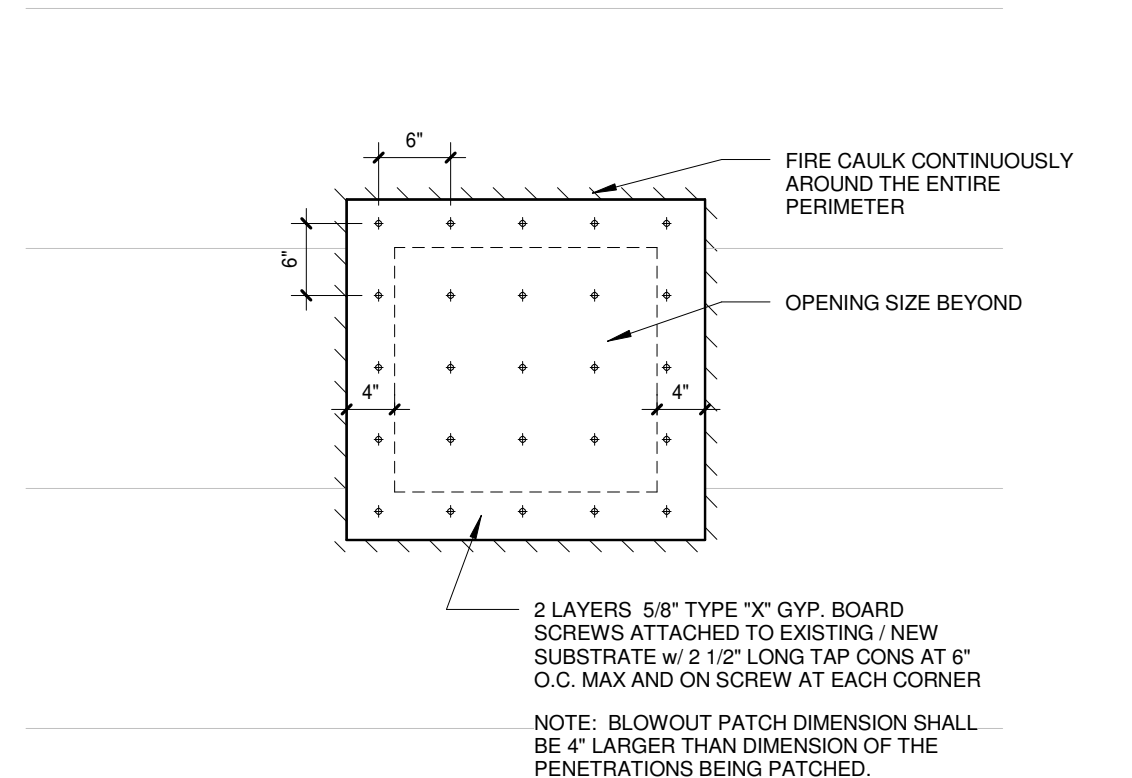
03 FENCE ELEVATION
3/4" = 1'-0"



04 FOLDING PARTITION WALL DETAIL
1 1/2" = 1'-0"



05 SINK SECTION
1" = 1'-0"



06 BLOW OUT PATCH
3/4" = 1'-0"



DAG ARCHITECTS INC.
812 SOUTH COPELAND STREET,
TALLAHASSEE, FL 32304
(T) 850-656-7506 (F) 850-656-3618
FL# AA-C000745
WWW.DAGarchitects.com

OWNER'S SERVICE
ALL REPORTS, PLANS, SPECIFICATIONS, COMPUTER FILES, FIELD DATA, NOTES AND OTHER DOCUMENTS AND INSTRUMENTS PREPARED BY THE CONSULTANT AS AN INSTRUMENT OF SERVICES SHALL REMAIN THE PROPERTY OF THE CONSULTANT. THE CONSULTANT SHALL RETAIN ALL COMMON LAW, STATUTORY AND OTHER RESERVED RIGHTS INCLUDING THE COPYRIGHT THEREIN.
ALL PLANS CONTAINED HEREIN ARE CONFIDENTIAL AND EXEMPT FROM PUBLIC INSPECTION OR DISCLOSURE PURSUANT TO SECTION 119.07(1)(B), FLORIDA STATUTES.

J Michael Rutland
JMR Architecture, PC
60 Commerce Street
Suite 1520
P.O. Box 1706
Montgomery, AL 36104
Phone: (334) 420-5672
Fax: (334) 420-5692

100% SUBMITTAL

DMA PROJECT NO. 12212061
RENOVATION -
QUINCY NATIONAL GUARD ARMORY
2049 Pat Thomas Pkwy Quincy, FL 32351

DRAWING SEAL:

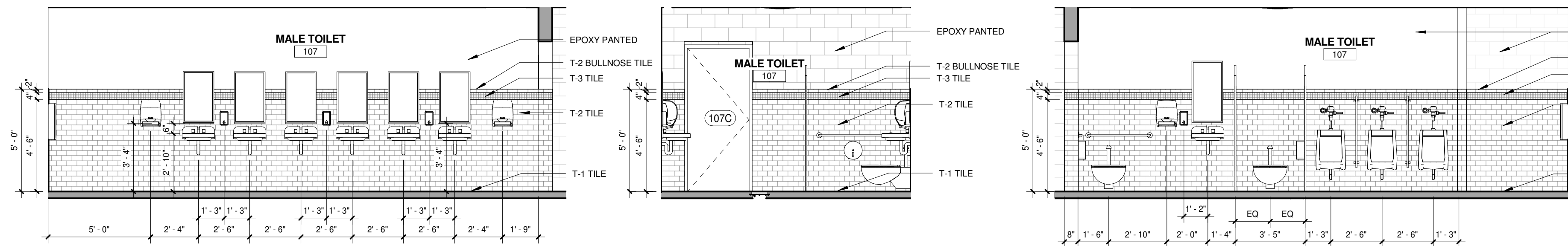
REVISIONS:

No.	Description	Date
3	ADDENDUM #2	Date 3

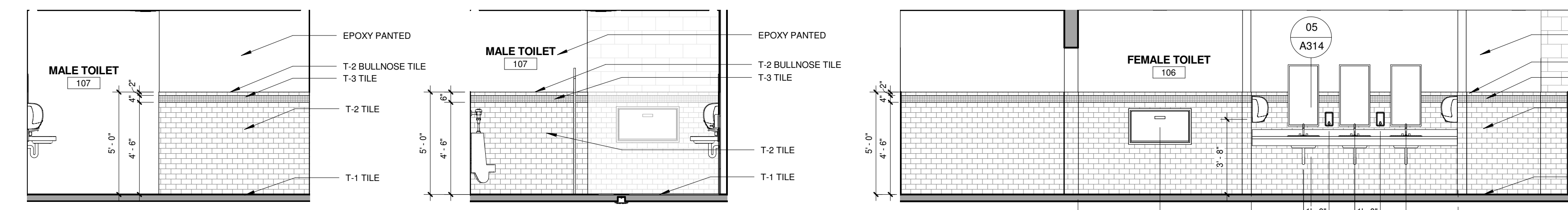
DETAILS

Project number	12052
Dated	01.23.2014
PIC	Approver
PM	Designer
Drawn by	Author
Checked by	Checker

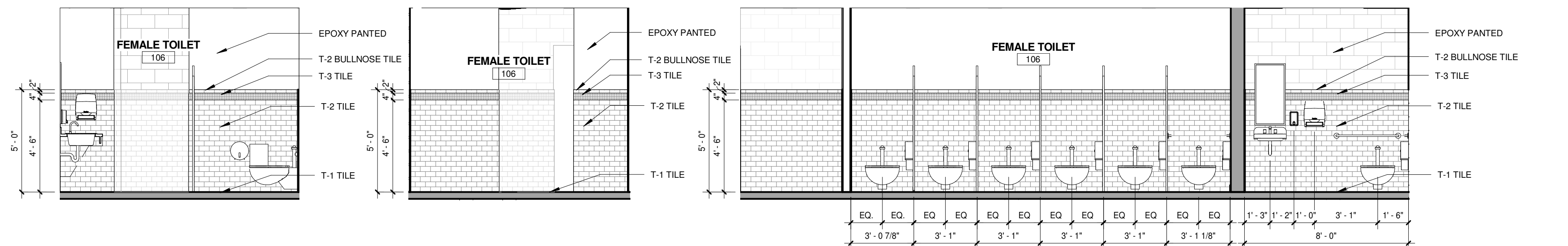
A314
Scale As indicated



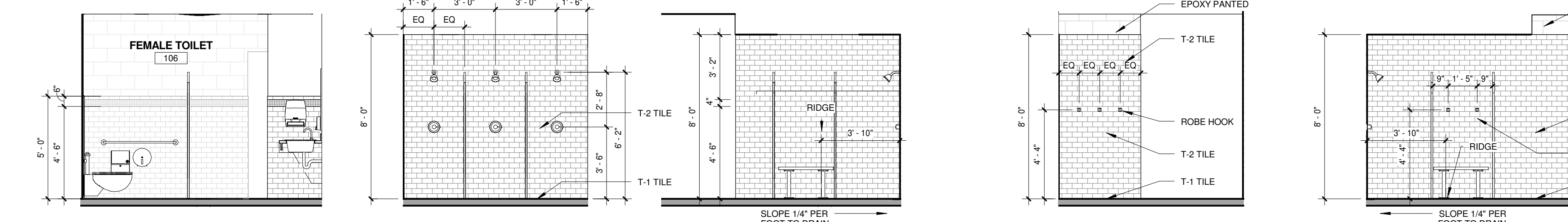
01 INTERIOR ELEVATION 1/4" = 1'-0"
02 INTERIOR ELEVATION 1/4" = 1'-0"
03 INTERIOR ELEVATION 1/4" = 1'-0"



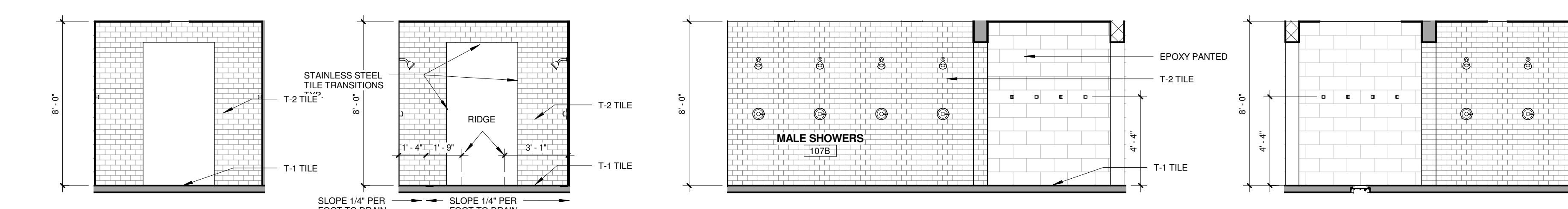
05 INTERIOR ELEVATION 1/4" = 1'-0"
06 INTERIOR ELEVATION 1/4" = 1'-0"



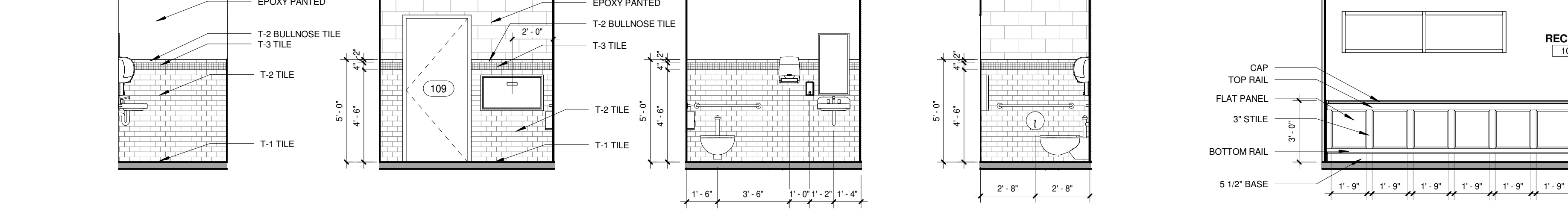
07 INTERIOR ELEVATION 1/4" = 1'-0"
08 INTERIOR ELEVATION 1/4" = 1'-0"



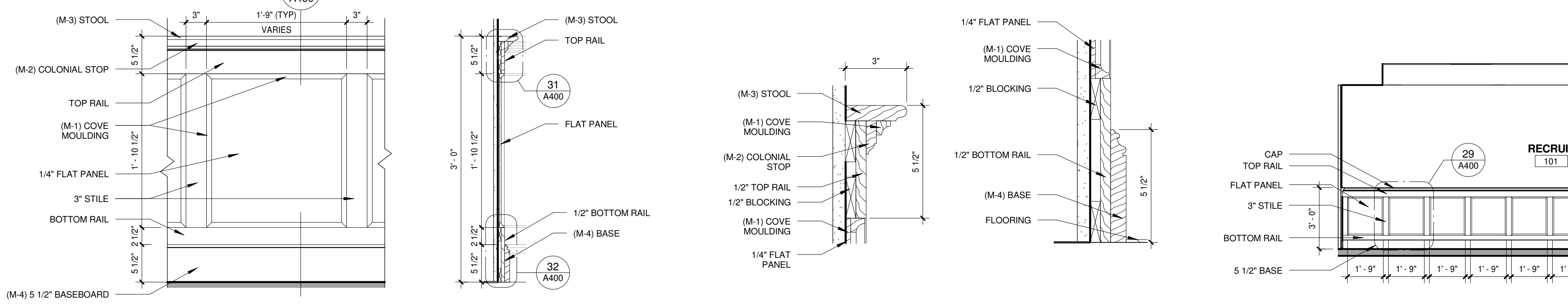
09 INTERIOR ELEVATION 1/4" = 1'-0"
10 INTERIOR ELEVATION 1/4" = 1'-0"



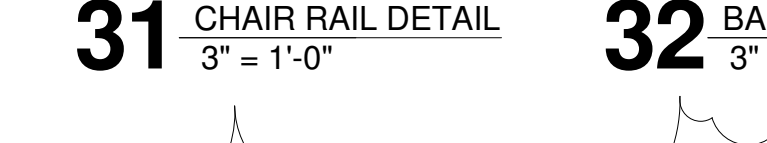
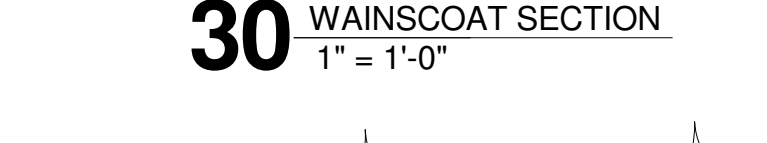
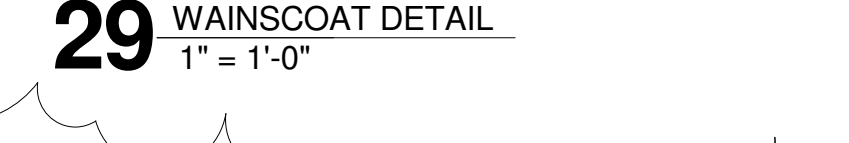
11 INTERIOR ELEVATION 1/4" = 1'-0"
12 INTERIOR ELEVATION 1/4" = 1'-0"
13 INTERIOR ELEVATION 1/4" = 1'-0"
14 INTERIOR ELEVATION 1/4" = 1'-0"
15 INTERIOR ELEVATION 1/4" = 1'-0"



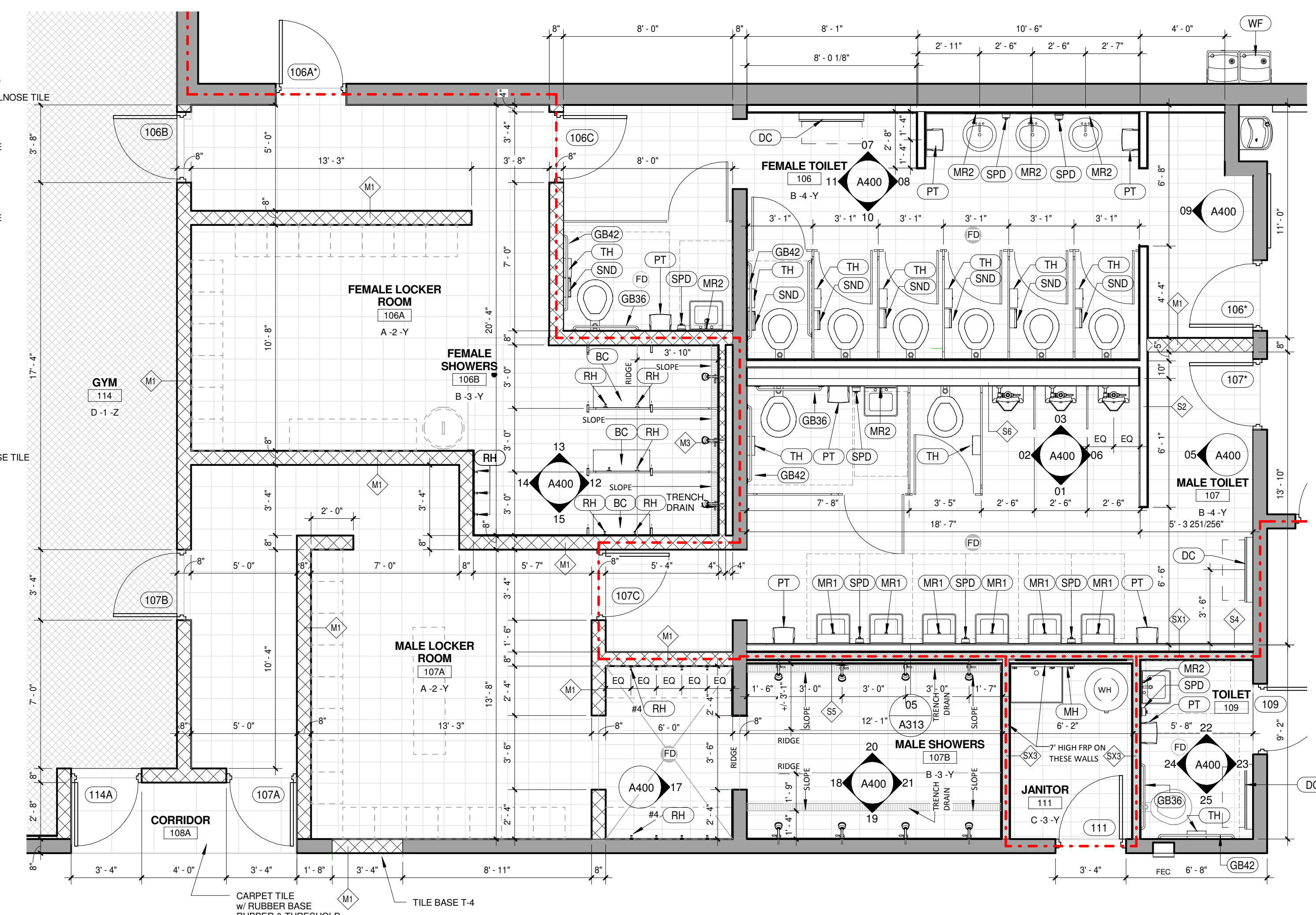
17 INTERIOR ELEVATION 1/4" = 1'-0"
18 INTERIOR ELEVATION 1/4" = 1'-0"
19 INTERIOR ELEVATION 1/4" = 1'-0"
20 INTERIOR ELEVATION 1/4" = 1'-0"
21 INTERIOR ELEVATION 1/4" = 1'-0"



22 INTERIOR ELEVATION 1/4" = 1'-0"
23 INTERIOR ELEVATION 1/4" = 1'-0"
24 INTERIOR ELEVATION 1/4" = 1'-0"
25 INTERIOR ELEVATION 1/4" = 1'-0"
26 INTERIOR ELEVATION 1/4" = 1'-0"
27 INTERIOR ELEVATION 1/4" = 1'-0"
28 05-02-(EL) Recruit office 1/4" = 1'-0"



29 WAINSCOT DETAIL 1" = 1'-0"
30 WAINSCOT SECTION 1" = 1'-0"
31 CHAIR RAIL DETAIL 3" = 1'-0"
32 BASE DETAIL 3" = 1'-0"



04 ENLARGED BATHROOM PLANS 1/4" = 1'-0"

MARK	DESCRIPTION	MODEL
AP	CEILING ACCESS PANEL	(SEE SPECIFICATIONS)
BC	SHOWER BENCH	BRADLEY LENOX PEDESTAL
DC	DIAPER CHANGING STATION	BRADLEY 965-11
F2	SURFACE MOUNTED FIRE EXTINGUISHER	(SEE SPECIFICATIONS)
GB36	36" GRAB BAR GRAB BAR (LENGTH AS NOTED ON FLOOR PLANS)	BRADLEY 812
GB42	42" GRAB BAR GRAB BAR (LENGTH AS NOTED ON FLOOR PLANS)	BRADLEY 812
MB48	48" MARKER BOARD	PRICELAN STEEL MAGNETIC MARKER BOARD
MB96	96" MARKER BOARD	PRICELAN STEEL MAGNETIC MARKER BOARD
MH	MOP HOLDER	5054 BRADLEY
MR1	MIRROR w/ SHELF (RELOCATED MIRRORS FROM THE SAME SPACE)	
MR2	MIRROR	BRADLEY 780 24W/36H
PR1	CEILING MOUNTED PROJECTOR	(PROVIDE BY OWNER)
PR2	CEILING MOUNTED PROJECTOR SHELF	DA LITE QPM 120 ADVANCE CEILING PROJECTOR SHELF MOUNT w/ 1/2" DIA. PIPE
PS	CEILING MOUNTED PROJECTION SCREEN	DA LITE - R656 WHITE
PT	PAPER TOWEL DISPENSER	(FIELD VERIFY MATCH EXISTING)
RH	ROBE HOOK	BRADLEY 9114
SG	STORAGE CAGE	WELDED WIRE MESH
SND	SANITARY NAPKIN DISPOSER	BRADLEY 4781-15
SPD	SOAP DISPENSER	BRADLEY 6562
TH	TOILET PAPER DISPENSER	(FIELD VERIFY MATCH EXISTING)
WF	WATER FOUNTAIN	(SEE PLUMBING)
WP	WALL PARTITION	ACOUSTIC/SEAL MODERN FOLD OPERABLE PARTITION

GENERAL NOTE:
1. BATHROOM TILE - AT OUTSIDE CORNERS ALL 90 DEG. VERTICAL TILE TRANSITIONS THERE SHALL BE A STAINLESS STEEL TILE TRIM.
2. PROVIDE RUST RESISTANT SHOWER CADDY AT EVERY SHOWER HEAD.

100% SUBMITTAL

DRAWING SEAL:

No.	Description	Date
3	ADDENDUM #2	Date 3

ENLARGED FLOOR PLANS AND INTERIOR ELEVATIONS

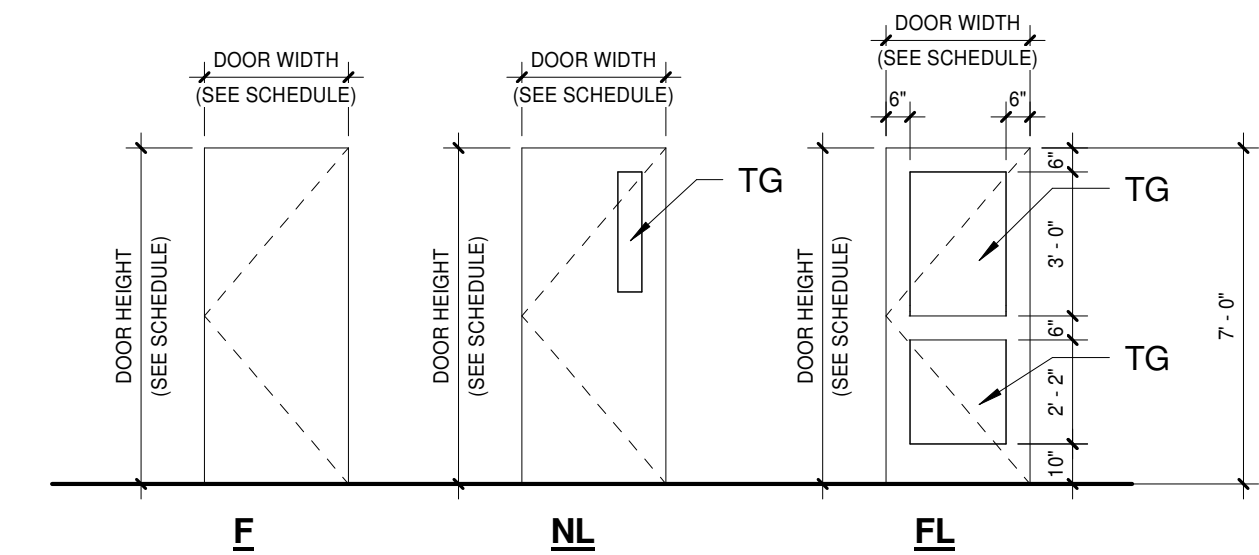
Project number	12052
Dated	01.23.2014
PIC	Approver
PM	Designer
Drawn by	Author
Checked by	Checker

A400
Scale As indicated

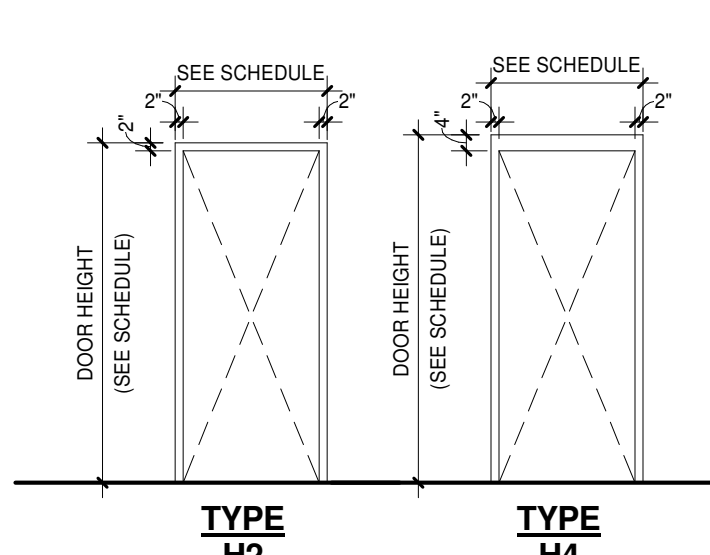
DOOR SCHEDULE													
Door No.	Door Type	Door Material	Width	Height	Thickness	Frame		Details		Fire Rating	Comments	Alt #	Notes
						Type	Material	Head Detail	Jamb Detail				
100A	2(F)	GHM	6'-0"	7'-0"	1 1/4"	SF3	GHM	08A501	08A501	12A501		(ALT # 4)	
100B	2(F)	GHM	6'-0"	7'-0"	1 3/4"	SF3	GHM	08A501	08A501	12A501		(ALT # 4)	
100C	2(F)	MTL	6'-0"	7'-0"	1 3/4"								EXISTING FRAME TO REMAIN
105A	NL	MTL	3'-0"	7'-0"	1 3/4"	H2	HM	02A501	02A501	10A501			EXISTING RELOCATED DOOR
105B	NL	MTL	3'-0"	7'-0"	1 3/4"	H2	HM	05A501	06A501	09A501			EXISTING RELOCATED DOOR
106A	F	MTL	3'-0"	7'-0"	1 3/4"	H4	HM	05A501	06A501	09A501	45		
106C	F	MTL	3'-0"	7'-0"	1 3/4"	H4	HM	05A501	06A501	09A501	45		
107A	F	MTL	3'-0"	7'-0"	1 3/4"	H4	HM	05A501	06A501	09A501	45		
107C	F	MTL	3'-0"	7'-0"	1 3/4"	H4	HM	05A501	06A501	09A501	45		
108A	F	GHM	3'-6"	7'-0"	1 3/4"	H4	GHM	14A401	07A501	09A501			REMOVE FRAME / REVERSE SWING
109	F	MTL	3'-0"	7'-0"	1 3/4"					09A501			EXISTING FRAME TO REMAIN
110A	NL	MTL	3'-0"	7'-0"	1 3/4"								EXISTING FRAME TO REMAIN
110B	NL	MTL	3'-0"	7'-0"	1 3/4"								EXISTING FRAME TO REMAIN
110C	NL	MTL	3'-0"	7'-0"	1 3/4"								EXISTING FRAME TO REMAIN
1110	F	MTL	3'-0"	7'-0"	1 3/4"	H2	HM	02A501	02A501	11A501			
111	F	MTL	3'-0"	7'-0"	1 3/4"	H4	HM	03A501	04A501	09A501	45		
112	2(F)	MTL	6'-0"	7'-0"	1 3/4"	H4	HM	03A501	04A501	09A501			
114A	NL	MTL	3'-0"	7'-0"	1 3/4"	H4	HM	05A501	06A501	11A501			
114B	NL	MTL	3'-0"	7'-0"	1 3/4"	H4	HM	03A501	04A501	09A501	90		
115A	F	MTL	3'-0"	7'-0"	1 3/4"								EXISTING FRAME / PREPARE FRAME FOR NEW CONSTRUCTION
120A	F	GHM	3'-0"	7'-0"	1 3/4"								EXISTING FRAME TO REMAIN
120B	F	GHM	3'-0"	7'-0"	1 3/4"								EXISTING FRAME TO REMAIN
123	2(FG)	HM	6'-4"	7'-0"	1 3/4"								REPLACE DAMAGED LEAF
124B	2(F)	GHM	6'-0"	7'-0"	1 3/4"								REPLACE DAMAGED LEAF
125A	F	MTL	3'-0"	7'-0"	1 3/4"	H4	HM	03A501	04A501	10A501			
125B	F	MTL	3'-0"	7'-0"	1 3/4"	H4	HM	06A501	04A501	10A501			
125C	F	MTL	3'-0"	7'-0"	1 3/4"	H4	HM	06A501	04A501	10A501			
125D	F	MTL	3'-0"	7'-0"	1 3/4"	H4	HM	06A501	04A501	10A501			
129A	F	GHM	3'-6"	7'-0"	1 3/4"	H4	GHM	14A501	07A501	09A501			
129B	F	HM	3'-0"	7'-0"	1 3/4"						45		EXISTING FRAME TO REMAIN
135	2(F)	HM	6'-0"	7'-0"	1 3/4"	H4	HM			10A501			EXISTING FRAME / PREPARE FRAME FOR NEW CONSTRUCTION
136	2(F)	HM	6'-0"	7'-0"	1 3/4"	H4	HM	03A501	04A501	11A501			
137	F	GHM	3'-0"	7'-0"	1 3/4"								EXISTING FRAME TO REMAIN

GENERAL NOTES:

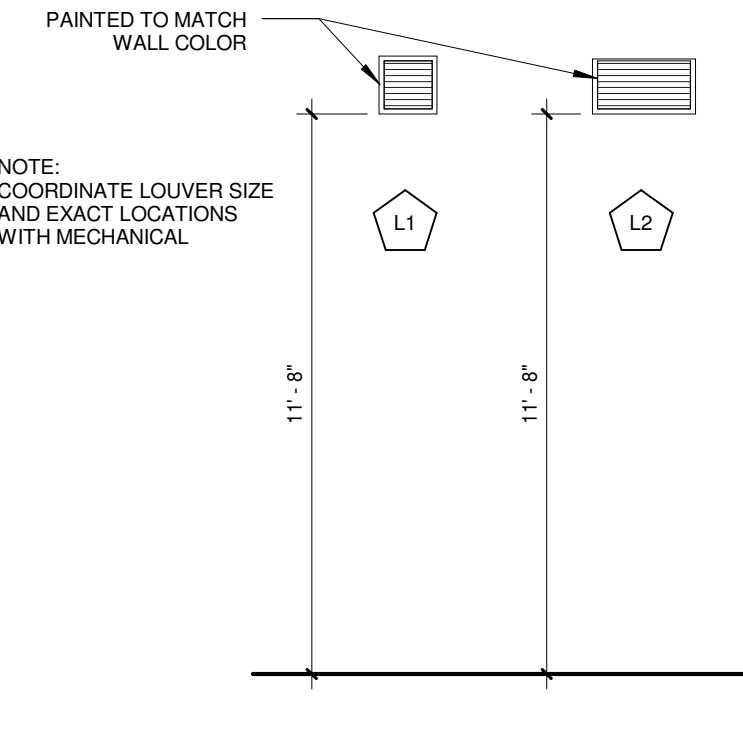
- DOOR MATERIAL ABBREVIATIONS
HM = HOLLOW METAL
GHM = GALVANIZED HOLLOW METAL
AL = ALUMINUM STOREFRONT
WD = SOLID WOOD CORE
- UNLESS NOTED OTHERWISE WHERE GLASS OCCURS IN DOORS PROVIDE TEMPERED GLASS AT NON-RATED DOORS
- GLASS TYPE ABBREVIATIONS
TP = TEMPERED GLASS
TTG = TEMPERED TRANSLUCENT GLASS
XG = IMPACT RESISTANT GLASS
- UNLESS NOTED OTHERWISE ALL DOORS ARE 1 3/4" THICK
- ALL EXTERIOR DOORS WILL BE (GHM)
- DOOR # WITH (A) ARE DOORS THAT ARE EXISTING TO REMAIN (example: 101B) / SEE HARDWARE SCHEDULE FOR HARDWARE CHANGES TO ALL DOORS.



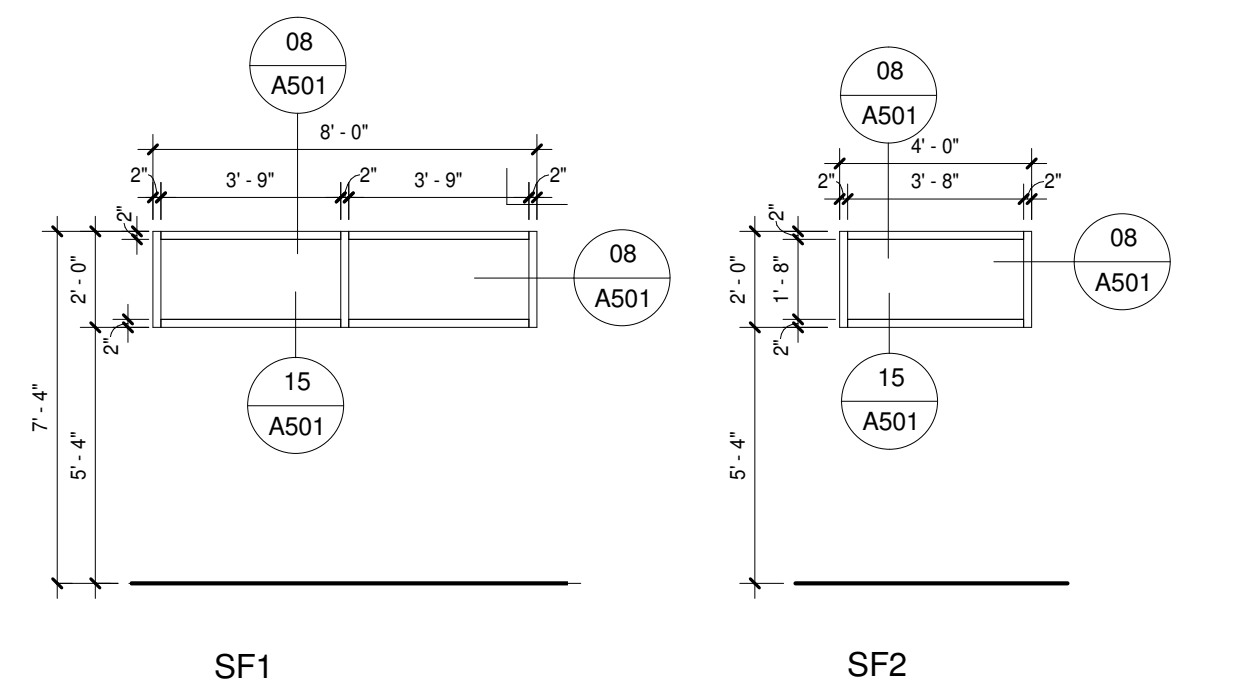
DOOR ELEVATIONS
1/4" = 1'-0"



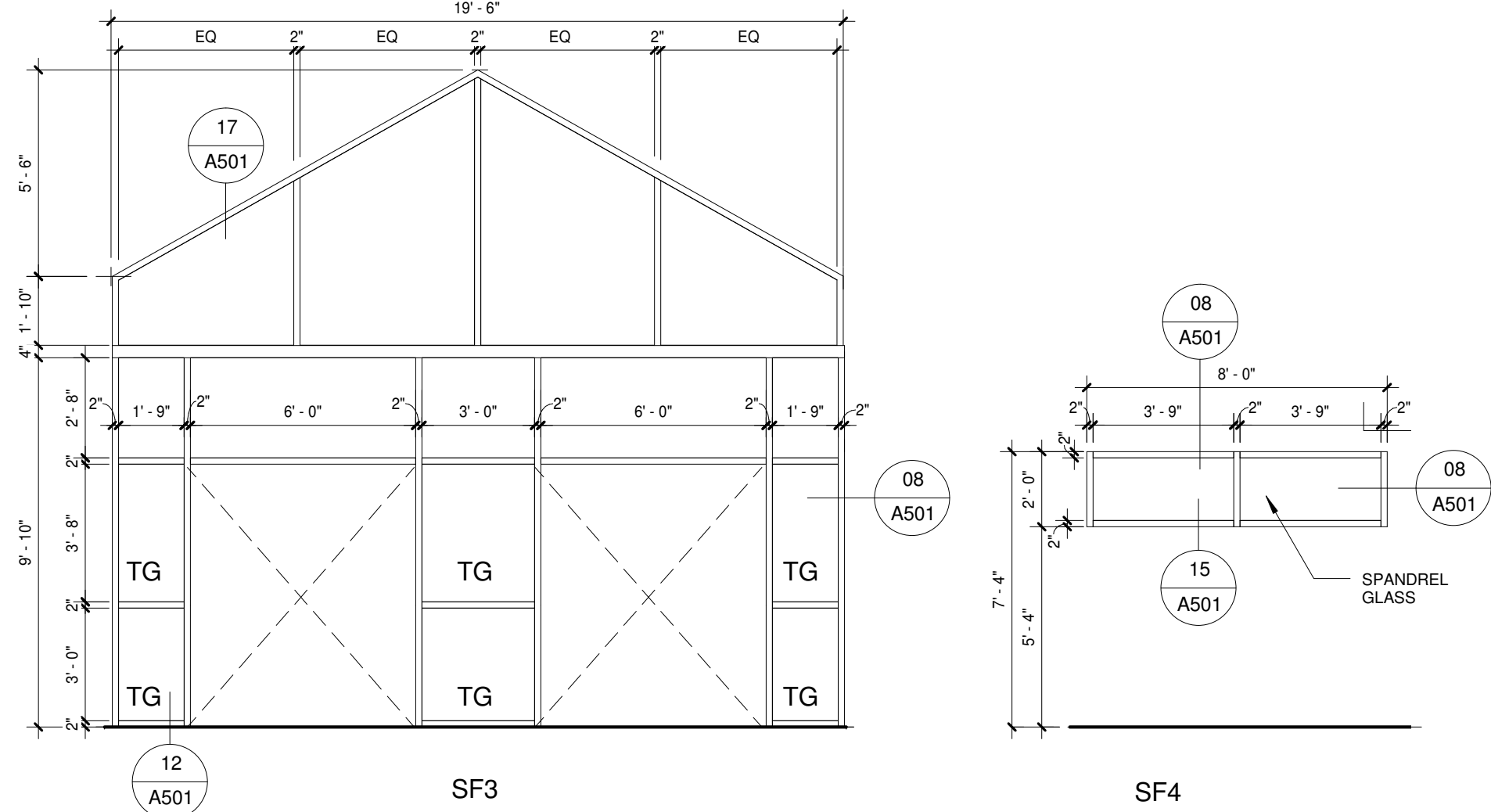
FRAME ELEVATION
1/4" = 1'-0"



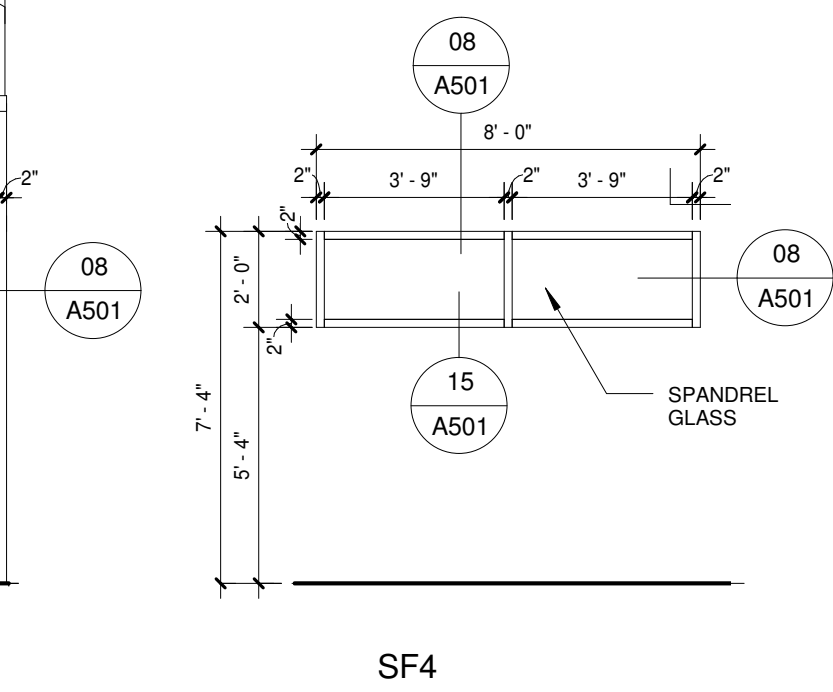
LOUVER LEGEND
1/4" = 1'-0"



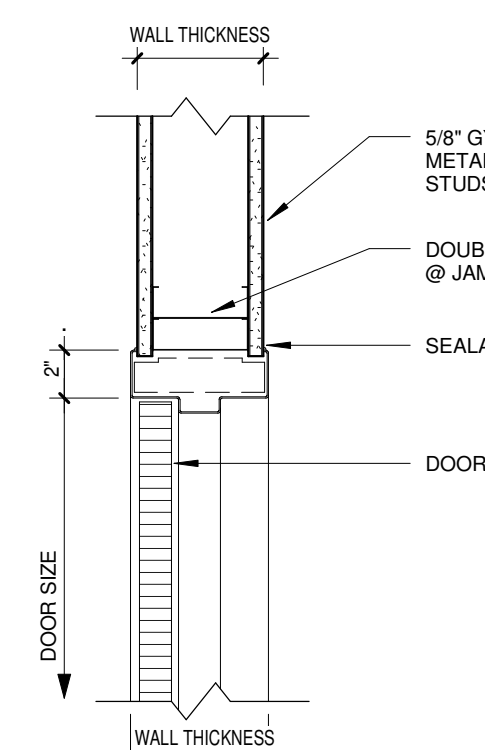
01 STOREFRONT ELEVATIONS
1/4" = 1'-0"



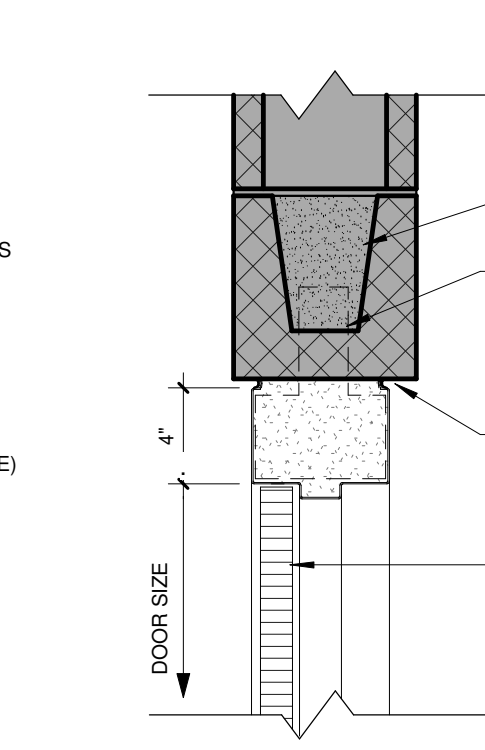
01 STOREFRONT ELEVATIONS
1/4" = 1'-0"



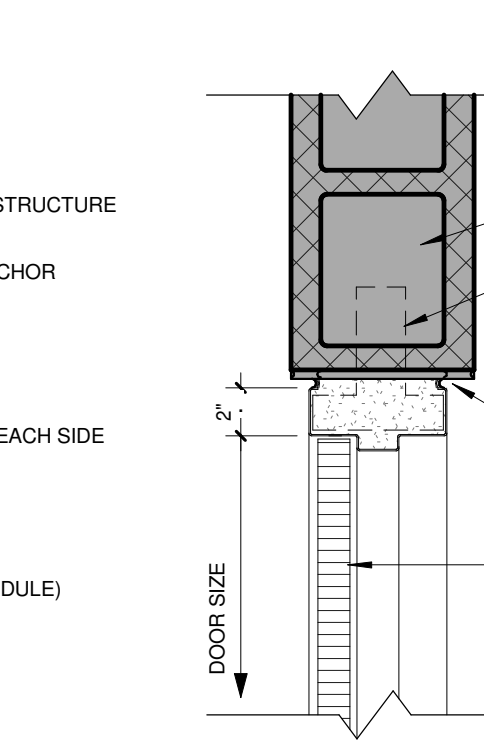
01 STOREFRONT ELEVATIONS
1/4" = 1'-0"



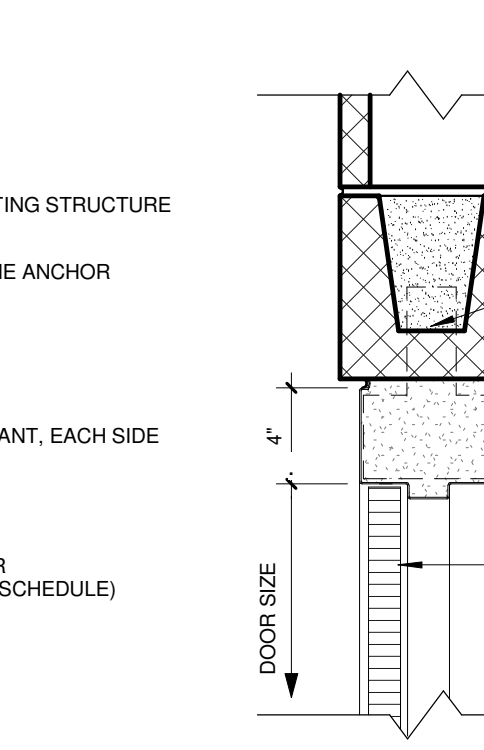
02 HEAD / JAMB DETAIL
1 1/2" = 1'-0"



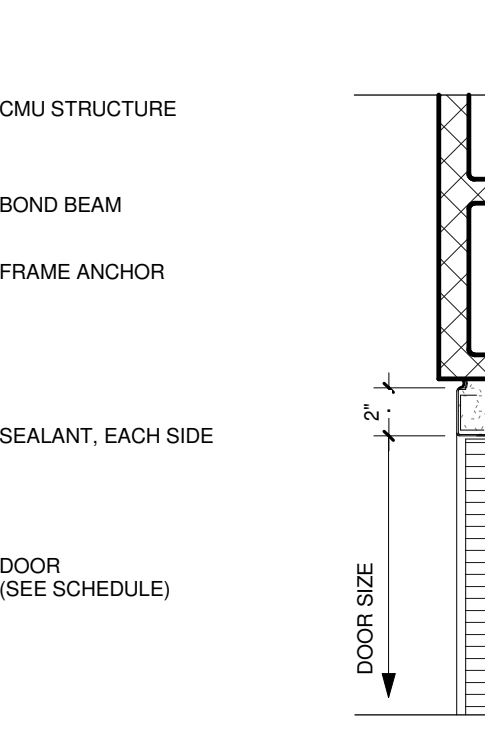
03 HEAD DETAIL
1 1/2" = 1'-0"



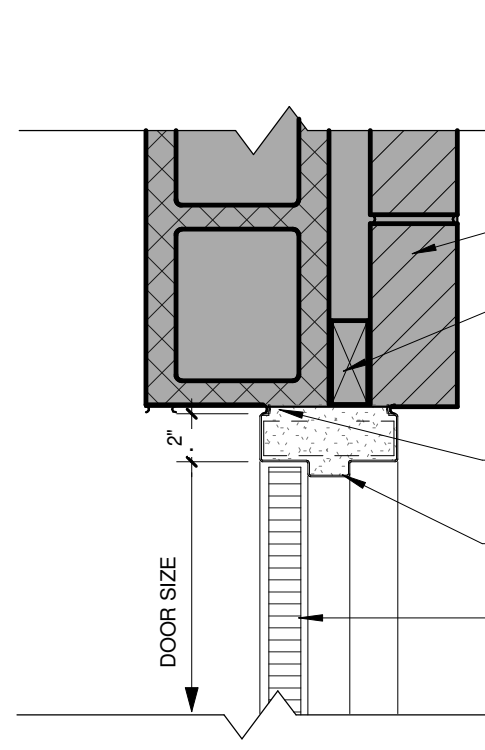
04 JAMB DETAIL
1 1/2" = 1'-0"



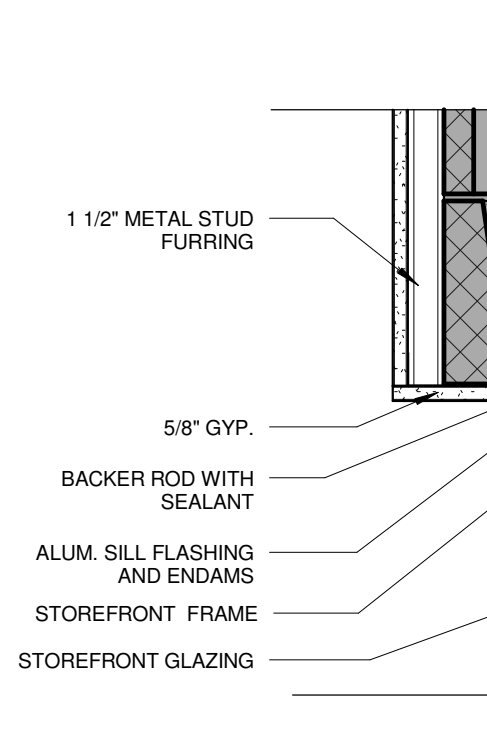
05 HEAD / JAMB DETAIL
1 1/2" = 1'-0"



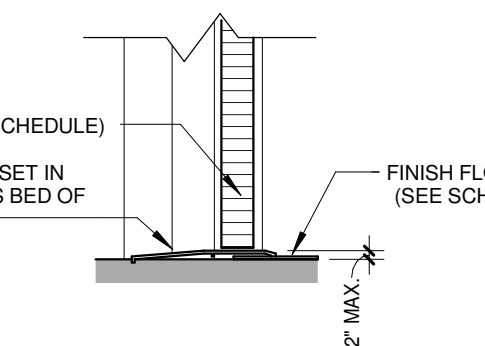
06 JAMB DETAIL
1 1/2" = 1'-0"



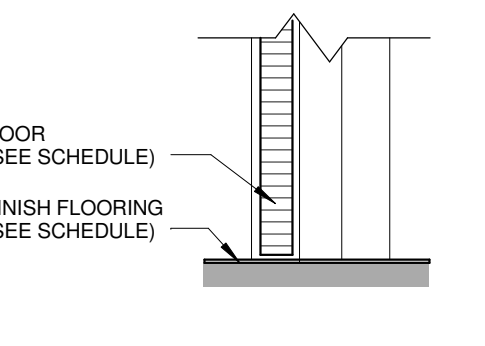
07 JAMB DETAIL
1 1/2" = 1'-0"



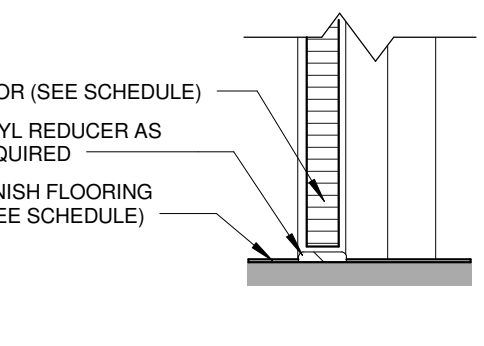
08 WINDOW HEAD / JAMB DETAIL
1 1/2" = 1'-0"



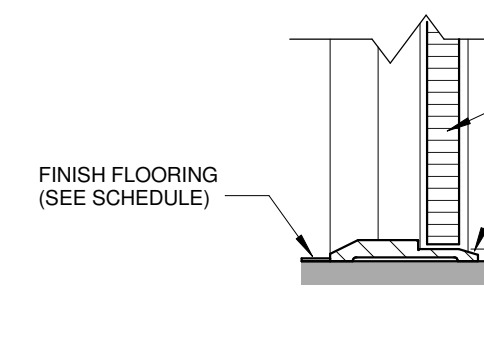
09 SILL DETAIL
1 1/2" = 1'-0"



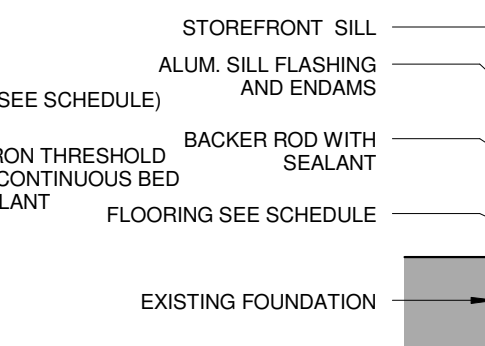
10 SILL DETAIL
1 1/2" = 1'-0"



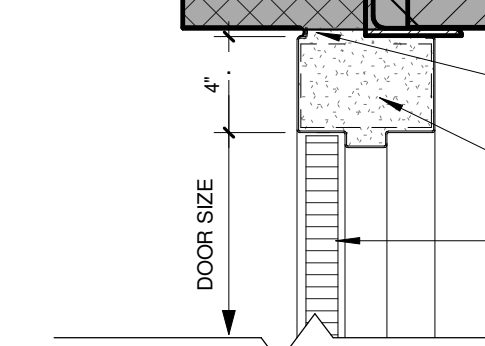
11 SILL DETAIL
1 1/2" = 1'-0"



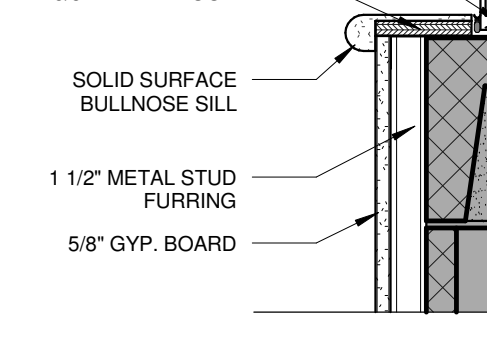
16 SILL DETAIL
1 1/2" = 1'-0"



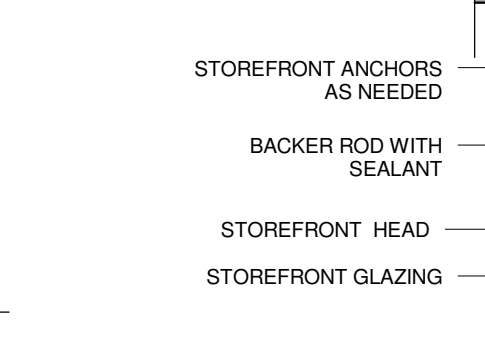
12 STOREFRONT SILL DETAIL
1 1/2" = 1'-0"



14 DOOR HEAD DETAIL
1 1/2" = 1'-0"



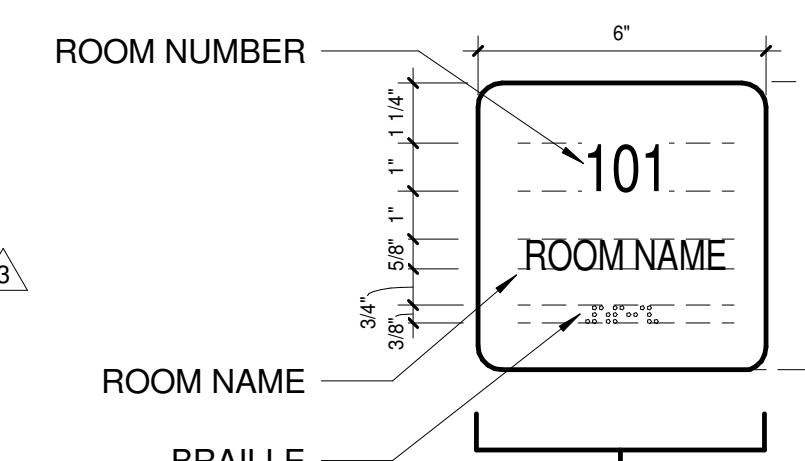
15 STOREFRONT SILL DETAIL
1 1/2" = 1'-0"



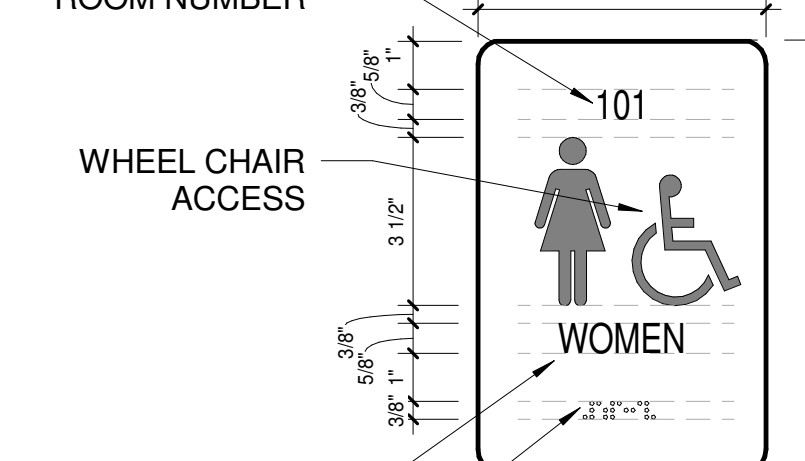
17 JAMB DETAIL
1 1/2" = 1'-0"

HARDWARE SCHEDULE	
DOOR NO.	HARDWARE TYPE
100A	NO. 20 (ALT #4)
100B	NO. 20 (ALT #4)
101*	NO. 1
103A*	NO. 18
103B*	NO. 18
103C*	NO. 12
103D	NO. 19
104*	NO. 21
105*	NO. 1
105A	NO. 3
105B	NO. 3
106*	NO. 7
106A*	NO. 1
106B	NO. 6
106C	NO. 5
107*	NO. 7
107A	NO. 6
107B	NO. 6
107C	NO. 5
108A	NO. 8
109	NO. 15
110*	NO. 1
110A	NO. 2
110B	NO. 2
110C	NO. 2
110D	NO. 5
110E*	NO. 2
111	NO. 8
112	NO. 10
113A*	NO. 1
113B*	NO. 1
114A	NO. 5
114B	NO. 5
115*	NO. 1
115A	NO. 8
116*	NO. 8
117*	NO. 1
118*	NO. 2
119*	NO. 2
120*	NO. 1
120A	NO. 14
120B	NO. 14
121*	NO. 1
122*	NO. 1
123	NO. 13
124A*	NO. 1
124B	NO. 16
125A	NO. 18
125B	NO. 18
125C	NO. 18
125D	NO. 18
127*	NO. 1
128A*	NO. 1
128B*	NO. 1
129A	NO. 19
129B	NO. 22
130*	NO. 1
131*	NO. 1
132*	NO. 1
133*	NO. 1
134*	NO. 22
135	NO. 9
136	NO. 10
137	NO. 17

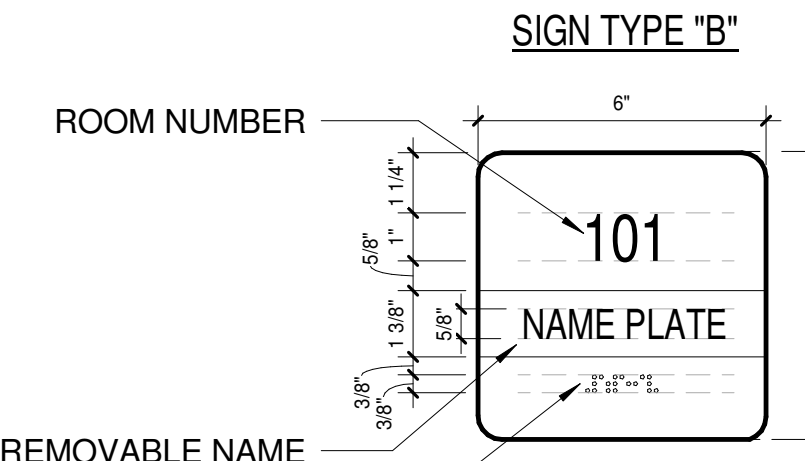
SIGNAGE SCHEDULE			
SGN. TYPE	DOOR NUMBER	SGN. NAME	ROOM NUMBER ON SGN.
A	100A	SMOKING IS PROHIBITED WITHIN 25 FEET OF BUILDING ENTRANCE	100
A	100B	QUINCY ARMY RECRUITER OFFICE	100
A	101*	RECRUITER OFFICE	101
D/E	103A*	DRILL HALL	103
G	103B*	THIS IS A SMOKE FREE FACILITY	103
A	104*	CORRIDOR	104
A	105*	OFFICE SUITE	105
C	105A	OFFICE	105A
C	105B	OFFICE	105B
B	106*	WOMEN'S BATHROOM	106
A	106A*	WOMEN'S LOCKER	106A
B	106B	WOMEN'S LOCKER	106B
B	106C	WOMEN'S BATHROOM	106
B	107*	WOMEN'S BATHROOM	107
A	107A	MEN'S LOCKER	107A
B	107C	MEN'S BATHROOM	107
B	109	TOILET	109
A	110*	OFFICE SUITE	109
C	110A	OFFICE	109C
C	110B	OFFICE	109D
C	110C	OFFICE	109E
A	110D	TELECOM	109C
C	110E*	OFFICE	109D
A	111	JANITORS CLOSET	111
A	112	MECHANICAL	112
A	113A*	CLASSROOM	113A
A	113B*	CLASSROOM	113B
A	114A	WEIGHT ROOM	114
A	114B	WEIGHT ROOM	114
A	115*	FOOD PREP AREA	115
A	115A	RECYCLE ROOM/FIRE RISER	115A
A	116*	SCULLERY	116
A	117*	CORRIDOR	117
C	118*	OFFICE	118
C	119*	OFFICE	119
A	120*	MAINTENANCE	120
A	121*	STORAGE	121
A	122*	STORAGE	122
A	123	TABLE STORAGE	123
A	124A*	UNIT STORAGE	124
A	125A	PLATOON STORAGE	125A
A	125B	PLATOON STORAGE	125B
C	127*	OFFICE	127
A	128A*	CLASSROOM	128
A	128B*	CLASSROOM	128
A	129B	CORRIDOR	129
C	130*	OFFICE	130
A	131*	STORAGE	131
A	132*	CONFERENCE	132
C	133*	OFFICE	133
A	134*	MECHANICAL	134
A	135	TELECOM	135
A	136	MECHANICAL	136
A	138*	BREAK ROOM	138
C	139*	OFFICE	139
C	140*	OFFICE	140
C	141*	OFFICE	141
C	142*	OFFICE	142
C	143*	OFFICE	143
C	144*	OFFICE	144
C	145*	OFFICE	145
C	146*	OFFICE	146
C	147*	OFFICE	147
C	148*	OFFICE	148
C	149*	OFFICE	149
C	150*	OFFICE	150
C	151*	OFFICE	151



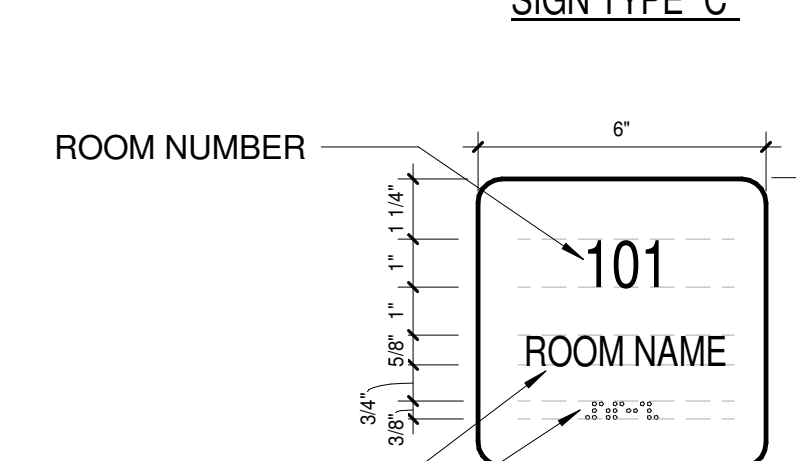
ROOM NUMBER
ROOM NAME
SIGN TYPE "A"



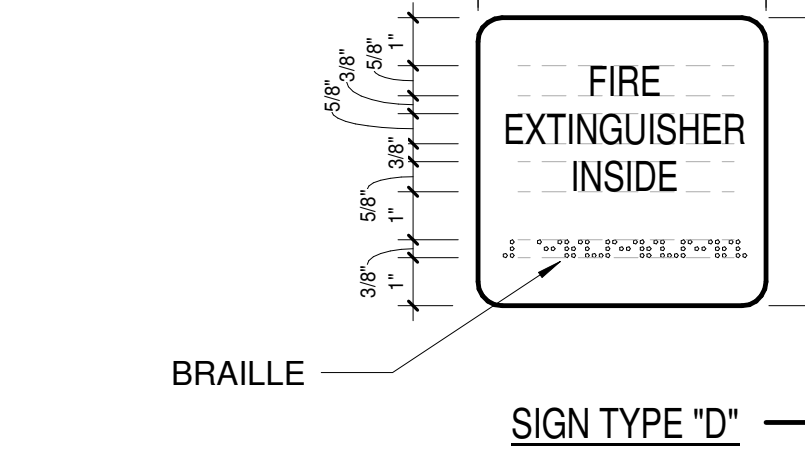
ROOM NUMBER
WHEEL CHAIR ACCESS
SIGN TYPE "B"



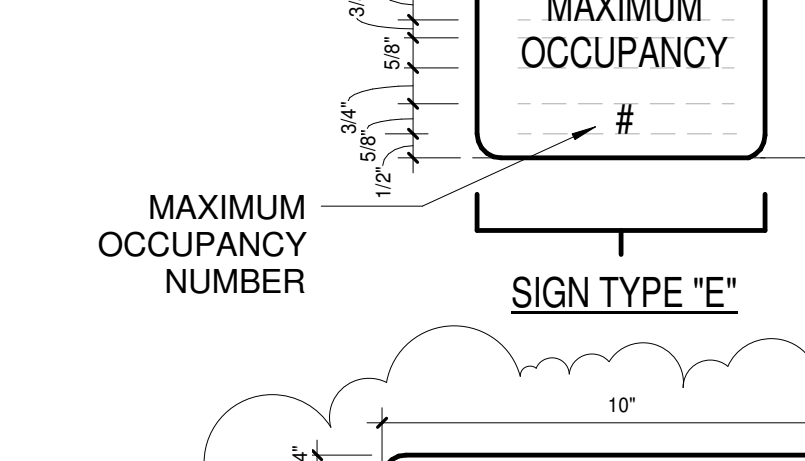
ROOM NUMBER
GENDER NAME
SIGN TYPE "C"



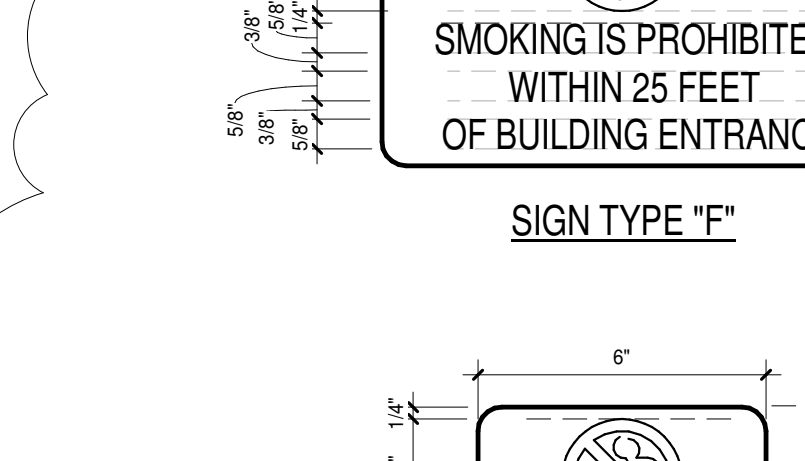
ROOM NUMBER
ROOM NAME
SIGN TYPE "D"



MAXIMUM OCCUPANCY NUMBER
SIGN TYPE "E"



ROOM NUMBER
ROOM NAME
SIGN TYPE "F"



ROOM NUMBER
ROOM NAME
SIGN TYPE "G"

SIGN LEGEND
3" = 1'-0"



DAg ARCHITECTS INC.
612 SOUTH COPELAND STREET,
TALLAHASSEE, FL 32304
(T) 850-656-7506 (F) 850-656-3618
FL# AA-C000745
www.DAgarchitects.com

ALL REPORTS, PLANS, SPECIFICATIONS, COMPUTER FILES, FIELD DATA, NOTES AND OTHER DOCUMENTS AND INSTRUMENTS PREPARED BY THE CONSULTANT AS AN INSTRUMENT OF SERVICES SHALL BE THE PROPERTY OF THE CONSULTANT. THE CONSULTANT SHALL RETAIN ALL COMMON LAW STATUTORY AND OTHER RESERVED RIGHTS INCLUDING THE COPYRIGHT THEREIN.

J Michael Rutland
JMR Architecture, PC

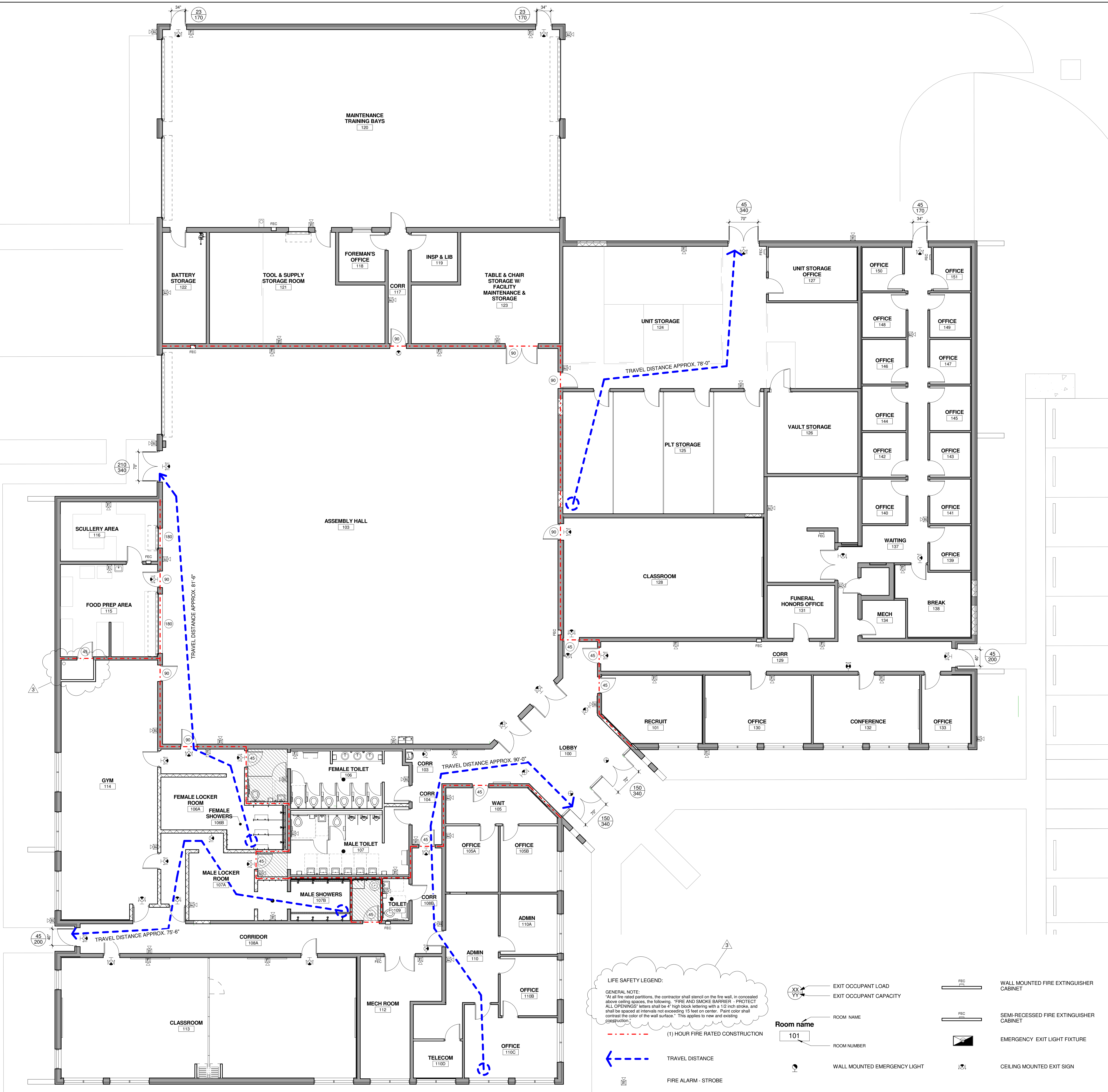
60 Commerce Street
Suite 1520
Montgomery, AL
36104
Phone: (334) 420-5672
Fax: (334) 420-5692

100% SUBMITTAL

DMA PROJECT NO. 12212061
RENOVATION -
QUINCY NATIONAL GUARD ARMORY
2049 Pat Thomas Pkwy Quincy, FL 32351

DRAWING SEAL:

No.	Description	Date
3	ADDENDUM #2	Date 3



LIFE SAFETY LEGEND:
GENERAL NOTE:
"At all fire rated partitions, the contractor shall stencil on the fire wall, in concealed above ceiling spaces, the following: "FIRE AND SMOKE BARRIER - PROTECT ALL OPENINGS" letters shall be 4" high black lettering with a 1/2 inch stroke, and shall be spaced at intervals not exceeding 15 feet on center. Paint color shall contrast the color of the wall surface." This applies to new and existing construction.

(1) HOUR FIRE RATED CONSTRUCTION

TRAVEL DISTANCE

FIRE ALARM - STROBE

1 HOUR FIRE RATED CONSTRUCTION

LIFE SAFETY LEGEND
1/8" = 1'-0"

EXIT OCCUPANT LOAD
EXIT OCCUPANT CAPACITY

Room name
ROOM NAME
ROOM NUMBER

WALL MOUNTED FIRE EXTINGUISHER CABINET
SEMI-RECESSED FIRE EXTINGUISHER CABINET
EMERGENCY EXIT LIGHT FIXTURE
WALL MOUNTED EMERGENCY LIGHT
WALL MOUNTED EXIT SIGN
CEILING MOUNTED EXIT SIGN
FIRE RATED DOOR LABEL

1 FLOOR PLAN
1/8" = 1'-0"



DAG ARCHITECTS INC.
612 SOUTH COPELAND STREET,
TALLAHASSEE, FL 32304
(T) 850-656-7506 (F) 850-656-9818
FL# AA-C000745
www.DAGarchitects.com

ALL REPORTS, PLANS, SPECIFICATIONS, COMPUTER FILES, FIELD DATA, NOTES AND OTHER DOCUMENTS AND INSTRUMENTS PREPARED BY THE CONSULTANT AS AN INSTRUMENT OF SERVICES SHALL REMAIN THE PROPERTY OF THE CONSULTANT. THE CONSULTANT SHALL RETAIN ALL COMMON LAW STATUTORY AND OTHER RESERVED RIGHTS INCLUDING THE COPYRIGHT THEREIN.

ALL PLANS CONTAINED HEREIN ARE CONFIDENTIAL AND EXEMPT FROM PUBLIC INSPECTION OR DISCLOSURE PURSUANT TO SECTION 119.07(3)(b), FLORIDA STATUTES.

J Michael Rutland
JMR Architecture, PC

60 Commerce Street
Suite 1520
P.O. Box 1706
Montgomery, AL 36104
Phone: (334) 420-5672
Fax: (334) 420-5692

100% SUBMITTAL

DMA PROJECT NO. 12212061
RENOVATION -
QUINCY NATIONAL GUARD ARMORY
2049 Pat Thomas Pkwy Quincy, FL 32351

DRAWING SEAL:

REVISIONS:

No.	Description	Date
1	SFM REVIEW COMMENTS	02.04.2014
3	ADDENDUM #2	Date 3

LIFE SAFETY PLAN

Project number	12052
Dated	01.23.2014
PIC	Approver
PM	Designer
Drawn by	Author
Checked by	Checker

LS100
Scale 1/8" = 1'-0"