

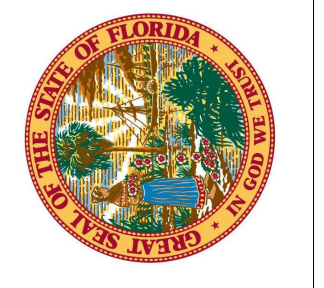
BASIC MATERIALS		BASIC MATERIALS CONT.		DOOR CONTROL SYSTEM	
SYMBOL	DESCRIPTION	SYMBOL	DESCRIPTION	SYMBOL	DESCRIPTION
Ss	SINGLE POLE SWITCH (SUBSCRIPT INDICATES ITEM CONTROLLED)		BRANCH CIRCUIT CONDUIT CONCEALED ABOVE CEILING OR IN WALL. CONDUIT SHALL INCLUDE PHASE, NEUTRAL AND GROUND CONDUCTORS AS REQUIRED FOR CIRCUITS (UNLESS OTHERWISE NOTED).	(M)	MOTION DETECTOR 380'
S3	THREE-WAY SWITCH		BRANCH CIRCUIT CONDUIT CONCEALED IN SLAB, UNDERGROUND OR UNDER FLOOR.	(CR)	CARD READER
S4	FOUR-WAY SWITCH		BRANCH CIRCUIT CONDUIT CONCEALED IN SLAB, UNDERGROUND OR UNDER FLOOR.	(K)	DIGITAL KEYPAD
Sp	SINGLE POLE SWITCH WITH PILOT LIGHT		BRANCH CIRCUIT CONDUIT EXPOSED	(X)	BALANCED MAGNETIC DOOR CONTACT
SNP	SINGLE POLE SWITCH WITH WEATHERPROOF COVER		GROUND OR GROUND ROD AS NOTED	TELEPHONE/COMPUTER RACEWAY SYSTEM	
SNPL	SINGLE POLE SWITCH WITH WEATHERPROOF LOCKING COVER		CONDUIT STUB	(K)X(V)	COMMUNICATIONS INFORMATION OUTLET* MTD. AT RECEPTACLE HEIGHT UNLESS OTHERWISE NOTED.
Sk	SINGLE POLE KEY SWITCH		CONDUIT CONTINUED	C = ABOVE THE COUNTER W = WALL MOUNTED (80' AFF) D = DATA V = VOICE	
SkK	THREE-WAY KEY SWITCH	LIGHTING			
SkK	FOUR-WAY KEY SWITCH		STRIP LIGHT FIXTURE	W	60" AFF WALL MOUNTED ANALOG PHONE LINE
SL	SINGLE POLE SWITCH WITH SECURITY LOCKING KEY		LIGHT FIXTURE		PHONE/DATA AS INDICATED ON DRAWINGS.
SOC	WALL SWITCH WITH OCCUPANCY SENSOR		LOWER CASE LETTER INDICATES CONTROL CIRCUIT SWITCH LEG		TELEPHONE/COMPUTER TERMINAL BOARD
Sf	FAN SWITCH		WALL MOUNTED LIGHT FIXTURE WITH WALL OUTLET BOX		TELEPHONE TERMINAL CABINET
Sm	MANUAL MOTOR STARTER WITH OVERLOAD HEATERS		LIGHT FIXTURE		TELEPHONE SYSTEM RACEWAY
SNP	MANUAL MOTOR STARTER WITH OVERLOAD HEATERS AND PILOT LIGHT		EXIT LIGHT FIXTURE	TELEVISION	
SD	DIMMER SWITCH (1500 WATTS UNLESS OTHERWISE INDICATED)		DIRECTION ARROWS AS SHOWN (SHADED QUADRANT INDICATES FACE(S) OF FIXTURE)		CATV OUTLET LOCATION. PROVIDE EMPTY BOX AND 1" CONDUIT TO ABOVE ACCESSIBLE CEILING WITH FULL STRUNG.
SE	DUPLEX RECEPTACLE		WALL MOUNTED EXIT LIGHT FIXTURE		
(P)	PEDESTAL MOUNTED RECEPTACLE		BATTERY PACK WITH TWIN HEADS		
(P)	FLOOR OUTLET BOX AND DUPLEX RECEPTACLE WITH APPROPRIATE FLANGE		DUAL TECHNOLOGY CEILING MOUNTED OCCUPANCY SENSOR (PROVIDE ALL ACCESSORIES, POWER PACK, SENSORS, ETC., TO PROVIDE FULL COVERAGE).		
(P)	FLOOR OUTLET BOX WITH DUPLEX RECEPTACLE AND ONE COMBINATION W/ VOICEDATA OUTLET	FIRE ALARM/DETECTION SYSTEM			
(P)	FLOOR OUTLET BOX WITH TWO DUPLEX RECEPTACLES AND ONE COMBINATION W/ VOICEDATA OUTLET		MANUAL PULL STATION		
(P)	POKE THRU		CEILING SMOKE DETECTOR. PHOTO-ELECTRIC TYPE UNLESS OTHERWISE NOTED		
(P)	POWER POLE		DUCT SMOKE DETECTOR R = RETURN S = SUPPLY		
(P)	DUPLEX RECEPTACLE MOUNTED ABOVE COUNTER		SUPERVISED CONTROL RELAY		
(P)	GFI RECEPTACLE. WP DENOTES WEATHERPROOF COVER.		DUCT SMOKE REMOTE ALARM INDICATING LAMP. W = TEST SWITCH, WALL MOUNTED 72" AFF		
(P)	GFI RECEPTACLE MOUNTED ABOVE COUNTER		REMOTE INDICATING LAMP FIRE ALARM WITH TEST SWITCH WALL MOUNTED 72" AFF		
(P)	TWO DUPLEX RECEPTACLES WITH COMMON COVER		COMBINATION AUDIBLE/VISUAL NOTIFICATION DEVICE CD = CANDELA RATINGS (75CD UNLESS NOTED OTHERWISE)		
(P)	TWO DUPLEX RECEPTACLES WITH COMMON COVER MOUNTED ABOVE COUNTER		FIRE ALARM SPEAKER WITH STROBE - CEILING MOUNTED CD = CANDELA RATINGS (75CD UNLESS NOTED OTHERWISE)		
(P)	ISOLATED GROUND DUPLEX RECEPTACLE (ORANGE DEVICE)		VISUAL SIGNALING UNIT, WALL MOUNTED (NO AUDIO DEVICE)		
(P)	CIRCLE RECEPTACLE		SPRINKLER TAMPER SWITCH CONNECTION		
(P)	SPECIAL PURPOSE RECEPTACLE, RATING AS NOTED		SPRINKLER WATERFLOW SWITCH CONNECTION		
(P)	LIGHTING CONTROL TIME CLOCK		MONITOR MODULE		
(P)	PHOTOCELL MOUNTED ON ROOF FACING NORTH		ELECTROMAGNETIC DOOR HOLD OPEN DEVICE		
(P)	GROUND BAR		ELECTROMAGNETIC DOOR HOLD OPEN DEVICE CONNECTION TO CLOSURE HOLDER		
(P)	PLUG-IN STRIP WITH RECEPTACLES, 15" O.C. UNLESS OTHERWISE INDICATED		ELECTROMAGNETIC DOOR HOLD OPEN DEVICE CONNECTION TO CLOSURE HOLDER INCLUDES DETECTOR		
(P)	UNDER GROUND CONCRETE ENCASED DUCTBANK		CEILING HEAT DETECTOR 135° F UNLESS OTHERWISE INDICATED.		
(P)	JUNCTION BOX		FIRE ALARM CONTROL PANEL/VOICE EVACUATION PANEL		
(P)	JUNCTION BOX- WALL MOUNTED		FIRE ALARM TERMINAL CABINET		
(P)	SURGE SUPPRESSOR		FIRE ALARM ANNUNCIATOR PANEL WITH VOICE EVACUATION MICROPHONE- FLUSH MOUNTED		
(P)	SHUNT-TRIP BUTTON - FLUSH MOUNTED UNLESS OTHERWISE NOTED NEMA 3R FOR EXTERIOR LOCATIONS		VOICE EVACUATION LOCAL OPERATING CONSOLE		
(P)	MOTOR CONNECTION, NUMBER DENOTES HORSEPOWER		120V FIRE/SMOKE DAMPER		
(P)	VARIABLE FREQUENCY DRIVE				
(P)	DIRECT DIGITAL CONTROL PANEL				
(P)	30AR NF NON-FUSED DISCONNECT SWITCH, SIZE AS NOTED NF DENOTES NON-FUSED				
(P)	30AR 20AF FUSED DISCONNECT AF DENOTES AMP RATING OF SWITCH AF DENOTES AMP FUSE SIZE				
(P)	MCP SIZE				
(P)	30S 3R COMBINATION MAGNETIC MOTOR STARTER, SIZE & # OF POLES 3 POLE UNLESS OTHERWISE NOTED				
(P)	ENCLOSURE NEMA RATING.				
(P)	NEMA STARTER SIZE				
(P)	BRANCH CIRCUIT PANELBOARD, UNDER 250 VOLTS, SURFACE MOUNTED				
(P)	BRANCH CIRCUIT PANELBOARD, UNDER 250 VOLTS, FLUSH MOUNTED				

NOTE: SOME SYMBOLS SHOWN ON THIS LEGEND MAY NOT PERTAIN TO THIS PROJECT.

GENERAL NOTES:		DEMOLITION NOTES:	
1. ALL WORK AND EQUIPMENT UNDER THIS DIVISION SHALL BE IN STRICT COMPLIANCE WITH THE CODES, STANDARDS AND PRACTICES LISTED HEREIN, AND THEIR RESPECTIVE DATES ARE FURNISHED AS THE MINIMUM LATEST REQUIREMENTS.	10. ALL WIRING DEVICES SHALL BE MOUNTED VERTICALLY, UNLESS NOTED OTHERWISE.	1. REFER TO ARCHITECTURAL DEMOLITION DRAWINGS FOR EXTENT OF DEMOLITION WORK. THE ELECTRICAL CONTRACTOR SHALL DISCONNECT ELECTRICAL SERVICES TO ALL EQUIPMENT BEING REMOVED. OWNER SHALL HAVE THE OPTION TO RETAIN REUSABLE ITEMS SUCH AS COVERPLATES, RECEPTACLES, LIGHTS, PANELS, ETC., NOT BEING USED IN THE FINISHED WORK. COORDINATE WITH OWNER PRIOR TO STARTING DEMOLITION. PROPERLY AND LEGALLY DISPOSE OF ALL EQUIPMENT AND MATERIALS BEING REMOVED.	2. REMOVE ALL CONDUIT LEFT EXPOSED BY REMOVAL OF WALLS AND CEILING IN REMODELED AREAS, PLUS BOTH ENDS OF REMAINING CONDUIT IN WALL OR FLOOR WHERE CUT.
2. LIFE SAFETY CODE - NFPA 101	20. ALL RECEPTACLES SHALL BE MOUNTED SUCH THAT THE GROUND PIN IS MOUNTED UP.	3. ELECTRICAL DEVICES CONCEALED BY STORAGE SHELVING, CASEWORK, FURNITURE, ETC. ARE TO BE REMOVED AS REQUIRED BY DEMOLITION PLANS.	3. ELECTRICAL DEVICES CONCEALED BY STORAGE SHELVING, CASEWORK, FURNITURE, ETC. ARE TO BE REMOVED AS REQUIRED BY DEMOLITION PLANS.
3. UNDERWRITERS LABORATORIES, INC. PUBLICATIONS	21. ALL BRANCH CIRCUIT CONDUITS SHALL CONTAIN A MINIMUM OF (2) #14 AWG INSULATED COPPER CONDUCTORS, PLUS A MINIMUM OF (1) #12 AWG GROUND WIRE UNLESS NOTED OTHERWISE. ALL BRANCH CIRCUITS AND FEEDERS SHALL HAVE INDIVIDUAL NEUTRAL CONDUCTORS.	4. CONTRACTOR SHALL BE RESPONSIBLE FOR PATCHING ALL OPENINGS IN EXISTING CONSTRUCTION AFTER REMOVAL OF EQUIPMENT AND ELECTRICAL DEVICES. REFER TO ARCHITECTURAL DRAWINGS FOR PATCHING/WALL REPLACEMENT INSTRUCTIONS.	4. CONTRACTOR SHALL BE RESPONSIBLE FOR PATCHING ALL OPENINGS IN EXISTING CONSTRUCTION AFTER REMOVAL OF EQUIPMENT AND ELECTRICAL DEVICES. REFER TO ARCHITECTURAL DRAWINGS FOR PATCHING/WALL REPLACEMENT INSTRUCTIONS.
4. NATIONAL FIRE PROTECTION ASSOCIATION (NFPA)	22. COORDINATE THE LOCATION OF ALL DEVICES AND BOXES WITH WINDOWS, BUILT-INS, AND CABINETS PRIOR TO INSTALLATION OF CONDUITS OR BOXES. CONTRACTOR SHALL CONSULT ALL CONTRACT DRAWINGS TO ASCERTAIN ANY CONFLICTS PRIOR TO BIDDING. CONTRACTOR SHALL OBTAIN CLARIFICATION FROM THE ARCHITECT/ENGINEER. CONTRACTOR SHALL NOT BE ENTITLED TO ADDITIONAL COMPENSATION FOR WORK REQUIRED TO RELOCATE OUTLET BOXES THAT ARE OR BECOME NECESSARY FOR COORDINATION WITH OTHER TRADES WORK.	5. FOR ALL EQUIPMENT AND WIRING DEVICES BEING REMOVED, REMOVE CONDUCTORS BACK TO PANEL, TURN BREAKERS TO "OFF" AND LABEL THE CIRCUIT "SPARE" ON THE PANEL DIRECTORY WHERE THERE ARE WIRING DEVICES TO REMAIN ON THE BRANCH CIRCUIT. REMOVE CONDUCTORS BACK TO JUNCTION BOX.	5. FOR ALL EQUIPMENT AND WIRING DEVICES BEING REMOVED, REMOVE CONDUCTORS BACK TO PANEL, TURN BREAKERS TO "OFF" AND LABEL THE CIRCUIT "SPARE" ON THE PANEL DIRECTORY WHERE THERE ARE WIRING DEVICES TO REMAIN ON THE BRANCH CIRCUIT. REMOVE CONDUCTORS BACK TO JUNCTION BOX.
5. AMERICAN NATIONAL STANDARDS INSTITUTE (ANSI)	7. INSTITUTE OF ELECTRICAL AND ELECTRONIC ENGINEERS (IEEE)	6. PROVIDE BLANK COVERPLATES WHERE DEVICES ARE BEING REMOVED FROM EXISTING WALLS TO REMAIN, MATCH COLOR OF EXISTING DEVICE.	6. PROVIDE BLANK COVERPLATES WHERE DEVICES ARE BEING REMOVED FROM EXISTING WALLS TO REMAIN, MATCH COLOR OF EXISTING DEVICE.
6. NATIONAL ELECTRICAL CODE - NFPA 70	8. NATIONAL ELECTRICAL MANUFACTURERS ASSOCIATION (NEMA)	7. FIELD VERIFY ALL EXISTING CONDITIONS AND DIMENSIONS PRIOR TO BEGINNING WORK AND OBTAIN CLARIFICATION FROM ARCHITECT/ENGINEER.	7. FIELD VERIFY ALL EXISTING CONDITIONS AND DIMENSIONS PRIOR TO BEGINNING WORK AND OBTAIN CLARIFICATION FROM ARCHITECT/ENGINEER.
8. REQUIREMENTS OF LOCAL POWER COMPANY.	9. REQUIREMENTS OF LOCAL POWER COMPANY.	8. INTERRUPTION OF SERVICES: CONTRACTOR SHALL COORDINATE SERVICE INTERRUPTION WITH OWNER AND UTILITY COMPANY AND SHALL NOT INTERRUPT POWER WITHOUT OWNER/ARCHITECT'S PERMISSION.	8. INTERRUPTION OF SERVICES: CONTRACTOR SHALL COORDINATE SERVICE INTERRUPTION WITH OWNER AND UTILITY COMPANY AND SHALL NOT INTERRUPT POWER WITHOUT OWNER/ARCHITECT'S PERMISSION.
10. 2010 FLORIDA BUILDING CODE	10. 2010 FLORIDA BUILDING CODE	9. ALL EXISTING SURFACE MOUNTED RACEWAY SERVICES TO REMAIN SHALL BE CONCEALED.	9. ALL EXISTING SURFACE MOUNTED RACEWAY SERVICES TO REMAIN SHALL BE CONCEALED.
11. THE AMERICANS WITH DISABILITIES ACT (ADA)	11. THE AMERICANS WITH DISABILITIES ACT (ADA)		
12. FLORIDA ACCESSIBILITY CODE	12. FLORIDA ACCESSIBILITY CODE		
13. MIAMI-DADE COUNTY, CITY OF HOMESTEAD	13. MIAMI-DADE COUNTY, CITY OF HOMESTEAD		
2. REFER TO THE ARCHITECTURAL, MECHANICAL, PLUMBING, FIRE PROTECTION, CIVIL, LANDSCAPE, INTERIOR DESIGN, TECHNOLOGY AND STRUCTURAL DRAWINGS FOR RELATED INFORMATION AND ADDITIONAL INSTALLATION REQUIREMENTS TO BE PERFORMED AS PART OF THE WORK.	2. REFER TO THE ARCHITECTURAL, MECHANICAL, PLUMBING, FIRE PROTECTION, CIVIL, LANDSCAPE, INTERIOR DESIGN, TECHNOLOGY AND STRUCTURAL DRAWINGS FOR RELATED INFORMATION AND ADDITIONAL INSTALLATION REQUIREMENTS TO BE PERFORMED AS PART OF THE WORK.		
3. REFER TO THE SPECIFICATIONS FOR ADDITIONAL REQUIREMENTS.	3. REFER TO THE SPECIFICATIONS FOR ADDITIONAL REQUIREMENTS.		
4. REFER TO MECHANICAL DRAWINGS AND SPECIFICATIONS FOR THE REQUIREMENTS ASSOCIATED WITH WIRING AND CONNECTION OF INTERLOCKING AND CONTROLS OF MECHANICAL UNITS AND THERMOSTAT LOCATIONS.	4. REFER TO MECHANICAL DRAWINGS AND SPECIFICATIONS FOR THE REQUIREMENTS ASSOCIATED WITH WIRING AND CONNECTION OF INTERLOCKING AND CONTROLS OF MECHANICAL UNITS AND THERMOSTAT LOCATIONS.		
5. COORDINATE OUTLET BOX LOCATIONS WITH MASONRY TO AVOID CUTTING ON MORTAR JOINTS.	5. COORDINATE OUTLET BOX LOCATIONS WITH MASONRY TO AVOID CUTTING ON MORTAR JOINTS.		
6. ALL MOUNTING HEIGHTS SHOWN ARE TO THE CENTERLINE OF THE DEVICE UNLESS NOTED OTHERWISE. VERIFY ALL OUTLET LOCATIONS ON THE JOB PRIOR TO ROUGH-IN.	6. ALL MOUNTING HEIGHTS SHOWN ARE TO THE CENTERLINE OF THE DEVICE UNLESS NOTED OTHERWISE. VERIFY ALL OUTLET LOCATIONS ON THE JOB PRIOR TO ROUGH-IN.		
7. EACH DATA, TELEPHONE, VIDEO OR OTHER SYSTEMS OUTLET REQUIRES 3/4" C. STUBBED TO ACCESSIBLE CEILING SPACE UNLESS OTHERWISE NOTED ON PLANS. PROVIDE INSULATED BUSHINGS ON ALL CONDUITS. LABEL CONDUIT TO IDENTIFY ITS INTENDED USE (IE: TELEPHONE, DATA, ETC.).	7. EACH DATA, TELEPHONE, VIDEO OR OTHER SYSTEMS OUTLET REQUIRES 3/4" C. STUBBED TO ACCESSIBLE CEILING SPACE UNLESS OTHERWISE NOTED ON PLANS. PROVIDE INSULATED BUSHINGS ON ALL CONDUITS. LABEL CONDUIT TO IDENTIFY ITS INTENDED USE (IE: TELEPHONE, DATA, ETC.).		
8. EACH BRANCH CIRCUIT RACEWAY SHALL HAVE A FULL SIZE EQUIPMENT GROUND CONDUCTOR WHERE ISOLATED GROUND CIRCUITS ARE SHOWN ON THE PLANS. PROVIDE AN ISOLATED GROUND CONDUCTOR THROUGHOUT THE LENGTH OF THE CIRCUIT IN ADDITION TO THE PHASE, NEUTRAL AND EQUIPMENT GROUND CONDUCTORS.	8. EACH BRANCH CIRCUIT RACEWAY SHALL HAVE A FULL SIZE EQUIPMENT GROUND CONDUCTOR WHERE ISOLATED GROUND CIRCUITS ARE SHOWN ON THE PLANS. PROVIDE AN ISOLATED GROUND CONDUCTOR THROUGHOUT THE LENGTH OF THE CIRCUIT IN ADDITION TO THE PHASE, NEUTRAL AND EQUIPMENT GROUND CONDUCTORS.		
9. PROVIDE 18" LONG MIN. CONDUIT SLEEVES THRU ALL WALLS WHERE CABLES ARE INDICATED OR REQUIRED TO PASS THRU WALLS. PROVIDE BUSHINGS ON BOTH ENDS. SIZE CONDUIT FOR CABLES INSTALLED. AT CABLE TRAYS, PROVIDE ONE 4" CONDUIT SLEEVE FOR EACH 4" WIDTH OF CABLE TRAY.	9. PROVIDE 18" LONG MIN. CONDUIT SLEEVES THRU ALL WALLS WHERE CABLES ARE INDICATED OR REQUIRED TO PASS THRU WALLS. PROVIDE BUSHINGS ON BOTH ENDS. SIZE CONDUIT FOR CABLES INSTALLED. AT CABLE TRAYS, PROVIDE ONE 4" CONDUIT SLEEVE FOR EACH 4" WIDTH OF CABLE TRAY.		
10. ALL BRANCH CIRCUIT HOMERUNS SHALL BE ROUTED IN 1/2" C. MINIMUM. MC CABLE IS NOT ALLOWED.	10. ALL BRANCH CIRCUIT HOMERUNS SHALL BE ROUTED IN 1/2" C. MINIMUM. MC CABLE IS NOT ALLOWED.		
11. LIGHT SWITCHES SHALL BE MOUNTED 48 INCHES ABOVE FINISHED FLOOR TO CENTER LINE OF DEVICE, UNLESS NOTED OTHERWISE.	11. LIGHT SWITCHES SHALL BE MOUNTED 48 INCHES ABOVE FINISHED FLOOR TO CENTER LINE OF DEVICE, UNLESS NOTED OTHERWISE.		
12. RECEPTACLES SHALL BE LOCATED 18 INCHES ABOVE FINISHED FLOOR TO CENTER LINE OF DEVICE, UNLESS NOTED OTHERWISE. ABOVE COUNTER RECEPTACLES SHALL BE MOUNTED 6" ABOVE BACK SPLASH TO CENTERLINE OF DEVICE UNLESS NOTED OTHERWISE.	12. RECEPTACLES SHALL BE LOCATED 18 INCHES ABOVE FINISHED FLOOR TO CENTER LINE OF DEVICE, UNLESS NOTED OTHERWISE. ABOVE COUNTER RECEPTACLES SHALL BE MOUNTED 6" ABOVE BACK SPLASH TO CENTERLINE OF DEVICE UNLESS NOTED OTHERWISE.		
13. EQUIPMENT SHALL BE OF MATERIALS SUITABLE FOR AND RATED FOR THE ENVIRONMENT IN WHICH THEY ARE TO BE INSTALLED, WITH APPROPRIATE NEMA ENCLOSURE RATING. A. WORKING CLEARANCES AND DEDICATED SPACE FOR ELECTRICAL EQUIPMENT SHALL BE IN COMPLIANCE WITH NEC 110. SUBMIT COORDINATION DRAWINGS OF ELECTRICAL ROOMS SHOWING COMPLIANCE.	13. EQUIPMENT SHALL BE OF MATERIALS SUITABLE FOR AND RATED FOR THE ENVIRONMENT IN WHICH THEY ARE TO BE INSTALLED, WITH APPROPRIATE NEMA ENCLOSURE RATING. A. WORKING CLEARANCES AND DEDICATED SPACE FOR ELECTRICAL EQUIPMENT SHALL BE IN COMPLIANCE WITH NEC 110. SUBMIT COORDINATION DRAWINGS OF ELECTRICAL ROOMS SHOWING COMPLIANCE.		
14. WHEN ELECTRICAL BOXES ARE LOCATED IN VERTICAL FIRE-RESISTIVE ASSEMBLIES (CLASSIFIED AS FIRE/SMOKE AND SMOKE PARTITIONS), THEY SHALL BE INSTALLED WITHOUT AFFECTING THE FIRE CLASSIFICATION. ALL OF THE FOLLOWING CONDITIONS SHALL BE MET: A. ALL ELECTRICAL BOXES SHALL BE METALLIC. B. BOX OPENING SHALL OCCUR ONLY ON ONE SIDE OF FRAMING SPACE. C. BOX OPENING SHALL NOT EXCEED 16 SQUARE INCHES. D. ALL CLEARANCES BETWEEN OUTLET BOX AND GYPSUM BOARD SHALL BE COMPLETELY FILLED WITH JOINT COMPOUND (OR OTHER APPROVED MATERIAL). E. PROVIDE A WALL AROUND OUTLETS LARGER THAN 16 SQUARE INCHES. THE INTEGRITY OF THE WALL RATING SHALL BE MAINTAINED. F. THE TOTAL AGGREGATE SURFACE AREA OF THE BOXES SHALL NOT EXCEED 100 SQUARE INCHES PER 100 SQUARE FEET. G. OUTLET BOXES LOCATED ON OPPOSITE SIDES OF FIRE-RESISTIVE ASSEMBLIES SHALL BE SEPARATED BY A MINIMUM HORIZONTAL DISTANCE OF 24 INCHES. H. OUTLET BOXES SHALL BE SECURELY FASTENED TO WALL FRAMING MEMBERS. I. THE OPENING IN THE GYPSUM BOARD FACING SHALL BE CUT NOT TO EXCEED 1/8 INCH BETWEEN THE EDGES OF THE OUTLET BOX AND THE EDGES OF THE OPENING.	14. WHEN ELECTRICAL BOXES ARE LOCATED IN VERTICAL FIRE-RESISTIVE ASSEMBLIES (CLASSIFIED AS FIRE/SMOKE AND SMOKE PARTITIONS), THEY SHALL BE INSTALLED WITHOUT AFFECTING THE FIRE CLASSIFICATION. ALL OF THE FOLLOWING CONDITIONS SHALL BE MET: A. ALL ELECTRICAL BOXES SHALL BE METALLIC. B. BOX OPENING SHALL OCCUR ONLY ON ONE SIDE OF FRAMING SPACE. C. BOX OPENING SHALL NOT EXCEED 16 SQUARE INCHES. D. ALL CLEARANCES BETWEEN OUTLET BOX AND GYPSUM BOARD SHALL BE COMPLETELY FILLED WITH JOINT COMPOUND (OR OTHER APPROVED MATERIAL). E. PROVIDE A WALL AROUND OUTLETS LARGER THAN 16 SQUARE INCHES. THE INTEGRITY OF THE WALL RATING SHALL BE MAINTAINED. F. THE TOTAL AGGREGATE SURFACE AREA OF THE BOXES SHALL NOT EXCEED 100 SQUARE INCHES PER 100 SQUARE FEET. G. OUTLET BOXES LOCATED ON OPPOSITE SIDES OF FIRE-RESISTIVE ASSEMBLIES SHALL BE SEPARATED BY A MINIMUM HORIZONTAL DISTANCE OF 24 INCHES. H. OUTLET BOXES SHALL BE SECURELY FASTENED TO WALL FRAMING MEMBERS. I. THE OPENING IN THE GYPSUM BOARD FACING SHALL BE CUT NOT TO EXCEED 1/8 INCH BETWEEN THE EDGES OF THE OUTLET BOX AND THE EDGES OF THE OPENING.		
15. ALL CONDUCTORS INSTALLED ABOVE THE ROOF SHALL BE DERATED FOR AMBIENT TEMPERATURE INCLUDING AMBIENT TEMPERATURE ADJUSTMENT IN ACCORDANCE WITH ARTICLE 310.15 (B)(2)(g).	15. ALL CONDUCTORS INSTALLED ABOVE THE ROOF SHALL BE DERATED FOR AMBIENT TEMPERATURE INCLUDING AMBIENT TEMPERATURE ADJUSTMENT IN ACCORDANCE WITH ARTICLE 310.15 (B)(2)(g).		
16. PROVIDE GFI/PROTECTION FOR ALL RECEPTACLES FOR DRINKING FOUNTAIN, WATER COOLERS, HEAT TRACE, ELEVATOR ROOMS AND SHAFTS, MECHANICAL ROOM, JANITOR CLOSETS, OUTDOORS, KITCHENS AND ALL OTHER LOCATIONS WITHIN 6 FEET OF A SINK OR OTHER WATER SOURCE IN ACCORDANCE WITH THE NEC.	16. PROVIDE GFI/PROTECTION FOR ALL RECEPTACLES FOR DRINKING FOUNTAIN, WATER COOLERS, HEAT TRACE, ELEVATOR ROOMS AND SHAFTS, MECHANICAL ROOM, JANITOR CLOSETS, OUTDOORS, KITCHENS AND ALL OTHER LOCATIONS WITHIN 6 FEET OF A SINK OR OTHER WATER SOURCE IN ACCORDANCE WITH THE NEC.		
17. PROVIDE SURGE PROTECTION AS REQUIRED FOR NFPA 780 4.18.2 FOR ANY POWER OR LOW VOLTAGE (FIRE ALARM, TELECOM, ETC.) CIRCUIT EXITING THE BUILDING.	17. PROVIDE SURGE PROTECTION AS REQUIRED FOR NFPA 780 4.18.2 FOR ANY POWER OR LOW VOLTAGE (FIRE ALARM, TELECOM, ETC.) CIRCUIT EXITING THE BUILDING.		
18. ALL CONDUIT IN PUBLIC AREAS SHALL BE CONCEALED UNLESS NOTED OTHERWISE.	18. ALL CONDUIT IN PUBLIC AREAS SHALL BE CONCEALED UNLESS NOTED OTHERWISE.		
	46. LOCATE A 20A(1P)20V RECEPTACLE WITHIN 4" OF EACH DATA OUTLET AT THE SAME HEIGHT. 47. FACEPLATES FOR ALL DEVICES IN MECHANICAL, ELECTRICAL AND COMM ROOMS SHALL BE STAINLESS STEEL.		

LIGHTNING PROTECTION SYSTEM
CONTRACTOR SHALL PROVIDE A COMPLETE, FULLY CONCEALED, ROOF AND SITE MOUNTED LIGHTNING PROTECTION SYSTEM FOR THE ENTIRE FACILITY PER THE REQUIREMENTS OF THE DIVISION 16 SPECIFICATIONS. SYSTEM SHALL BE DESIGNED AND INSTALLED PER NFPA 780 & SHALL BE UL LISTED. PROVIDE LIGHTNING PROTECTION FOR ALL SITE LIGHTING AND FLAGPOLES, ETC.

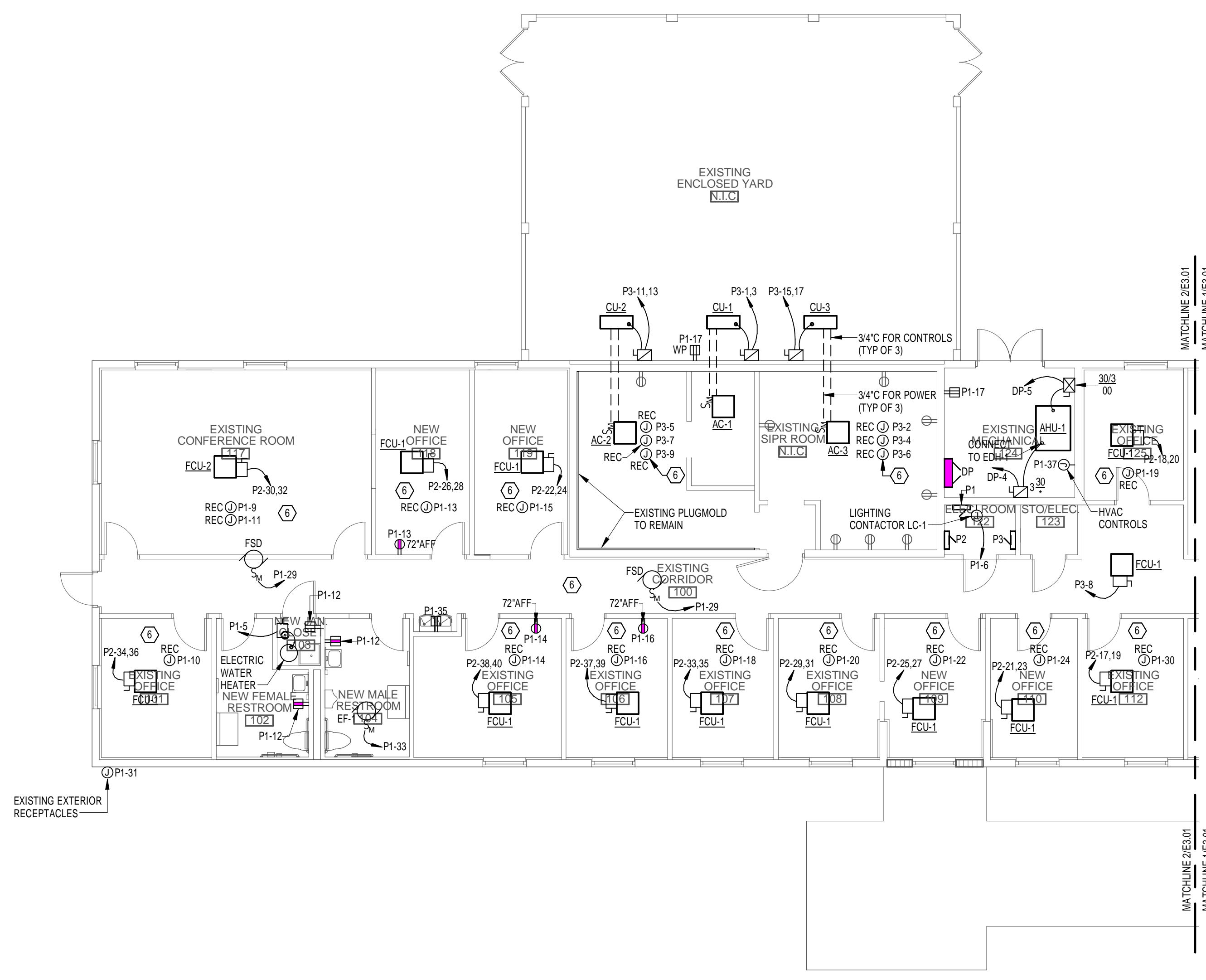
TO THE BEST OF THE ENGINEER'S KNOWLEDGE, THESE PLANS AND SPECIFICATIONS COMPLY WITH THE 2010 FLORIDA BUILDING CODE, THE FLORIDA FIRE PREVENTION CODE (2010) AND ALL LOCAL CODES AND ORDINANCES.



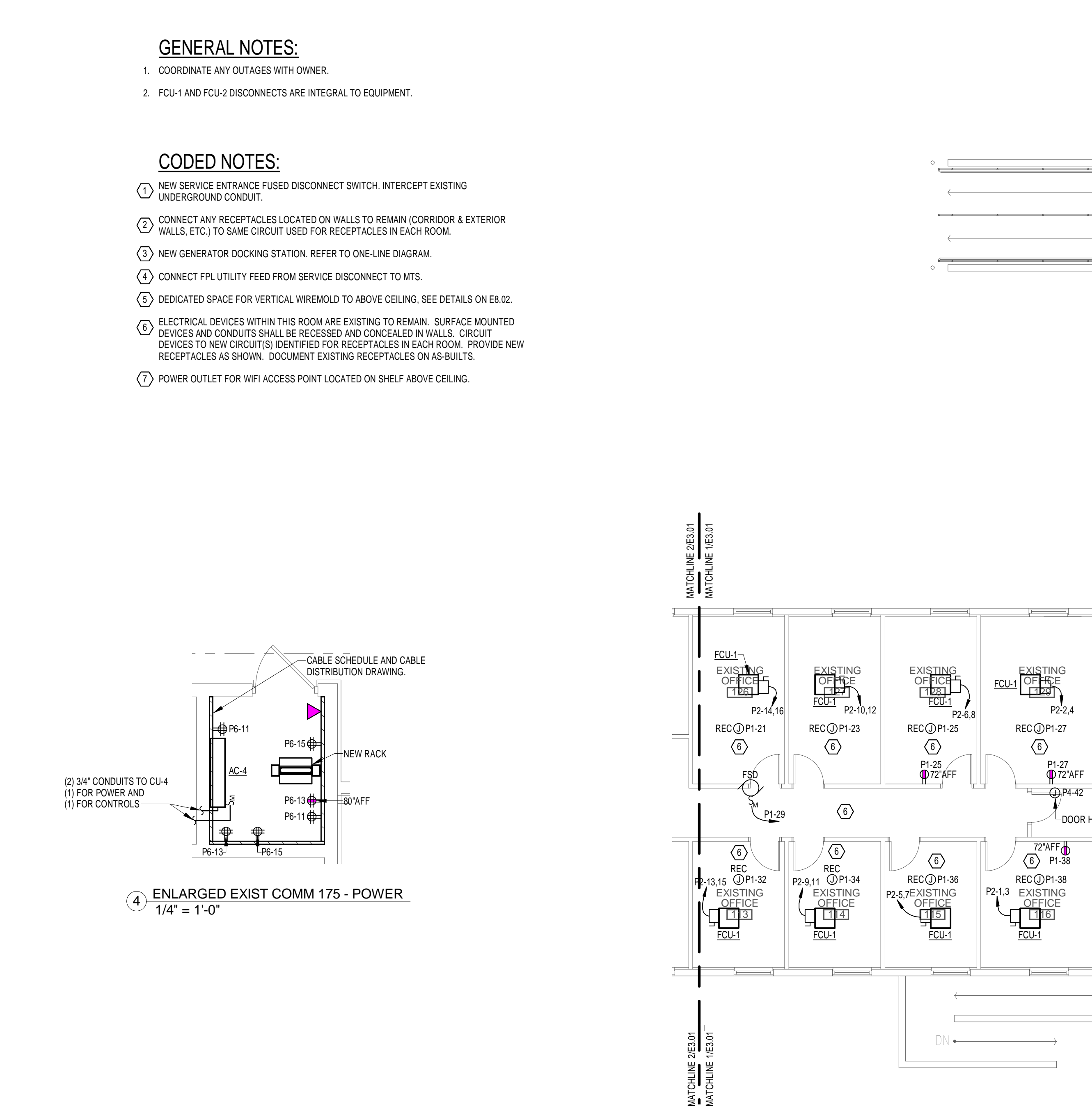
ISSUE	DATE
PRELIMINARY DESIGN	03-27-13
100% PROGRESS SET	01-31-14
BID SET	03-12-14
1 ADDENDUM 2	03-28-14

DRAWING TITLE
ELECTRICAL ABBREVIATIONS, LEGEND, SYMBOLS AND NOTES

DATE	MARCH 9, 2009
Project No.	1304.00
DRAWN	PJM
CHECK	JWR
SHEET	



2 FIRST FLOOR POWER PLAN
1/8" = 1'-0"

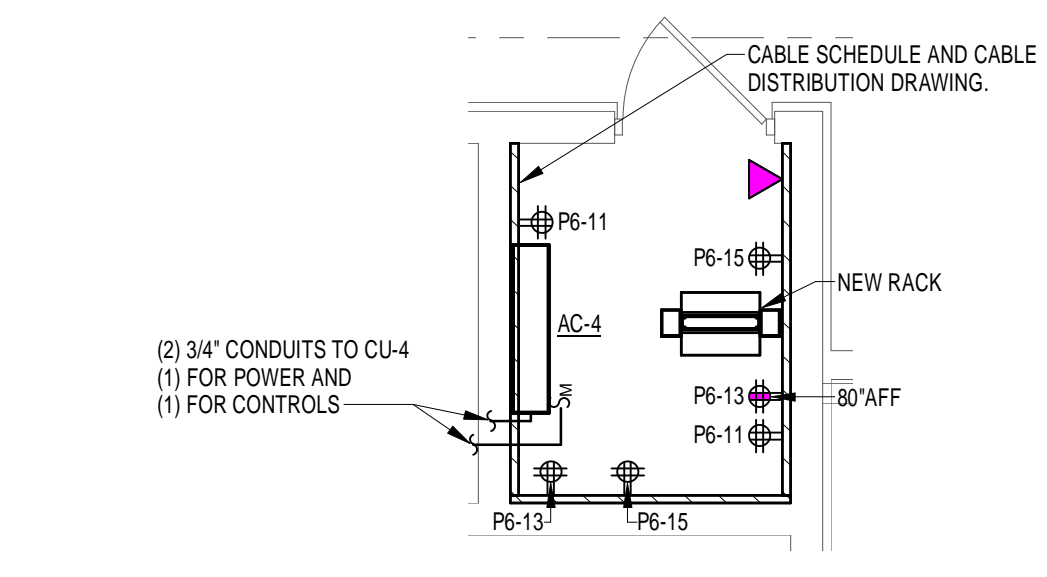


GENERAL NOTES:

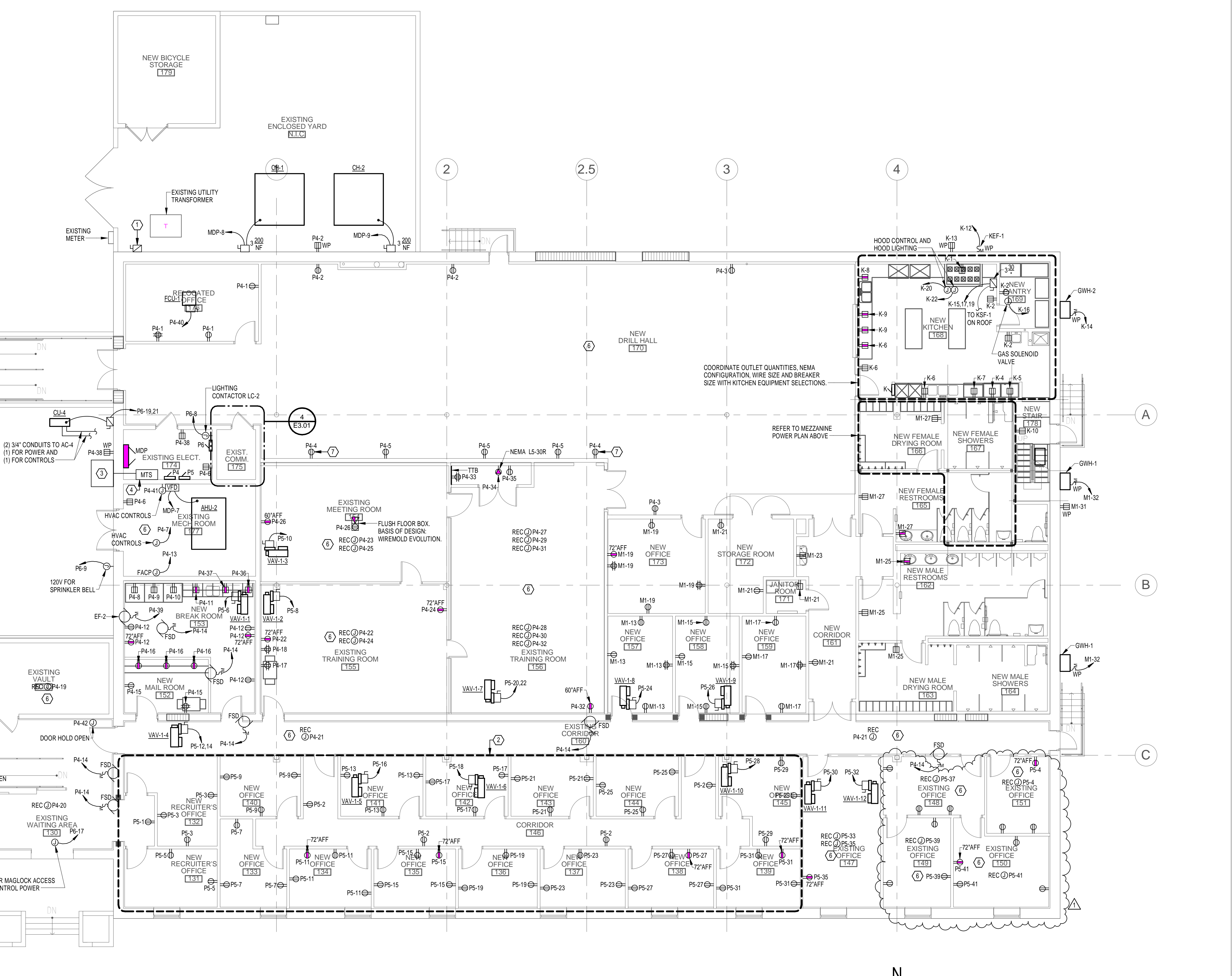
- COORDINATE ANY OUTAGES WITH OWNER.
- FCU-1 AND FCU-2 DISCONNECTS ARE INTEGRAL TO EQUIPMENT.

CODED NOTES:

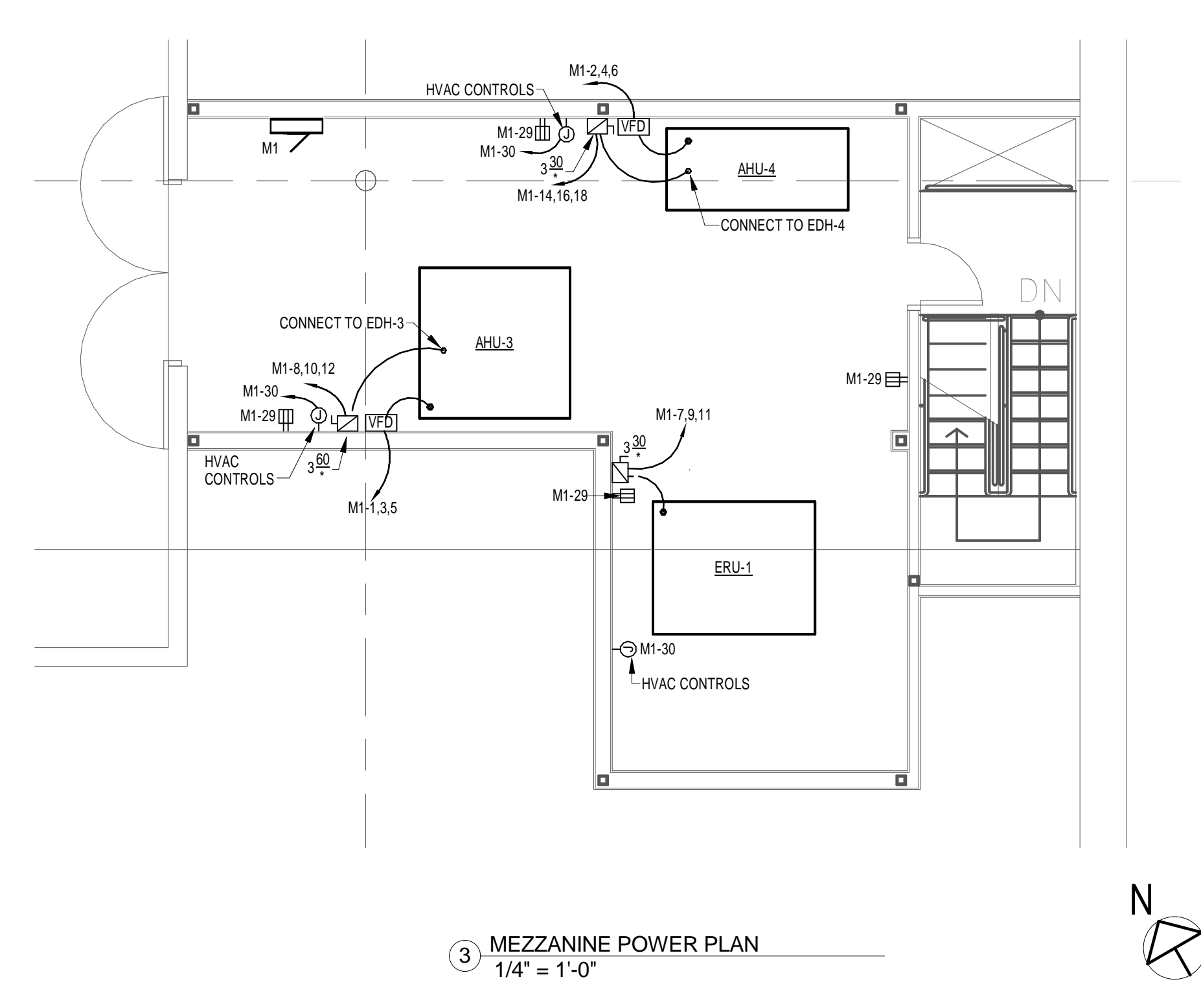
- NEW SERVICE ENTRANCE FUSED DISCONNECT SWITCH. INTERCEPT EXISTING UNDERGROUND CONDUIT.
- CONNECT ANY RECEPTACLES LOCATED ON WALLS TO REMAIN (CORRIDOR & EXTERIOR WALLS, ETC.) TO SAME CIRCUIT USED FOR RECEPTACLES IN EACH ROOM.
- NEW GENERATOR DOCKING STATION. REFER TO ONE-LINE DIAGRAM.
- CONNECT FPL UTILITY FEED FROM SERVICE DISCONNECT TO MTS.
- DEDICATED SPACE FOR VERTICAL WIREMOLD TO ABOVE CEILING. SEE DETAILS ON E8.02.
- ELECTRICAL DEVICES WITHIN THIS ROOM ARE EXISTING TO REMAIN. SURFACE MOUNTED DEVICES AND CONDUITS SHALL BE RECESSED AND CONCEALED IN WALLS. CIRCUIT DEVICES TO NEW CIRCUITS IDENTIFIED FOR RECEPTACLES IN EACH ROOM. PROVIDE NEW RECEPTACLES AS SHOWN. DOCUMENT EXISTING RECEPTACLES ON AS-BUILTS.
- POWER OUTLET FOR WIFI ACCESS POINT LOCATED ON SHELF ABOVE CEILING.



4 ENLARGED EXIST COMM 175 - POWER
1/4" = 1'-0"



1 FIRST FLOOR POWER PLAN
1/8" = 1'-0"



3 MEZZANINE POWER PLAN
1/4" = 1'-0"

SEAL

Architect:
GURRI MATUTE PA
 5001 S.W. 14 CT, Suite 208
 Miami, Florida 33155
 Telephone (305) 661-0069
 Fax (305) 661-0069
 JOSE G. MATUTE, AIA, CGC, LEED @ AP
 License No. # AR 0014415
 Certificate No. # AA 0002454

Civil Engineer
Avino and Associates, Inc.
 1350 S.W. 57 Ave, Suite 207
 West Miami, FL 33144
 Tel: (305)245-5030
 Fax: (305)245-5033
 Jorge R. Avino, P.E., PSM
 License No. PE 22207
 John W. Riner, P.E.
 License No. EB 5098
 Certificate No. AA 0002454

Structural, Mechanical,
 Electrical and Plumbing
 Engineer:
**TLC Engineering for
 Architecture**
 874 Dixon Boulevard
 Cocoa, FL 32922
 Tel: (321)636-0274
 Tel: (321)639-8986
 Gary C. Knaeuper
 Licenses No. PE 42788
 James Wainwright
 Licenses No. PE 30343
 John W. Riner, P.E.
 Licenses No. PE 46867
 Certificate No. 00015

Owner:
**STATE OF FLORIDA
 DEPARTMENT OF MILITARY AFFAIRS (DMA)**

State Project #: 207013
 Project Name: **HOMESTEAD NATIONAL GUARD
 ARMORY RENOVATION**
 Building 756, Schweinfurt Rd., Homestead, FL 33092

ISSUE	DATE
PRELIMINARY DESIGN	03-27-13
100% PROGRESS SET	01-31-14
BID SET	03-12-14
1 ADDENDUM 2	03-28-14

DRAWING TITLE
POWER PLAN

DATE: MARCH 9, 2009
 Project No.: 1304.00
 DRAWN: PJM
 CHECK: JWR
 SHEET

E3.01

John W. Riner, P.E.
 Florida License #68667

STATE OF FLORIDA
 DEPARTMENT OF MILITARY AFFAIRS (DMA)



**HOMESTEAD NATIONAL GUARD
 ARMORY RENOVATION**
 Building 756, Schweinfurt Rd., Homestead, FL 33092

State Project #: 207013
 Project Name:

ISSUE	DATE
PRELIMINARY DESIGN	03-27-13
100% PROGRESS SET	01-31-14
BID SET	03-12-14
1 ADDENDUM 2	03-28-14

DRAWING TITLE
POWER PLAN

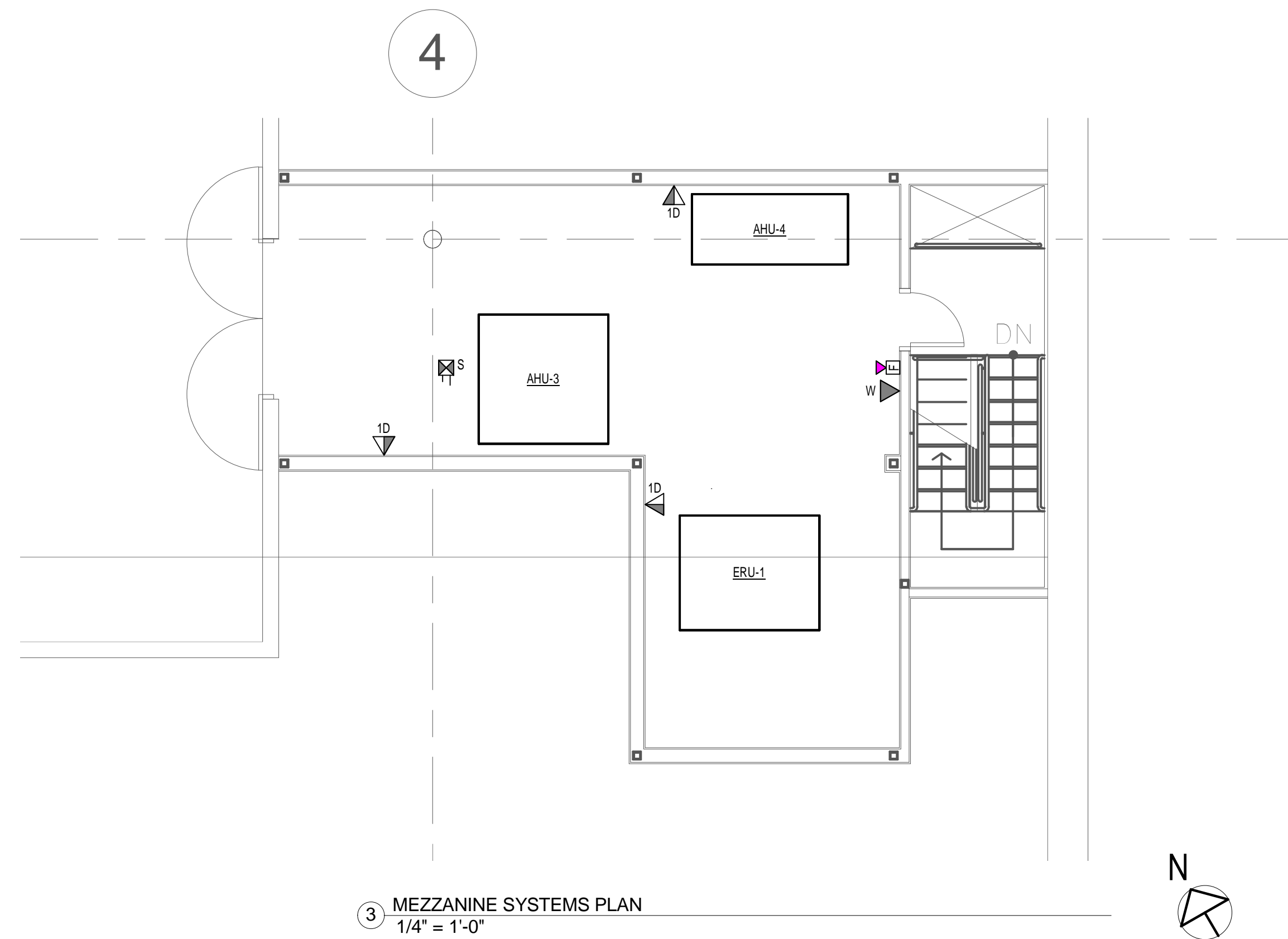
DATE: MARCH 9, 2009
 Project No.: 1304.00
 DRAWN: PJM
 CHECK: JWR
 SHEET

E3.01

C:\Local\Revit\13020 Homestead Ph2 R1\03\13020 DMA Homestead Phase 2 - LOCAL_R1.rvt
 3/28/2014 1:40:29 PM



2 FIRST FLOOR SYSTEMS PLAN
1/8" = 1'-0"



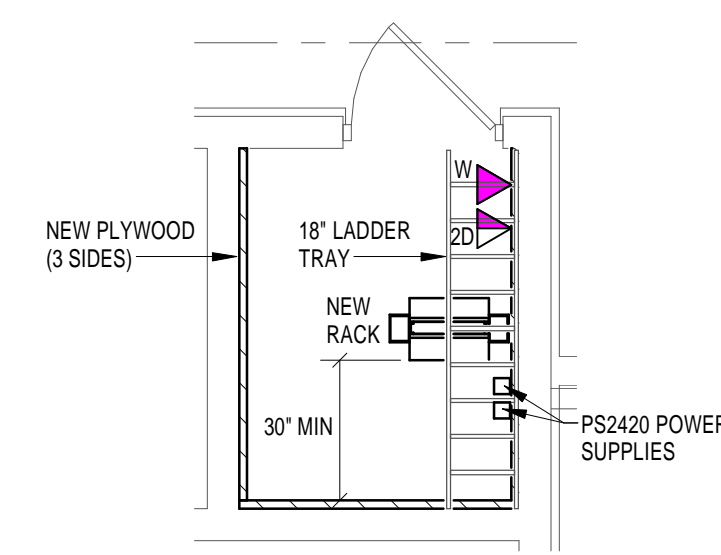
3 MEZZANINE SYSTEMS PLAN
1/4" = 1'-0"

GENERAL NOTES:

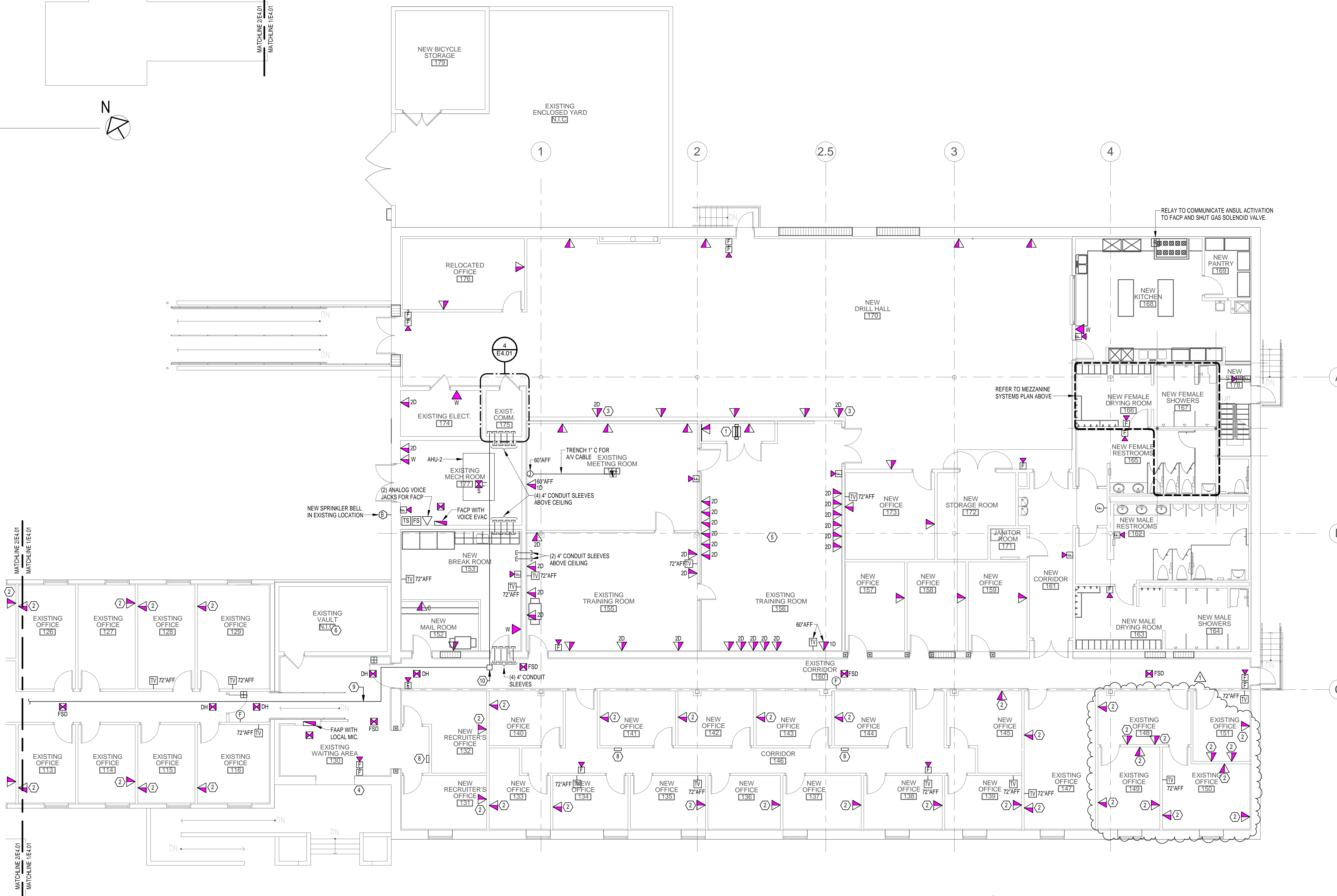
1. LOCATE ALL DATA OUTLETS WITHIN 6 INCHES OF A 120V RECEPTACLE.

CODED NOTES:

1. NEW LOCATION FOR RACK AND TTB SERVING CLASS ROOM.
2. LOCATE NEW PHONE/DATA OUTLETS WITHIN 6 INCHES OF 120V RECEPTACLE. CONFIRM WITH OWNER WHICH WALL THE DATA/VOICE OUTLET IS TO BE INSTALLED IN EACH ROOM PRIOR TO ROUGH-IN.
3. DATA DEVICE FOR WIFI ACCESS POINT ON SHELF ABOVE CEILING. COORDINATE WITH HEIGHT OF SHELF. REFER TO ARCHITECTURAL DRAWINGS.
4. NEW ALPHAONE VIDEO DOOR STATION AND CORBY 6522 ACCESS CONTROL KEYPAD.
5. COORDINATE WITH OWNER WHICH DATA OUTLETS ARE TO BE CONNECTED TO THE PATCH PANEL IN THE CLOSET AT THE BACK OF THE ROOM AND WHICH OUTLETS ARE TO BE CONNECTED INTO THE BUILDING'S NETWORK AT THE MAIN COMM ROOM.
6. PROVIDE ONE ANALOG PHONE LINE BACK TO EXISTING COMM ROOM. THE ENTIRE PATH SHALL BE IN CONDUIT (1" MIN).
7. ONE CAT 6E DATA CABLE. CONNECT TO EXISTING SWITCH IN SIPR ROOM. CABLE SHALL BE IN CONDUIT (1" MIN) ALL THE WAY BACK TO EXISTING COMM 175. FIELD COORDINATE ROUTING WITH OTHER TRADES.
8. WALL MOUNTED ACCESS CONTROL MASTER STATION, ALPHAONE AX-8MV. MOUNT AT 60" AFF.
9. 2" CONDUIT WITH 25 PAIR COPPER FROM AT&T DEMARK IN ROOM 123 TO EXISTING COMM 175. FIELD COORDINATE ROUTING WITH OTHER TRADES.
10. PULLBOX AS REQUIRED BY NEC.



4 ENLARGED EXIST COMM 175 - SYSTEMS
1/4" = 1'-0"



1 FIRST FLOOR SYSTEMS PLAN
1/8" = 1'-0"

SEAL
John W. Riner, P.E.
Florida License #66867

Architect:
GM DA
GURRI MATUTE PA
5001 S.W. 74 CT, Suite 208
Miami, Florida 33155
Telephone (305) 661-0069
Fax (305) 661-0069
JOSE G. MATUTE, AIA, CGO, LEED, B.A.P.
License No. # AR 0014415
Certificate No. # AA 0002454

Civil Engineer
Avino and Associates, Inc.
1350 S.W. 57 Ave, Suite 207
West Miami, FL 33144
Tel. (305)245-5030
Fax (305)245-5033
Jorge R. Avino, P.E., PSM
License No. PE 22507
Certificate No. EB5098

Structural, Mechanical,
Electrical and Plumbing
Engineer:
TLC Engineering for
Architecture
874 Dixon Boulevard
Cocoa, FL 32922
Tel. (321)636-0274
Fax (321)639-8986
Gary C. Knaeuper
Licenses No. PE 40788
James Wainman
Licenses No. PE 30343
John W. Riner P.E.
Licenses No. PE 66867
Certificate No. 00015

Owner:
STATE OF FLORIDA
DEPARTMENT OF MILITARY AFFAIRS (DMA)

State Project #: 207013
Project Name: HOMESTEAD NATIONAL GUARD ARMORY RENOVATION
Building 756, Schweinfurt Rd., HOMESTEAD, FL 33092

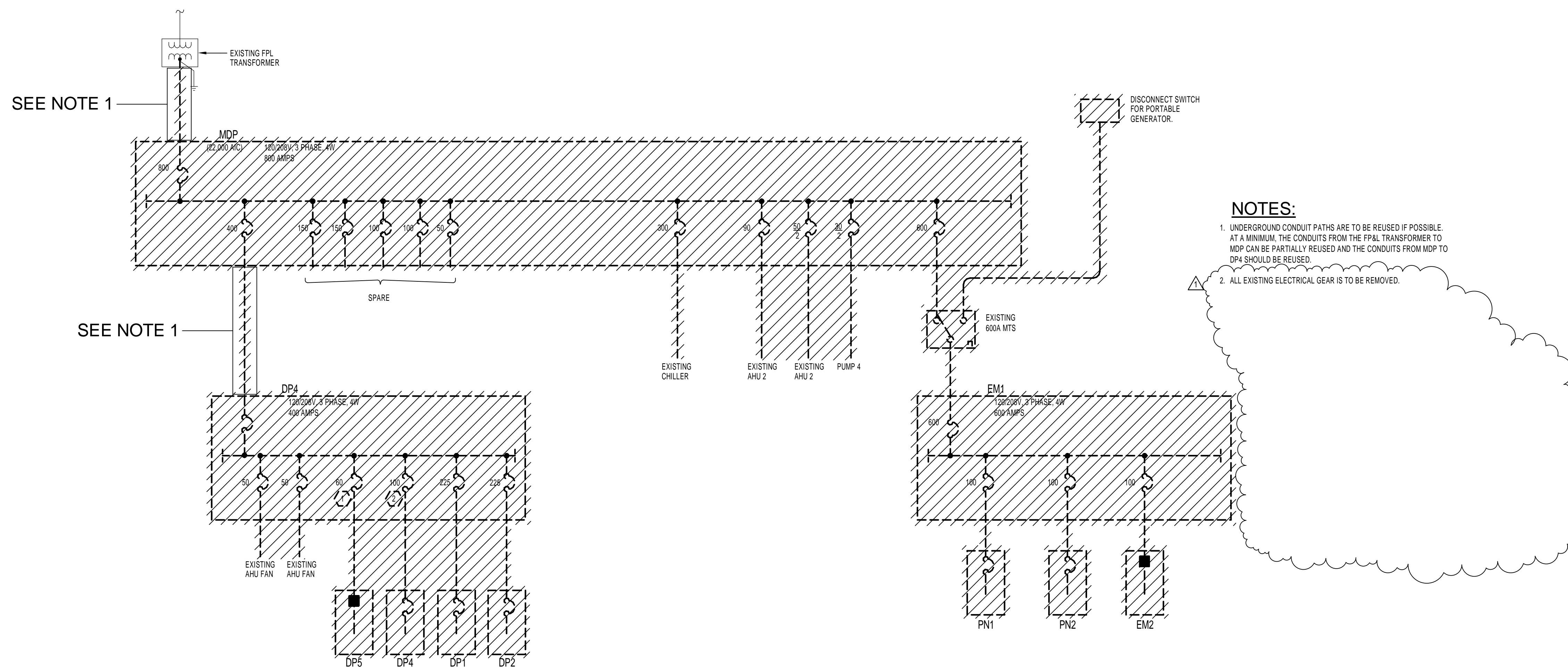
ISSUE	DATE
PRELIMINARY DESIGN	03-27-13
100% PROGRESS SET	01-31-14
BID SET	03-12-14
1 ADDENDUM 2	03-28-14

DRAWING TITLE	
SYSTEMS PLAN	
DATE	MARCH 9, 2009
Project No.	1304.00
DRAWN	PJM
CHECK	JWR
SHEET	

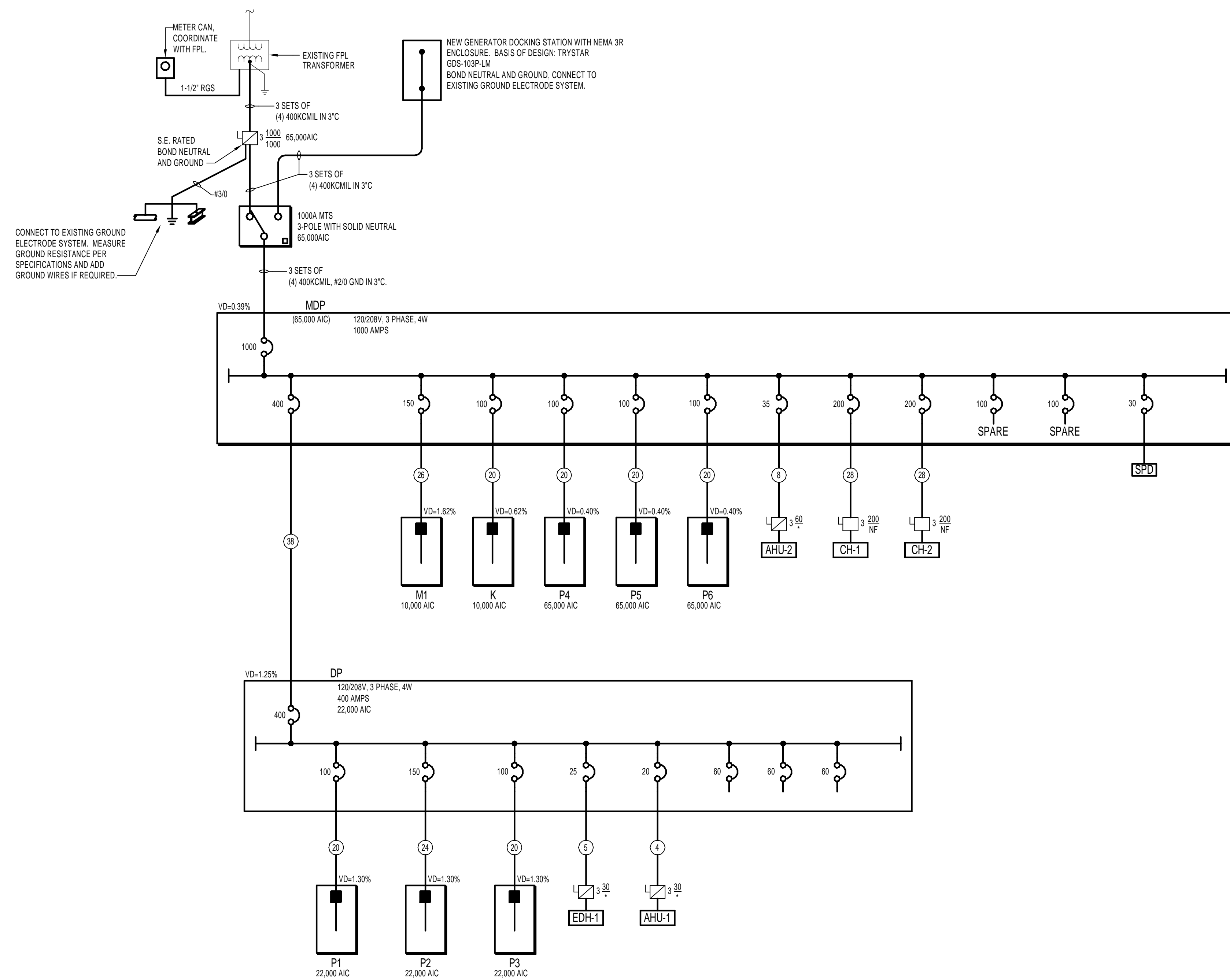
E4.01

C:\Local\Revit\13029\Homestead Ph2 R 1305\3029 DMA Homestead Phase 2 - LOCAL_R13.rvt

3/28/2014 1:40:31 PM



EXISTING ELECTRICAL ONE-LINE DIAGRAM - BUILDING A
SCALE: N.T.S.



NEW ELECTRICAL ONE-LINE DIAGRAM - BUILDING A
SCALE: N.T.S.

DESIG.	FUSE OR CIRCUIT BREAKER RATING @ POLES	NUMBER OF SETS	FEEDER SCHEDULE (CU)		FEEDER SIZE	
			NUMBER OF CONDUCTORS	CONDUCTORS	EQUIP. GRD.	CONDUIT
1	150	1	3	12 AWG	12 AWG	3/4"
2			4			3/4"
3	200	1	3	12 AWG	12 AWG	3/4"
4			4			3/4"
5	300	1	3	10 AWG	10 AWG	3/4"
6			4			3/4"
7	400	1	3	8 AWG	10 AWG	3/4"
8			4			1"
9	500	1	3	6 AWG	10 AWG	1-1/4"
10			4			1-1/4"
11	600	1	3	4 AWG	10 AWG	1-1/4"
12			4			1-1/4"
13	700	1	3	4 AWG	8 AWG	1-1/4"
14			4			1-1/4"
15	800	1	3	3 AWG	8 AWG	1-1/4"
16			4			1-1/4"
17	900	1	3	2 AWG	8 AWG	1-1/4"
18			4			1-1/2"
19	1000	1	3	1 AWG	8 AWG	1-1/2"
20			4			2"
21	1250	1	3	1 AWG	6 AWG	1-1/2"
22			4			2"
23	1500	1	3	1/0 AWG	6 AWG	1-1/2"
24			4			2"
25	1750	1	3	2/0 AWG	6 AWG	2"
26			4			2-1/2"
27	2000	1	3	3/0 AWG	6 AWG	2"
28			4			2-1/2"
29	2250	1	3	4/0 AWG	4 AWG	2-1/2"
30			4			2-1/2"
31	2500	1	3	250 KCMIL	4 AWG	2-1/2"
32			4			3"
33	3000	1	3	350 KCMIL	4 AWG	3"
34			4			3"
35	3500	1	3	500 KCMIL	3 AWG	3-1/2"
36			4			3-1/2"
37	4000	2	3	#30	3 AWG	2"
38			4			2-1/2"

SEAL
John W. Riner, P.E.
Florida License #66867

Architect:
GM DA
GURRI MATUTE PA
5001 S.W. 14 CT, Suite 208
Miami, Florida 33155
Telephone (305) 661-0069
Fax (305) 661-0069
JOSE G. MATUTE, AIA, CGC, LEED AP
License No. # AR 0014415
Certificate No. # AA 0002454

Civil Engineer
Avino and Associates, Inc.
1350 S.W. 57 Ave, Suite 207
West Miami, FL 33144
Tel: (305)245-5030
Fax: (305)245-5033
Jorge R. Avino, P.E., PSM
License No. PE 22007
Certificate No. EB5098

Structural, Mechanical,
Electrical and Plumbing
Engineer:
TLC Engineering for
Architecture
874 Dixon Boulevard
Cocoa, FL 32922
Tel: (321)636-0274
Fax: (321)639-8986
Gary C. Knaeuper
Licenses No. PE 40788
James Wainwright
Licenses No. PE 30343
John W. Riner P.E.
Licenses No. PE 66867
Certificate No. 00015

Owner:
STATE OF FLORIDA
DEPARTMENT OF MILITARY AFFAIRS (DMA)

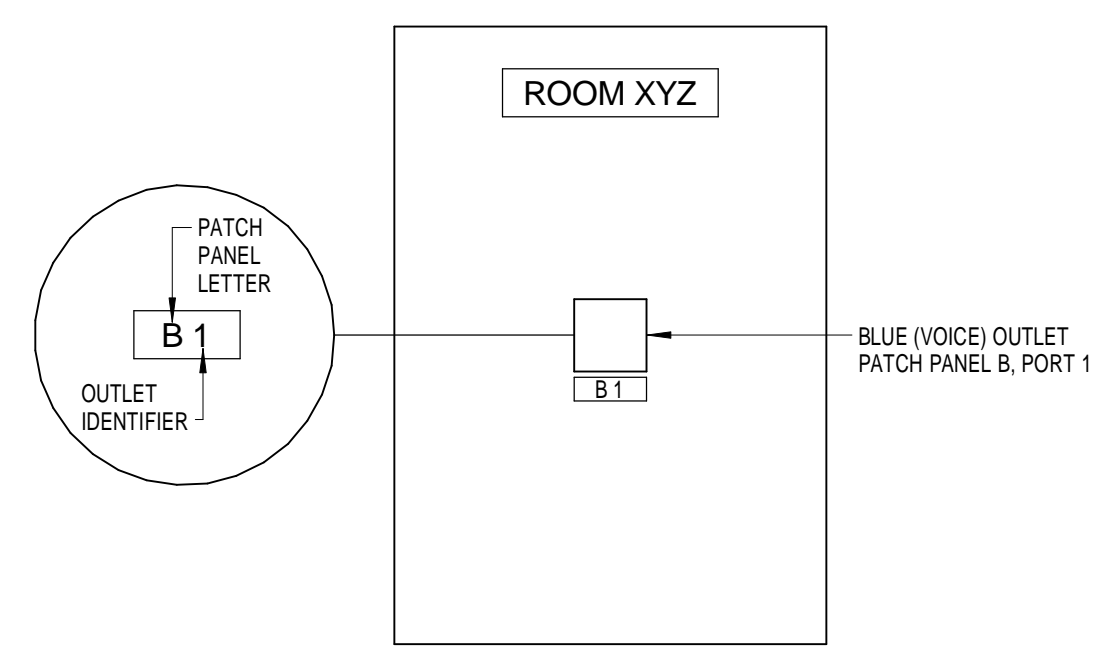
State Project #:
207013
Project Name:
**HOMESTEAD NATIONAL GUARD
ARMORY RENOVATION**
Building 756, Schweinfurt Rd., Homestead, FL
33092

ISSUE	DATE
PRELIMINARY DESIGN	03-27-13
100% PROGRESS SET	01-31-14
BID SET	03-12-14
1 ADDENDUM 2	03-28-14

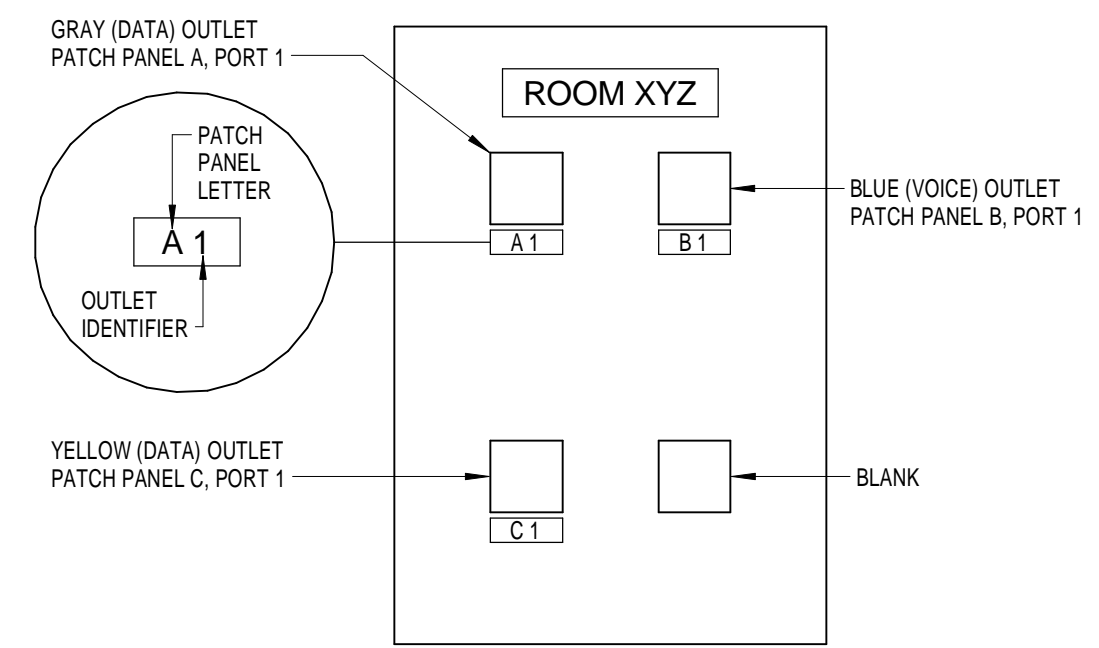
DRAWING TITLE
**ONE-LINE
DIAGRAM**

DATE: MARCH 9, 2009
Project No.: 1304.00
DRAWN: PJM
CHECK: JWR
SHEET

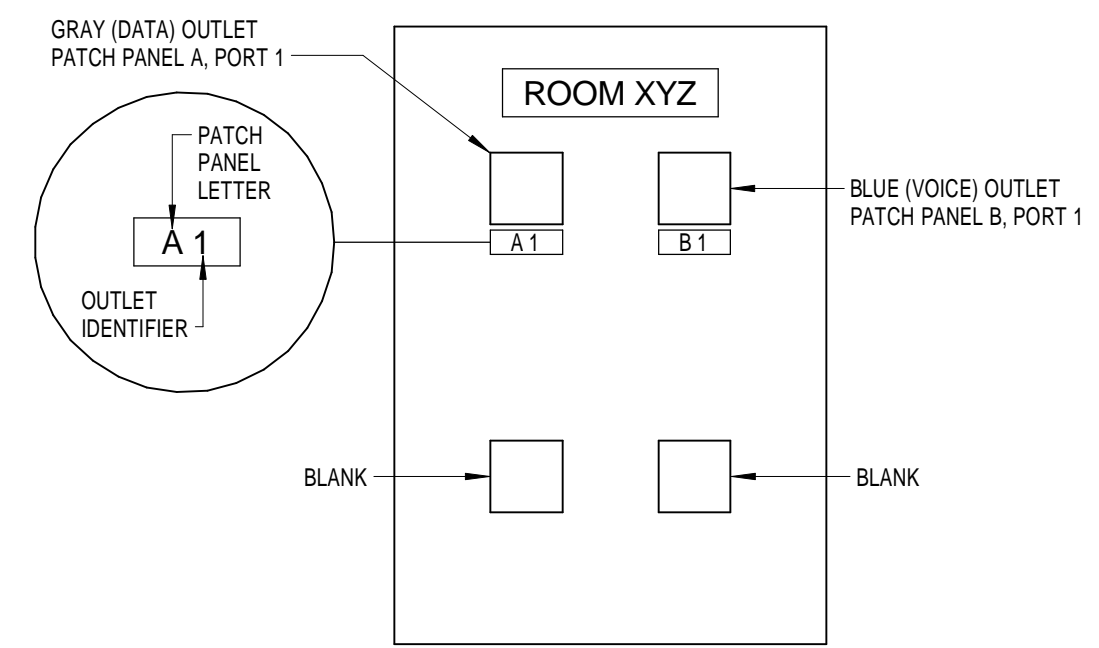
E6.01



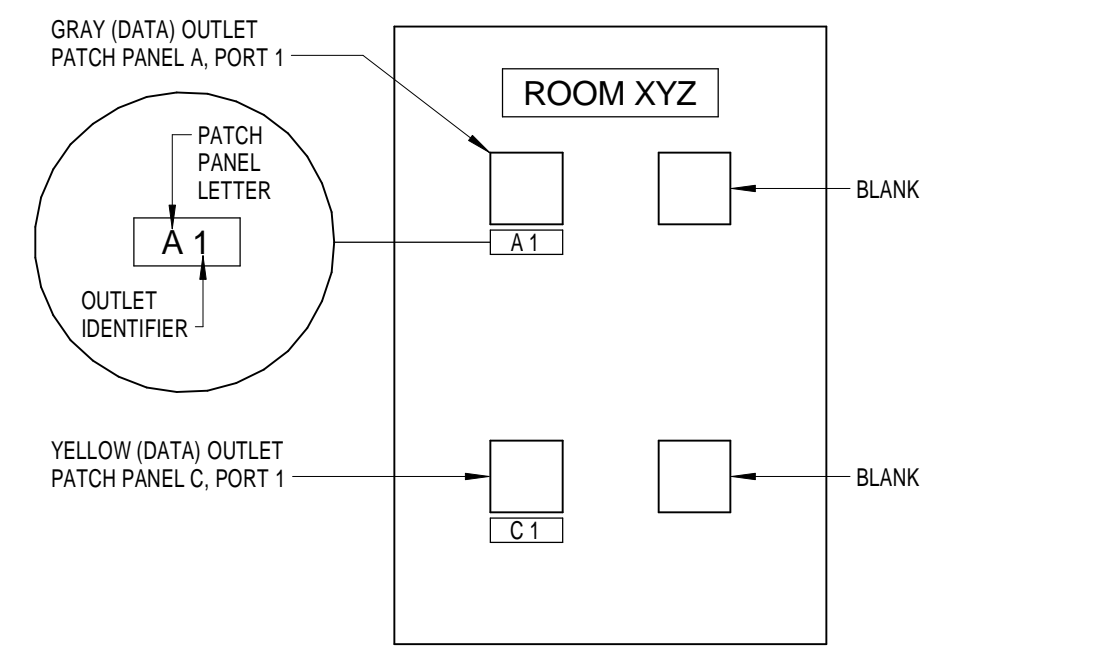
FACE PLATE IDENTIFICATION: WALL PHONE ▼^W



FACE PLATE IDENTIFICATION: 2 DATA / 1 VOICE ▼^{2D/V}



FACE PLATE IDENTIFICATION: 1 DATA / 1 VOICE ▼

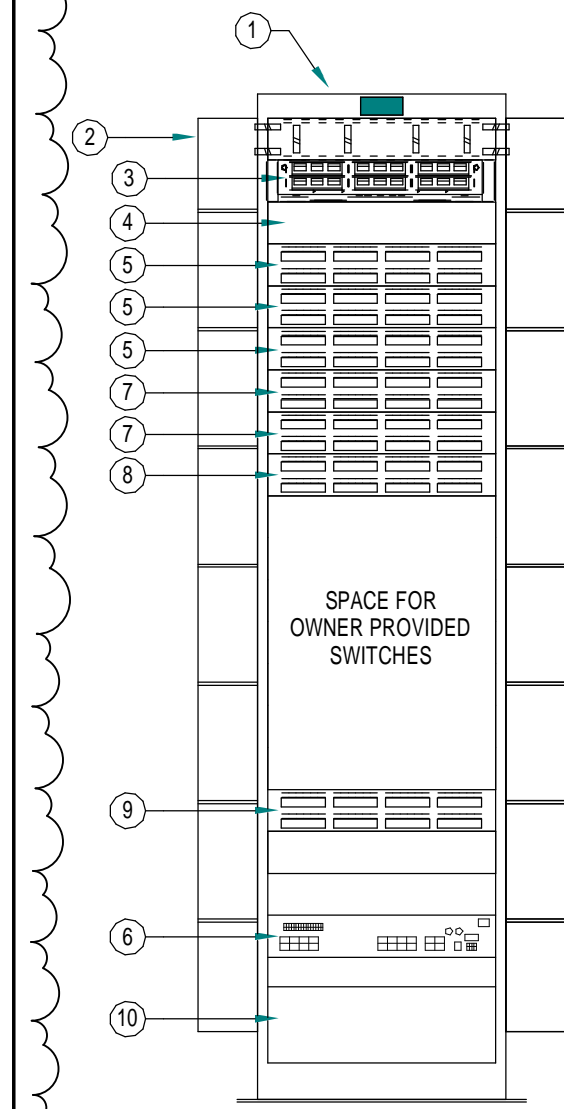


FACE PLATE IDENTIFICATION: 2 DATA ▼^{2D}

NOTE: FOR OUTLET IDENTIFIER, SEE DETAIL THIS SHEET.

FACE PLATE IDENTIFICATION:

No Scale

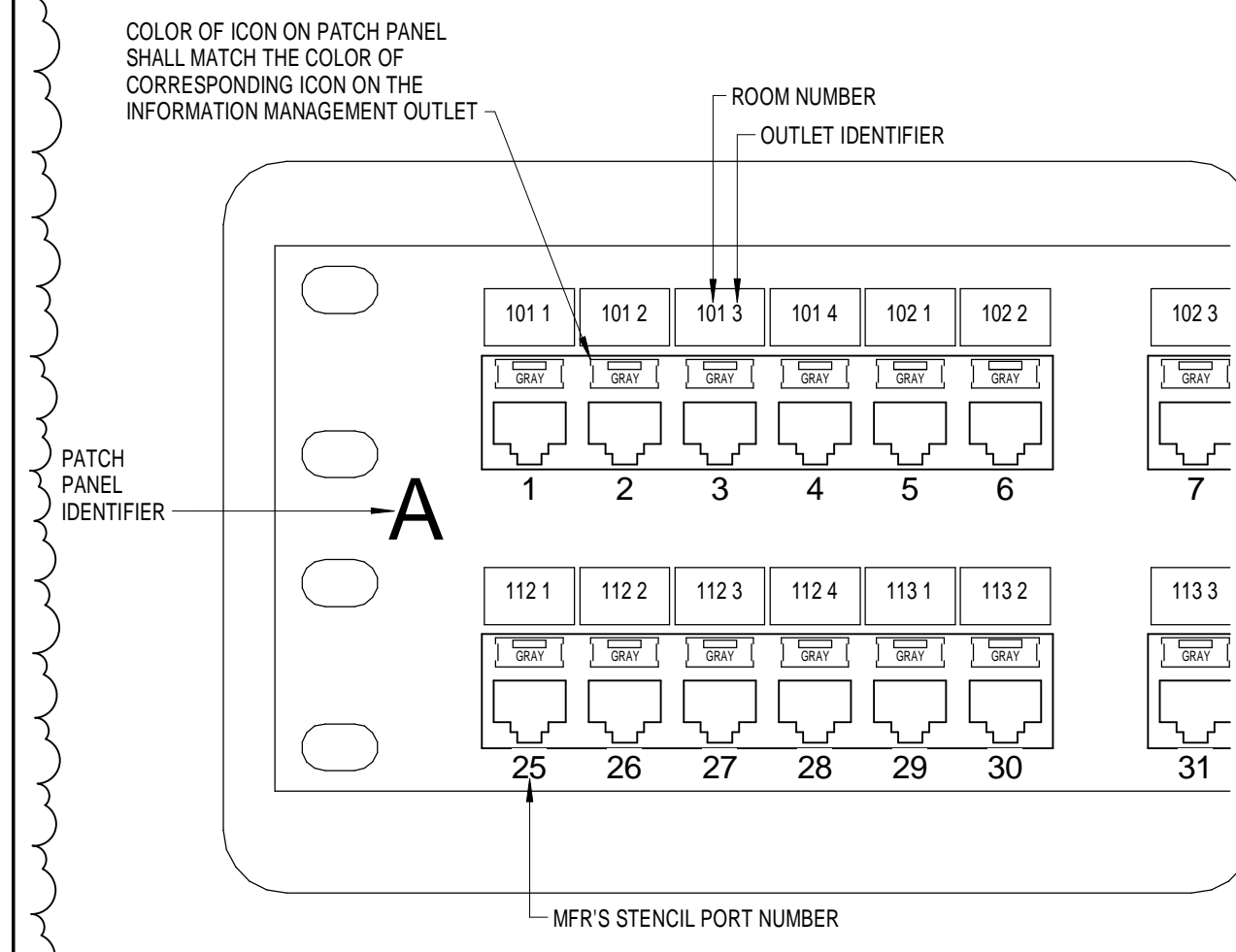


- ELEVATION NOTES:**
- 1 EQUIPMENT RACK FOR FIBER AND COPPER UTP TERMINATIONS.
 - 2 PROVIDE VERTICAL CABLE MANAGEMENT, DOUBLE SIDED, 5" WIDE WITH COVERS FOR FRONT AND BACK.
 - 3 FIBER DISTRIBUTION PANEL (FDP).
 - 4 SPACE FOR EXPANSION FDP.
 - 5 GROUP 'A' PATCH PANELS FOR TERMINATION OF GRAY DATA CABLES.
 - 6 A) PHONE CENTRAL EXCHANGE AX-248C WITH RACK MOUNTING HARDWARE.
 - 7 GROUP 'B' PATCH PANELS FOR TERMINATION OF BLUE VOICE CABLES.
 - 8 GROUP 'C' PATCH PANELS FOR TERMINATION OF YELLOW DATA CABLES.
 - 9 LAST 2RU PATCH PANELS REPRESENTING THE BEP. EXTEND TO BACKBOARD BY WAY OF HOUSE CABLES AND TERMINATE ON BE BLOCKS ADJACENT TO BEP. RED CAT 6 CABLES FOR ANALOG LINES WILL BE INSTALLED ON THE RIGHT HAND SIDE OF THE BEP PP.
 - 10 RACK MOUNTED UPS.

TELECOMMUNICATIONS EQUIPMENT RACK ELEVATION

No Scale

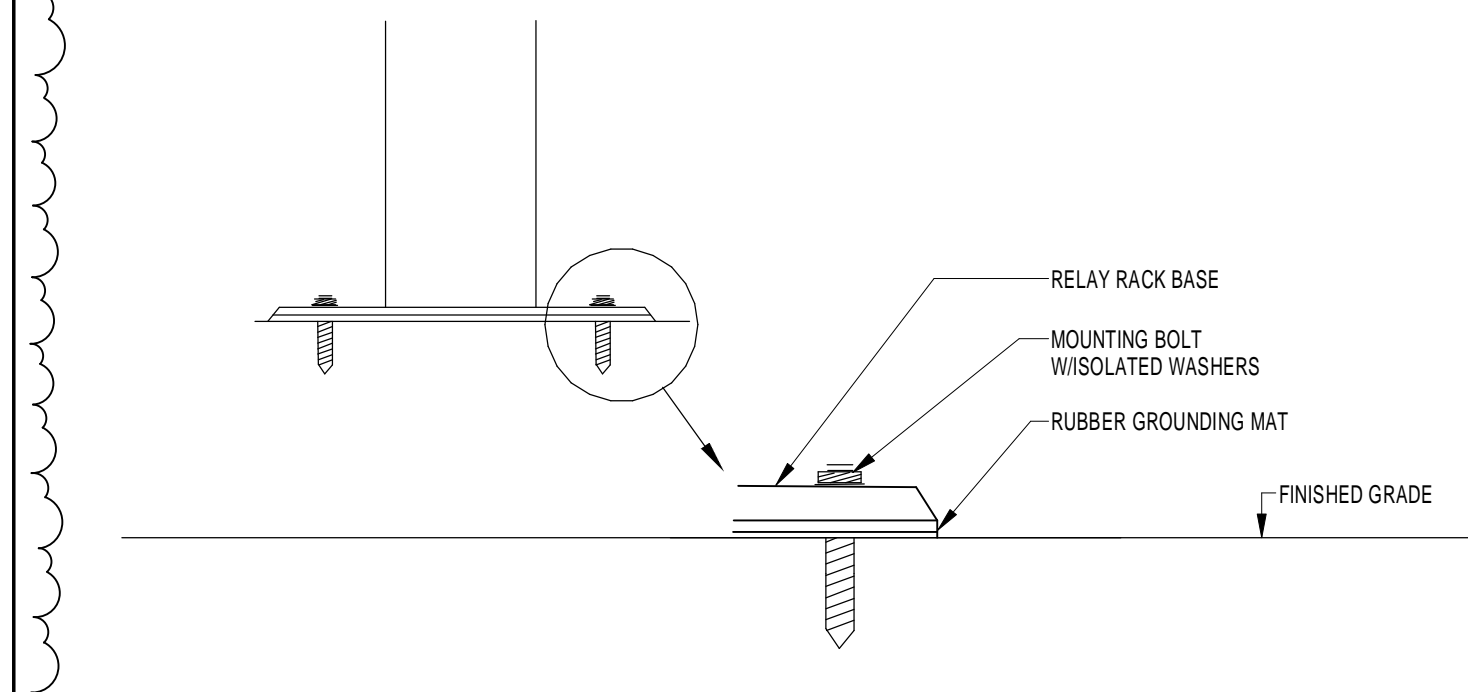
7



TYPICAL PATCH PANEL LABEL DETAIL

No Scale

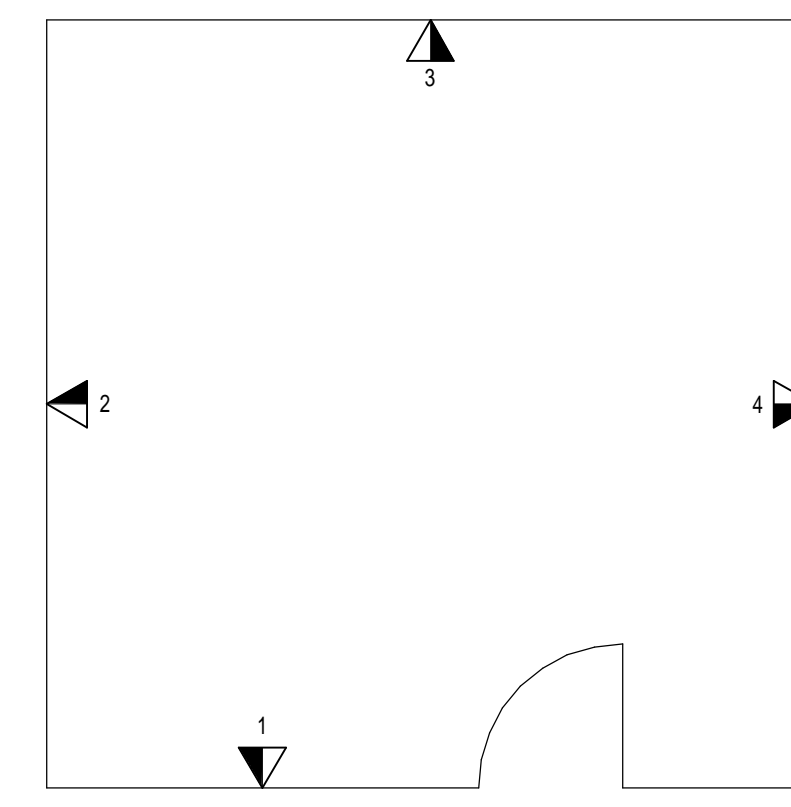
8



FLOOR RACK MOUNTING ON SLAB

No Scale

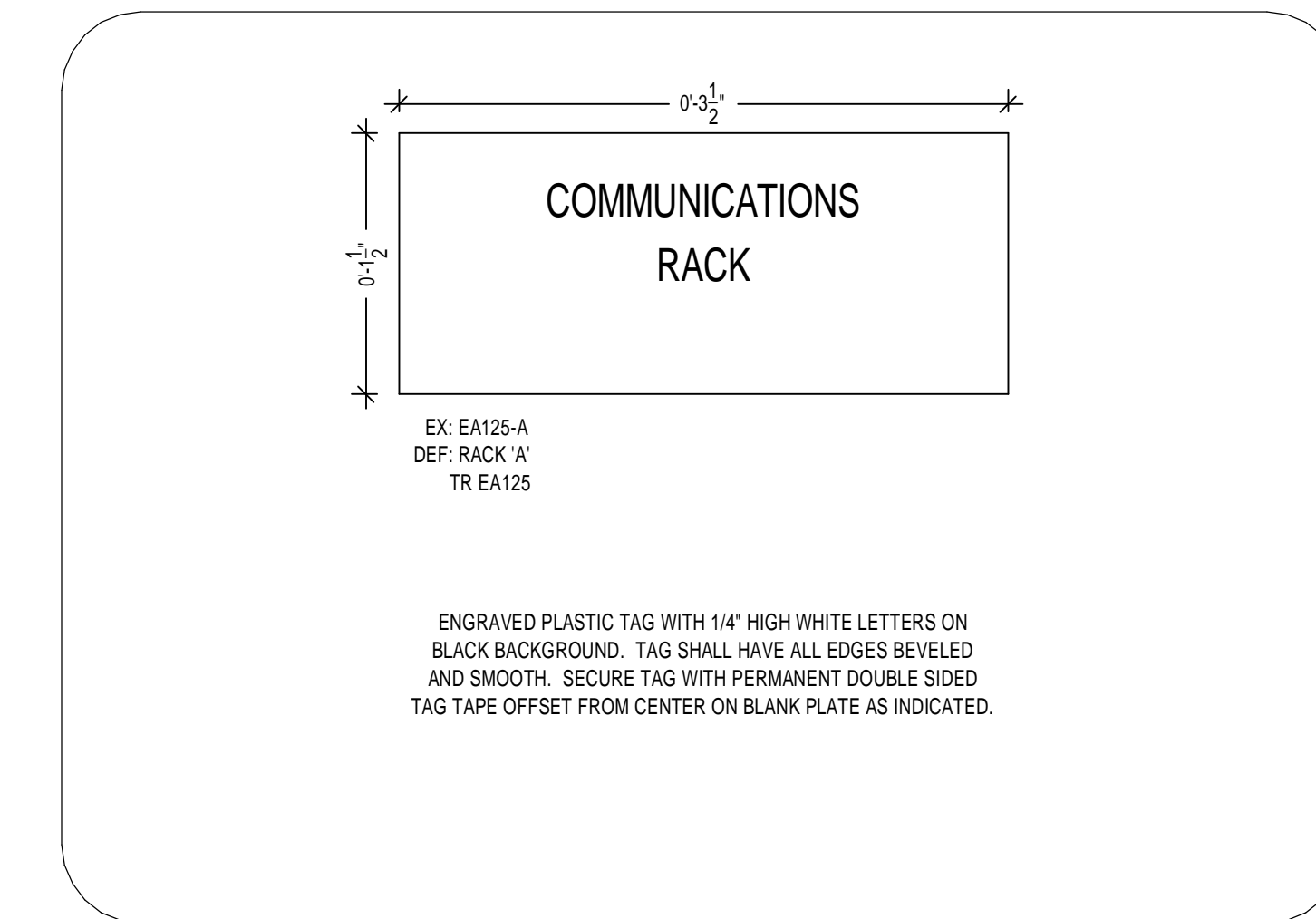
9



OUTLET IDENTIFIER

No Scale

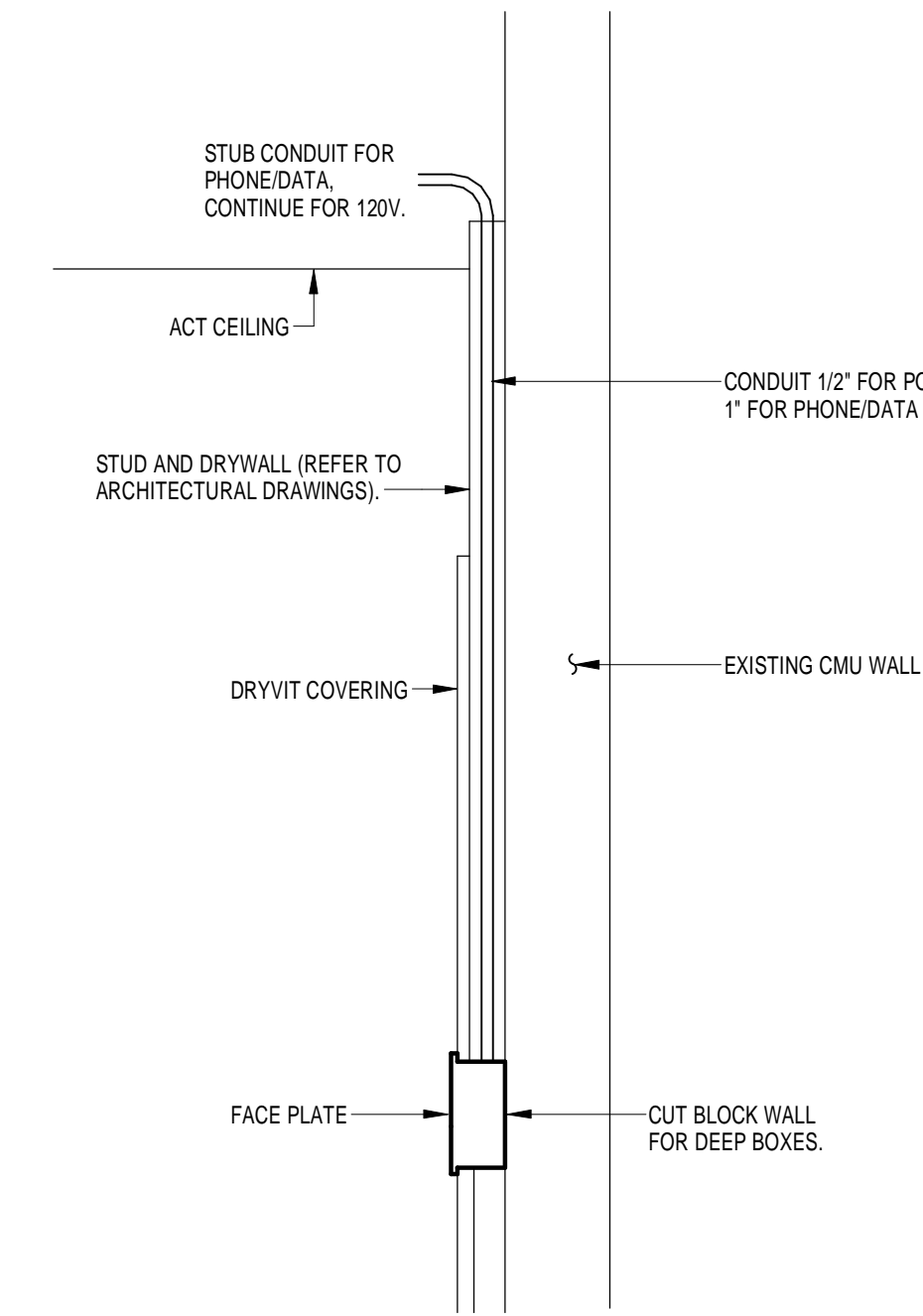
4



TYPICAL RACK LABEL DETAIL

No Scale

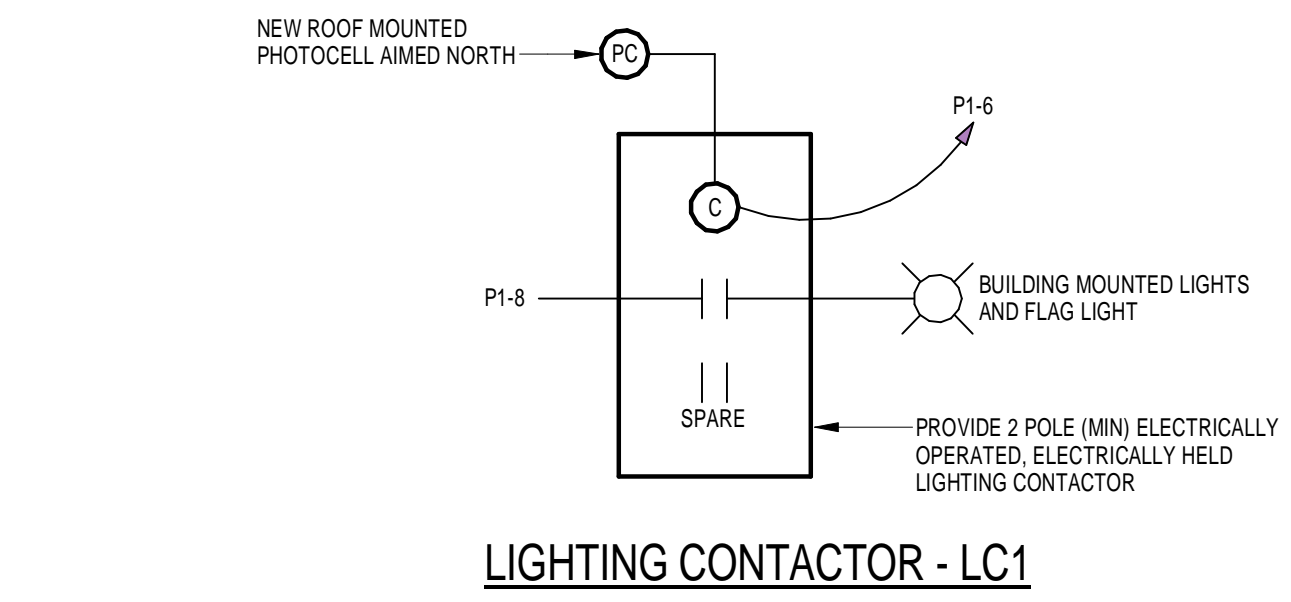
5



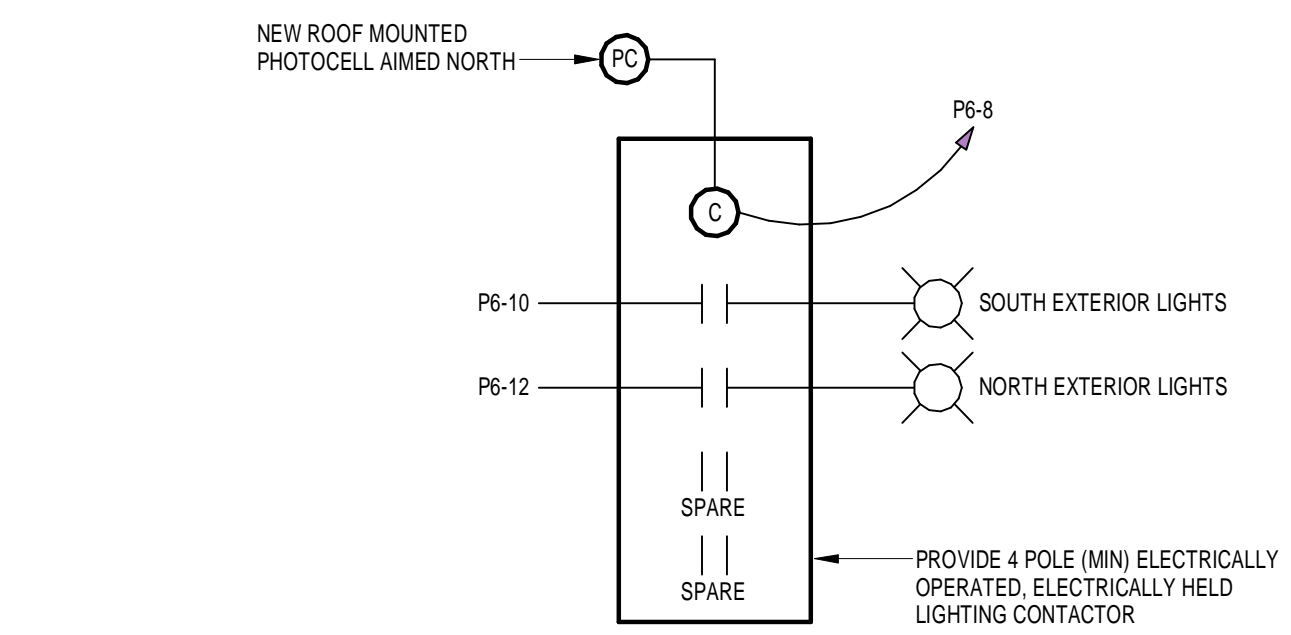
DEVICE INSTALLATION IN DRILL HALL

No Scale

6



LIGHTING CONTACTOR - LC1

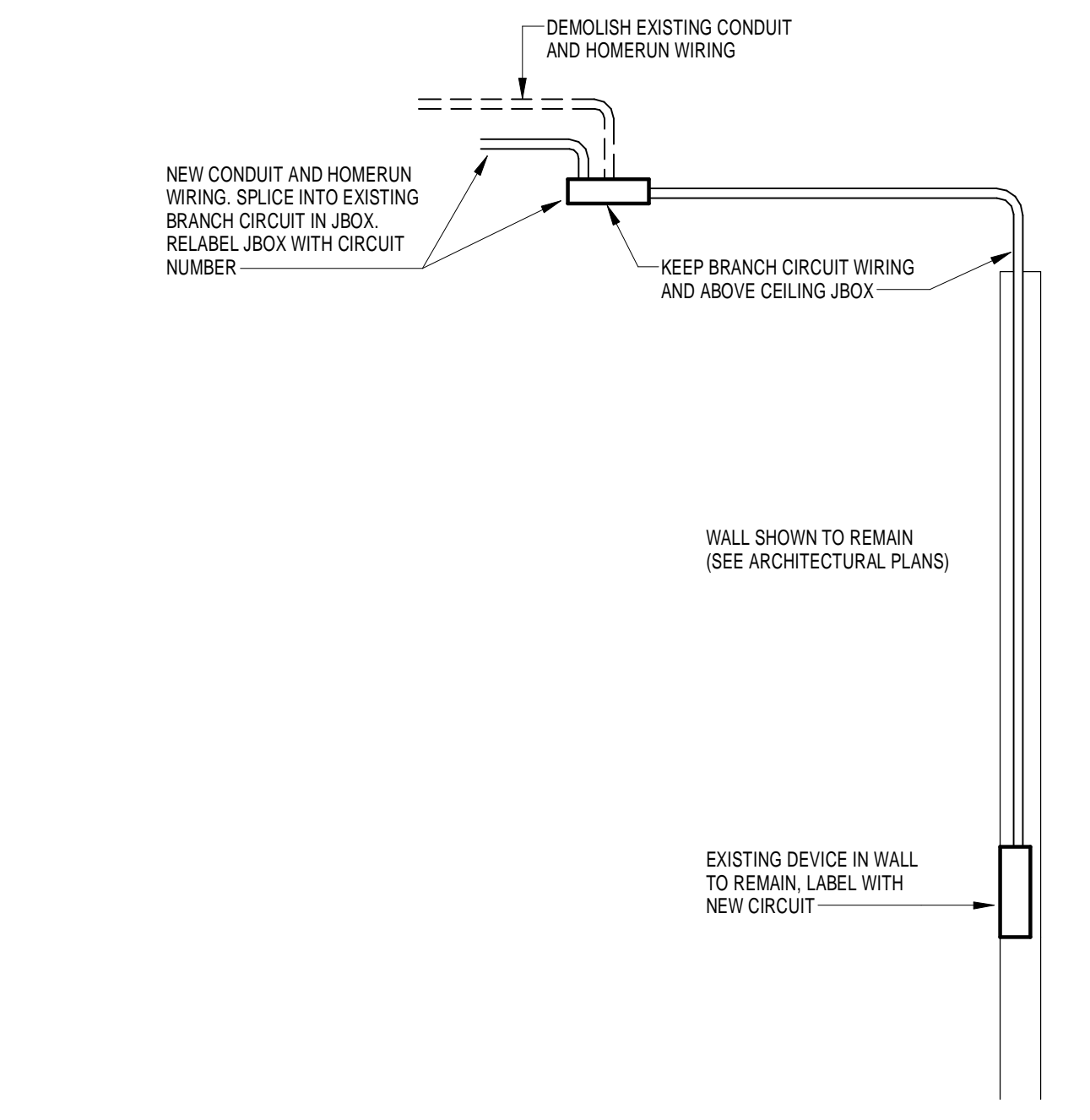


LIGHTING CONTACTOR - LC2

LIGHTING CONTACTORS - LC1 AND LC2

No Scale

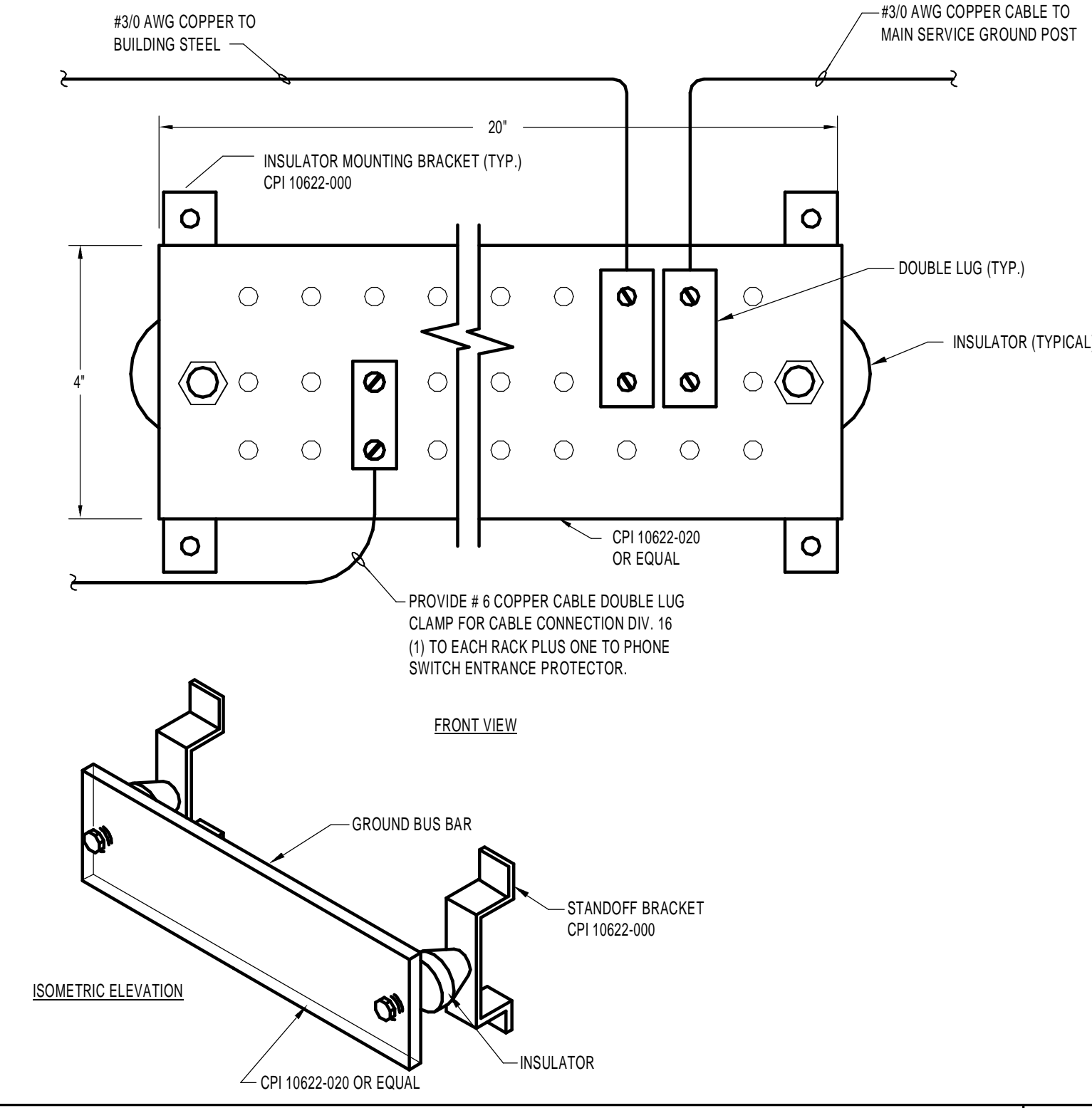
1



WIRING METHOD FOR EXISTING DEVICES LOCATED IN WALLS TO REMAIN

No Scale

2



GROUND BUS BAR

No Scale

3

ISSUE	DATE
PRELIMINARY DESIGN	03-27-13
100% PROGRESS SET	01-31-14
BID SET	03-12-14
1 ADDENDUM 2	03-28-14

DRAWING TITLE
ELECTRICAL DETAILS

DATE: MARCH 9, 2009
Project No.: 1304.00
DRAWN: DS/PJM
CHECK: JWR
SHEET

E8.02