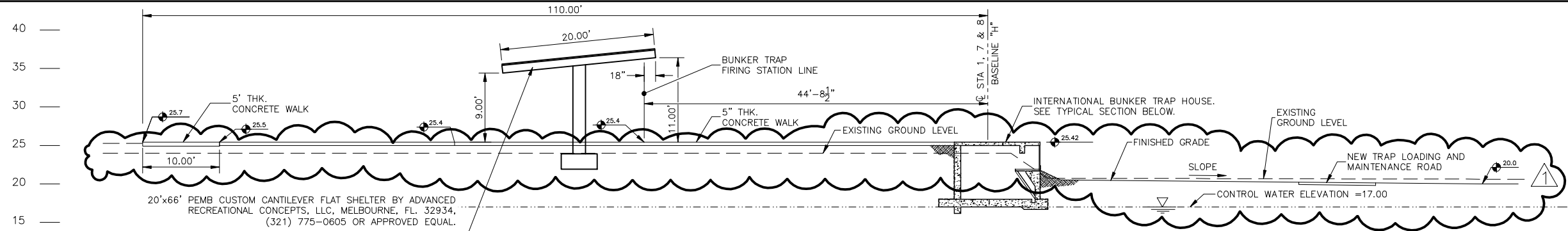


THIS DRAWING IS THE INSTRUMENT OF SERVICE AND PROPERTY OF C. VARGAS & ASSOCIATES, LTD. ANY USE OR REPRODUCTION WITHOUT EXPRESSED WRITTEN PERMISSION OF THIS CORPORATION IS PROHIBITED. ALL RIGHTS OF DESIGN AND INVENTION ARE EXPRESSLY RESERVED.

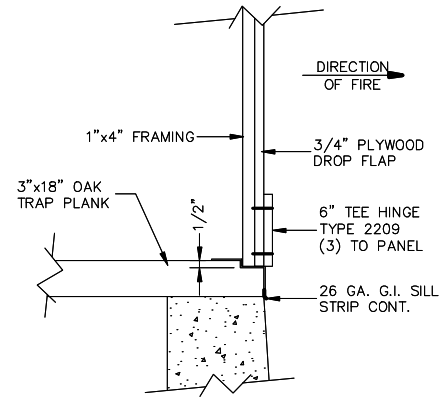


20'x66' PEMB CUSTOM CANTILEVER FLAT SHELTER BY ADVANCED RECREATIONAL CONCEPTS, LLC, MELBOURNE, FL. 32934, (321) 775-0605 OR APPROVED EQUAL.

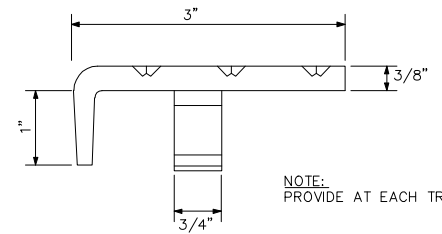
CONTRACTOR SHALL SUBMIT A COMPLETE SET OF SHOP DRAWINGS TO INCLUDE PEMB BUILDING AND FOUNDATIONS. ALL DRAWINGS SUBMITTED SHALL BE SIGNED AND SEALED BY AN ENGINEER REGISTERED IN THE STATE OF FLORIDA.

BUILDING ROOF COLOR SHALL MATCH EXISTING ON-SITE BUILDINGS.

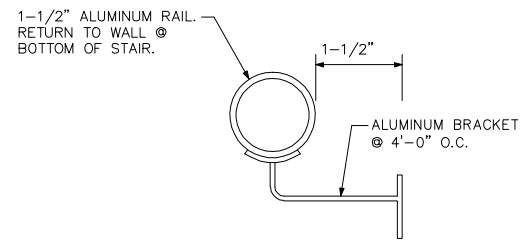
SECTION C  
SCALE: 1" = 8'



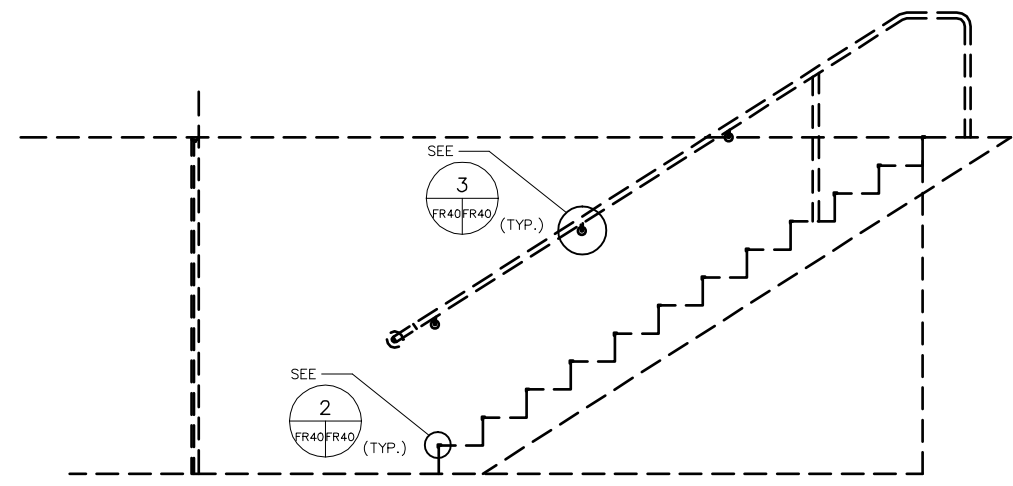
DETAIL C  
SCALE: 1 1/2" = 1'-0"



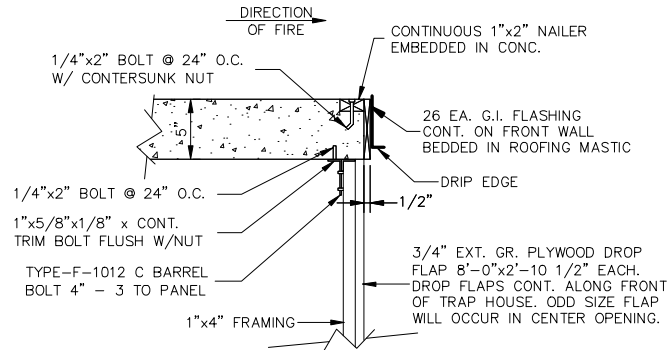
CAST ALUMINUM NOSING DETAIL  
NOT TO SCALE



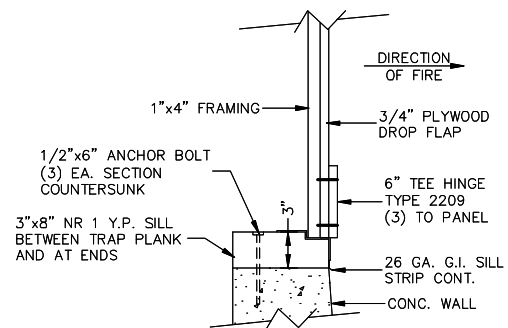
WALL MOUNTED RAILING DETAIL  
NOT TO SCALE



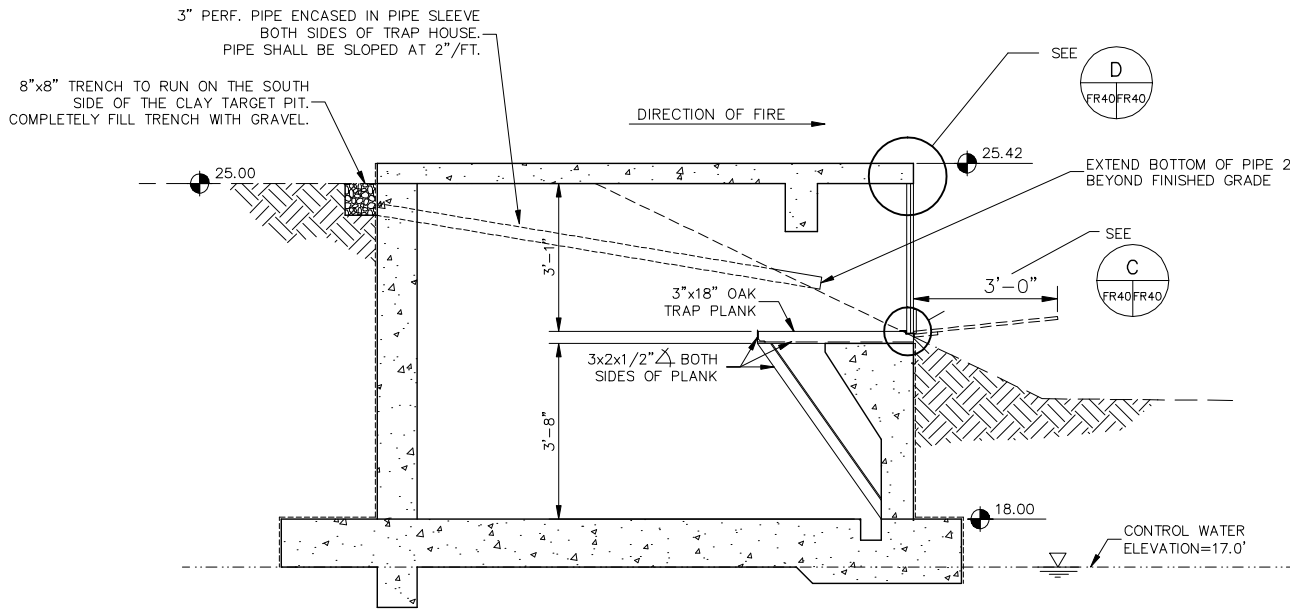
STAIR SECTION G  
SCALE: 1/2" = 1'-0"



DETAIL D  
SCALE: 1 1/2" = 1'-0"



DETAIL E  
SCALE: 1 1/2" = 1'-0"



SECTION A  
SCALE: 1" = 2'-0"

NOTES:  
1. SEE STRUCTURAL DRAWINGS FOR ADDITIONAL DETAILS.

BID SET DATED 06-07-2018

INTERNATIONAL TRAP RANGE SECTIONS AND DETAILS

PALM BEACH COUNTY SHOOTING SPORTS PARK 11 FIELD TRAP LINE PHASE 3C



C. VARGAS & ASSOCIATES, LTD.  
5808 ARCADIAN EXPRESSWAY  
BOCA RATON, FLORIDA 33433  
PHONE: (561) 722-2297 FAX: (561) 722-2297  
CERT. OF AUTH. NO.00002778

DRAWN BY: \_\_\_\_\_ DATE: \_\_\_\_\_  
CHECKED BY: CLARK VARGAS, P.E. REC. ENGR. NO. 16297  
SUBMITTED BY: \_\_\_\_\_ DATE: \_\_\_\_\_  
C.A.D.D. FILE  
PROJECT NO. 17006.01  
SHEET  
70 OF \_\_\_\_\_

FR-40