



FLORIDA FISH AND WILDLIFE CONSERVATION COMMISSION
620 SOUTH MERIDIAN STREET, ROOM 364
TALLAHASSEE, FLORIDA 32399-1600
(850)488-3427 TELEPHONE
(850)921-2500 FAX

INVITATION TO BID: FWC 13/14-89

TITLE: CATTLE GRAZING ON DINNER ISLAND RANCH WILDLIFE MANAGEMENT AREA, WEST SIDE

INVITATION TO BID/BIDDER ACKNOWLEDGMENT FORM

Purpose: The intent of this bid is to obtain competitive pricing for the short-term cattle grazing contract for the west side of Dinner Island Ranch WMA, per the specifications contained herein. Only responsive and responsible Contractors will be considered for award of this ITB.

Responsive: To be responsive a bid must constitute a definite, firm, unqualified and unconditional offer to meet all of the material terms of this ITB. Material terms are those that could affect the price, quantity, quality, or delivery. Also included as material terms are those which are clearly identified in this ITB and which, for reasons of policy, must be complied with at risk of bid rejection for non-responsiveness.

Non Responsive: Any submission that does not comply with this ITB in any way, does not contain all the properly signed forms, supplements or deviates from the Bid requirements or has an incomplete Price Sheet may be considered nonresponsive at the discretion of Procurement Manager.

Responsible Companies: The Commission shall only consider responsible companies. Responsible companies are those that have, in the sole judgment of the Commission, the financial ability, experience, resources, skills, capability, reliability and business integrity necessary to perform the requirements of the contract. The Commission may also consider references and quality to determine the responsibility of the bid. The Commission reserves the right to use any information, whether supplied through the Bidder's submission or otherwise obtained, in determining responsibility.

Rejection of Bids: The Commission reserves the right to reject any and all bids and to waive any informality in the submissions received in response to this ITB. The Commission reserves the right to consider all information, whether submitted or otherwise, to determine responsiveness and responsibility and to reject bids accordingly.

Name of Business: _____

Contact Person Name: _____

Business Address: _____

City: _____ State: _____ Zip code: _____

Phone: _____ Fax: _____ E-Mail: _____

Federal Employer Identification Number (FEID): _____

The undersigned attest to the following:

"We understand all of the terms, conditions and the specifications contained herein and agree to abide by all of the terms, conditions and the specifications in their entirety. We have examined the site in reference to the specifications contained within this ITB and have familiarized ourselves with the entire site and have examined carefully the extent of the work that is needed.

Authorized Signature (Manual): _____

Authorized Signature Name (Typed) and Title: _____

FLORIDA FISH AND WILDLIFE CONSERVATION COMMISSION



FWC 13/14-89

INVITATION TO BID CALENDAR OF EVENTS

SCHEDULE	DUE DATE	METHOD
Bid Advertised	February 17, 2014	Posted on the Vendor Bid System: http://vbs.dms.state.fl.us/vbs/main_menu
MANDATORY Pre-Bid Conference	March 11, 2014 @11:00 a.m.	See Pre-Bid Conference Clause
Deadline for Questions	Must be received PRIOR to: March 14, 2014 @5:00 p.m.	See Deadline for Questions Clause
SEALED BIDS DUE AND OPENED (REMEMBER: Bid Number should be clearly marked on envelope)	Must be received PRIOR to: March 27, 2014 @2:00 p.m.	Submit BEFORE the due date and time to the following address: Florida Fish & Wildlife Conservation Commission Attn: Purchasing 620 S. Meridian St., Room 364 Tallahassee, Florida 32399-1600
Anticipated Date of Intended Award	April 3, 2014	Posted on the Vendor Bid System: http://vbs.dms.state.fl.us/vbs/main_menu

FWC 13/14-89
BIDDER SUBMITTAL CHECKLIST

The following items are required to be submitted to qualify the Bidder as a “responsive” Contractor to be considered for an award. Failure to submit any of the following documentation may result in a Contractor being declared “non-responsive”.

- _____ Completed & signed Invitation to Bid/Bidder Acknowledgment form
- _____ Completed & signed Price Sheet
- _____ Completed & signed References form
- _____ Completed & signed Attachment B - Certifications and Assurances
- _____ Completed & signed Addendum Acknowledgment forms (if applicable)

**FWC 13/14-89
GENERAL CONDITIONS**

The Florida Fish and Wildlife Conservation Commission's (FWC or Commission) mission is to manage fish and wildlife resources for their long-term well-being and the benefit of people. The Commission administers six major programs including habitat and species conservation, freshwater fisheries management, law enforcement, marine fisheries management, hunting and game management and fish and wildlife research.

A Bidder submitting a bid shall be registered in both the MyFloridaMarketPlace (MFMP) system and Sunbiz system prior to the bid opening (see MYFLORIDAMARKETPLACE and ADDITIONAL LEGAL REQUIREMENT clause). A Bidder may not be considered for an award, if not registered in the MFMP and Sunbiz system. The Bidder's registration address and federal employer identification (FEID) number should match the Bidder's address and FEID number listed on the Bidder Acknowledgment form (page 1).

Certified Minority-owned, Woman-owned and Service-Disabled Veteran Business Enterprises, as certified by the State of Florida Office of Supplier Diversity, are encouraged by the Commission to participate in the bidding process.

Bids from Bidders shall include all necessary equipment to complete the job. The bidder is required to supply all specified documentation when submitting a bid for this project.

Please note: The terms "Contract" and "Purchase Order" are used interchangeably in the document.

TERMS AND CONDITIONS

PUR 1001 and PUR1000 are hereby incorporated by reference. The following terms and conditions take precedence over the PUR1001 and PUR1000 forms where applicable. The Commission objects to and shall not consider any additional terms or conditions submitted by a Bidder, including any appearing in documents attached as part of a Bidder's response. In signing and submitting its bid, a Bidder agrees that any additional terms or conditions, whether submitted intentionally or inadvertently, shall have no force or effect. Failure to comply with terms and conditions, including those specifying information that must be submitted with a bid, shall be grounds for rejecting a bid.

The terms and conditions of Exhibit A and Attachments are hereby incorporated into this solicitation. Any contract resulting from this solicitation will include the terms and conditions of this solicitation and the example contract contained in Exhibit A.

TERM

The contract will be effective upon execution of the resulting contract until September 29, 2016.

Project shall be completed by the Contractor by the Completion Date of September 29, 2016. If circumstances constituting Force Majeure have occurred, or if anything occurs beyond the Contractor's control, the Contractor may request in writing an extension of Completion Date. The Contract Manager and the Contract Administrator, upon review of the extension request, will determine and approve if the extension can be made.

CONDITIONS AND SPECIFICATIONS

The bidder is required to examine carefully the conditions and specifications of this bid and to be thoroughly informed regarding any and all requirements of the conditions and specifications.

MANDATORY PRE-BID CONFERENCE

A mandatory pre-bid conference will be held at Dinner Island WMA on the date and time specified in the Calendar of Events (Page 2). The purpose of the pre-bid conference/Site Visit Meeting is to discuss the

contents of this ITB and to accept verbal questions from Bidders concerning the project. **Bidders must attend this pre-bid conference in order to submit a bid. Failure to attend the entire conference, from the time it is called to order to the time it is adjourned, shall disqualify a potential bidder.** The FWC will make a reasonable effort to answer verbal questions asked at the pre-bid conference, however, Bidders should clearly understand that verbal discussions held at the pre-bid conference shall not be binding on the FWC, and the FWC will only issue an official written response to verbal questions subsequently submitted in writing in accordance with the Deadline for Questions clause below.

Exit from I-75 near Fort Myers exit east onto SR 80. Follow SR 80 approximately 44 miles to CR 833. Turn south onto CR 833 and drive approximately 19 miles (if you get to the CR 833/CR 846 intersection you have gone ½ mile too far). Turn west onto the office driveway. Office is the first building on the left (next to a log cabin). The address is 20105 CR 833, Clewiston, FL 33440.

Contact person for Pre-Bid Conference:

Florida Fish & Wildlife Conservation Commission
Paden Woodruff, Contract Manager
620 South Meridian Street, Room 364
Tallahassee, Florida 32399-1600
paden.woodruff@myfwc.com

DEADLINE FOR QUESTIONS

Any questions from Bidders that require an official FWC answer concerning this project shall be submitted in writing to the Procurement Manager identified below. Questions must be received no later than the date and time specified in the Calendar of Events (Page 2). Questions may be sent via e-mail, hard copy by mail, or facsimile. It is the responsibility of the bidder to confirm receipt of questions if needed.

If questions are received, an addendum will be issued and shall be posted on the Vendor Bid System internet site at the following address: http://vbs.dms.state.fl.us/vbs/main_menu

Questions shall be directed to:

Florida Fish & Wildlife Conservation Commission
Tallahassee Purchasing Office
Attn: Sharita Newman, Procurement Manager
620 South Meridian Street, Room 364
Tallahassee, Florida 32399-1600
850-488-3427
sharita.newman@myfwc.com

LIMITATION ON BIDDER CONTACT DURING SOLICITATION PERIOD

Bidders to this solicitation or persons acting on their behalf may not contact, between the release of the solicitation and the end of the 72-hour period following the agency posting the notice of intended award, (Note the 72 hour posting period excludes Saturdays, Sundays, and state holidays) any employee or officer of the executive or legislative branch concerning any aspect of this solicitation, except in writing to the procurement manager or as provided in the solicitation documents. Violation of this provision may be grounds for rejecting a response.

BIDDER SPECIFICATION INQUIRIES

If the specifications of this Invitation to Bid (ITB) could restrict potential Bidder competition, the Bidder has 72 hours within which to request to the Commission that the specification(s) be changed. The

Contract Administrator must receive the written request within 72 hours after the posting date of the ITB.

Requested changes to the Commission's specifications shall include the Bidder's concerns regarding restricting competition, provide detailed justification, and provide recommended changes to the specification(s). A Bidder's failure to request changes by the prescribed date and time shall be considered to constitute the Bidder's acceptance of the Commission's specifications.

The Commission shall determine what change(s) to the ITB is acceptable to the Commission. If accepted, the Commission shall issue an addendum reflecting the change(s) to the ITB, which shall be posted to the Vendor Bid Advertisement System, internet site http://vbs.dms.state.fl.us/vbs/main_menu .

It is up to the bidder to ensure that everything is included as required by the Commission's Purchasing Office. It is not the Commission's responsibility to mail or fax any forms to a potential Contractor. Bid packet information may also be requested from The Commission's Purchasing Section by calling 850-488-3427 or by FAXING a request to 850-921-2500. Please have bid number and Bidder information available when requesting any information.

BID OPENING LOCATION

The public opening of this bid will be conducted at the date and time specified in the Calendar of Events (Page 2), at the Florida Fish and Wildlife Conservation Commission, **Tallahassee Purchasing Office**, Room 364, 620 South Meridian Street, Tallahassee, Florida, 32399-1600. **BIDS RECEIVED AFTER DATE AND TIME SPECIFIED WILL BE REJECTED.**

Any person with a qualified disability shall not be denied equal access and effective communication regarding any bid/proposal documents or the attendance at any related meeting or bid/proposal opening. If accommodations are needed because of a disability, please contact the Purchasing Section at (850) 488-3427 at least three workdays prior to the opening.

MAILING INSTRUCTIONS

All bids shall be submitted in a **SEALED ENVELOPE** addressed to the Florida Fish and Wildlife Conservation Commission, Room 364, 620 South Meridian Street, Tallahassee, Florida 32399-1600. **THE ENVELOPE SHALL BE PLAINLY MARKED ON THE OUTSIDE WITH: BID NUMBER, DATE AND TIME OF THE BID OPENING. THE COMMISSION IS NOT RESPONSIBLE FOR THE OPENING OF ANY ENVELOPES THAT ARE NOT PROPERLY MARKED.**

BIDDER ACKNOWLEDGMENT

In order for this bid to be valid, the bid must be completed in its entirety, signed by the Bidder and returned, as part of the bid or the bid will be rejected. By affixing your signature to page 1 of the bid, the Bidder hereby states that the Bidder has read all bid specifications and conditions and agrees to all terms, conditions, provisions, specifications, and is currently licensed to do business within the State of Florida, if required by State or Federal Law, for the services or commodities the Bidder will provide the Commission under these bid specifications.

FWC CONTRACT MANAGER

The FWC employee identified below is designated as Contract Manager and shall perform the following on behalf of the FWC:

- review, verify, and approve receipt of services/deliverables from the Contractor;
- submit requests for change orders/amendments/renewals, if applicable;
- review, verify, and approve invoices from the Contractor; and, if applicable, and the Certificate of Contract Completion form; and

- maintain an official record of all correspondence between the Commission and the Contractor and forward the original correspondence to the Tallahassee Procurement Manager for the official file.

The FWC Contract Manager is:

Florida Fish & Wildlife Conservation Commission
Paden Woodruff, Contract Manager
620 South Meridian Street, Room 364
Tallahassee, Florida 32399-1600
paden.woodruff@myfwc.com

VERBAL INSTRUCTION PROCEDURE

Bidders may not consider any verbal instructions as binding upon the Commission. No negotiations, discussions, or actions shall be initiated or executed by the Bidder as a result of any discussion with any Commission employee. Only those communications from the Commission that are in writing, may be considered as a duly authorized expression on behalf of the Commission.

ADDENDUMS

If the COMMISSION finds it necessary to supplement, modify or interpret any portion of the specifications or documents or answer any Bidder questions during the ITB period an addendum shall be posted on the Vendor Bid System internet site. An Addendum Acknowledgment Form will be included with each addendum and shall be signed by an authorized Contractor representative, dated, and returned to the COMMISSION prior to the opening date and time specified in the Calendar of Events. Each Bidder is responsible for monitoring the Vendor Bid System site for new or changing information relative to this procurement. The Commission bears no responsibility for any delays, or resulting impacts, associated with a Bidder's failure to obtain the information made available through the Vendor Bid System. The Vendor Bid System can be reached at the following internet address: http://vbs.dms.state.fl.us/vbs/main_menu

IDENTICAL TIE BIDS

In accordance with Section 287.087, Florida Statutes, preference shall be given to businesses with drug-free workplace programs. If two or more bids which are equal with respect to price, quality, and service are received by the State or by any political subdivision for the procurement of commodities or contractual services, a bid received from a business that certifies that it has implemented a drug-free workplace program shall be given preference in the award process. Contractors must complete the Identical Tie Bid / Drug Free Workplace form (Attachment B) provided and return it with their bid.

AWARDED BID/INSPECTION

The Commission will award the bid to the responsive, responsible bidder which submits the highest bid price. If deemed necessary, an interview with the bidder by the Contract Manager may be required before the bid is awarded.

The Commission reserves the right to inspect the prospective Contractor's materials and background record prior to making an award of the Contract. If the Contract Manager determines the highest bidder does not have sufficient experience, equipment, etc. to meet the specifications of this Invitation to Bid, the Commission reserves the right to reject the bidder and evaluate the next highest bidder.

SUPPORTING/SUPPLEMENTAL INFORMATION

The Commission strongly desires that bidders submit all required technical, specification, and other supporting information with their bid, so that a detailed analysis and determination can be made, by the Contract Manager that the product/service offered meets this ITB's specifications and that other requirements of this ITB have been met. However, provided a bid meets the requirements for a definite, firm, unqualified, and unconditional offer, the Commission reserves the right to request supplemental

information from the bidder, after the bids have been opened, to ensure that the products/services offered completely meet this ITB's requirements. The requirement for such supplemental information will be at the reasonable discretion of the Commission and may include the requirement that a bidder will provide a sample product(s) so that the Commission can make a first-hand examination and determination.

A bidder's failure to provide this supplemental information or the product sample(s), within the time set by the Commission, will cause the Commission to consider the Contractor non-responsive and reject the Contractor's bid.

REFERENCES

Each prospective Bidder shall provide a minimum of three (3) references for similar projects completed. Current contact names and phone numbers shall be included with the bid package.

NOTICE TO PROCEED

The awarded Bidder shall not initiate work under this contract until the required Performance Bond and Insurance have been received by the Commission. The Contractor may begin work once it has received an official written Notice to Proceed from the Contract Manager.

AUTHORIZED COMPENSATION

It is understood and agreed that all compensation under this ITB is specifically limited to the Bidder's bid price accepted by the Commission, and to the specific procedure for payment established in this ITB and the Purchase Order executed pursuant to it. The Commission is not liable for any costs, fees, expenses or any other compensation whatsoever incurred or charged by the Contractor. Thus the Commission is not liable for any costs incurred or charged by the Contractor in anticipation of responding to, or performing work described in, this ITB, including but not limited to equipment or personnel procured by the Contractor in anticipation of such work. The Commission is not responsible to the Contractor for any loss or damages resulting from circumstances unforeseen at the time of publication of this ITB including, but not limited to, those resulting from a "force majeure".

ADDITIONAL LEGAL REQUIREMENT

All corporations seeking to do business with the State shall, at the time of submitting a bid, be on file with the Department of State in accordance with provisions of Chapter 607, Florida Statutes; similarly, partnerships seeking to do business with the State shall, at the time of submitting such bid, have complied with the applicable provisions of Chapter 620, Florida Statutes. For further information on required filing and forms, please go to the following sites: <http://www.sunbiz.org/index.html> or <http://www.dos.state.fl.us/>.

USE OF CONTRACT BY OTHER STATE AGENCIES AND ELIGIBLE USERS

As provided in Chapter 60A-1.047, F.A.C., and Section 287.042(16) F.S., other State of Florida agencies may purchase from the resulting contract of this Invitation to Bid, provided that the Department of Management Services has determined the contract's use is cost effective and in the best interest of the State, and with the Contractor's consent.

Other State of Florida governmental entities and eligible users may also request of the Contractor to be able to use this contract. If the Contractor agrees to other entities to utilize this Invitation to Bid contract, such agencies shall coordinate their use of this contract with the Florida Fish and Wildlife Conservation Commission in order to reduce scheduling conflicts.

CONFIDENTIALITY/PUBLIC RECORDS LAW

Bidders are cautioned that Florida law generously defines what constitutes a public record and grants broad rights of public access to those records; see, for example, section 119.07 of the Florida Statutes. If a Bidder believes that its response contains information that is confidential or exempt from disclosure

under Florida Law, the Bidder shall clearly segregate and mark that information (for example, stamp each page "Confidential" and place it in an envelope marked "Confidential") and briefly describe in writing the grounds and specific legal citations for claiming exemption from the public records law. If after the notice of intended decision or 30 days after bid opening, whichever is earlier, the Commission receives a public records request related to the solicitation, the Commission will provide copies of public records that are not exempt to the requester. The Commission will endeavor to provide notice to the Bidder of all public records requests received related to documents provided by the Bidder that were marked pursuant to this paragraph. In no event shall the Bidder hold the Commission or any of its employees or agents liable for disclosing, or otherwise failing to protect the confidentiality of, information submitted in response to this solicitation.

FLORIDA EMERGENCY SUPPLIER NETWORK

Suppliers of products and services needed by government during hurricanes and other emergencies are invited to join a Florida Emergency Supplier Network. Suppliers will identify emergency products and services available, emergency contact information, plans to maintain their operations and supply chain in emergency circumstances, and pricing arrangements.

This information will be organized and furnished to buyers at State and County Emergency Operations Centers, and suppliers will be recognized with a certificate identifying their business as a member of the Florida Emergency Supplier Network. Please go to the following website to obtain a FESN application and contract:

http://www.dms.myflorida.com/business_operations/state_purchasing/florida_emergency_network/florida_emergency_supplier_network_fesn

POSTING OF BID TABS

Bid Tabulations with Contractors identified as awarded bidders will be posted electronically as Agency Decisions on the Department of Management Services Vendor Bid System as a Public Notice. The Agency Decision may be viewed at the following site, and will remain posted for a period of 72 hours. Failure to file a protest within the time prescribed in Section 120.57(3)(b), Florida Statutes, shall constitute a waiver of proceedings under Chapter 120, Florida Statutes: http://vbs.dms.state.fl.us/vbs/main_menu.

Awarded Bidders are instructed not to proceed until a Purchase Order, Formal Written Contract, Lease, Notice to Proceed, or some other form of written notice is given to the Contractor by the Commission. A company or person who proceeds prior to receiving a Purchase Order, Formal Written Contract, Lease, Notice to Proceed, or some other form of written notice from the Commission does so without a contract and at their own risk.

Sealed bids, proposals, or replies received by an agency pursuant to a competitive solicitation are exempt from s. [119.07](#)(1) and s. 24(a), Art. I of the State Constitution until such time as the agency provides notice of an intended decision or until 30 days after opening the bids, proposals, or final replies, whichever is earlier.

REFERENCES
FWC 13/14-89

A minimum of three (3) references from persons or firms for whom the bidder has performed similar jobs as per the specifications in this bid must be supplied with the bid. The firms and/or contact persons should be available between the hours of 8:00 AM and 5:00 PM, Eastern Time, Monday through Friday. If any reference is not available as stated above, this may be cause for rejection of the Bidder's bid. Provide a description (scope of work) of each job.

NAME OF COMPANY: _____

CONTACT PERSON: _____

ADDRESS: _____

CITY/STATE/Z1P: _____

TELEPHONE NUMBER: _____ E-MAIL ADDRESS: _____

JOB DATE: _____

DESCRIPTION (SCOPE OF WORK): _____

NAME OF COMPANY: _____

CONTACT PERSON: _____

ADDRESS: _____

CITY/STATE/Z1P: _____

TELEPHONE NUMBER: _____ E-MAIL ADDRESS: _____

JOB DATE: _____

DESCRIPTION (SCOPE OF WORK): _____

NAME OF COMPANY: _____

CONTACT PERSON: _____

ADDRESS: _____

CITY/STATE/Z1P: _____

TELEPHONE NUMBER: _____ E-MAIL ADDRESS: _____

JOB DATE: _____

DESCRIPTION (SCOPE OF WORK): _____

CONTRACTOR NAME

December 5, 2013

AUTHORIZED SIGNATURE

13/14-89
Scope of Work

Overview:

Dinner Island Ranch Wildlife Management Area consists of 21,714 acres of seasonally wet pine flatwoods, freshwater/depression marshes, improved pasture, dome swamps, prairie hammocks, swale, and dry prairie. It is located 25 miles northeast of Immokalee in Hendry County. Dinner Island Ranch's cow/calf operation is currently divided into two separate pasture leases. The West Side consists of 8,393 total acres currently available for lease in accordance with this bid. The lease area shall be grazed on a rotational schedule with a stocking rate of 1,573 AUs (1 AUs per 5.34 acres). The following Prescribed Grazing Plan was developed by Natural Resources Conservation Service (NRCS) and serves as the scope of work.

Prescribed Grazing Plan

Prepared for

Florida Fish and Wildlife Conservation Commission
December 2013

Dinner Island Ranch WMA

In

Hendry County, Florida

George Poole Grazing Lands Specialist

Dan Rutledge District Conservationist

Hendry Soil & Water Conservation District

And

United States Department of Agriculture

Natural Resources Conservation Service

Table of Contents:

1. Definition
2. Purpose
3. General Description
4. Objectives
5. Livestock Forage Inventory
6. Livestock Forage Balance
7. Livestock Forage Inventory Map
8. Annual Grazing Schedule
9. Plan Map
10. Suggested Herd Layout Map
11. Recommended Grazing Heights
12. Recommendations For Grazing Buffer Areas
13. Operations and Maintenance
14. Contingency Management Plan

1. Definition:

Prescribed grazing is a controlled harvest of vegetation with grazing and browsing animals, managed with the intent to achieve a specified objective.

For this plan, Prescribed Grazing will be used as a tool to assist in the management of wildlife habitat in conjunction with other practices needed to restore wildlife habitat, natural hydrology, and native plant communities. The grazing plan will be adjusted as needed to address resource concerns.

2. Purpose:

This practice will be applied as part of a conservation management system to accomplish the following objectives:

- Restore/enhance wildlife habitat on wetland and upland sites.
- Maintain a stable and desired plant community, improve or maintain the health and vigor of selected plants.
- Maintain or improve water quality.

Note: This plan will be reviewed yearly by the owner/operator. If the number of livestock (10% or more) or the forage condition changes the plan may need to be revised.

3. General Description:

The project area is located off County Road 833 in southern Hendry County, Florida. The property is currently managed as a cow/calf operation. The principal forage species in the pastures is Bahia grass (*Paspalum notatum*), which have been planted for improved pasture. Other plant communities include South Florida Flatwoods, Freshwater Marsh, Wet Prairie and Hardwood Hammock. The enclosed Forage Inventory table and Forage Inventory map describe the location and forage production of the different plant communities.

The project area encompasses approximately **8,393 acres**. The pastures in their current condition are capable of producing enough forage to support **1,573 animal units (AUs)**. The system in its present condition can support an average of **1,466 cows**, with an average weight of 1000 lbs., and **78 bulls**, with an average weight of 1350 lbs with a suggested 20:1 Cow/Bull ratio.

One animal unit (AU) is one mature cow of approximately 1,000 pounds and a calf up to weaning, usually six (6) months of age, or their equivalent. To estimate animal units for Heifers and Bulls use the following AU values.

Table 1: Animal Unit Equivalent Guide

Species	Average Weight (pounds)	Animal Unit Equivalent (AUE)	---- Forage Consumed (pounds) ----		
			day	month	year
Cow, dry	950	0.92	24	727	8,730
Cow with calf	1,000	1.00	26	790	9,490
Bull, mature	1,500	1.35	35	1,067	12,811
Cattle, 1 year old	600	0.60	15.6	474	5,694
Cattle, 2 year old	800	0.80	20.8	632	7,592
Deer, white-tailed, mature	150	0.15	3.9	118	1,423

4. Objectives:

The Florida Fish and Wildlife Conservation Commission's objectives are to restore the natural ecological communities on wetland and upland sites. The objectives of the prescribed grazing plan are to improve and/or maintain an optimum level of the native forages and assist in the reduction of biomass. The proposed grazing plan considers animal health (domestic and wild) by using a stocking rate that will provide the needed forage and browse for the animals while protecting the natural resources of the site. The recommended stocking rate is based on a comprehensive forage inventory conducted on the ranch in November 2013. The proposed plan also considers minerals and other supplements needed by the animals. The type and suggested season for providing the needed supplements are shown on the grazing schedule. The profitability of the site as a Cow Calf operation was not taken into account in this plan and will be up to the cattle leasee and the FFWCC to determine.

5. Livestock Forage Inventory:

Livestock Forage Inventories are estimates of available forage in each pasture and ecological community. These estimates are then used to project stocking rates and feed requirements annually. The following livestock forage inventory was created prior to the development of this plan.

The forage inventory did not identify indicators of poor grazing management, such as overgrazing or large denuded areas. The measurements and observations taken at the time of the inventory indicated that the property is and has been stocked at or below the carrying capacity for the season and climatic conditions. However, some pastures have moderate to high infestations of smut grass and other undesirable plant species.

The livestock forage inventory was based on management and weather conditions that existed in 2013. Annual forage production will vary due to climatic conditions and management of the grazing system. The forage inventory should be evaluated on an annual or semi-annual basis to ensure proper stocking rate according to the goals listed for the site and to meet the forage requirements of the livestock.

6. Livestock Forage Balance

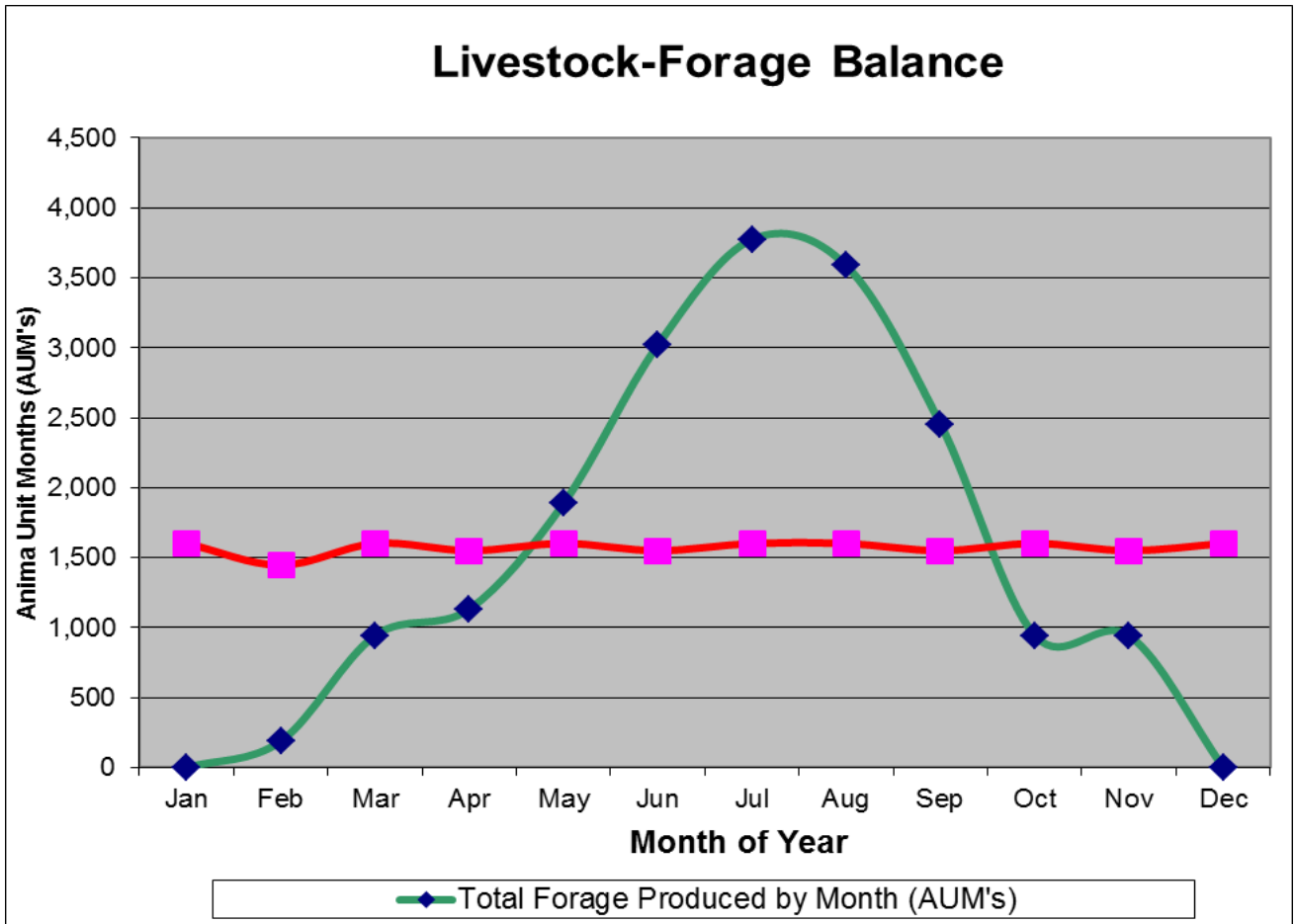


Figure 6 illustrates the relationship of forage growth and animal demand for the project area. The “*Forage Produced*” in Figure 6 represents the amount of forage grown in each month. It is important to note that forage growth is not sufficient to meet grazing demand from October through May. However, if the area is properly stocked and managed there will be enough standing forage to support the grazing animals without jeopardizing environmental quality or livestock production.

The Prescribed Grazing Plan contains 10 items which should be implemented annually in order to achieve the desired results.

1. **Rotational Grazing** should be applied to maintain and improve the health and vigor of the plant community.
2. **Proper Grazing Use** will be applied to all grazed areas to regulate the amount of herbage removed by grazing animals. During the growing season, the degree of use of native vegetation will be limited to 50% (by weight) of the current year's growth.
3. **Grazing heights** will be used to guide grazing management decisions (see section 11).
4. **Nesting Period** – The rotational grazing system should be managed to provide an undisturbed nesting period for ground nesting species during the nesting season. Livestock should be removed from at least 1/3 of the grazing unit every year for a period 4 to 6 weeks in length during the period between February 1 and June 30.
5. **Deferment periods** should be provided following all mechanical and/or chemical brush management activities. This will allow desirable plants to recover from the stress or damage caused by the treatment. The length of the deferment periods will be at least 90 consecutive days during the period of June 1 through October 1.
6. **Supplemental feed** will be provided to livestock during periods when forage quality and quantity is low.
7. **Weed prevention and control** - All planting material and other supplemental feed will be free of noxious or invasive weed seed. An aggressive pest management plan has already been implemented to combat encroachment of invasive-exotic species.
8. **Feeding Area Management** - Supplemental feed provided to domestic livestock will be fed on upland areas at least 100 feet away from wetlands, streams, ditches, and ponds. Supplement feeders will be well dispersed across the landscape. Supplemental feeding locations will be moved at least once every 30 days.
9. **Portable feeders** will be used to provide protein, mineral, and other supplements to livestock. These feeders will be moved as needed to improve livestock distribution and prevent undesirable effects on the landscape.
10. **Plan Review** – Annual reviews should be scheduled with the local Natural Resources Conservation Service (NRCS) office to ensure the plan meets the goals and objectives of the property and those of the livestock owner.

Plant Communities Descriptions

Pasture – Main forage is Bahia grass. Most pastures are good condition. Some Bahia pastures contain Smut grass, and other weedy undesirable species. Plant composition shows an average of 60-80 % Bahia and 20-40 % Smut grass/undesirable. Suggested stocking rate is **2.8-3.2 AUM/Acre (3.8-4.2 Ac/AU)**.

Freshwater Marsh/Wet Prairie – Wet areas with mainly wetland plants. Flooded for most of the wet season and are considered very important habitat for many wildlife species. Most of the wetlands on the ranch are in fair to good condition. Plant composition includes, Maidencane, Torpedo grass, Carolina willow, Saw grass, Pickerel weed, juncus, sedges, and others. Suggested stocking rate is **10-12 Ac. /AU**.

Hardwood Hammock - This community is present throughout the ranch. This community mainly consists of Live Oak, Laurel Oak and Cabbage Palm trees. This community has a low Potential for producing forage due to the dense canopy cover of hardwoods and associated palms. These will provide protection from cold weather and shade during hot summer months. There will be little forage available when the canopy cover exceeds 60 percent. Suggested stocking rate is **50 Ac/AU**.

South Florida Flatwoods - This community is present in the northwestern part of the ranch. This community mainly consists of Slash pine, Saw palmetto, Cabbage palm in the overstory. The understory consisted of Saw palmetto, Wax myrtle, native grasses and Bahia grass. Suggested stocking rate is **19 Ac/AU**.

Cooperator: FWC-Dinner Island Ranch WMA

Technician: Poole

Date: Nov-13

Field Name or Number and Kind of Forage	RANGELAND				PASTURE AND CROPLAND				AVAILABLE FORAGE	
	Ecological Community or Range Site	Condition Class (E, G, F, P)	Acres (Ac.)	Suggested Stocking Rate (Acre/AU)	Growing Period (months)	Fertility Level (lbs.N) (Ac.)	Acres	Suggested Stocking Rate (AUM/Ac.)	Animal Unit Month (AUM)	Animal Unit Year (AU)
2-Bahia					Mar.-Oct.		218.3	3.1	676.7	56.4
2-S. F. Flatwoods	SFF	G	5.2	19					3.3	0.3
2-Freshwater Marsh	FWM	F-G	42.1	10					50.5	4.2
2-Wet Prairie	WP	F-G	66.3	12					66.3	5.5
3-Bahia					Mar.-Oct.		546.3	3.1	1693.5	141.1
3-Hardwood Hammoc	HH	G	62	50					14.9	1.2
3-Freshwater Marsh	FWM	G	258.1	10					309.7	25.8
3-Wet Prairie	WP	G	185.1	12					185.1	15.4
4- Bahia					Mar.-Oct.		621.3	3.3	2050.3	170.9
4-Hardwood Hammoc	HH	G	35.3	50					8.5	0.7
4-Freshwater Marsh	FWM	F-G	172.6	10					207.1	17.3
5-Bahia					Mar.-Oct.		325.1	3.0	975.3	81.3
5-Hardwood Hammoc	HH	G	58.2	50					14.0	1.2
5-Freshwater Marsh	FWM	F-G	144.1	10					172.9	14.4
6- Bahia					Mar.-Oct.		630.8	3.0	1892.4	157.7
6-Hardwood Hammoc	HH	G	81.6	50					19.6	1.6
6-Freshwater Marsh	FWM	F-G	164.7	10					197.6	16.5
TOTAL			1275				2342		8537.8	711.5

Forage production will vary between years depending on precipitation and temperatures.

Notes:

Cooperator: FWC-Dinner Island Ranch WMA

Technician: Poole

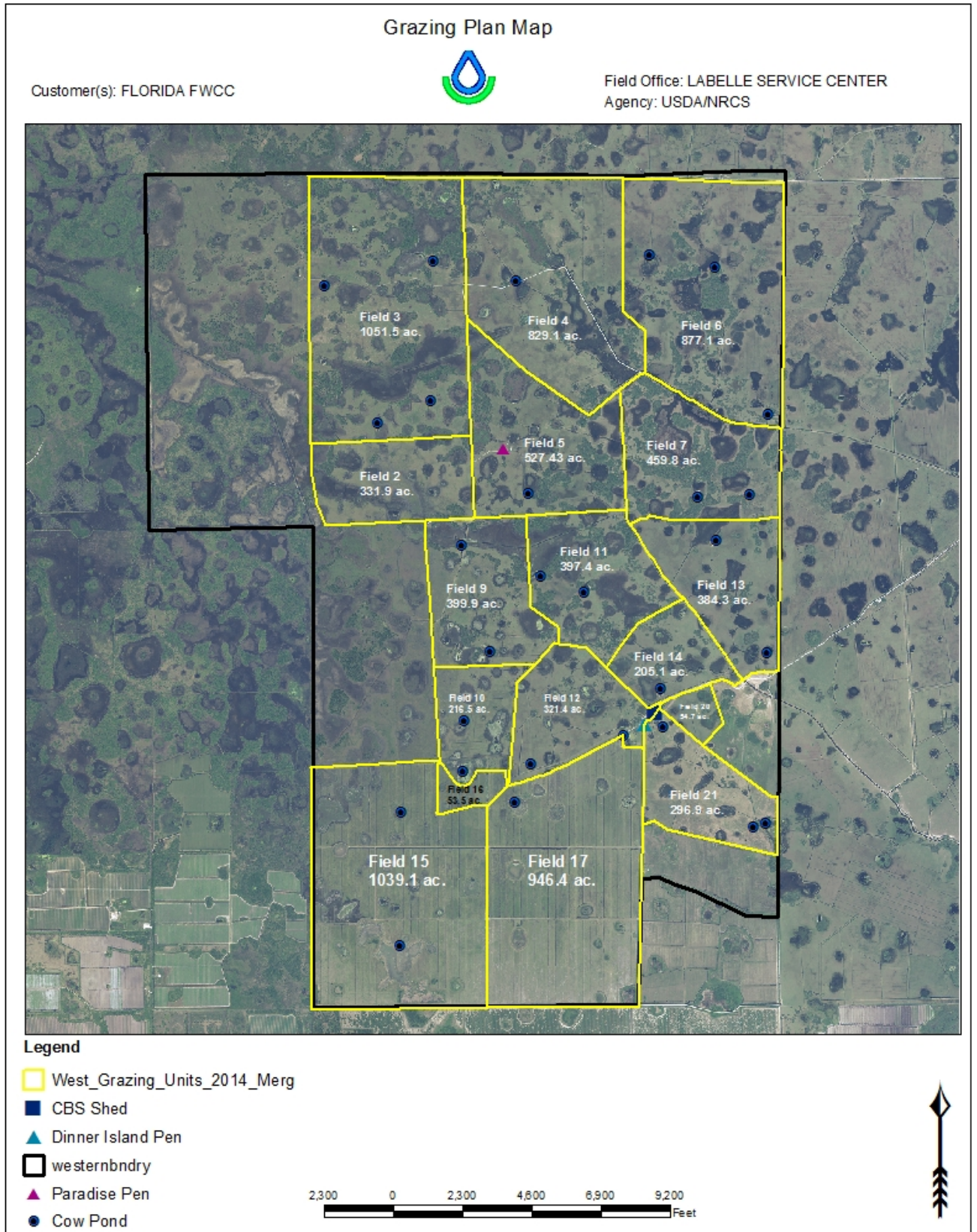
Date: Nov-13

Field Name or Number and Kind of Forage	RANGELAND				PASTURE AND CROPLAND				AVAILABLE FORAGE	
	Ecological Community or Range Site	Condition Class (E, G, F, P)	Acres (Ac.)	Suggested Stocking Rate (Acre/AU)	Growing Period (months)	Fertility Level (lbs.N) (Ac.)	Acres	Suggested Stocking Rate (AUM/Ac.)	Animal Unit Month (AUM)	Animal Unit Year (AU)
7-Bahia					Mar.-Oct.		205.9	3.0	617.7	51.5
7-Hardwood Hammoc	HH	G	122.2	50					29.3	2.4
7-Freshwater Marsh	FWM	F-G	131.7	10					158.0	13.2
9-Bahia					Mar.-Oct.		255.1	3.0	765.3	63.8
9-Hardwood Hammoc	HH	G	45.2	50					10.8	0.9
9-Freshwater Marsh	FWM	F-G	99.6	10					119.5	10.0
10-Bahia					Mar.-Oct.		180.1	3.1	558.3	46.5
10-Freshwater Marsh	FWM	G	36.4	10					43.7	3.6
11-Bahia					Mar.-Oct.		201.7	3.0	605.1	50.4
11-Freshwater Marsh	FWM	G	80.2	10					96.2	8.0
11-Hardwood Hammo	HH	F-G	73.7	50					17.7	1.5
11-Wet Prairie	WP	F-G	41.8	12					41.8	3.5
12-Bahia					Mar.-Oct.		279.8	3.0	839.4	70.0
12-Hardwood Hammo	HH	G	3.5	50					0.8	0.1
12-Freshwater Marsh	FWM	G	38.1	10					45.7	3.8
13-Bahia					Mar.-Oct.		318.4	3.0	955.2	79.6
13-Freshwater Marsh	FWM	F-G	47.6	10					57.1	4.8
13-Hardwood Hammo	HH	G	18.3	50					4.4	0.4
14-Bahia					Mar.-Oct.		151.9	2.8	425.3	35.4
14-Freshwater Marsh	FWM	G	41.2	10					49.4	4.1
14-Hardwood Hammo	HH	G	12	50					2.9	0.2
15-Semi-Imp. Pasture					Mar.-Oct.		905.6	2.0	1811.2	150.9
15-Freshwater Marsh	FWM	F-G	36.8	10					44.2	3.7
15-Wet Prairie	WP	F-G	96.7	12					96.7	8.1
TOTAL			828				2499		7395.9	616.3

Forage production will vary between years depending on precipitation and temperatures.

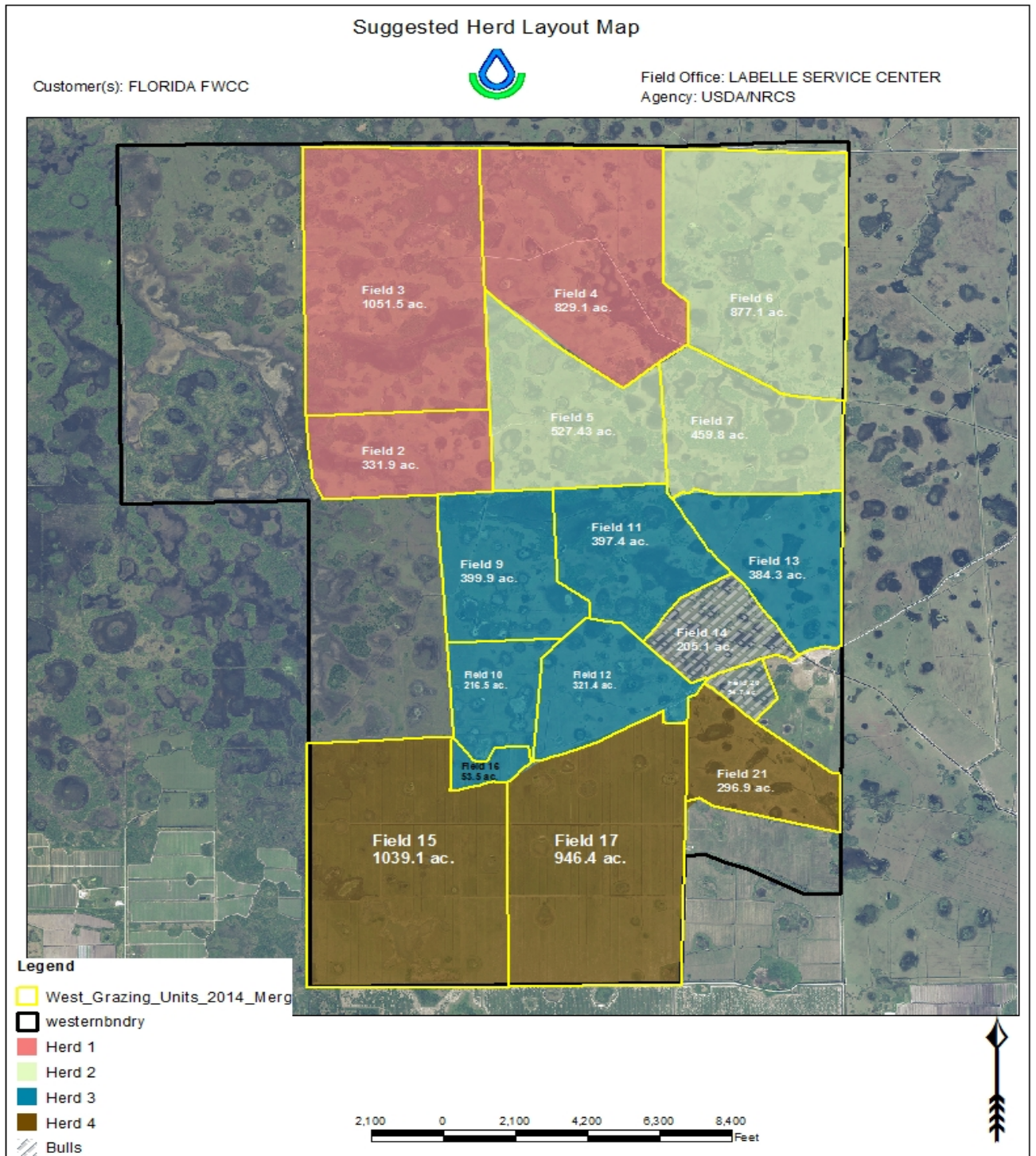
Notes:

9. Plan Map



10. Suggested Herd Layout Map

This map is ONLY a SUGGESTION of a possible herd layout. The ranch has many gates and enough lanes that will allow many other herd sizes and combinations. The forage inventory table will help you determine other herd combinations and herd size as needed.



11. Recommended Grazing Heights and Length of Grazing Periods:

Grazing animals can rapidly and substantially alter the productivity and amount of forage in each pasture because of grazing preferences and animal distribution. Overgrazing adversely affects wildlife habitat, plant growth, water, soil conservation, and plant persistence. Animals prefer improved pasture forages like the one listed below and avoid plants that are coarse and hard to digest. During the late spring, summer and early fall cattle tend graze upland areas and avoid grazing in wetlands such as sloughs and marshes if adequate forage is available. However, limited availability of forage plants on upland areas may induce more grazing of the wetland plants in some seasons, and could result in overgrazing. Under-grazing results in forage waste, reduced quality, and reduced tiller development. Therefore, the number of animals on a specific area must be balanced with available forage to achieve the goals and objectives for this site. This will require monitoring of the forage availability on a regular basis and adjusting the stock density as needed to maintain a unique balance of desirable forage and important wetland vegetation.

The following table lists common forages found in South Florida along with recommended heights to maintain healthy stands of forage:

FORAGE TYPE	Min. Ht. To Begin Grazing	Min. Grazing Ht.
Bahia grass	6"	2"
Limpo grass	12"	4"
Pangola Digitgrass	8"	6"
Maidencane (FWM)	12"	6-8"
Chalky bluestem (Rangeland)	12"	6-8"

Grazing heights for native forage plants is dependent upon the species and the time of year the plant is grazed. For Native Grasses, ***remove no more than 50% (by weight) of the plant in any grazing event*** This will provide proper use of the forage while maintaining sufficient plant material to, provide wildlife habitat, protect the soil resource, and maintain the health of the plant community.

Grazing periods should be kept relatively short to prevent the plants from being grazed before they have the opportunity to recover from the last grazing event. This will depend on the size of the herd and the area to be grazed. Use the forage heights shown in the previous table to determine the length of the grazing periods.

Rest Periods should be provided between grazing events to all the plants to recovery from the effects of grazing. The recovery periods should be long enough to allow the forages to reach the *Minimum Height to Begin Grazing*. Because the rest periods are based on the growth rate of the plants the length of the rest period will vary. The recommended recovery periods are shown in the following table:

	Resting Periods Based on Forage Growth Rate
--	--

Forage Type	Forage Growth Rate		
	<i>Fast</i> (June 1-Sept 1)	Moderate (Mar 1-June 1 Sept 1 – Nov 1)	<i>Dormant</i> (Nov 1- Mar 1)
Bahiagrass	14-28 days	28-35 days	35-60 days or more
Limpograss	14-21 days	28-35 days	35-60 days or more
Pangolagrass	7-21 days	21-28 days	28-60 days or more
Maidencane	28-35 days	35-45 days	45-60 days or more
Chalky bluestem	28-35 days	35-45 days	45-60 days or more

12. Adjustments to the Grazing System:

Adjustments in the grazing management system will be necessary during and after management activities, such as planting, prescribed burning or pest management. The adjustments will provide a suitable period for the vegetation to recover from the management activity or as dictated by pesticide label restrictions. A deferment from grazing means the complete removal of **all** domestic animals for the duration of the deferment.

If buffer areas are developed around specific wetlands or other areas within the Ranch during the restoration process, livestock grazing may be permitted during dry periods of the year. This will help to utilize available forages within the buffer and control woody vegetation. Stocking rates should be adjusted to assure that grazing is complete within one week. The minimum grazing heights listed in Section 11 for corresponding grasses shall not be exceeded.

When prescribed burning is applied, grazing shall be deferred as follows:

Improved pasture areas	30-60 days during the growing season (Mar1-Oct1)
Flatwoods	30-90 days during the growing season (Mar1-Oct1)
Fresh Water Marsh and Slough	30-90 days during the growing season (Mar1-Oct1)

Areas that have been disturbed and planted to native vegetation shall be deferred from grazing for a minimum of 1 complete growing season following planting or until the grass is well established and produces seed. Native grass plantings generally require 2 complete growing seasons to become well established. The deferment shall continue until a NRCS Rangeland or Grazing Land Specialist has provided approval. Temporary fences may be used to protect small areas during the deferment period.

Areas that have been mechanically treated and/or planted, will be provided a deferment period to allow herbaceous plants to recover. The deferment will be a minimum of 90 consecutive days during the period of March 1 to December 1, unless only spot control was applied.

If herbicides used to control common weeds and invasive species the grazing management will be adjusted to meet the requirements (if any) listed on the herbicide label. Cattle will not be allowed to re-enter the area for the duration shown on the herbicide label.

13. Operation and Maintenance:

The location of mineral and supplement feeders will be moved routinely to evenly distribute grazing animals throughout the pasture. The herd will be rotated to a fresh pasture when the average stubble height falls below the recommended minimum grazing height (See Section 11). When possible, the grazing period should be 14 days or less and the pastures allowed a recovery period of 21 days or until the forage reaches the recommended height to begin grazing (See Section 11).

14. Contingency Management Plan:

Forage supplies will be evaluated weekly to determine if forage supplies and quality are adequate to meet livestock demand. When the forage is not adequate, the grazing system will be adjusted or supplemental feed will be supplied.

When prolonged periods of adverse climatic condition effect the supply of forage, the grazing system and/or stocking rates will be adjusted or additional supplemental feed will be provided.

