

SITE PLAN LPG TANK AND ELEVATED PLATFORM GROUNDING DETAIL

NOTES

GENERAL

1. NEW PERIMETER GROUND SHALL BE 2/0 AWG TINNED STRANDED COPPER WIRE.
2. NEW GROUND RODS SHALL BE 1' X 5/8" (MIN) STAINLESS STEEL

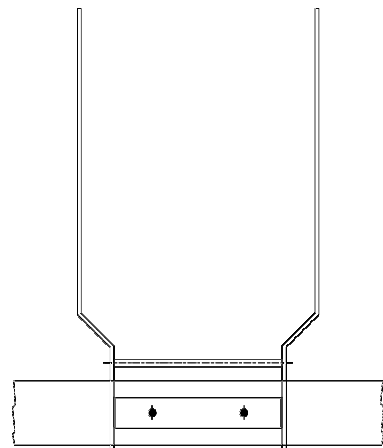
NEW PERIMETER GROUND

1. NEW PERIMETER GROUND SHALL BE EXOTHERMICALLY BONDED TO THE EXISTING SITE SINGLE POINT GROUND.
2. NEW PERIMETER GROUND SHALL BE MECHANICALLY BONED TO THE NEW LPG TANK PLATFORM LADDER BASE WITH TWO-HOLE COMPRESSION LUG AND UTILIZING THE EXISTING STAINLESS STEEL "WEDGE ALL ANCHOR" HARDWARE.

NEW GROUND RODS

1. NEW 1' X 5/8" (MIN) GROUND RODS SHALL BE EXOTHERMICALLY BONDED TO THE NEW PERIMETER GROUND.
2. NEW GROUND RODS SHALL BE INSTALLED AS CLOSE TO THE EXISTING SITE SINGLE POINT GROUND AND NEW LPG TANK PLATFORM LADDER FOUNDATION AS PRACTICAL.
3. NEW GROUND RODS SHALL BE SPACED 20' APART (MAX) ALONG THE ENTIRE RUN OF THE NEW PERIMETER GROUND.

DRAWING TITLE DETAILS	DRAWING NO. TT-12 OF 17	REV. 0	JOB NUMBER 17-156	JOB TITLE SITE REPAIR OF STORM DAMAGE TEA TABLE SITE FOR FDOT	<p style="font-size: 8px; margin: 0;"> Pate Engineering Inc. 13540 N. FLORIDA AVE. SUITE 203 TAMPA, FLORIDA 33613 813-960-0002 FL CERTIFICATE OF AUTHORIZATION #4524 </p>	DESIGNED BY RR	DRAWN BY MH	CHECKED BY RR	APPROVED BY 0	REV.	DESCRIPTION	DATE
						A	FOR APPROVAL	7/31/18	REV.	DESCRIPTION	DATE	
						B	FOR APPROVAL	1/25/19				
						C	FOR APPROVAL	3/27/19				
						0	FOR CONSTRUCTION	4/2/19				

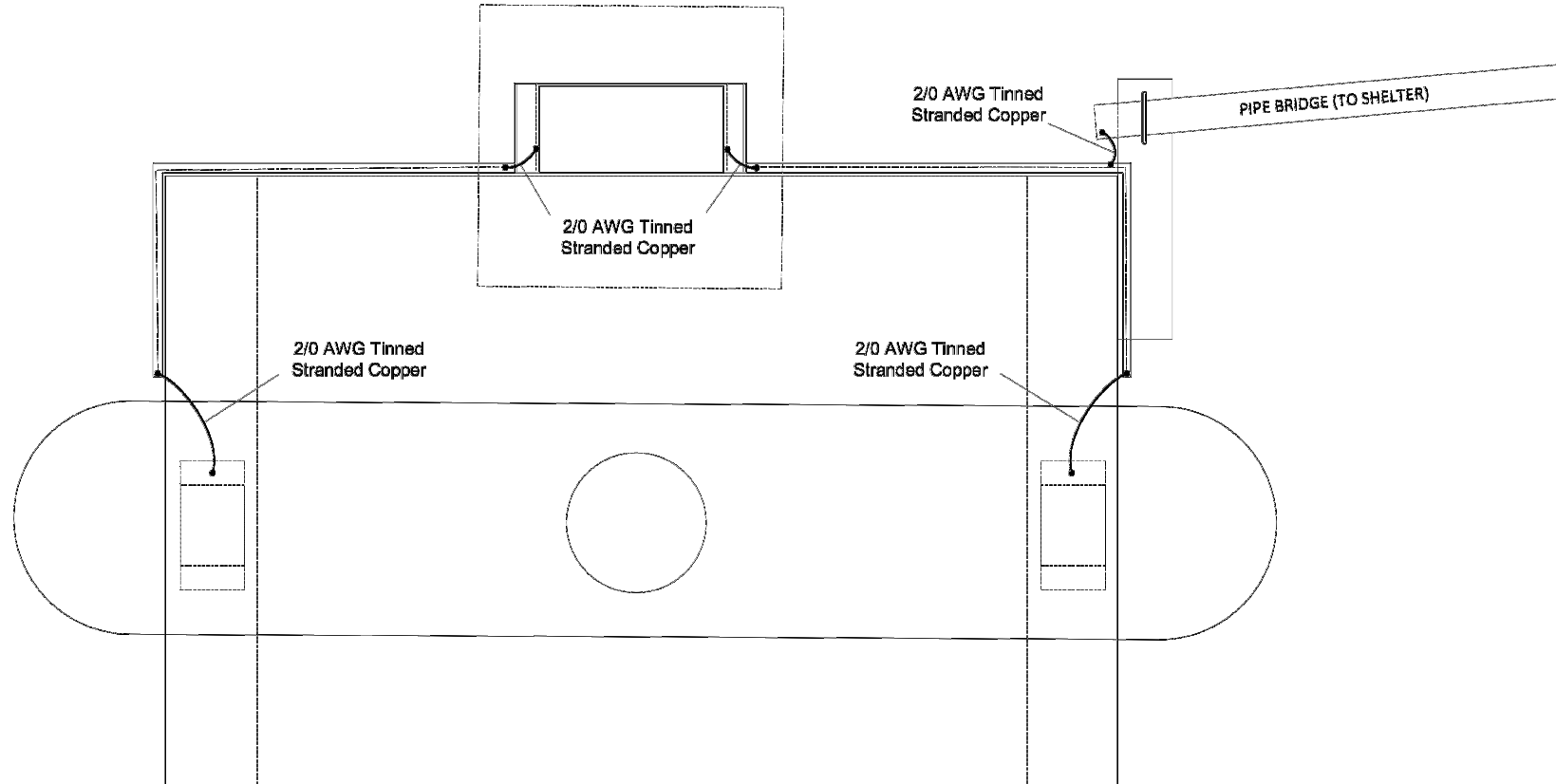


Mechanically connect 2/0 AWG perimeter ground wire to Ladder Base

(NEW)
2/0 AWG
Tinned Stranded
Copper Wire

36.00" MIN

**ELEVATED LPG TANK PLATFORM
LADDER GROUNDING DETAIL**



**ELEVATED LPG TANK PLATFORM
RAILING AND TANK
GROUNDING DETAIL**

NOTES

GENERAL

1. ALL GROUND BONDS SHALL BE MECHANICAL IN NATURE.
2. LPG FUEL LINE AND REGULATOR(S) SHALL BE SECURED AND PLACED TO AVOID TRIP HAZARD OR BEING CRUSHED BY FOOT TRAFFIC.

LADDER

1. LADDER BASE SHALL BE BONDED TO THE NEW 2/0 AWG TINNED STRANDED COPPER GROUND WIRE WITH TWO-HOLE COMPRESSION LUG UTILIZING THE EXISTING STAINLESS STEEL "WEDGE ALL ANCHOR" HARDWARE.

PLATFORM SAFETY RAILING

1. SAFETY RAILING POST ATTACHMENT PLATES SHALL BE BONDED TO THE LADDER CONNECTION TO SLAB BENT PLATE ON EACH SIDE WITH 2/0 AWG TINNED STRANDED COPPER WIRE AND TWO-HOLE COMPRESSION LUGS UTILIZING THE EXISTING STAINLESS STEEL "WEDGE ALL ANCHOR" HARDWARE.
2. SAFETY RAILING POST ATTACHMENT PLATE SHALL BE BONDED TO THE 4" PIPE BRIDGE WITH 2/0 AWG TINNED STRANDED COPPER WIRE AND TWO-HOLE COMPRESSION LUGS UTILIZING STAINLESS STEEL HARDWARE.
3. PLATFORM SAFETY RAILINGS SHALL ALSO BE BONDED TO THE LPG TANK SUPPORT FEET ON EACH SIDE WITH 2/0 AWG TINNED STRANDED COPPER PERIMETER GROUND WIRE AND TWO-HOLE COMPRESSION LUGS UTILIZING STAINLESS STEEL "WEDGE ALL ANCHOR" HARDWARE.

DRAWING TITLE DETAILS	DRAWING NO. TT-13	OF 17	REV. 0	JOB NUMBER 17-156	JOB TITLE SITE REPAIR OF STORM DAMAGE TEA TABLE SITE FOR FDOT	 Pate Engineering Inc. 13540 N. FLORIDA AVE. SUITE 203 TAMPA, FLORIDA 33613 813-960-0002 FL CERTIFICATE OF AUTHORIZATION #4524	DESIGNED BY RR	DRAWING RECORD					
							DRAWN BY MH	DESCRIPTION FOR APPROVAL	DATE 7/31/18	REV.	DESCRIPTION	DATE	
							CHECKED BY RR	B	FOR APPROVAL	1/25/19			
							APPROVED BY	C	FOR APPROVAL	3/27/19			
								0	FOR CONSTRUCTION	4/2/19			