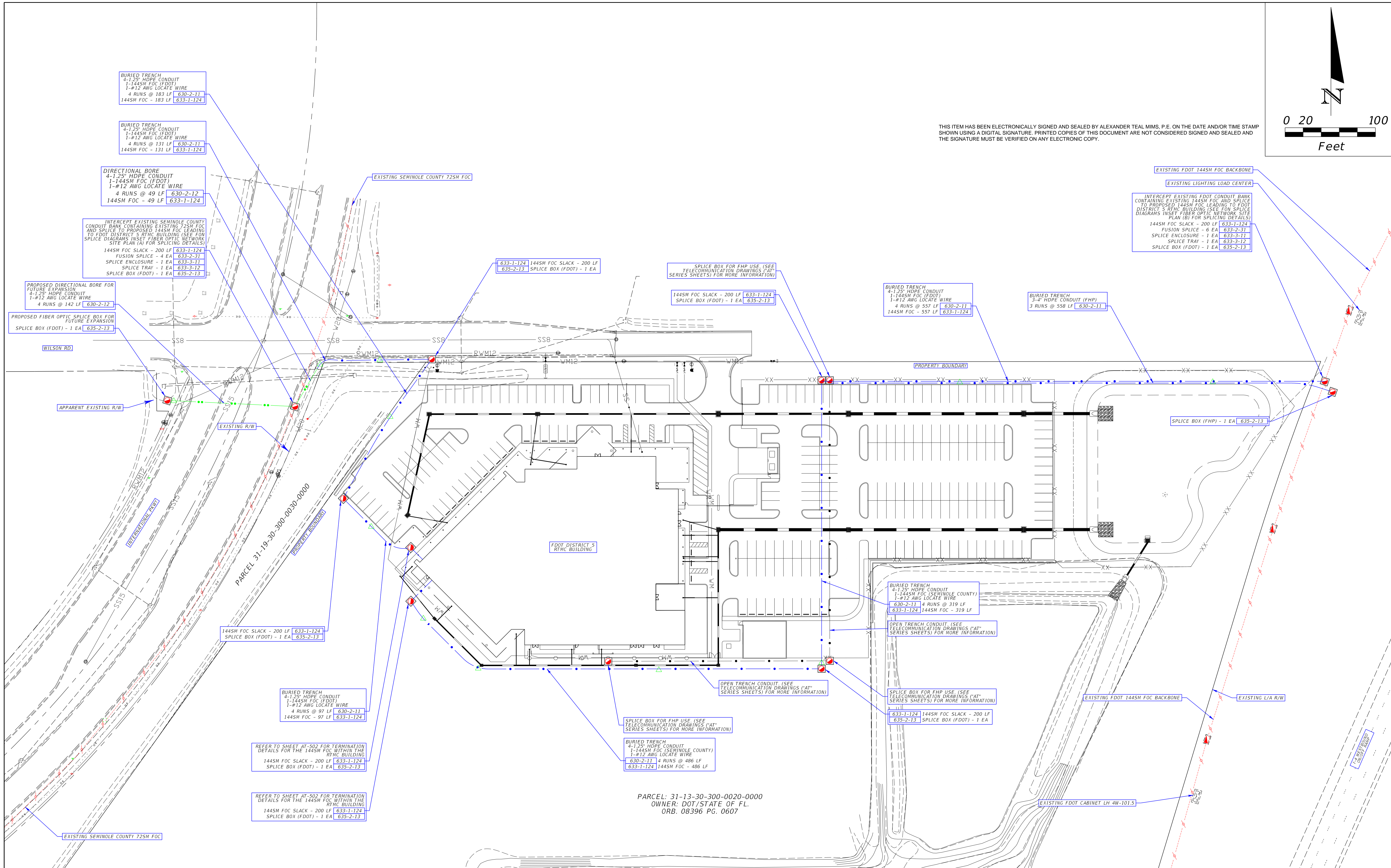


THIS ITEM HAS BEEN ELECTRONICALLY SIGNED AND SEALED BY ALEXANDER TEAL MIMS, P.E. ON THE DATE AND/OR TIME STAMP SHOWN USING A DIGITAL SIGNATURE. PRINTED COPIES OF THIS DOCUMENT ARE NOT CONSIDERED SIGNED AND SEALED AND THE SIGNATURE MUST BE VERIFIED ON ANY ELECTRONIC COPY.



NOTICE: THE OFFICIAL RECORD OF THIS SHEET IS THE ELECTRONIC FILE DIGITALLY SIGNED AND SEALED UNDER RULE 61G15-23.004 F.A.C. EXEMPT, CRITICAL FACILITY

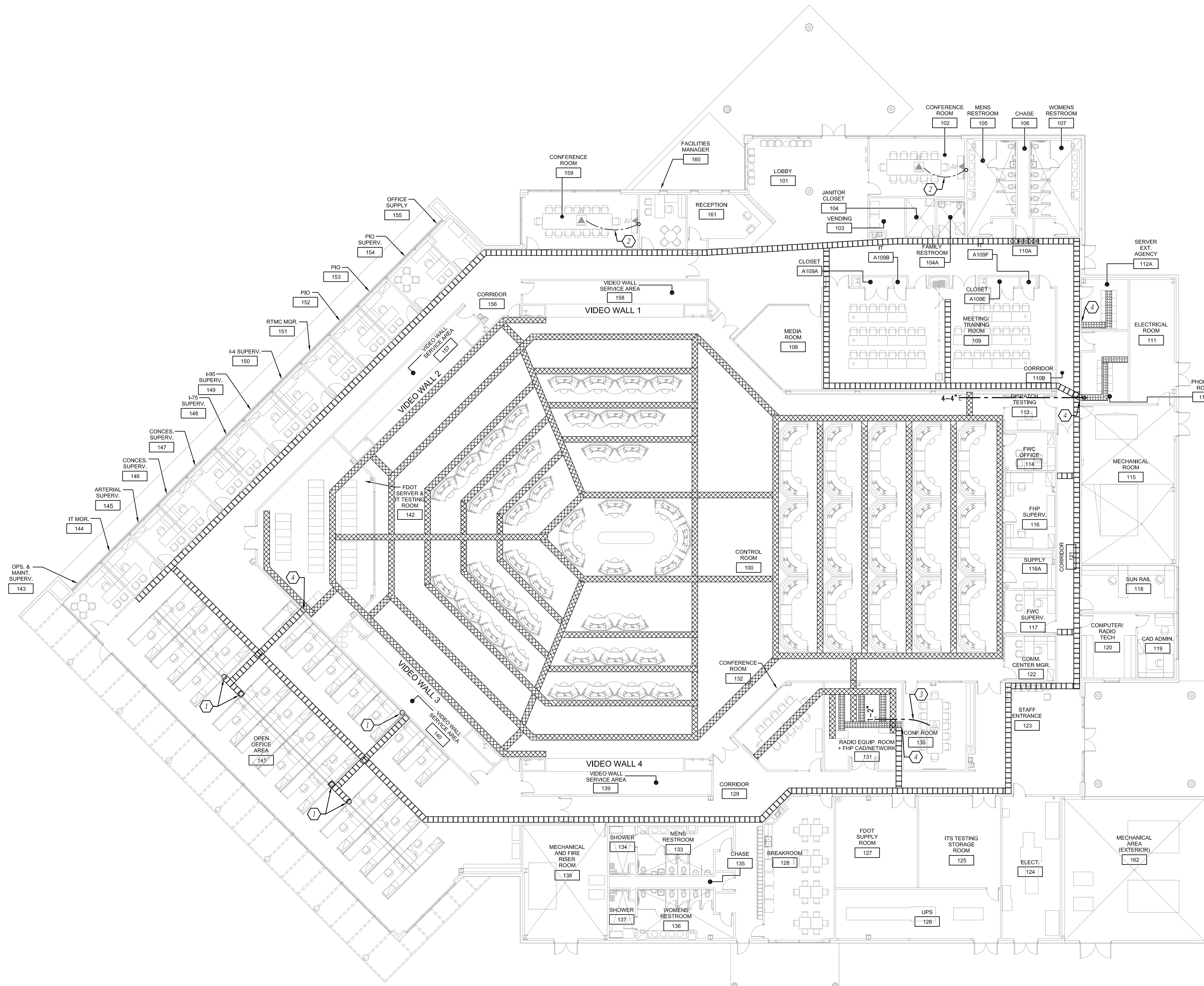
REVISIONS						TRAFFIC ENGINEERING DATA SOLUTIONS, INC.			STATE OF FLORIDA DEPARTMENT OF TRANSPORTATION			SHEET TITLE:		REF. DWG. NO.
DATE	BY	DESCRIPTION	DATE	BY	DESCRIPTION	80 SPRING VISTA DRIVE DEBARY, FL 32713 TEL: (386) 753-0558			ROAD NO. COUNTY FINANCIAL PROJECT ID			FIBER OPTIC NETWORK SITE PLAN		AN-101
						CERTIFICATE OF AUTHORIZATION NO. #27392 ALEX TEAL MIMS, P.E. NO. #77095			N / A SEMINOLE 437100-1-52-01 <td colspan="2">REGIONAL TRANSPORTATION MANAGEMENT CENTER</td> <td>SHEET NO.</td>			REGIONAL TRANSPORTATION MANAGEMENT CENTER		SHEET NO.
														245 OF 249

**KEY NOTES:**

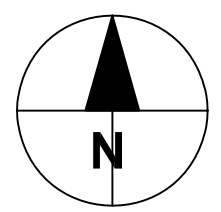
- 1 CONDUIT RISER FOR CAT6 CABLES. INSTALLED BY FURNITURE CONTRACTOR.
- 2 4" PVC CONDUIT FOR AVJ AND CAT6 DATA CABLES.
- 3 2" PVC CONDUIT FOR CAT6 DATA CABLES.
- 4 MOUNT VERTICAL CABLE TRAY TO WALL. SEE DETAIL 1 ON SHEET AT-507 FOR MORE INFORMATION.

**GENERAL NOTES:**

1. PROVIDE SUPPLEMENTAL STEEL SUPPORTS TO MOUNT THE CABLE TRAYS, SPACED IN ACCORDANCE WITH THE CABLE TRAY MANUFACTURER'S RECOMMENDATIONS AND DESIGNED TO SUPPORT A MINIMUM OF 300% OF THE MAXIMUM WEIGHT OF THE INSTALLED CABLES.
2. SUPPLEMENTAL STEEL SUPPORTS SHALL RAISE THE CABLE TRAY 1.5' UP OFF THE FLOOR LOCATIONS WHERE THE CABLE TRAYS ARE INSTALLED BENEATH THE RAISED FLOOR TO ALLOW THE ELECTRICAL RACEWAY TO RUN UNDERNEATH THE CABLE TRAY.
3. SUPPLEMENTAL STEEL SUPPORTS SHALL SUSPEND THE CABLE TRAYS ABOVE THE DROP CEILING, AVOIDING CONFLICTS WITH ANY OTHER EQUIPMENT INSTALLED ABOVE THE DROP CEILING BY ROUTING THE CABLE TRAY ABOVE, BELOW, OR AROUND THE CONFLICT. COORDINATE WITH OTHER DISCIPLINES FOR POTENTIAL AREAS OF CONFLICT.
4. INSTALL CABLES ON J-HOOKS TO NEAREST CABLE TRAY PER DETAILS 1 AND 3 ON SHEET AT-505.
5. REFER TO DETAILS 4 AND 5 ON SHEET AT-505 FOR INFORMATION REGARDING RACEWAY PATHS IN WHICH WALL PENETRATIONS ARE REQUIRED.



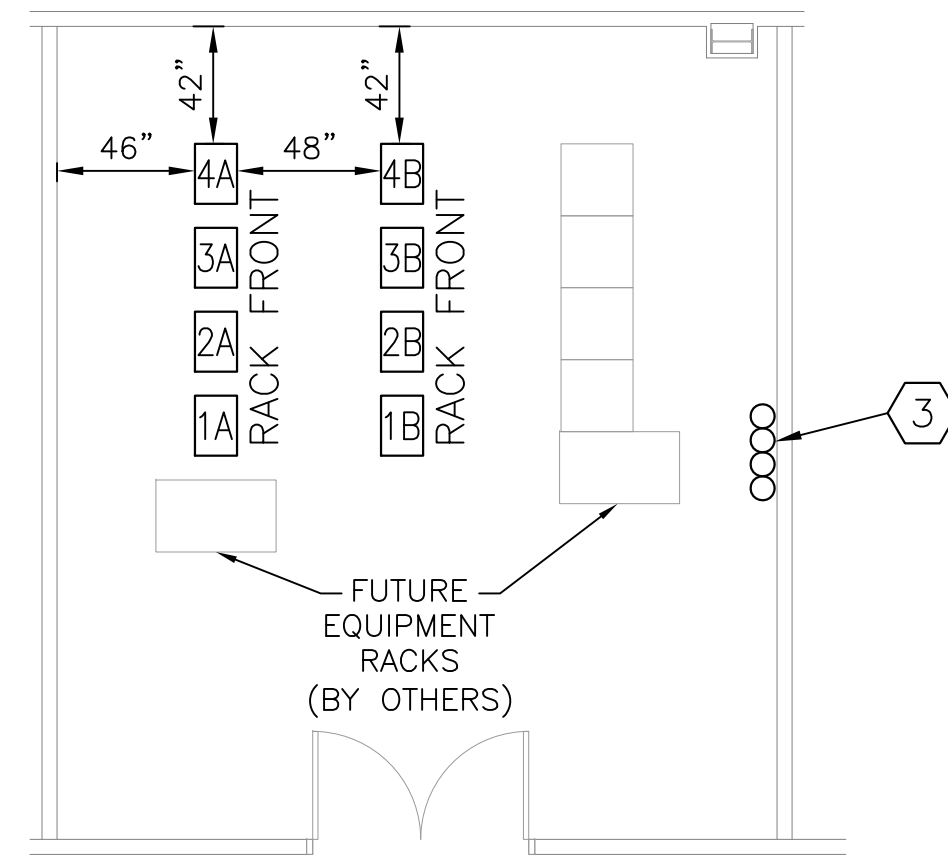
NOTICE: THE OFFICIAL RECORD OF THIS SHEET IS THE ELECTRONIC FILE DIGITALLY SIGNED AND SEALED UNDER RULE 61G15-23.004 F.A.C. EXEMPT, CRITICAL FACILITY



**1 TELECOMMUNICATIONS CABLE RACEWAY PLAN**

AT-111 REF: AA-201 SCALE: 1/16" = 1'-0"

REVISIONS						AECOM TECHNICAL SERVICES, INC 315 EAST ROBINSON STREET, SUITE 245 ORLANDO, FL 32801-1949 TEL: (407) 422-0353 CERTIFICATE OF AUTHORIZATION NO. 8115 ALEX MOUSADI, P.E. NO. 50764	DRAWN BY: EC CHECKED BY: MC DESIGNED BY: MC CHECKED BY: AM	STATE OF FLORIDA DEPARTMENT OF TRANSPORTATION			SHEET TITLE: <b>TELECOMMUNICATIONS CABLE RACEWAY PLAN</b>	REF. DWG. NO. AT-111
DATE	BY	DESCRIPTION	DATE	BY	DESCRIPTION			ROAD NO.	COUNTY	FINANCIAL PROJECT ID		
							N / A	SEMINOLE	437100-1-52-01			



PLAN VIEW

**1 RADIO EQUIP. ROOM + FHP CAD / NETWORK ROOM #131**  
SCALE 3/16" = 1'-0"

RACK ELEVATION		
RACK UNITS	EQUIPMENT RACK (2)X(5)	RACK UNITS
7	NAIX CPP ROOM #-1A-6 (SEE NOTE 7)	7
6		6
5	1 RU CABLE MANAGER	5
4	NAIX FPP ROOM #-1A-4 (SEE NOTE 6)	4
3	SPACE	3
2	SPACE	2
1	PDU 1A	1

NOTES:  
1. MUTOA'S LOCATED IN ROOM #'S 100, 121, AND 156.

**2 ITS NETWORK AGGREGATION POINTS (MUTOA'S)**  
SCALE NOT TO SCALE

RACK ELEVATIONS					
RACK UNITS	EQUIPMENT RACK (1)X(4)	EQUIPMENT RACK (1)X(4)	EQUIPMENT RACK (1)X(4)	EQUIPMENT RACK (1)X(4)	RACK UNITS
45			2 RU CABLE MANAGER	2 RU CABLE MANAGER	45
44					44
43			42 CPP 131-3A-42 (SEE NOTE 5)	42 CPP 131-4A-42 (SEE NOTE 5)	43
42					42
41			2 RU CABLE MANAGER	2 RU CABLE MANAGER	41
40					40
39			38 CPP 131-3A-38 (SEE NOTE 5)	38 CPP 131-4A-38 (SEE NOTE 5)	39
38					38
37					37
36					36
35					35
34					34
33					33
32					32
31					31
30					30
29					29
28					28
27					27
26					26
25					25
24					24
23					23
22					22
21					21
20					20
19					19
18					18
17					17
16					16
15					15
14					14
13					13
12					12
11					11
10					10
9					9
8					8
7					7
6					6
5					5
4					4
3					3
2					2
1					1
	1A	2A	3A	4A	

RACK ELEVATIONS					
RACK UNITS	EQUIPMENT RACK (1)X(4)	EQUIPMENT RACK (1)X(4)	EQUIPMENT RACK (1)X(4)	EQUIPMENT RACK (1)X(4)	RACK UNITS
45					45
44					44
43					43
42					42
41					41
40					40
39					39
38					38
37					37
36					36
35					35
34					34
33					33
32					32
31					31
30					30
29					29
28					28
27					27
26					26
25					25
24					24
23					23
22					22
21					21
20					20
19					19
18					18
17					17
16					16
15					15
14					14
13					13
12					12
11					11
10					10
9					9
8					8
7					7
6					6
5					5
4					4
3					3
2					2
1					1
	1B	2B	3B	4B	

- KEY NOTES:
- ① 4-POST FULL RACK ENCLOSURE
  - ② 4-POST OPEN RACK MOUNTED WITHIN RAISED FLOOR MOUNT OR DROP CEILING MOUNT MUTOA.
  - ③ FLOOR AND/OR CEILING RISER SLEEVES. SEE DETAIL 2 ON SHEET AT-507 FOR MORE INFORMATION.
  - ④ INSTALL TWO TYPE A (20 AMPS) PDU'S ON THE REAR RAILS OF THE EQUIPMENT RACK.
  - ⑤ INSTALL TWO TYPE C (20 AMPS) PDU WITHIN MUTOA.

- NOTES:
- NUMBERS DIRECTLY BELOW EACH RACK IN ELEVATIONS CORRESPOND TO THE RACK DESIGNATION IN THE PLAN VIEWS ON THIS SHEET.
  - SEE SHEET AT-502 FOR EQUIPMENT RACK GROUNDING DETAILS.
  - PATCH PANEL LABELING SHALL CONFORM TO ANSI/TIA-606-B STANDARDS.
  - EQUIPMENT TO BE INSTALLED IN THE EQUIPMENT RACKS SHALL HAVE AMPLE SURGE PROTECTION DEVICES (SPD'S) INSTALLED TO RESIST THE LIKELIHOOD OF DAMAGE FROM GROUND POTENTIAL, LIGHTNING, OR ANY OTHER ENVIRONMENTAL ELECTRICAL THREAT. SPD'S SHALL BE INSTALLED AS NEAR AS POSSIBLE TO THE EQUIPMENT RACK GROUND BUSBAR. SPD'S SHALL BE INSTALLED AS NEAR AS POSSIBLE TO THE EQUIPMENT RACK GROUND BUSBAR.
  - 48-PORT RJ-45 CAT6 PATCH PANEL FOR FHP DATA CONNECTIONS.
  - 48-PORT FPP FOR CONNECTIONS TO FPP'S IN RACK 3A IN ROOM #142.
  - 48-PORT RJ-45 CAT6 CPP FOR ITS DATA PORTS.
  - MOUNT FOC PATCH PANEL SPLICE TRAY ENCLOSURES BEHIND THE 2 RU CABLE MANAGERS AS NEEDED TO ACCOMMODATE QUANTITY OF SPLICE
  - TRAYS NEEDED TO HOUSE THE NUMBER OF SPLICES EQUAL TO THE NUMBER OF PORTS IN THE PATCH PANEL.
  - FULLY TERMINATE ALL CABLES INTO THE PATCH PANELS.

REVISIONS						AECOM TECHNICAL SERVICES, INC			STATE OF FLORIDA DEPARTMENT OF TRANSPORTATION			EQUIPMENT RACK DETAILS		REF. DWG. NO.	
DATE	BY	DESCRIPTION	DATE	BY	DESCRIPTION	315 EAST ROBINSON STREET, SUITE 245 ORLANDO, FL 32801-1949 TEL: (407) 422-0353			ROAD NO.	COUNTY	FINANCIAL PROJECT ID	REGIONAL TRANSPORTATION MANAGEMENT CENTER		AT-503	
						CERTIFICATE OF AUTHORIZATION NO. 8115 ALEX MOUSADI, P.E. NO. 50764			N / A	SEMINOLE	437100-1-52-01			SHEET NO.	
															238 OF 249